

Figure S1. Overview of parameterized SimaPro city model driver tree for global warming with cut-off $< 0.18\%$. Section A, B, and C displayed in detail in Figure S2, S3, and S4, respectively. Food and goods consumption not included.

Supplementary Material S2

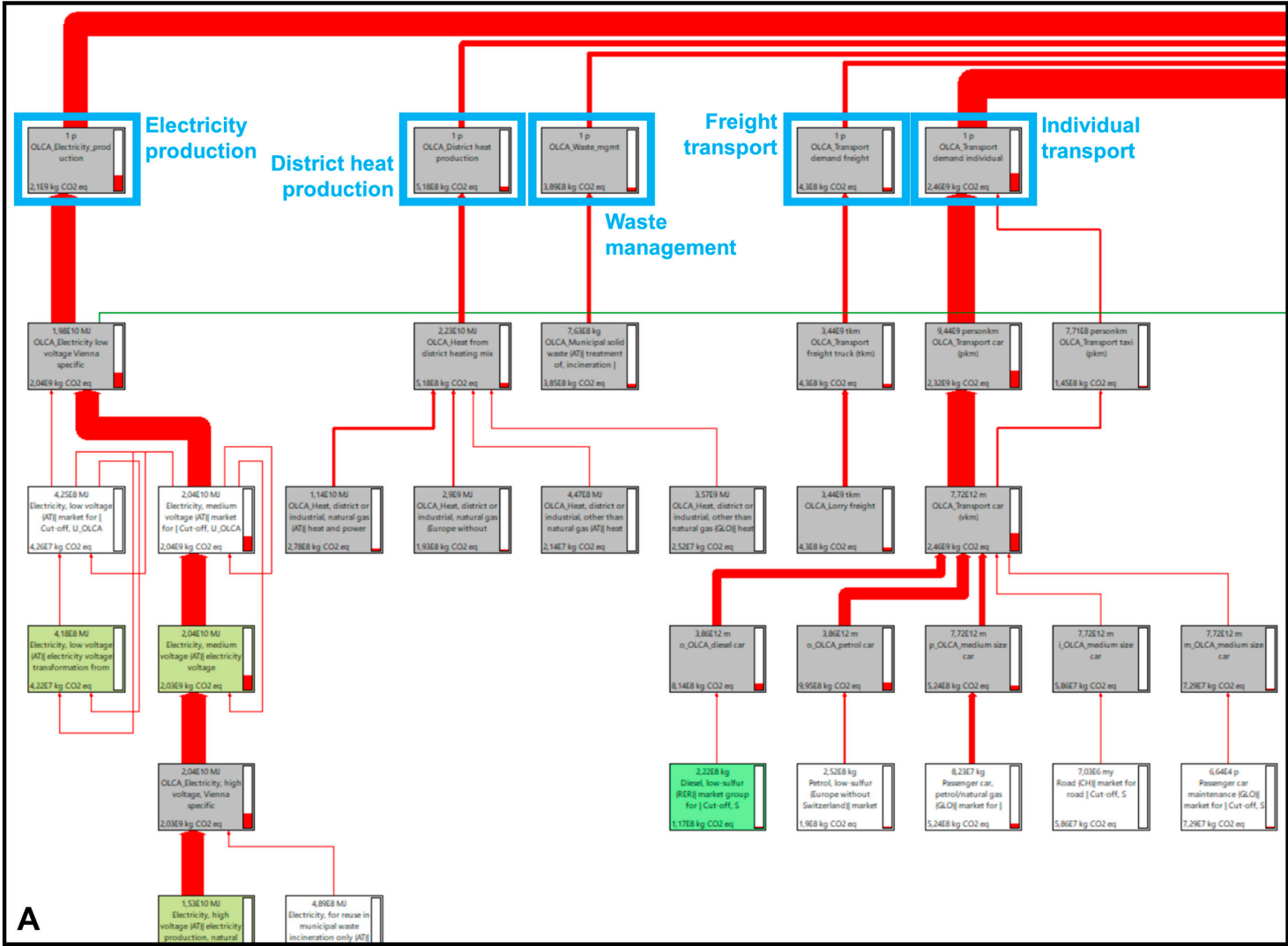


Figure S2. Section view "A" of Figure S1, displaying details for electricity production, district heat production, waste management, freight transport, and individual transport.

Supplementary Material S3

1

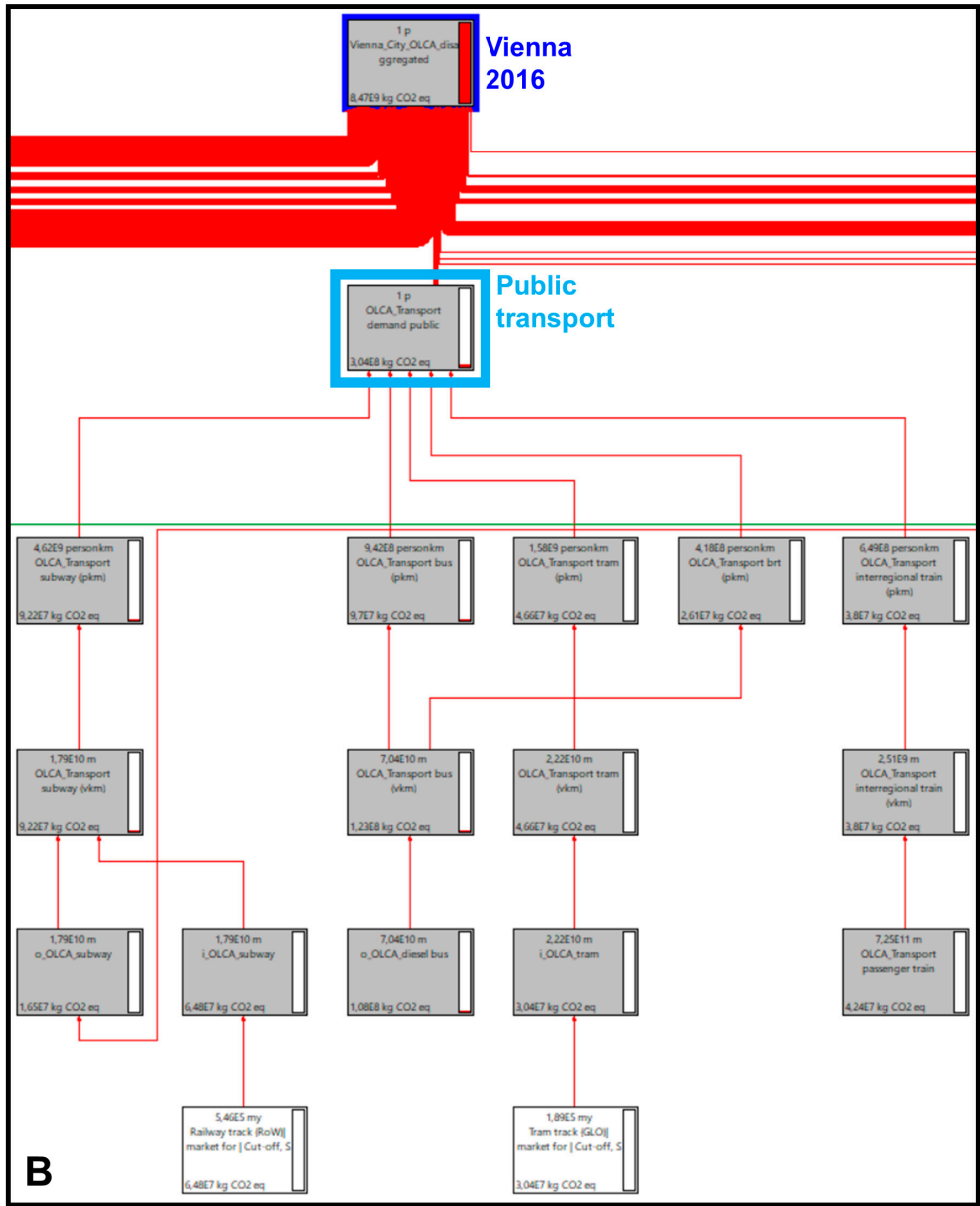


Figure S3. Section view “B” of Figure S1, displaying details for public transport.

2

3

Supplementary Material S4

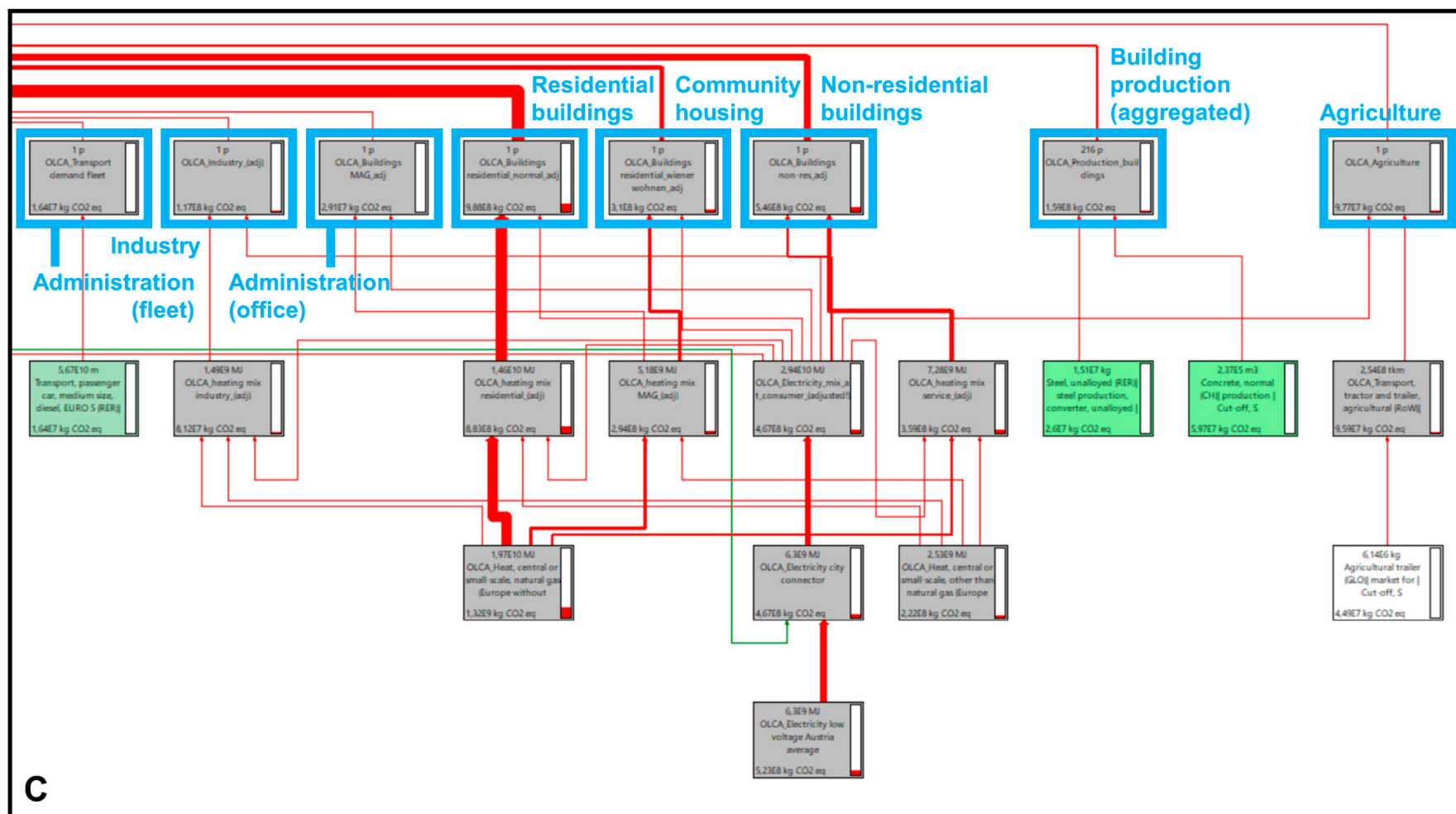


Figure S5. Section view “C” of Figure S1, displaying details for administration, industry, residential buildings, community housing, non-residential buildings, building production (aggregated), and agriculture.

Supplementary Material S5

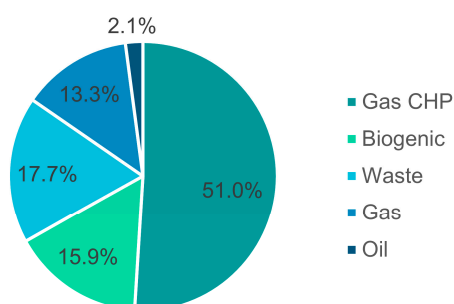


Figure S5. District heating mix in Vienna for 2016 (CHP stands for “combined heat and power”).

Supplementary Material S6

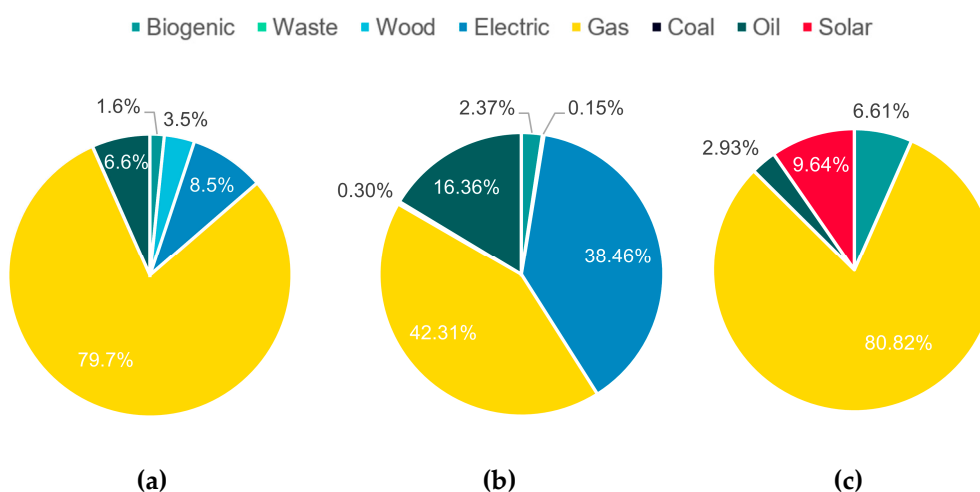


Figure S6. Heating mixes in buildings without district heating for (a) Residential buildings, (b) Non-residential buildings, and (c) Administrative and community housing buildings.

Supplementary Material S7

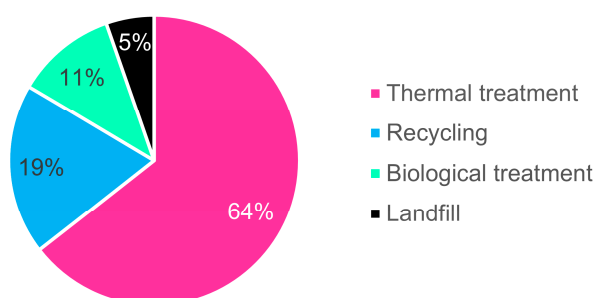


Figure S7. Waste treatment pathways.