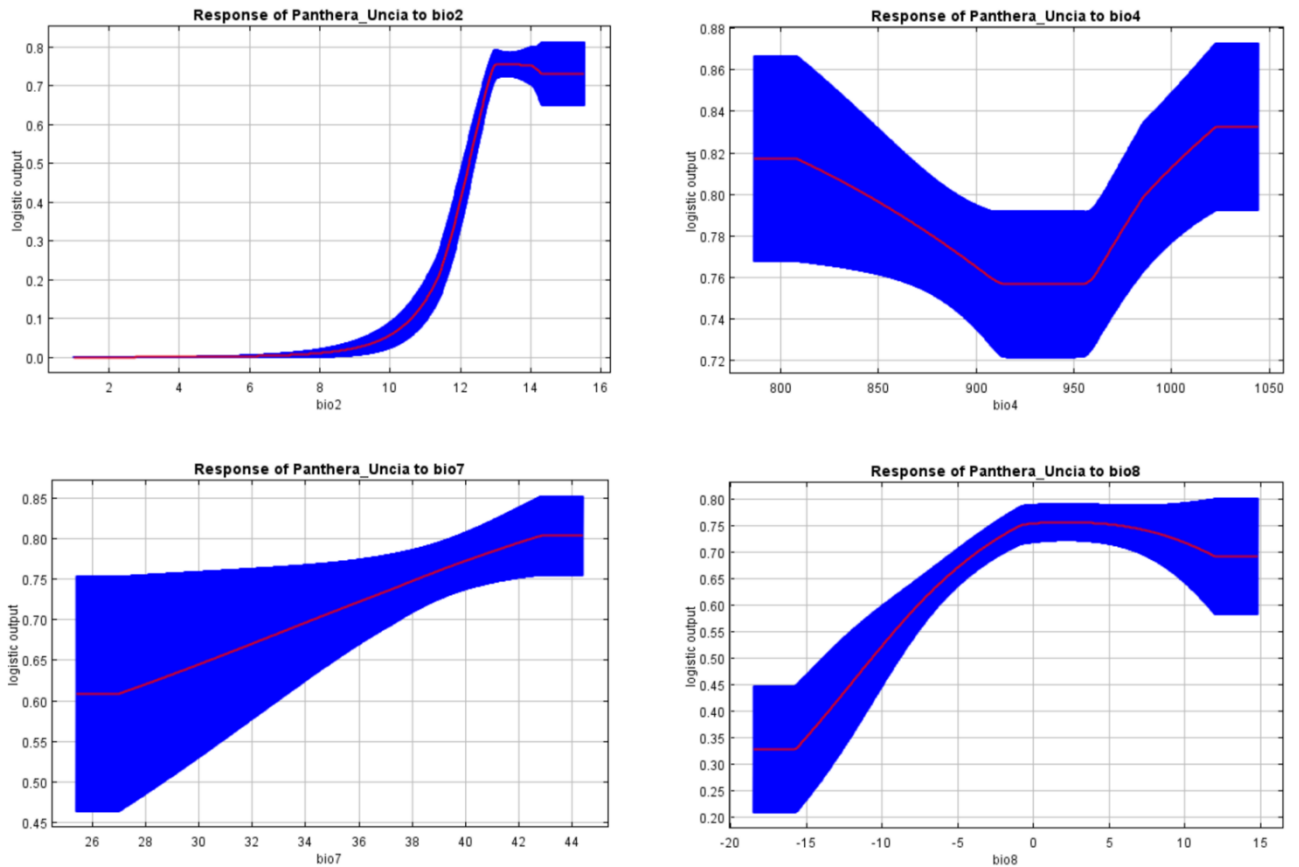
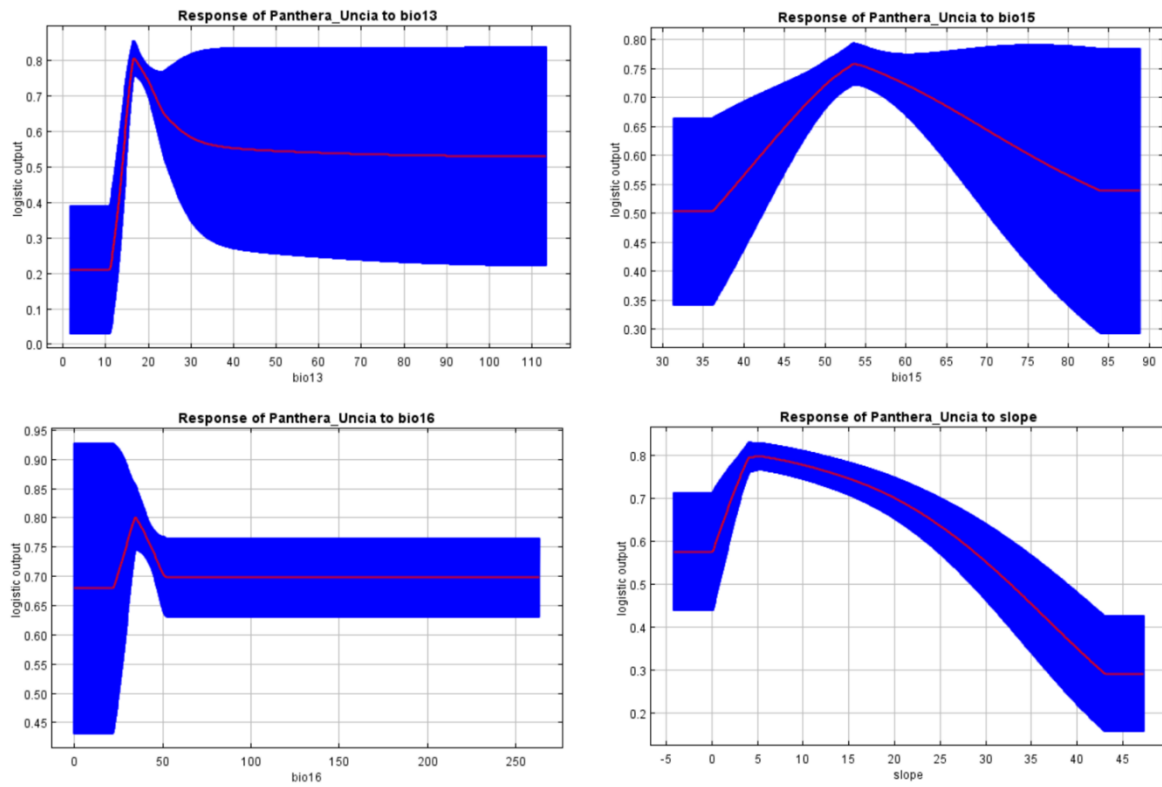


### Supplementary Figures: Response Curves

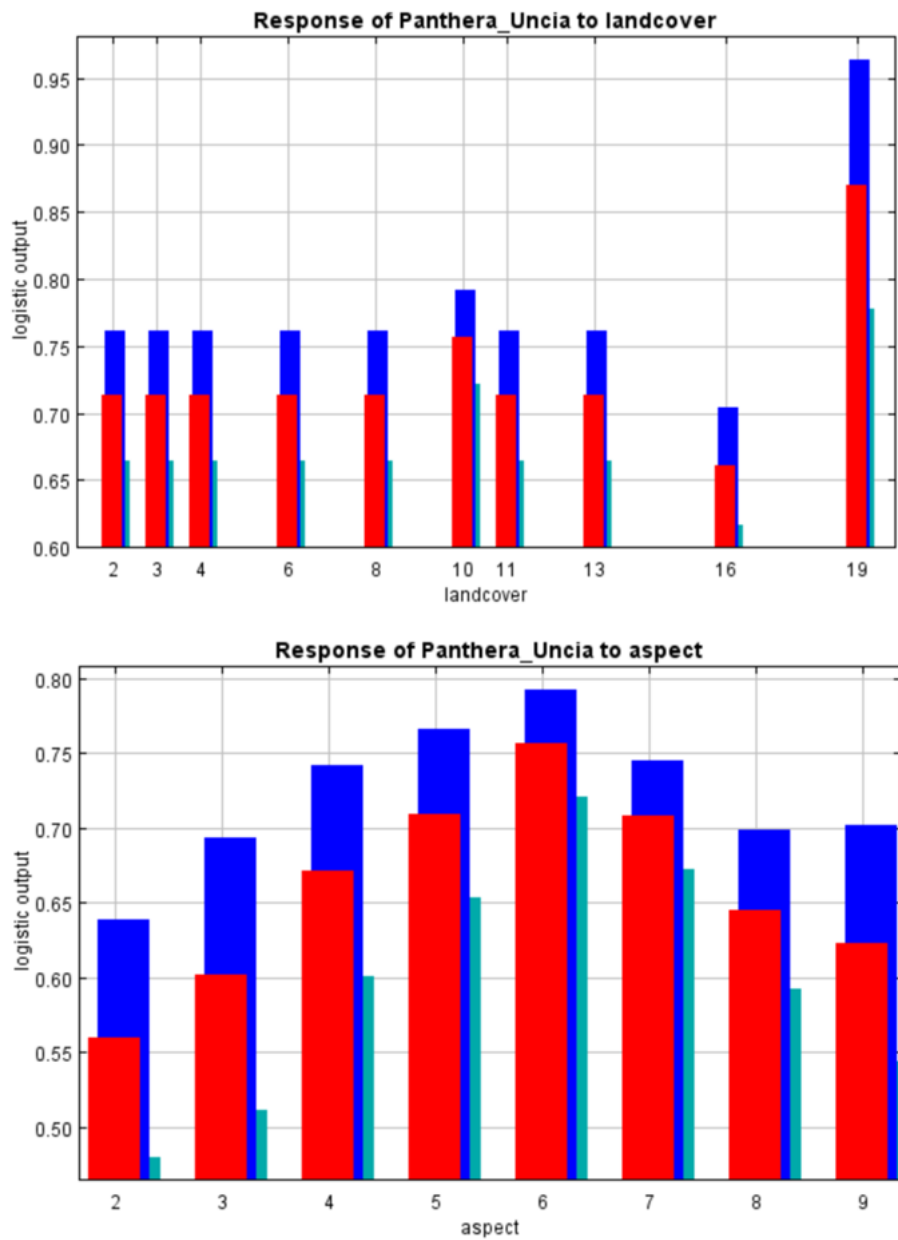
The response curves showing how each environmental variable affects the MaxEnt prediction. The curves shows how the predicted probability of presence changes as each environmental variable is varied, keeping all other environmental variables at their average sample value.



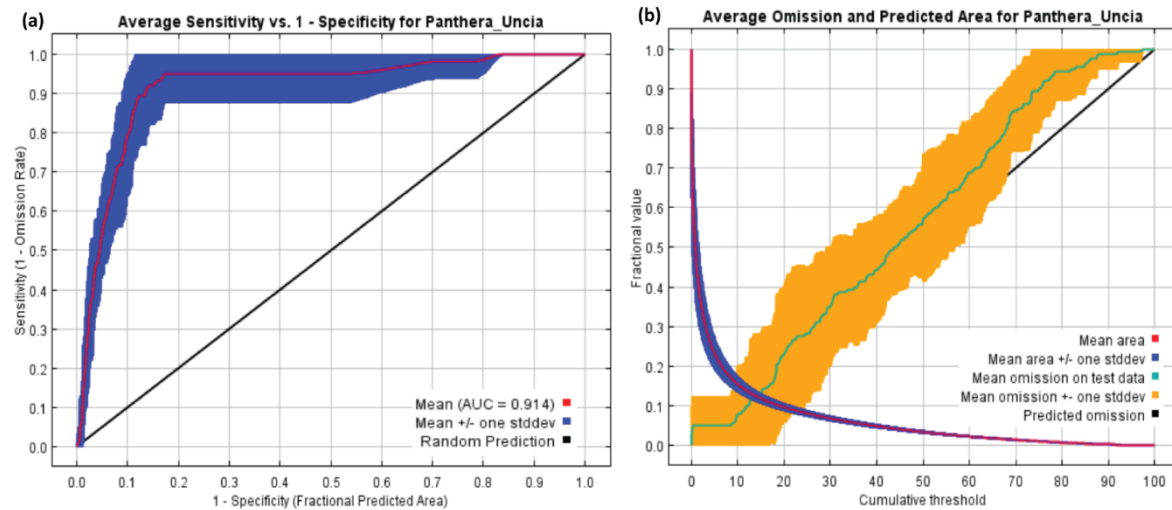
**Figure S1. Response of Snow leopard (*Panthera uncia*) distribution to bio\_2, bio\_4, bio\_7 and bio\_8.**



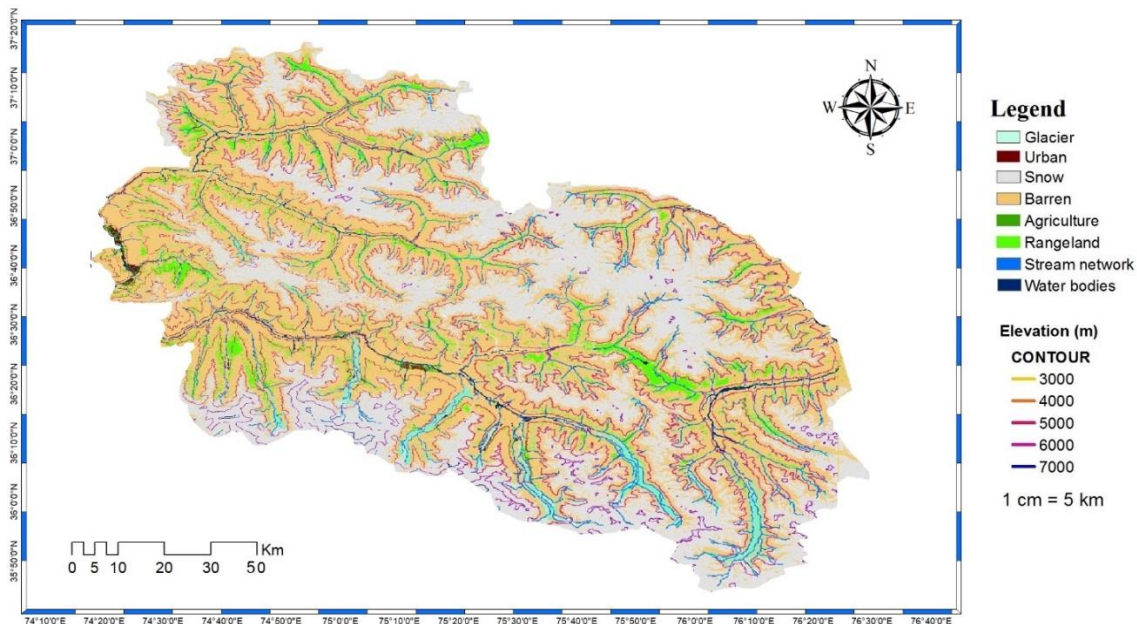
**Figure S2. Response of Snow leopard (*Panthera uncia*) distribution to bio\_13, bio\_15, bio\_16 and slope.**



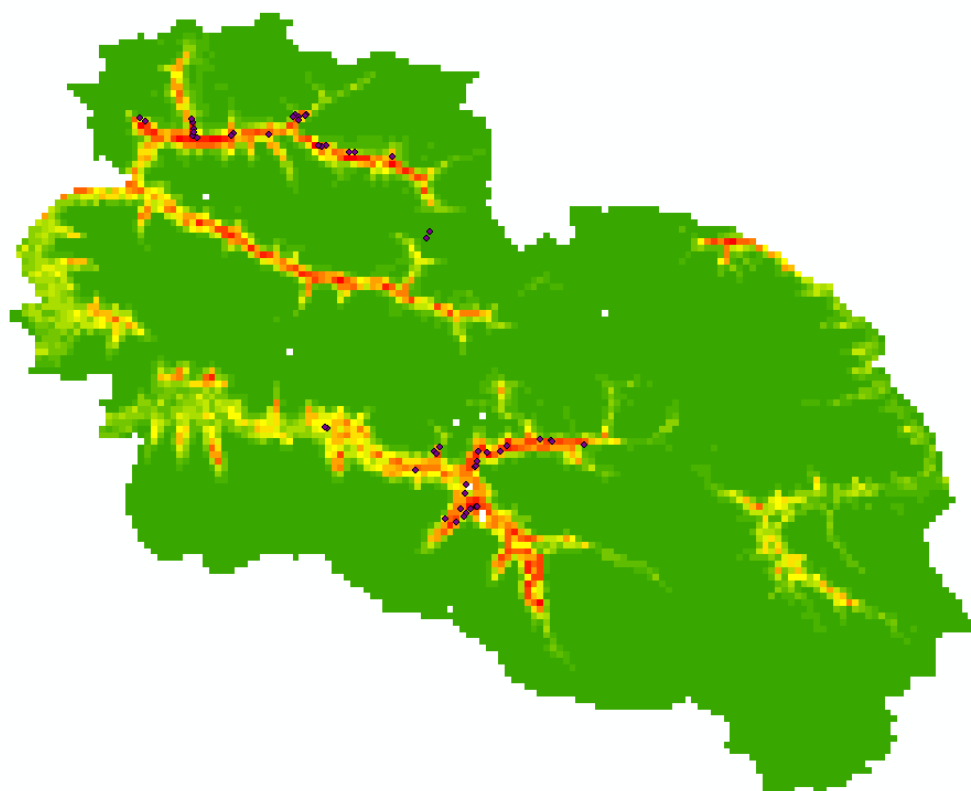
**Figure S3. Response of Snow leopard (*Panthera uncia*) distribution to Land cover and aspect.**



**Figure S4.** The statistical graphs of the MaxEnt model output results: (a) the ROC (receiver operating characteristics) curve and the average test AUC (Area under Curve) for accuracy of the analysis of habitat prediction; (b) analysis of the omission test rate and predicted area.



**Figure S5.** Current land use and land cover of the study area



**Figure S6.** Location of the sampling points obtained through the sign survey.