

## **Supporting Information for**

Absolute contribution of the non-uniform spatial distribution of atmospheric CO<sub>2</sub> to net primary production through CO<sub>2</sub>-radiative forcing

**Jing Peng<sup>1\*</sup>, Li Dan<sup>1</sup>, Jinming Feng<sup>1</sup>, Kairan Ying<sup>1</sup>, Xiba Tang<sup>2</sup>, Fuqiang Yang<sup>1</sup>**

<sup>1</sup>CAS Key Laboratory of Regional Climate-Environment for Temperate East Asia, Institute of Atmospheric Physics, Chinese Academy of Sciences, Beijing, China,

<sup>2</sup> Laboratory of Cloud-Precipitation Physics and Severe Storms (LACS), Institute of Atmospheric Physics, Beijing, China

### **Contents of this file**

Figures S1.

### **Introduction**

The supporting information consists of supplemental figures.

Figure S1. (a) NPP and (b) soil moisture (MRSO) for the globe (GL), evergreen needle leaf forest (ENF); evergreen broadleaf forest (EBF); deciduous broadleaf forest (DBF); crop (C) and tundra (Tun) during the period 1956–2005 caused by the impact of spatial varying of CO<sub>2</sub> concentrations. Horizontal lines in the bars show the maximum and minimum NPP or soil moisture with considering feedbacks of ocean and sea ice (orange) and without considering feedbacks of ocean and sea ice (light blue) from 1956 to 2005.

---

\*Author for correspondence: Jing Peng; E-mail: pengjing@tea.ac.cn

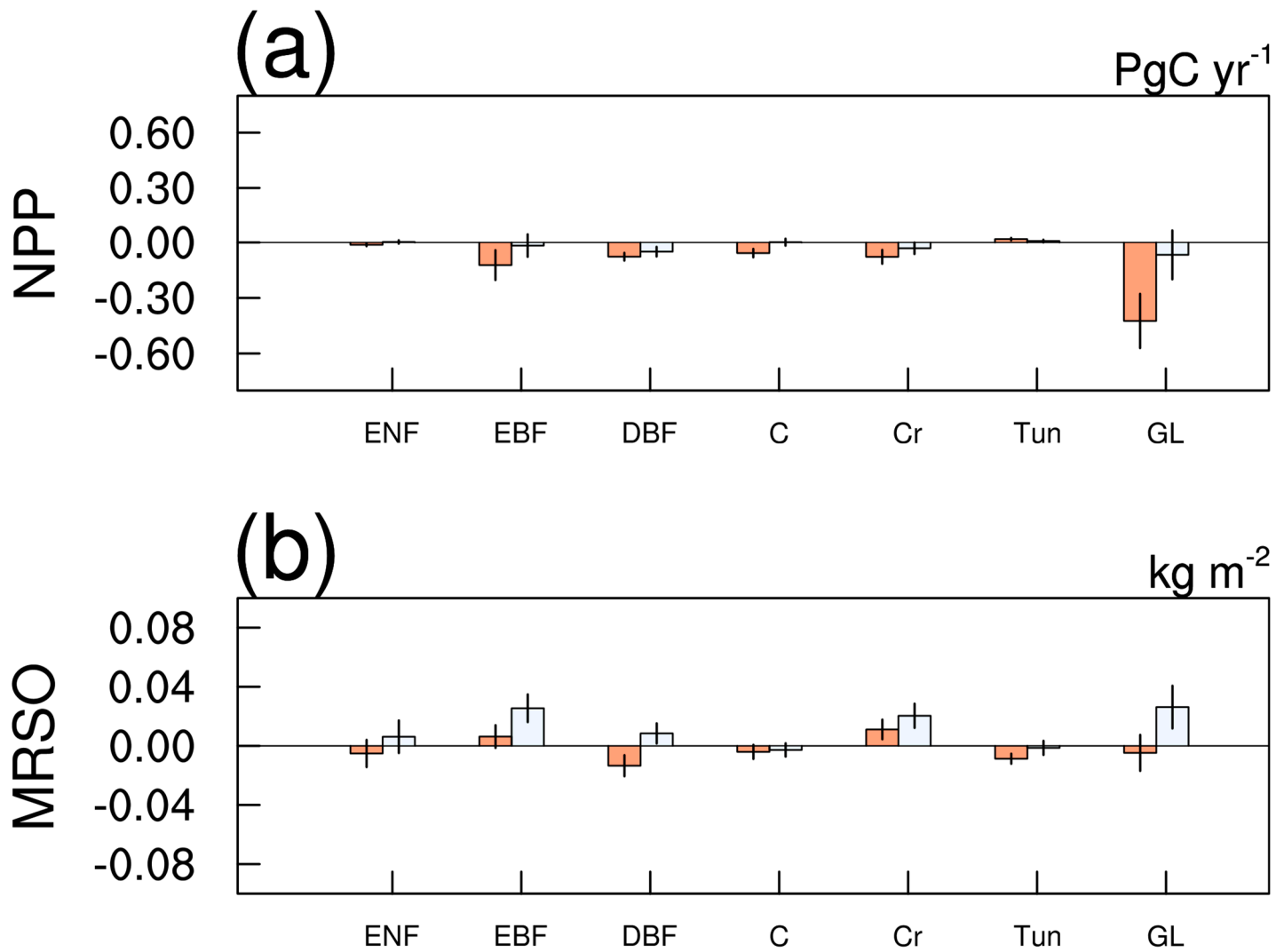


Figure S1. (a) NPP and (b) soil moisture (MRSO) for the globe (GL), evergreen needle leaf forest (ENF); evergreen broadleaf forest (EBF); deciduous broadleaf forest (DBF); crop (C) and tundra (Tun) during the period 1956–2005 caused by the impact of spatial varying of CO<sub>2</sub> concentrations. Horizontal lines in the bars show the maximum and minimum NPP or soil moisture with considering feedbacks of ocean and sea ice (orange) and without considering feedbacks of ocean and sea ice (light blue) from 1956 to 2005.