

Supplementary Material 2: Patterns of relative suitability for wind energy potential across different factors

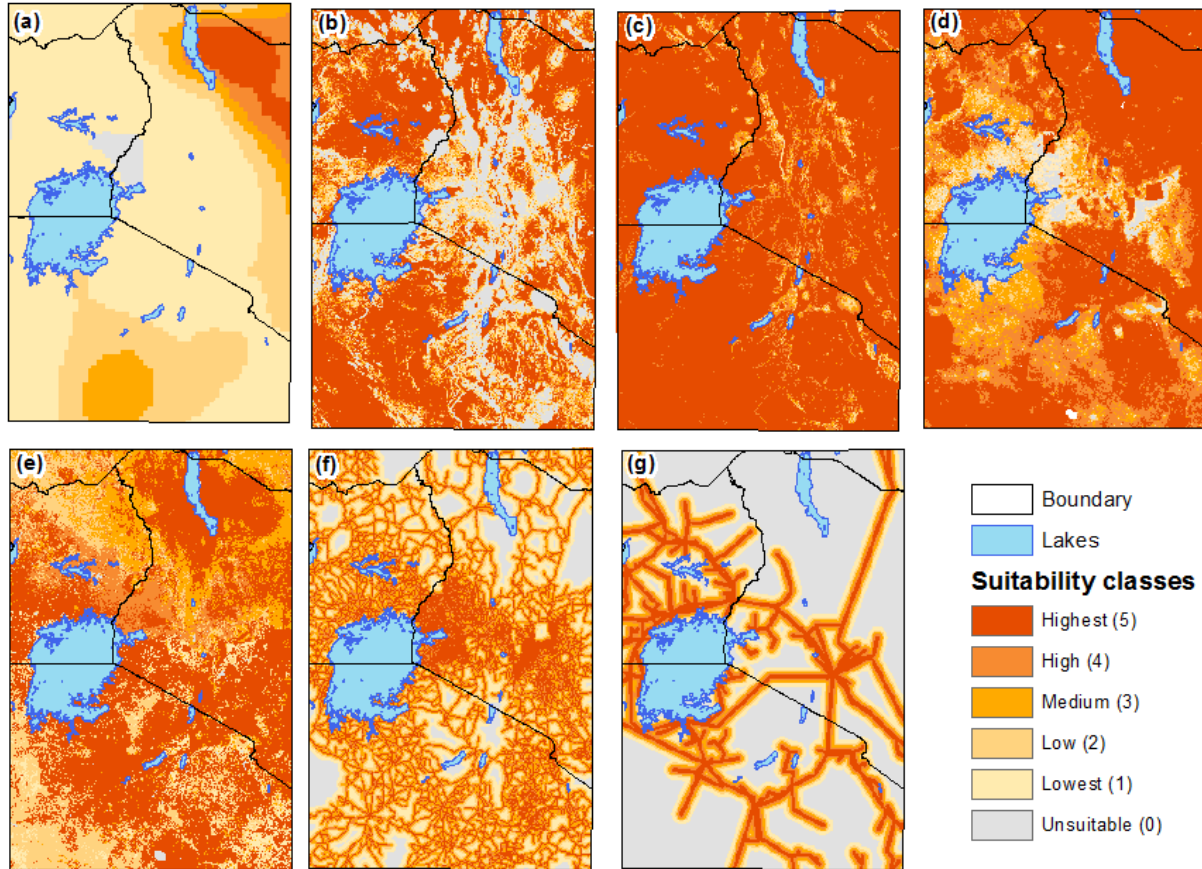


Figure S1: Patterns of relative suitability of wind energy potential across different factors. (a) Long-term average wind speed data. (b) Topographic Roughness Index. (c) Slope (d) Population density (e) Land cover characteristics. (f) Distance from roads. (g) Distance to major electricity transmission lines.