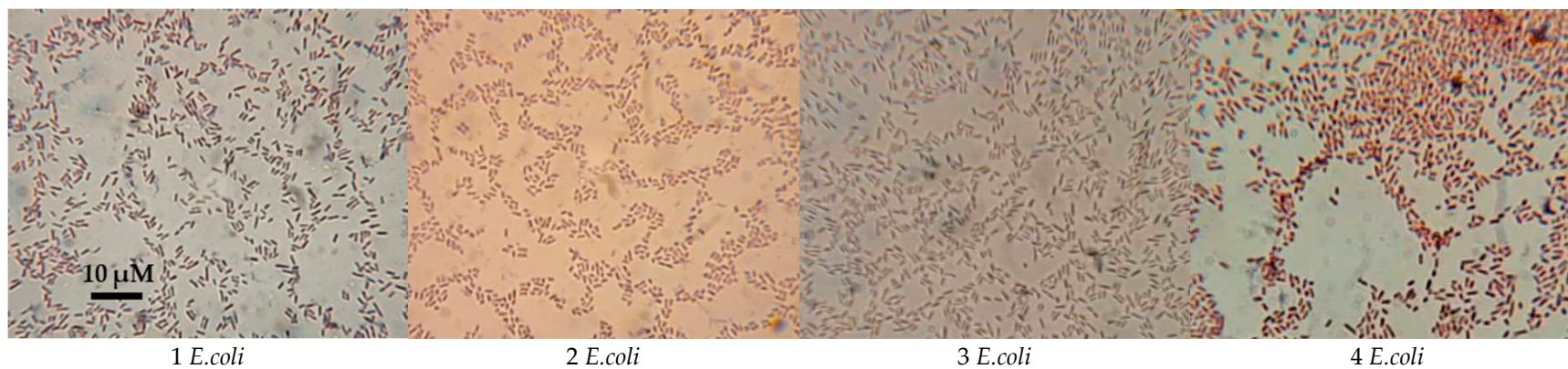
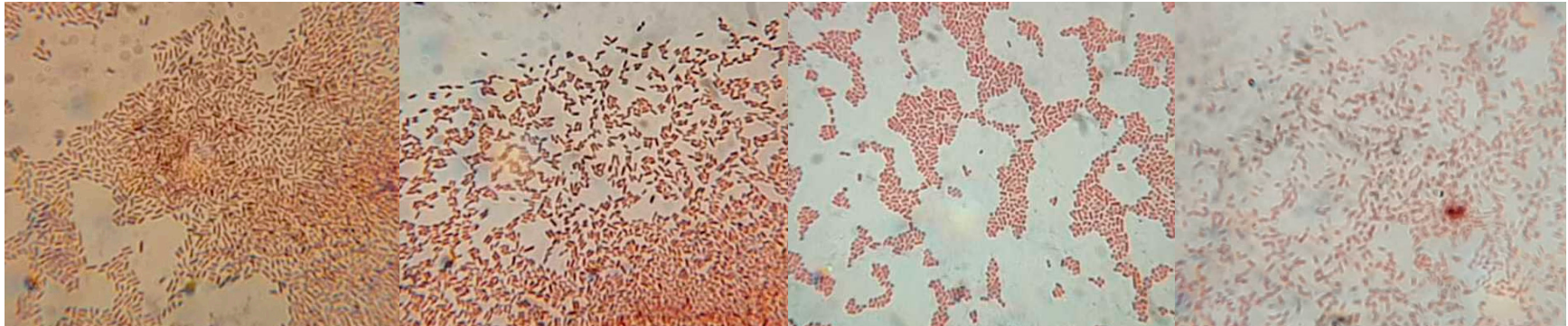


Figure S1. Example of the macro morphology of colonies. **(a)** A control *E. coli* American Type Culture Collection (ATCC) 35218; **(b)** *E. coli*, isolate 4; **(c)** *E. coli*, isolate 8.





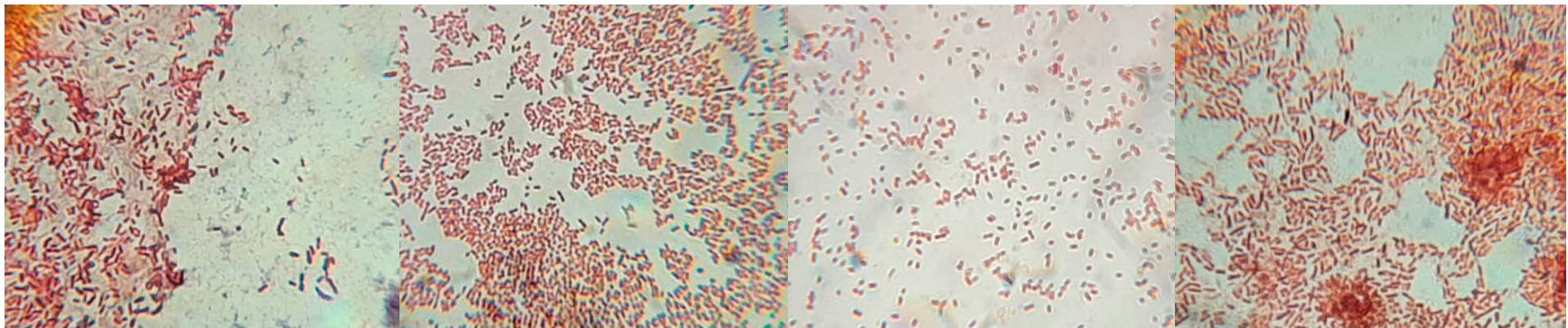


8 *E.coli*

11 *E.coli*

18 *E.coli*

20 *E.coli*

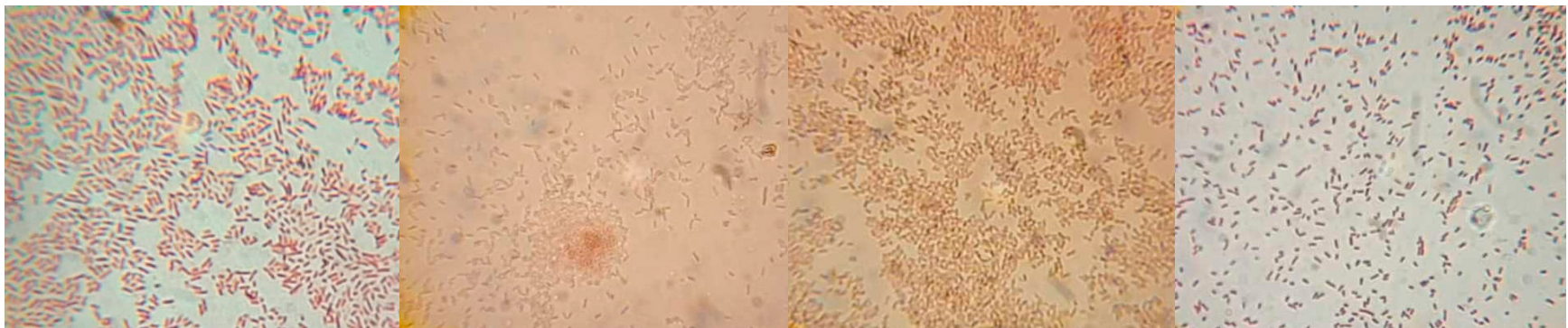


21 *E.coli*

22 *E.coli*

23 *E. coli*

24 *E.coli*



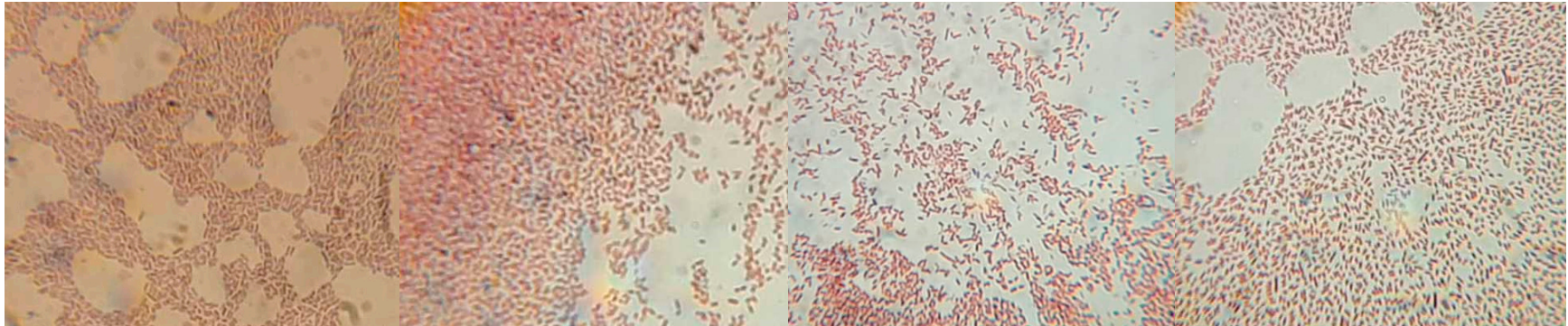
25 *E.coli*

5 *H. alvei*

6 *H. alvei*

7 *H. alvei*



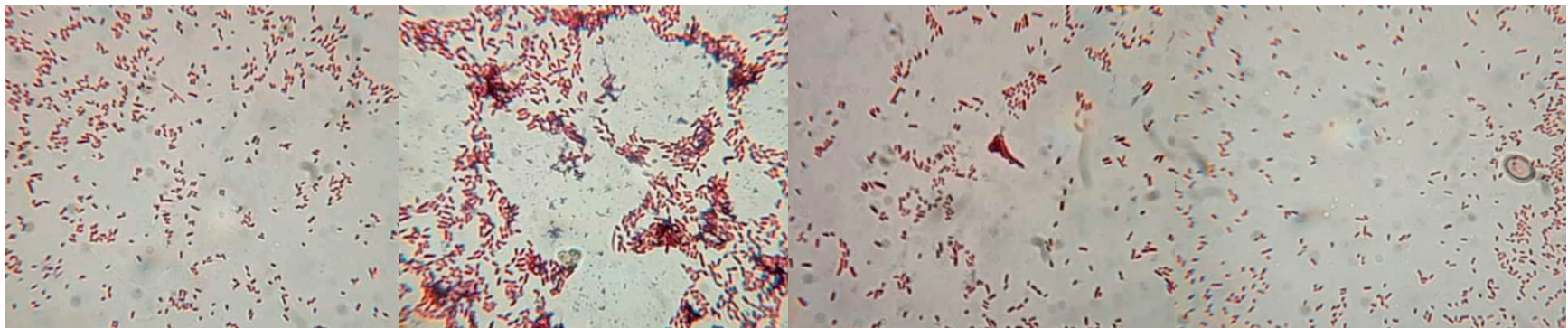


9 *H. alvei*

10 *H. alvei*

12 *H. alvei*

13 *Y. enterocolitica*

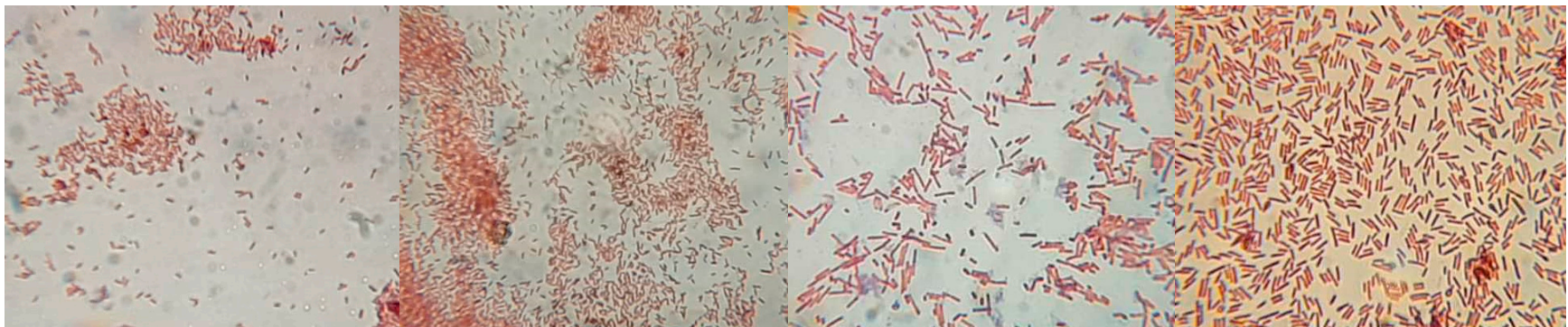


14 *Y. enterocolitica*

15 *Y. enterocolitica*

16 *Y. enterocolitica*

17 *Y. enterocolitica*



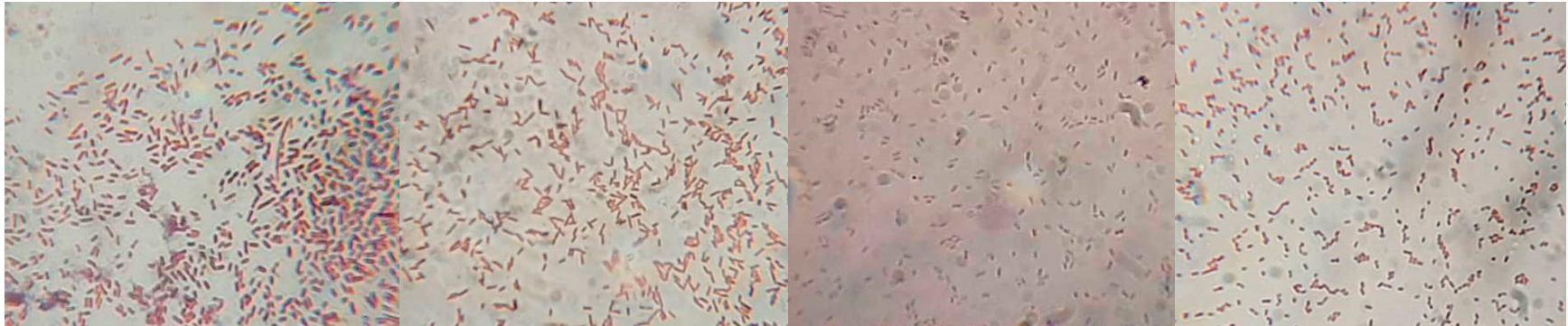
19 *Y. kristensenii*

53 *Y. kristensenii*

26 *L. sphaericus*

39 *L. sphaericus*



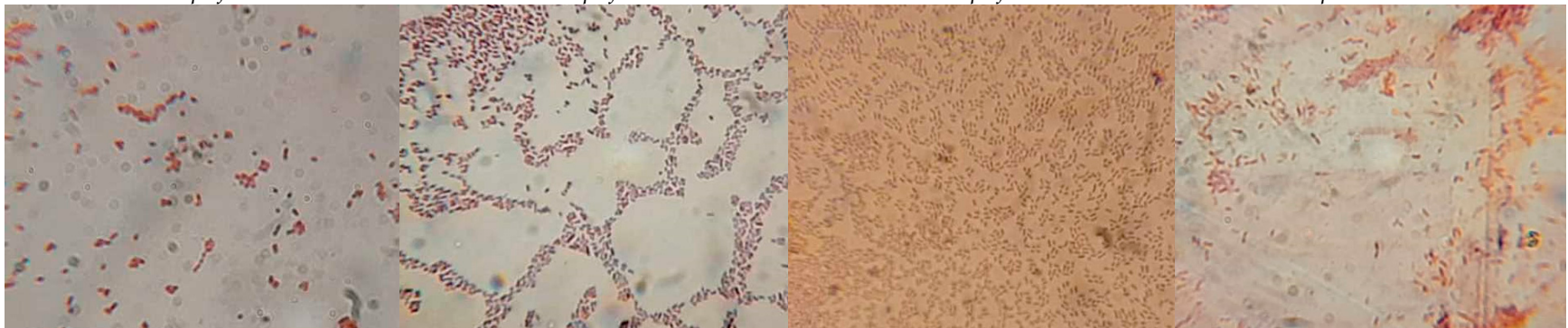


27 *S. liquefaciens*

28 *S. liquefaciens*

31 *S. liquefaciens*

30 *S. proteamaculans*

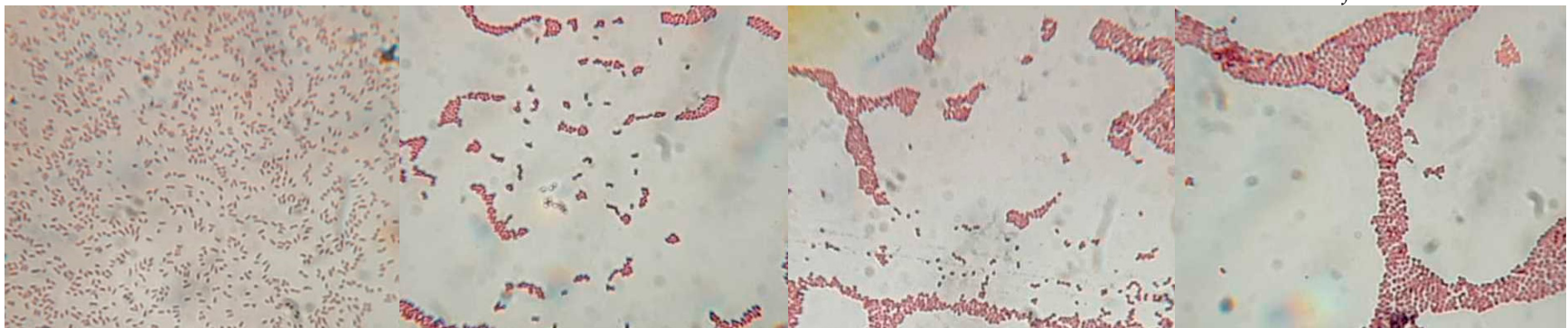


47 *S. marcescens*

48 *S. marcescens*

50 *S. marcescens*

29 *P. fluorescens*



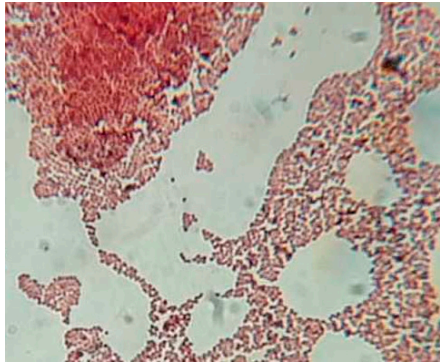
32 *P. fluorescens*

33 *E. hirae*

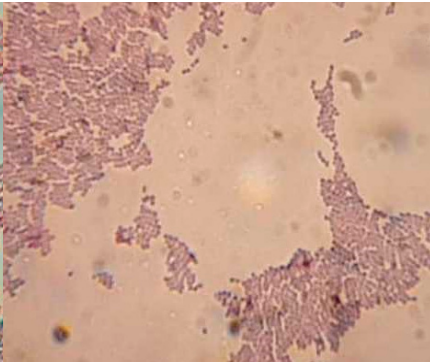
34 *E. faecalis*

35 *E. faecalis*

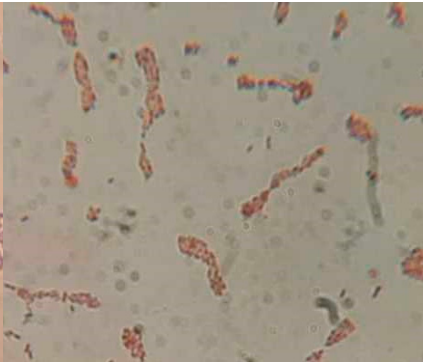




36 *E. faecalis*



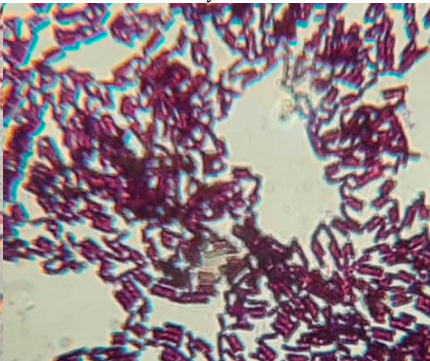
38 *E. faecalis*



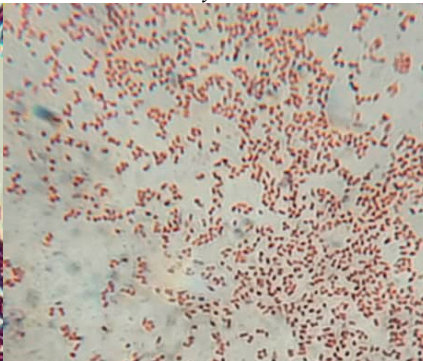
41 *E. faecium*



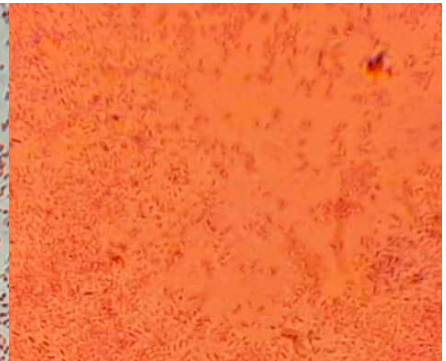
37 *B. thuringiensis*



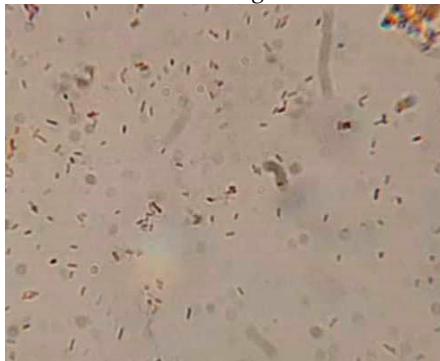
40 *B. thuringiensis*



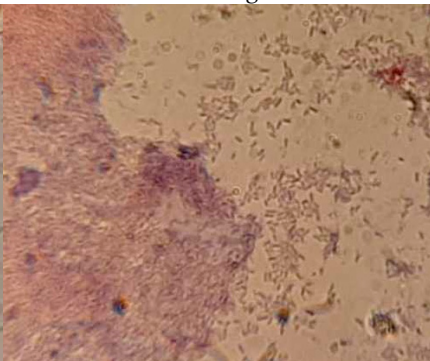
42 *P. agglomerans*



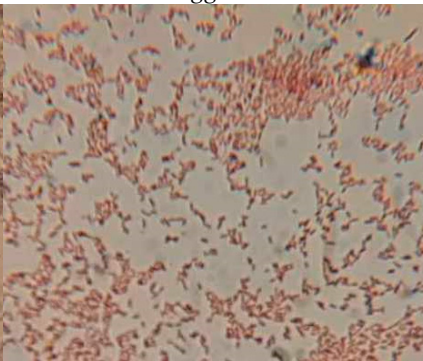
43 *P. agglomerans*



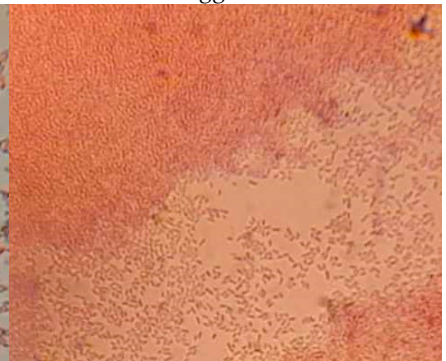
44 *P. agglomerans*



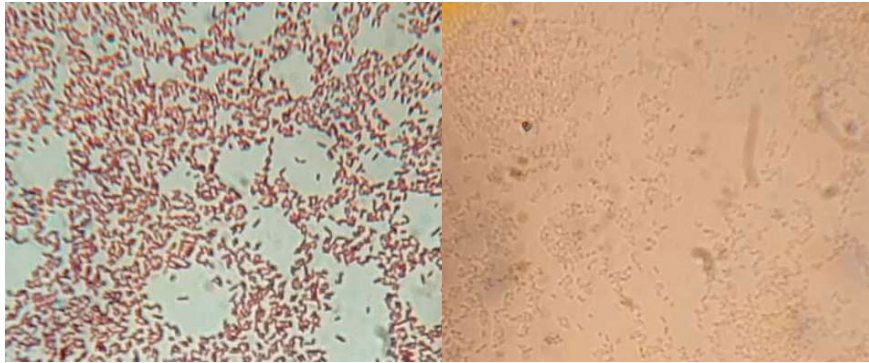
45 *P. agglomerans*



49 *K. pneumoniae* ssp. *ozaenae*



52 *K. pneumoniae* ssp. *ozaenae*



46 *Pseudomonas aeruginosa*

51 *E. coli*

Figure S2. Microscopic preparations of the isolates arranged by bacterial species.