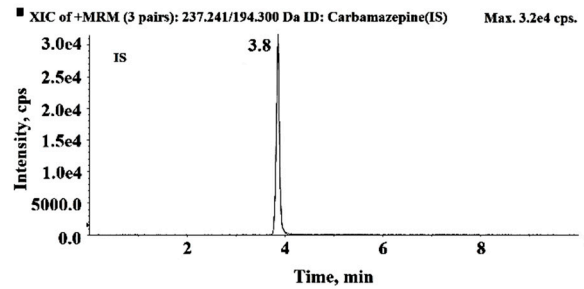
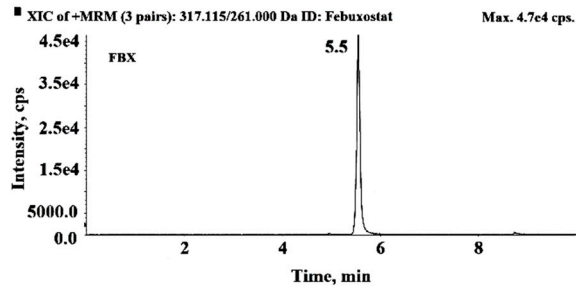
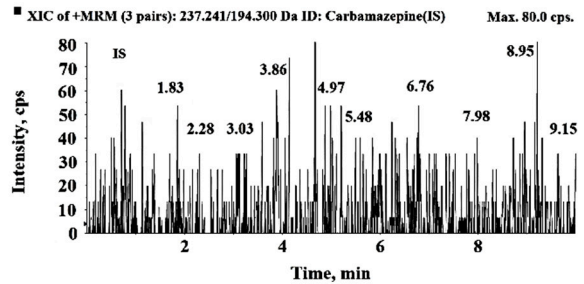
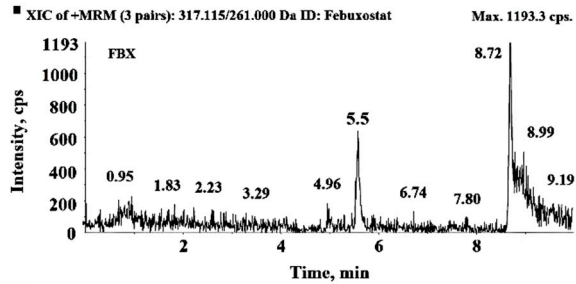


Supplementary material

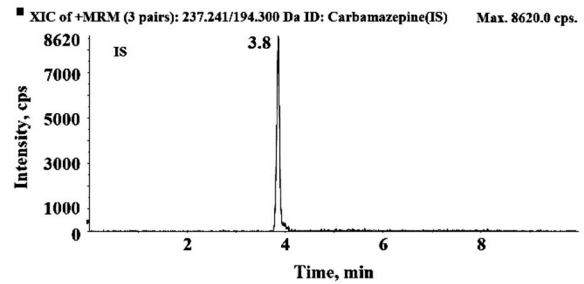
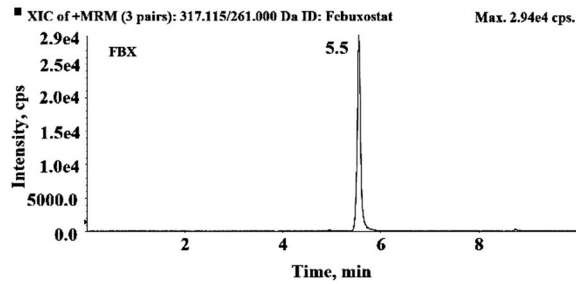
(a)



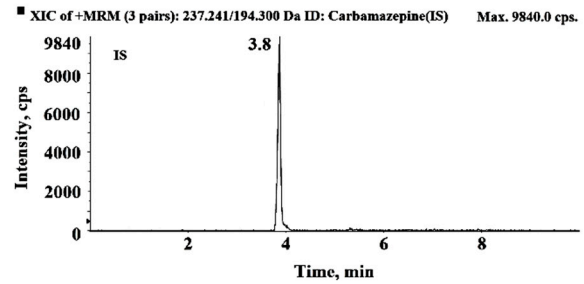
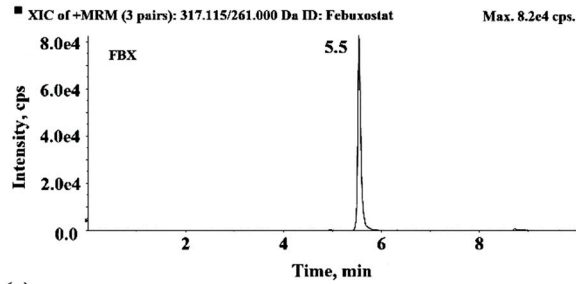
(b)



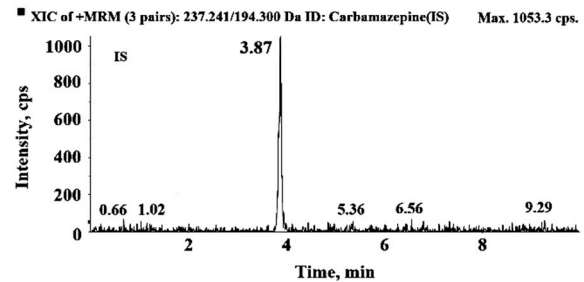
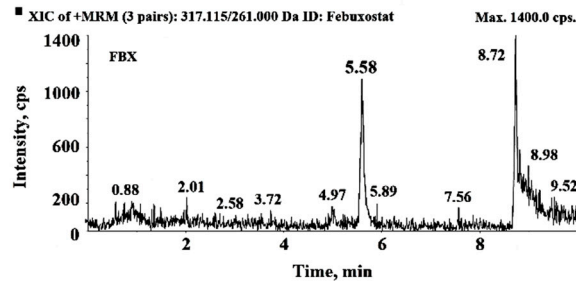
(c)



(d)



(e)



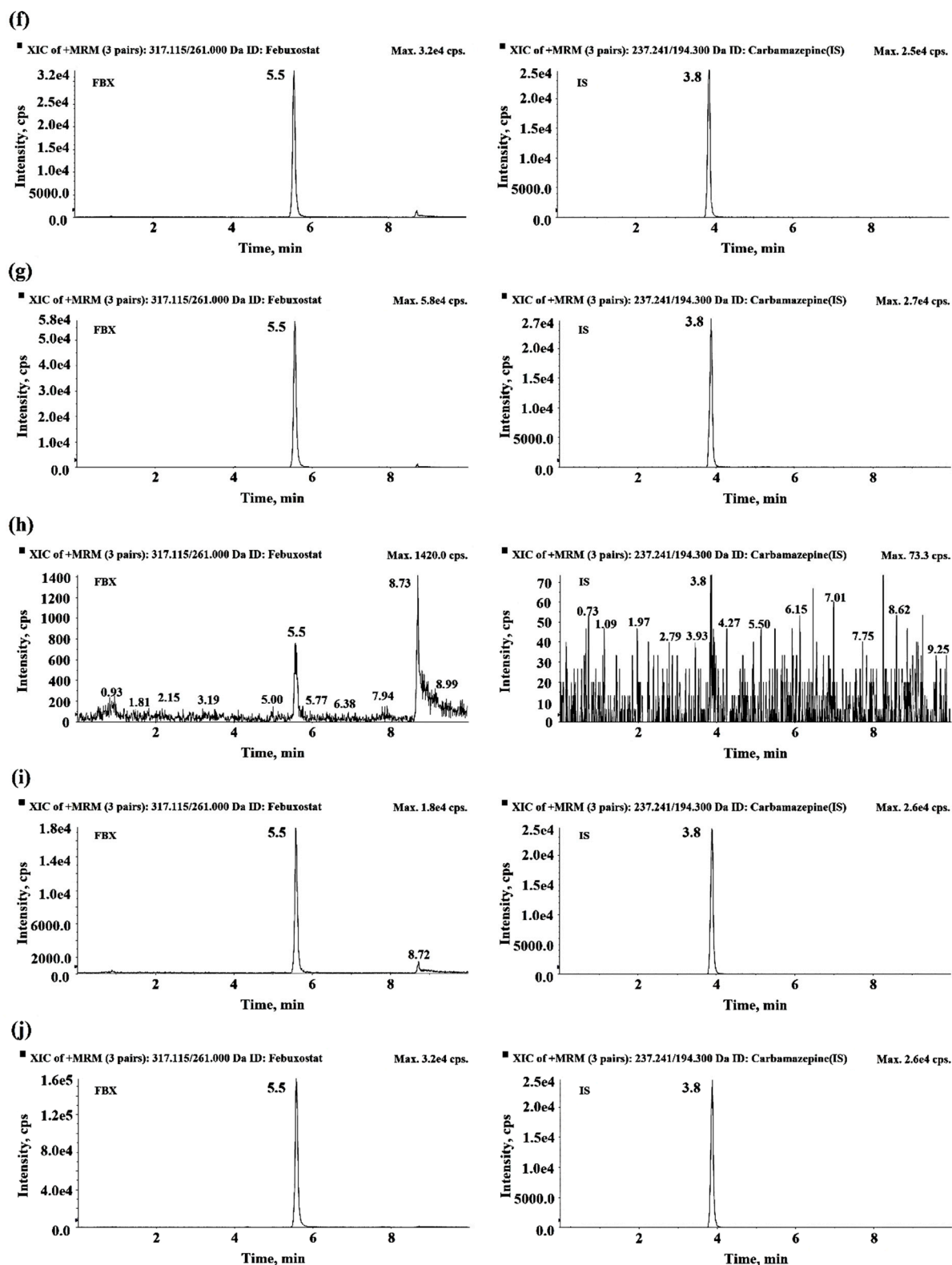


Figure S1. Representative chromatograms of FBX and IS in mouse plasma, urine, and GI samples. **(a)** Stock solution of 0.005 $\mu\text{g/mL}$ FBX and 0.005 $\mu\text{g/mL}$ IS; **(b)** drug-free mouse plasma; **(c)** plasma standard spiked with 7 $\mu\text{g/mL}$ FBX; **(d)** plasma sample at 30 min after oral administration of 50 mg/kg FBX; **(e)** drug-free urine; **(f)** urine standard spiked with 7 $\mu\text{g/mL}$ FBX; **(g)** urine sample collected at 24 h after oral administration of 50 mg/kg FBX; **(h)** drug-free GI; **(i)** GI standard spiked with 7 $\mu\text{g/mL}$ FBX; **(j)** GI sample collected at 24 h after oral administration of 50 mg/kg FBX.

Table S1. Concentrations ($\mu\text{g/mL}$ for plasma and $\mu\text{g/g}$ tissue in tissues) of FBX in plasma and tissues and their T/P ratios after oral (50 mg/kg as FBX) administration of FBX or FBX-PG to mice, respectively. Values in parentheses are mean values of the T/P ratios.

Tissue	FBX (<i>n</i> = 6)				
	0.5 h	2 h	4 h	8 h	12 h
Plasma	22.4 \pm 6.49	22.6 \pm 7.76	11.8 \pm 8.00	4.91 \pm 1.28	11.4 \pm 6.95
Liver	32.4 \pm 4.76 (1.53 \pm 0.395)	37.7 \pm 8.24 (1.75 \pm 0.431)	23.7 \pm 10.1 (2.43 \pm 0.758)	21.3 \pm 11.9 (4.13 \pm 1.32)	26.3 \pm 15.1 (2.40 \pm 0.286)
Kidney	11.1 \pm 3.85 (0.512 \pm 0.168)	11.3 \pm 7.18 (0.523 \pm 0.363)	12.1 \pm 9.80 (0.952 \pm 0.450)	8.64 \pm 3.34 (1.89 \pm 1.00)	8.00 \pm 5.43 (0.662 \pm 0.160)
Stomach	112 \pm 52.8 (5.55 \pm 2.97)	189 \pm 59.8 (8.93 \pm 3.40)	125 \pm 56.8 (13.8 \pm 6.74)	75.4 \pm 29.7 (16.4 \pm 7.91)	87.9 \pm 55.0 (13.6 \pm 13.8)
Small intestine	23.2 \pm 16.8 (1.05 \pm 0.616)	26.6 \pm 22.8 (1.32 \pm 1.09)	33.0 \pm 29.8 (2.92 \pm 1.55)	19.6 \pm 7.49 (4.45 \pm 2.68)	18.0 \pm 7.31 (2.19 \pm 2.04)
Large intestine	17.8 \pm 20.8 (1.00 \pm 1.51)	10.5 \pm 8.05 (0.562 \pm 0.528)	20.4 \pm 19.5 (1.52 \pm 0.900)	10.0 \pm 5.72 (2.10 \pm 1.23)	7.09 \pm 3.72 (0.769 \pm 0.419)
Lung	35.0 \pm 52.0 (1.80 \pm 2.69)	34.2 \pm 16.9 (1.70 \pm 0.960)	27.5 \pm 22.2 (2.04 \pm 1.03)	136 \pm 48.4 (27.6 \pm 5.82)	58.1 \pm 34.3 (4.23 \pm 1.99)
Heart	3.42 \pm 2.51 (0.157 \pm 0.112)	2.97 \pm 1.48 (0.116 \pm 0.0422)	3.12 \pm 1.48 (0.328 \pm 0.133)	3.03 \pm 3.28 (0.563 \pm 0.461)	2.04 \pm 0.558 (0.247 \pm 0.177)
Fat	4.19 \pm 1.81 (0.190 \pm 0.0649)	4.57 \pm 2.41 (0.228 \pm 0.0934)	4.54 \pm 2.34 (0.586 \pm 0.485)	8.30 \pm 8.06 (1.82 \pm 1.99)	2.17 \pm 1.51 (0.315 \pm 0.410)

Tissue	FBX-PG (<i>n</i> = 3)				
	0.5 h	2 h	4 h	8 h	12 h
Plasma	19.5 ± 4.96	36.1 ± 18.0	13.5 ± 4.33	6.55 ± 1.88	29.6 ± 13.5*
Liver	64.2 ± 26.7*	102 ± 22.8*	146 ± 83.4*	52.4 ± 5.07*	30.1 ± 6.06
	(3.33 ± 1.10)*	(3.31 ± 1.42)	(10.1 ± 6.52)*	(8.38 ± 2.00)*	(1.17 ± 0.507)*
Kidney	22.0 ± 8.32*	14.7 ± 8.09	10.3 ± 1.48	13.9 ± 6.55	11.8 ± 4.09
	(1.11 ± 0.220)*	(0.396 ± 0.0366)	(0.845 ± 0.421)	(2.03 ± 0.558)	(0.477 ± 0.264)
Stomach	159 ± 48.3	126 ± 40.1	234 ± 86.7	197 ± 156	74.1 ± 30.3
	(9.05 ± 5.52)	(4.36 ± 2.82)	(17.2 ± 1.05)	(26.5 ± 19.8)	(3.02 ± 2.08)
Small intestine	21.1 ± 3.72	32.9 ± 18.3	21.0 ± 2.44	20.9 ± 1.31	13.8 ± 5.30
	(1.10 ± 0.117)	(0.989 ± 0.385)	(1.65 ± 0.442)	(3.43 ± 1.29)	(0.530 ± 0.270)
Large intestine	17.3 ± 7.20	28.5 ± 24.2	49.7 ± 15.9	21.7 ± 19.6	16.1 ± 9.72
	(0.970 ± 0.564)	(1.40 ± 1.88)	(4.25 ± 2.86)	(3.00 ± 2.20)	(0.513 ± 0.186)
Lung	311 ± 209*	121 ± 55.6*	144 ± 75.9*	178 ± 63.5	121 ± 85.3
	(15.8 ± 8.37)*	(3.85 ± 1.78)	(10.4 ± 4.38)*	(27.0 ± 3.81)	(4.14 ± 2.23)
Heart	2.24 ± 0.511	3.95 ± 2.01	2.45 ± 0.978	2.45 ± 2.47	1.71 ± 1.09
	(0.118 ± 0.0270)	(0.111 ± 0.0134)	(0.180 ± 0.0229)	(0.350 ± 0.282)	(0.0589 ± 0.0276)
Fat	3.23 ± 0.964	4.30 ± 1.29	3.81 ± 1.11	6.10 ± 4.48	1.58 ± 0.489
	(0.167 ± 0.0340)	(0.174 ± 0.167)	(0.286 ± 0.0328)	(0.988 ± 0.680)	(0.0599 ± 0.227)

* Statistically different (*P*-value < 0.05) from FBX mice.