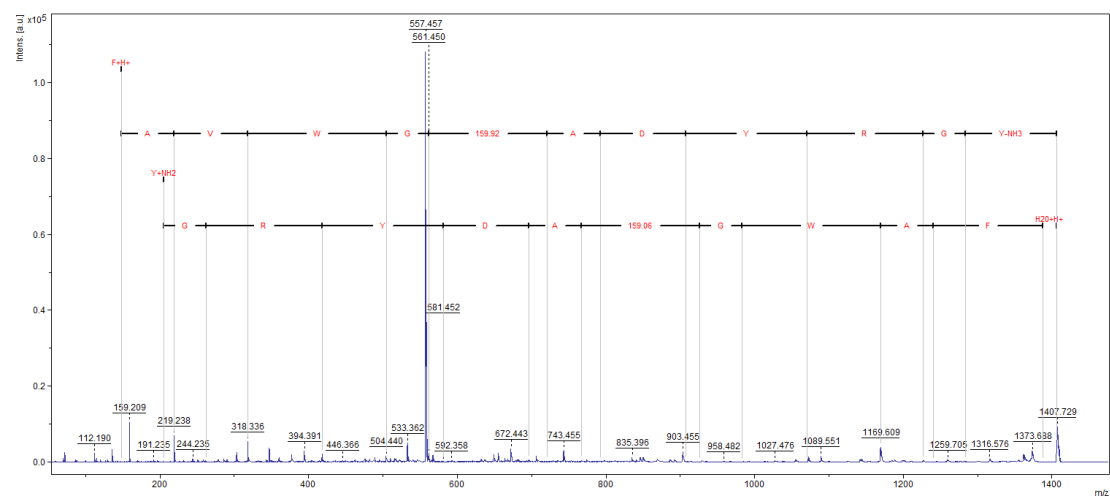


**Supplementary table S1.** IC<sub>25</sub> and IC<sub>50</sub> values for salamandrin-I in human myeloid cell lines

|                    | HL-60 | HEL  | K562 |
|--------------------|-------|------|------|
| Salamandrin I (μM) |       |      |      |
| IC25               | 23.5  | 21.6 | 13.8 |
| IC50               | 27.0  | 26.2 | 31.3 |

HL-60: LMA M2 cell line; HEL: LMA M6 cell line; K562: chronic myeloid leucemia cell line



**Figure S1.** MS/MS spectrum of synthetic salamandrin-I, [M + H]<sup>+</sup> = 1406.6 Da; amino acid sequence determined: FAWWGCADYRGY-NH<sub>2</sub>.