

Cascade Amplification of Pyroptosis and Apoptosis for Cancer Therapy through a Black Phosphorous-Doped Thermosensitive Hydrogel

Qing Wu¹, Qinghui Ma², Jun Ma³, Junpeng Chen¹, Baoding Zhuang¹, Shanglin Yang,¹
Jinji Liu², Shunqian Wen^{1*}

¹ Department of Hepatic-biliary-pancreatic Surgery, Affiliated Foshan Hospital of Southern Medical University, Foshan 528000, China

² Department of Oncology, Affiliated Foshan Hospital of Southern Medical University, Foshan 528000, China

³ Department of Gastroenterology, Affiliated Foshan Hospital of Southern Medical University, Foshan 528000, China

***To whom correspondence should be addressed:**

Shunqian Wen; E-mail: wenshunqian0662@163.com

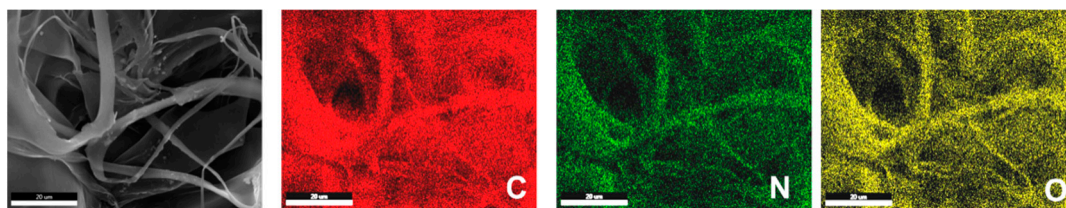


Figure S1. SEM photo and elemental mapping of PLEL hydrogel, scale bar = 20 μm .

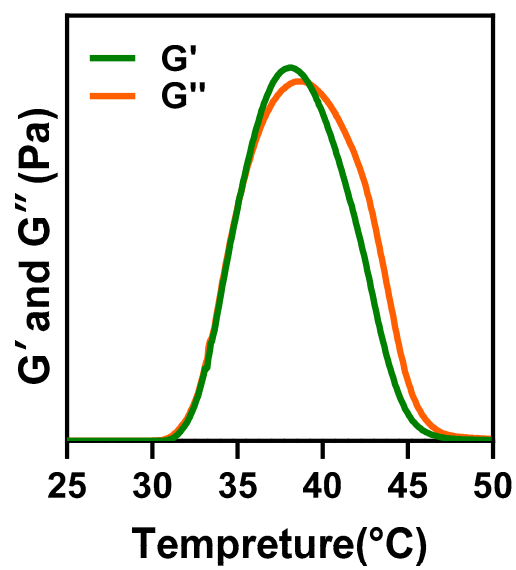


Figure S2. Rheological analysis of PLEL hydrogel.

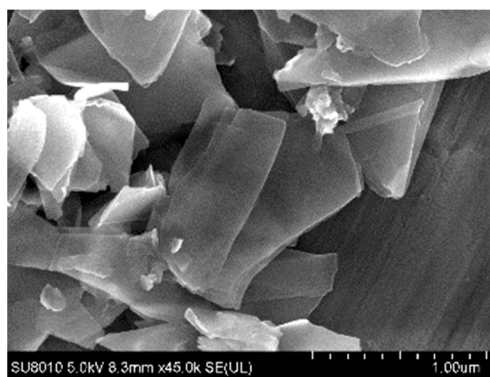


Figure S3. SEM photo of BP nanosheets.

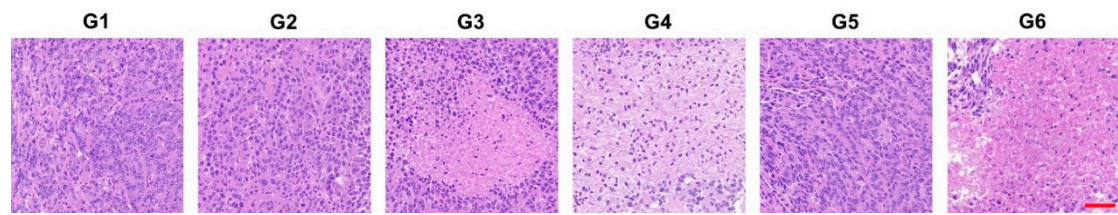


Figure S4. H&E staining of tumor slices from different treatment groups, scale bar = 50 μm .

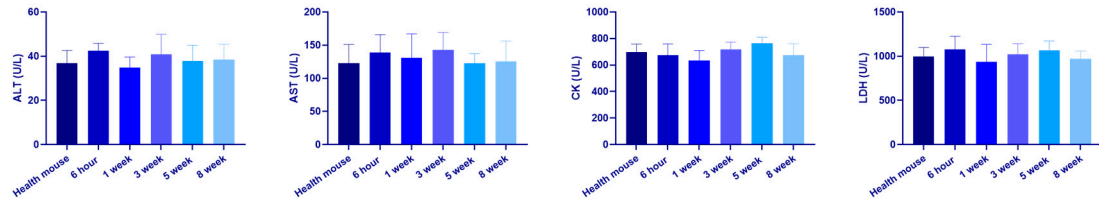


Figure S5. Biochemical indices of mice treated with RSL3/BP@PLEL at specific time intervals, all data are shown as mean \pm S.D. (n = 3).