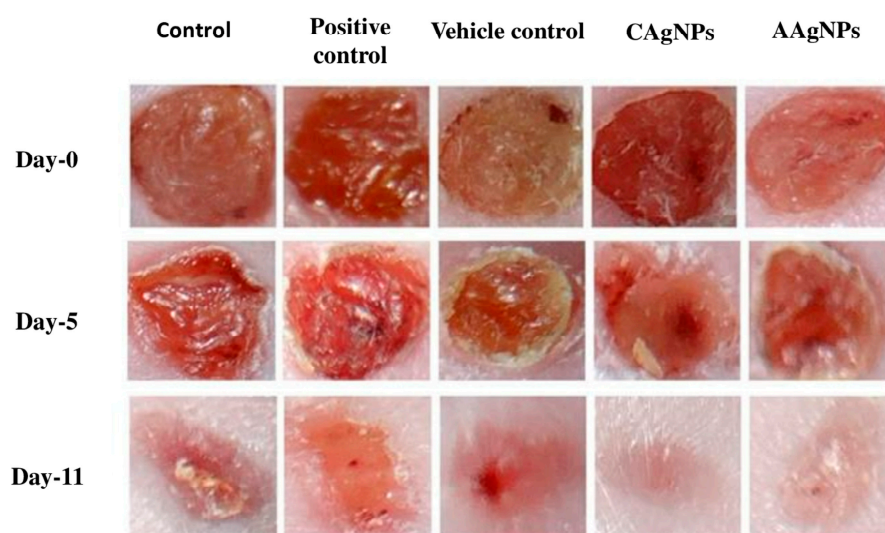
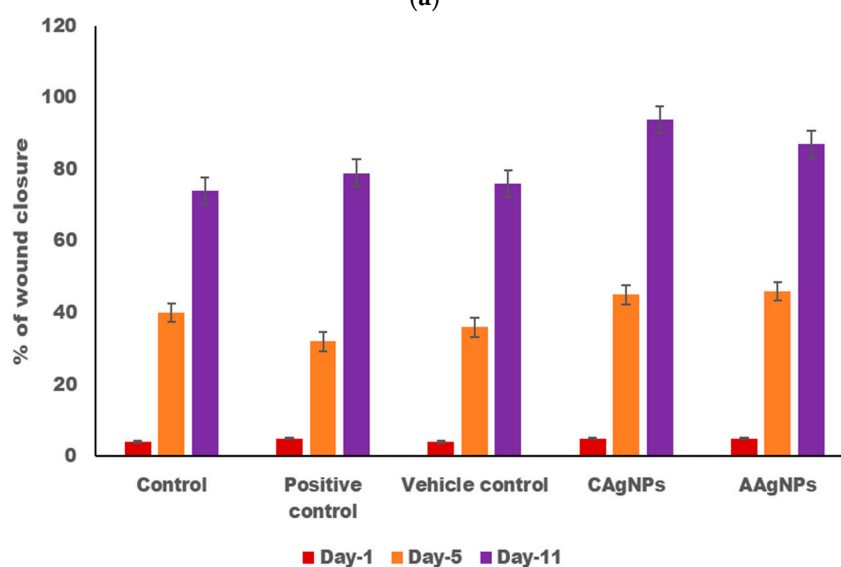


Figure S1. TEM images of biosynthesized silver nanoparticles from (A) *Catharanthus roseus* and (B) *Azadirachta indica* plant extracts [34].



(a)



(b)

Figure S2. (a): Representative photographs showing wound closure after treatment with green-synthesized silver nanoparticles of *Catharanthus roseus* and *Azadirachta indica*. (b): Graphical representation of percent of wound closure after treatment with green-synthesized silver nanoparticles of *Catharanthus roseus* and *Azadirachta indica*.