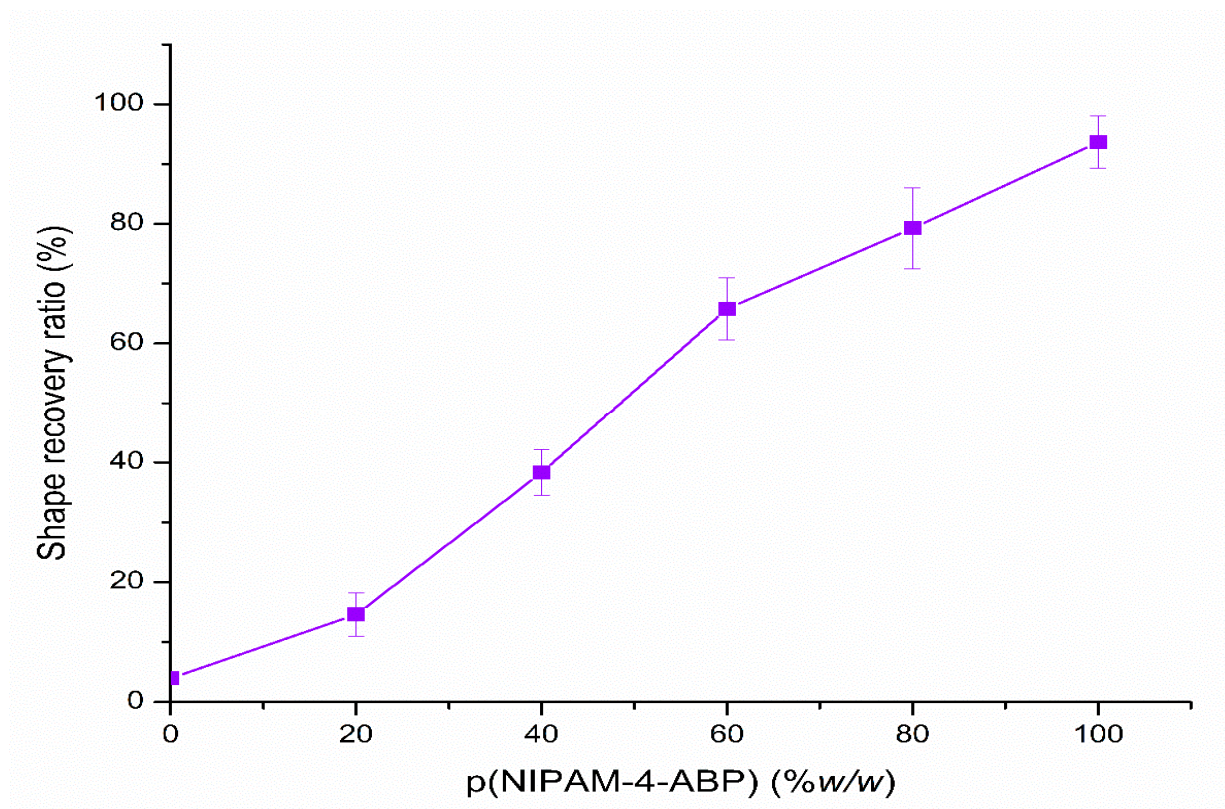
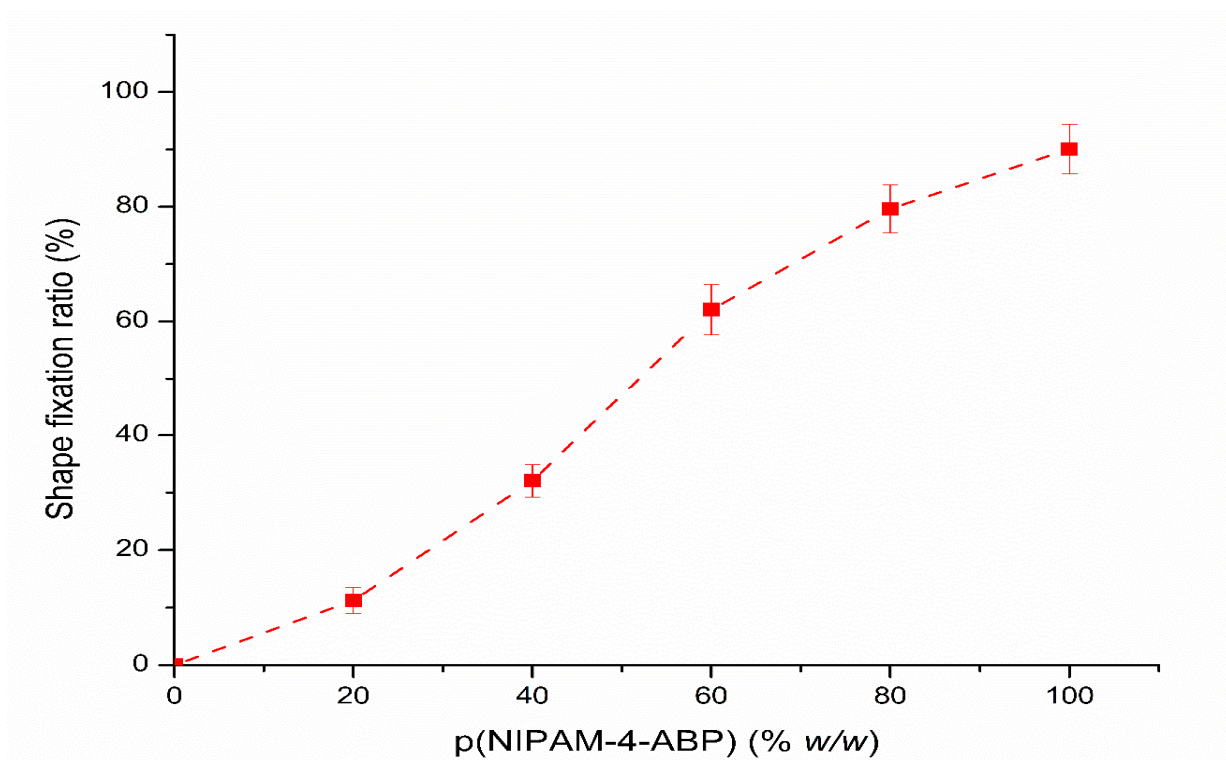


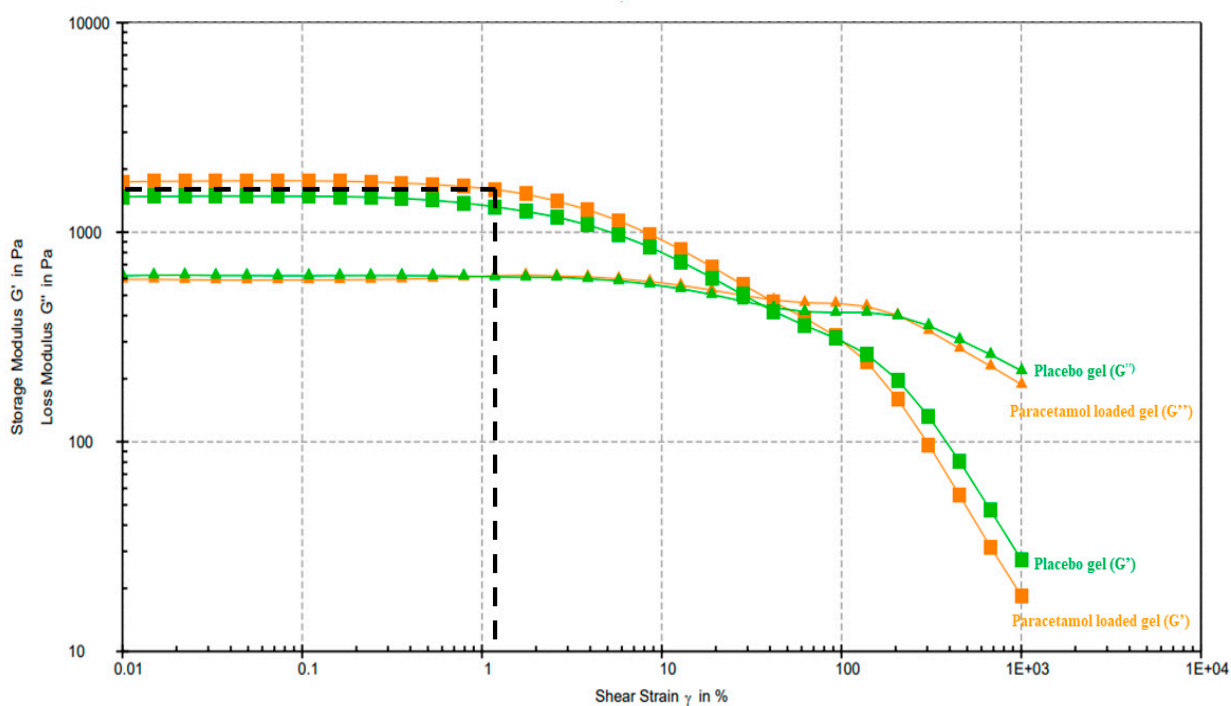
Supplementary Figures



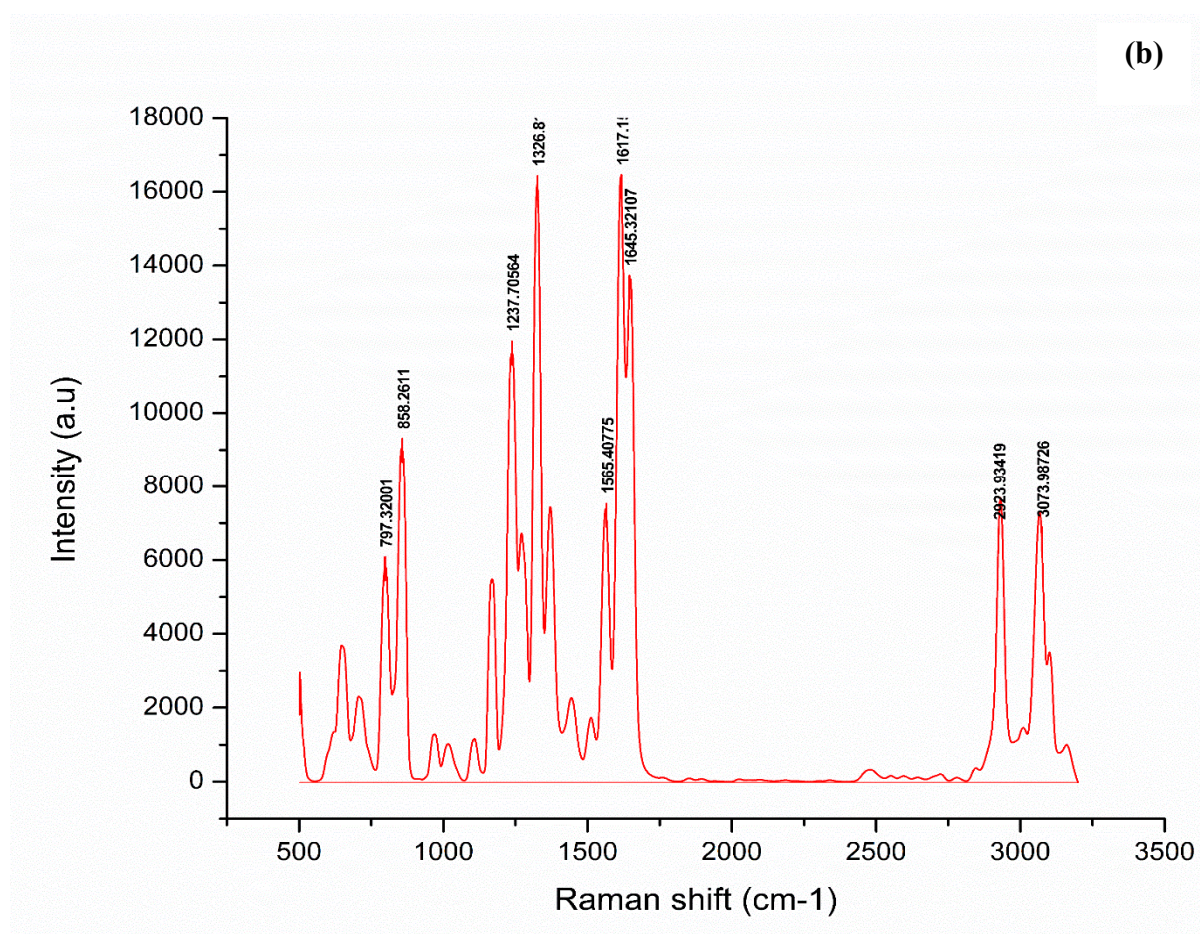
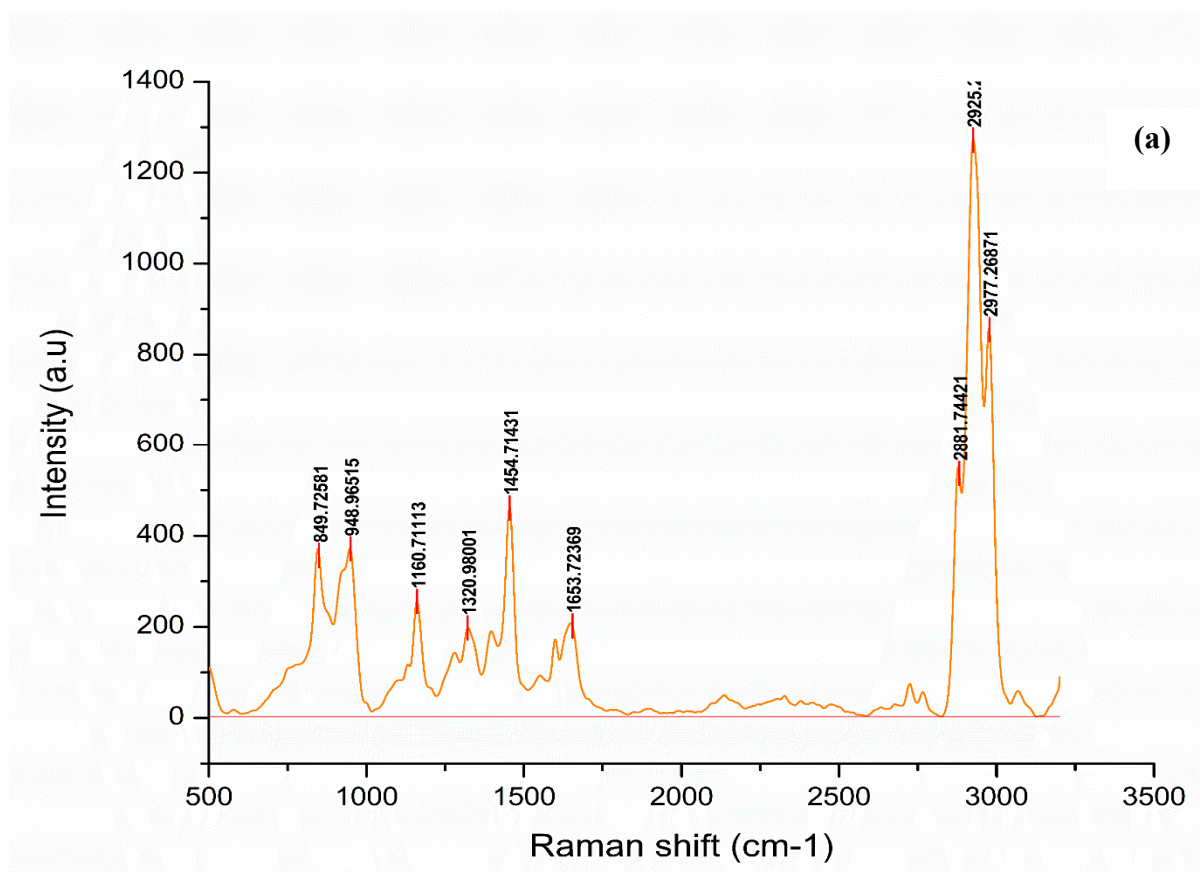
Supplementary Figure S1. Relation between shape recovery ratio (%) versus % w/w of p(NIPAM-4-ABP). The experiment was performed in n=6.

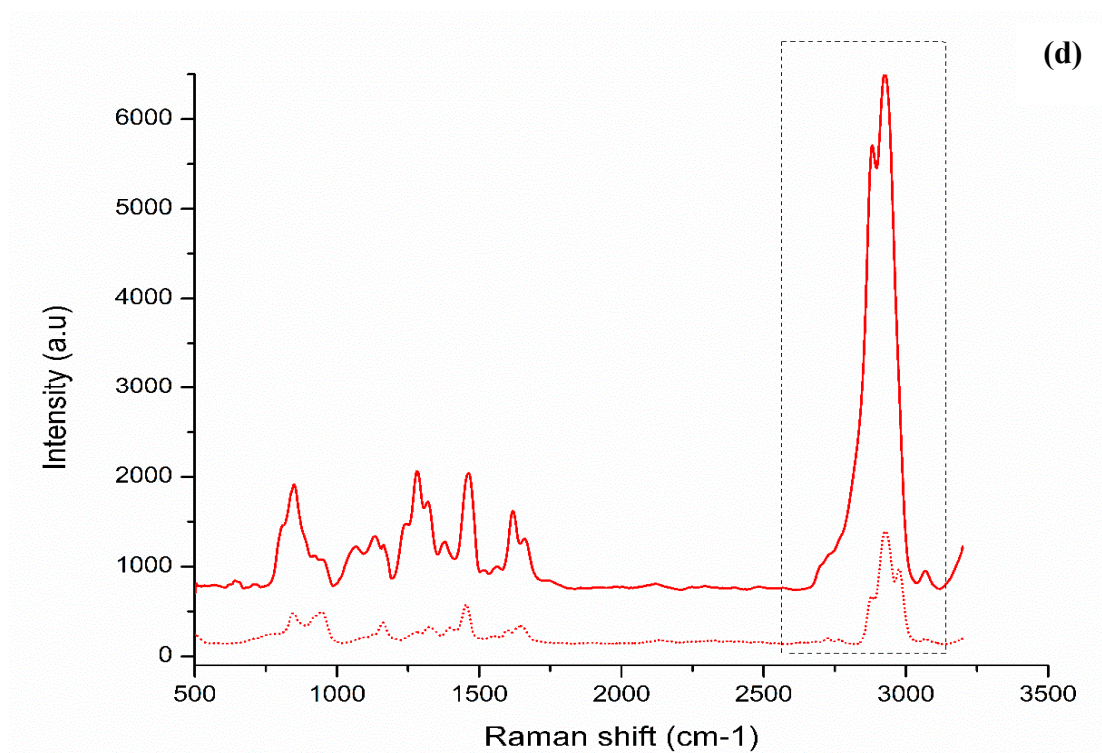
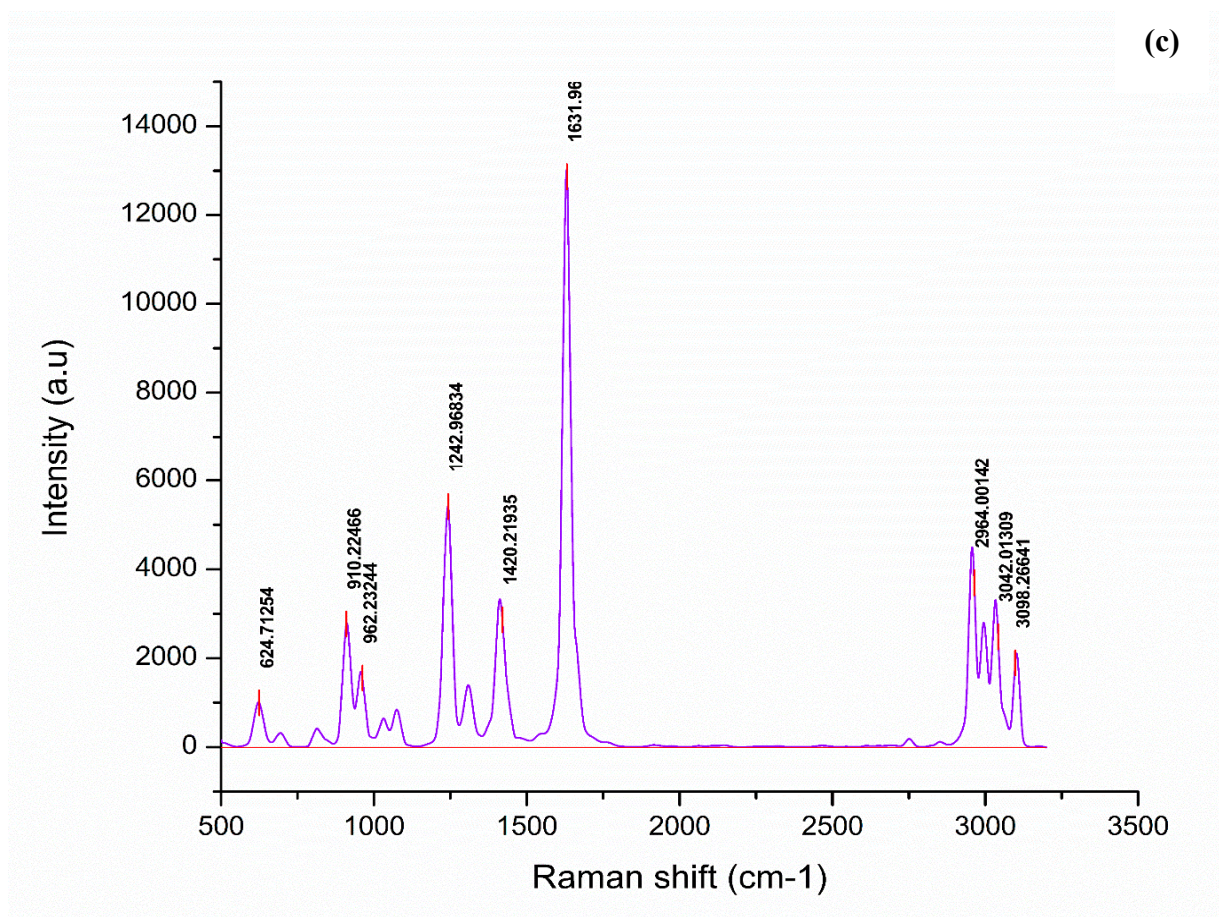


Supplementary Figure S2: Relation between shape fixation ratio (%) versus % w/w of p(NIPAM-4-ABP). The experiment was performed in n=6.



Supplementary Figure S3: Amplitude sweep test as a function of storage modulus (G') and Loss modulus (G''). $G' > G''$ sample has solid viscoelastic behaviour.





Supplementary Figure S4: Raman spectra of (a) p(NIPAM-4ABP), (b) PCM, (c) BIS, (d) optimized p(NIPAM-4ABP) placebo (.....) and PCM-loaded 3D construct (—).