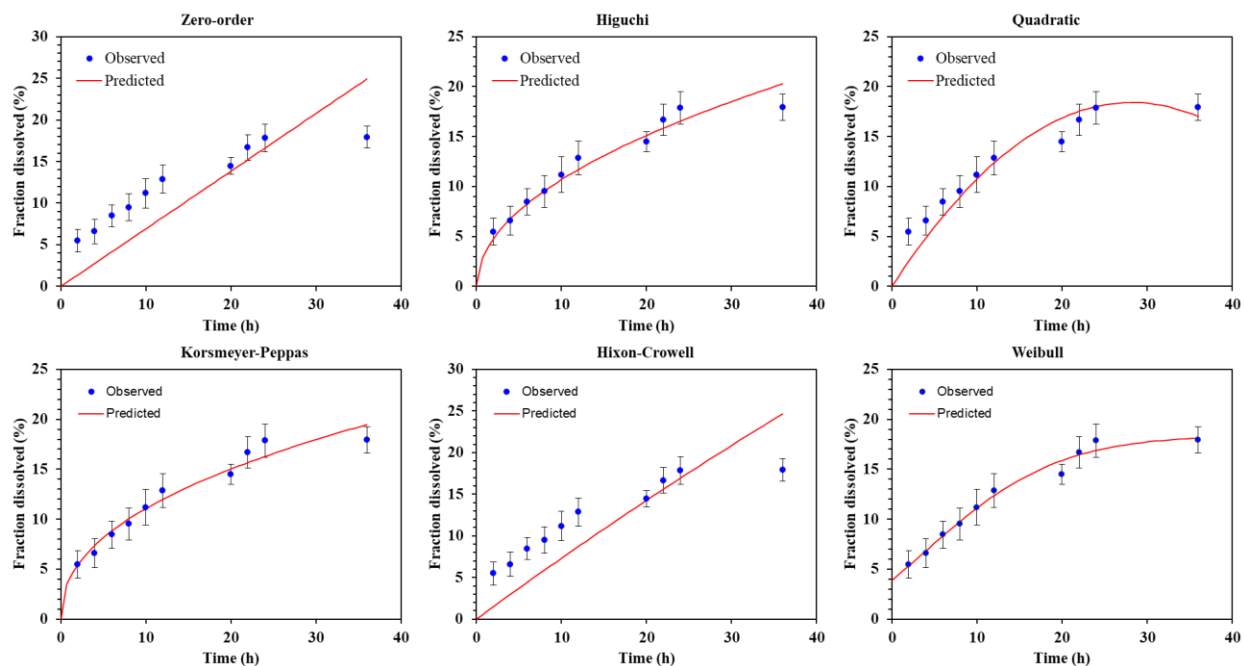
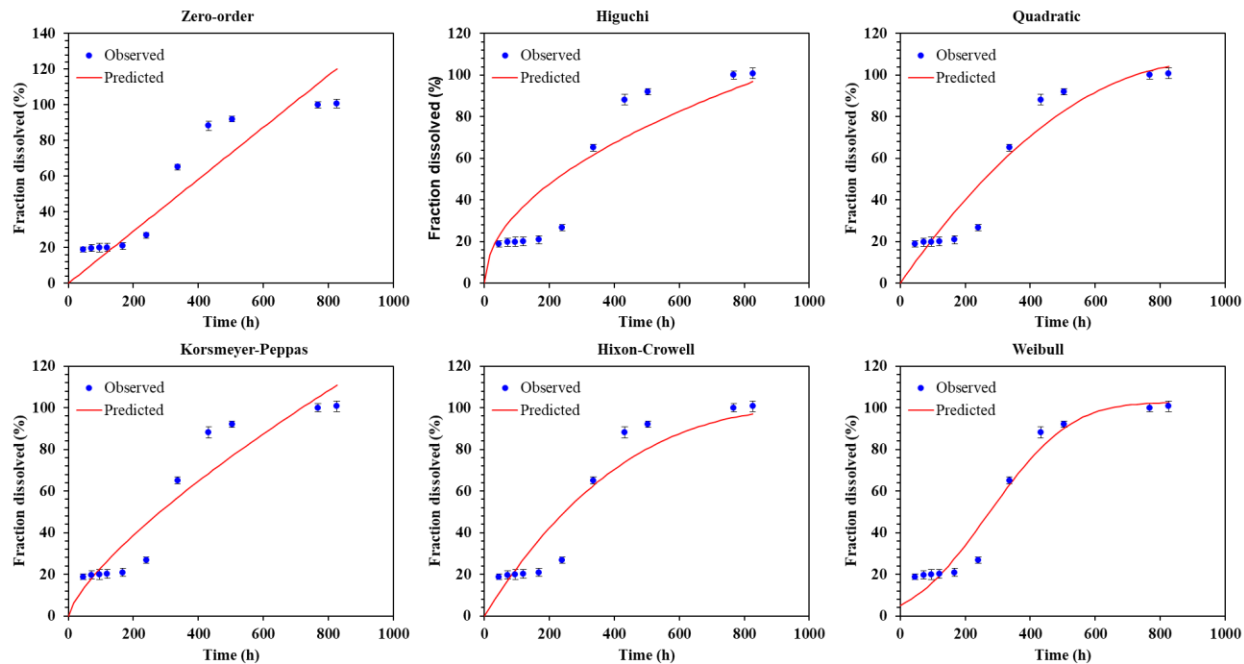


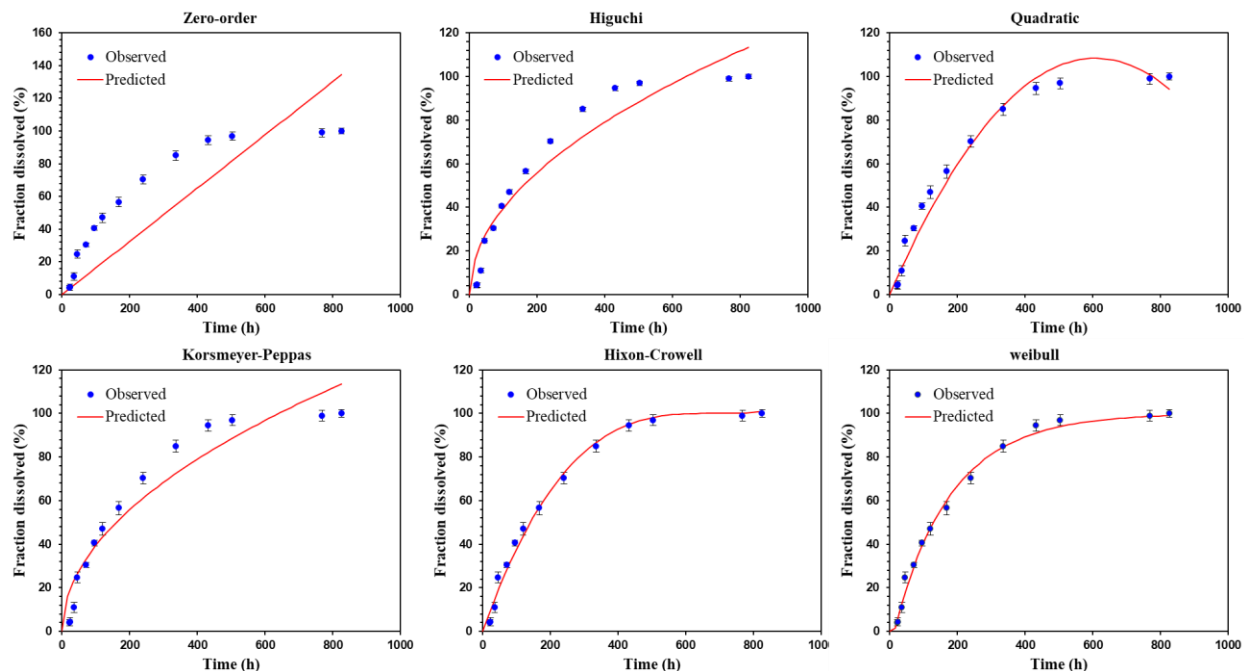
Supplementary Figure S1. Rheology diagram of ISFG (A) and ISFI (B) formulations.



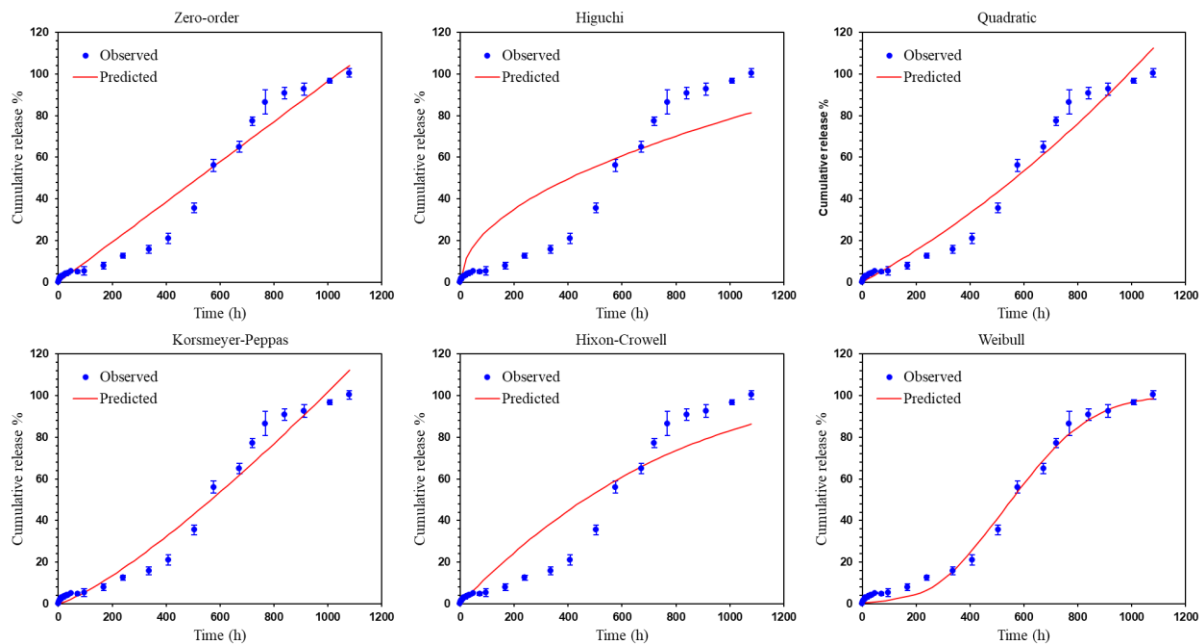
Supplementary Figure S2. Simulation of drug release profile from the optimal formulation of ISFI (2-36 h).



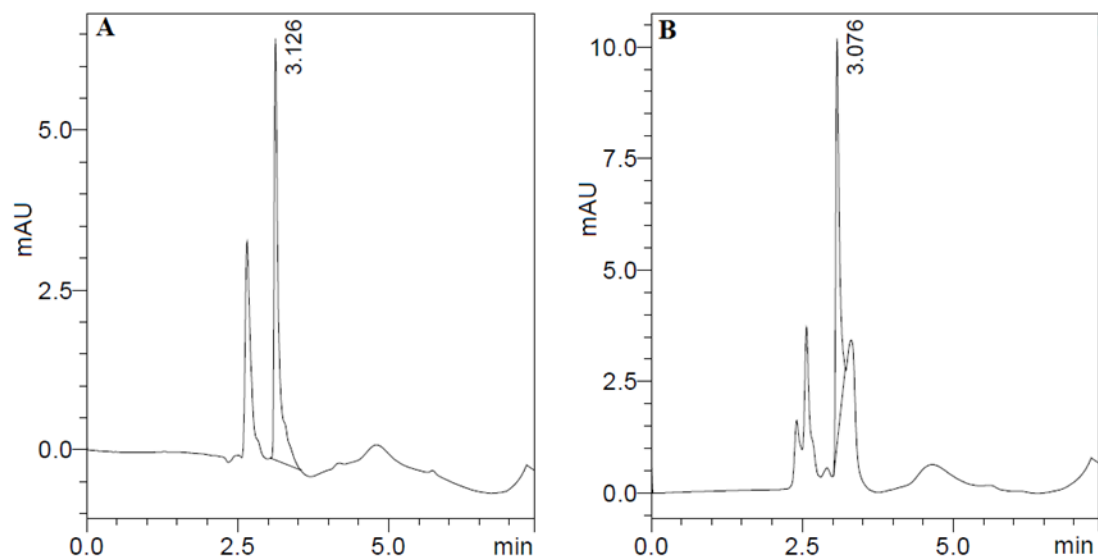
Supplementary Figure S3. Simulation of drug release profile from the optimal formulation of ISFI (46-826 h).



Supplementary Figure S4. Simulation of drug release profile from the optimal formulation of ISFG.



Supplementary Figure S5. Simulation of drug release profile from the Risperdal CONSTA[®].



Supplementary Figure S6. HPLC chromatogram of risperidone (A) and rabbit blood samples taken at week forth (B)