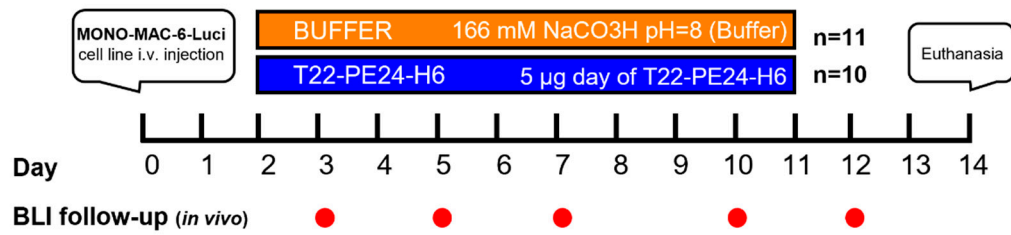
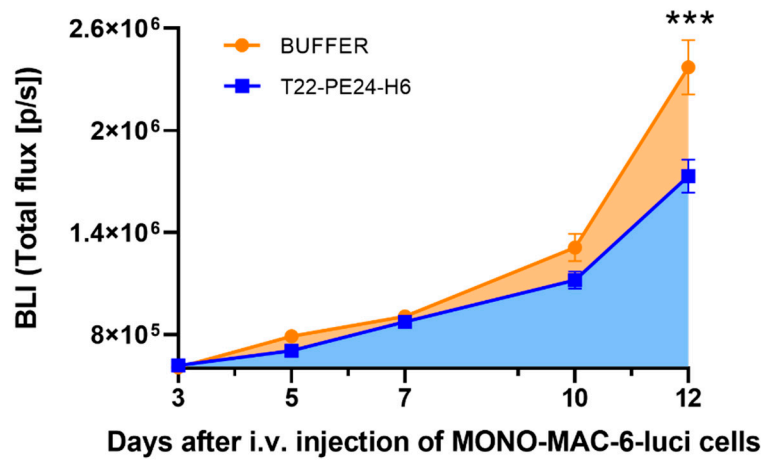


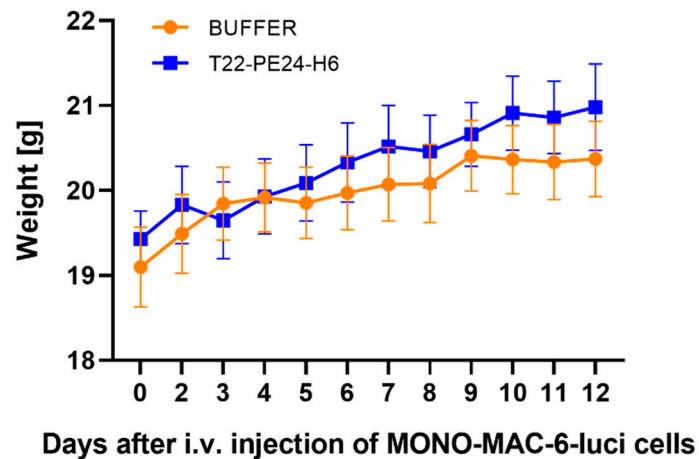
A



B



C



Supplemental Figure S1. Experimental design and evolution of body weight of mice during the study of antineoplastic effect of T22-PE24-H6. (A) Schematic diagram of *in vivo* experimental design. (B) Follow-up of AML dissemination of mice treated with buffer or T22-PE24-H6 over the time. (C) Mean body weights of mice exposed to repeated doses T22-PE24-H6 or buffer over 10 doses. Statistical analysis was performed using T-test or Mann-Whitney *U* test and significant differences between groups are indicated as *** $p \leq 0.005$.