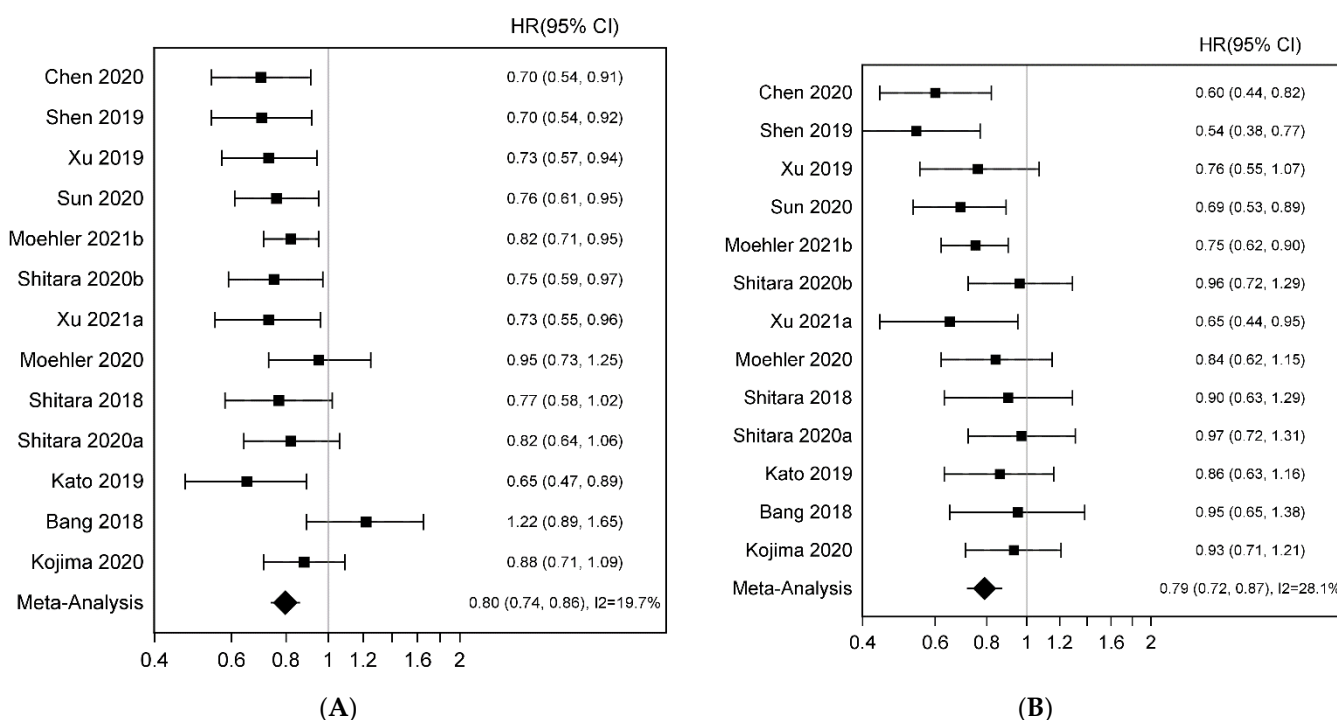
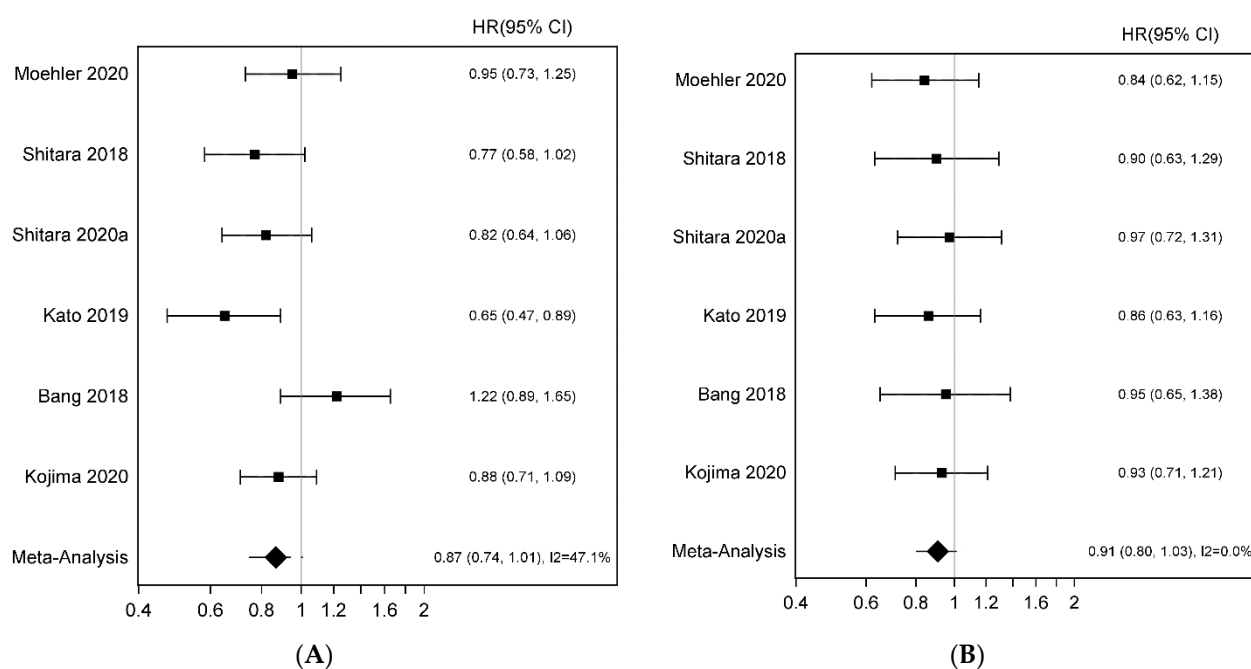


# Supplementary Materials: Anti PD-1 /Anti PDL-1 Inhibitors in Advanced Gastroesophageal Cancers: A Systematic Review and Meta-Analysis of Phase 2/3 Randomized Controlled Trials

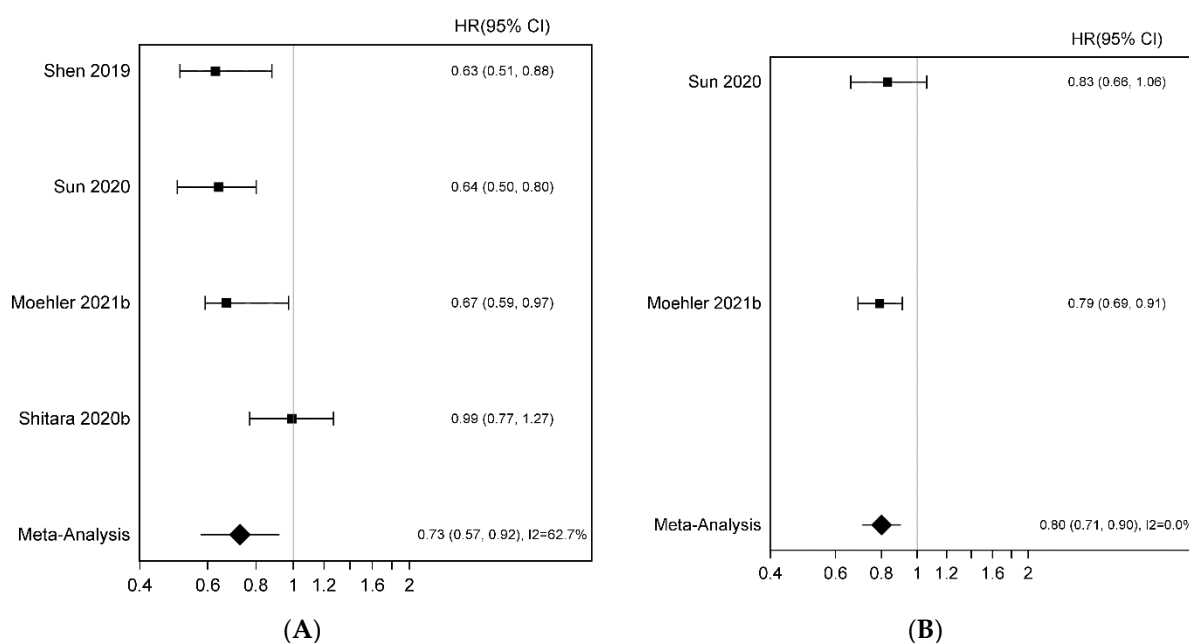
Kanak Parmar; Sai Subramanyam; Kristopher Attwood; Duke Appiah; Christos Fountzilas and Sarbajit Mukherjee



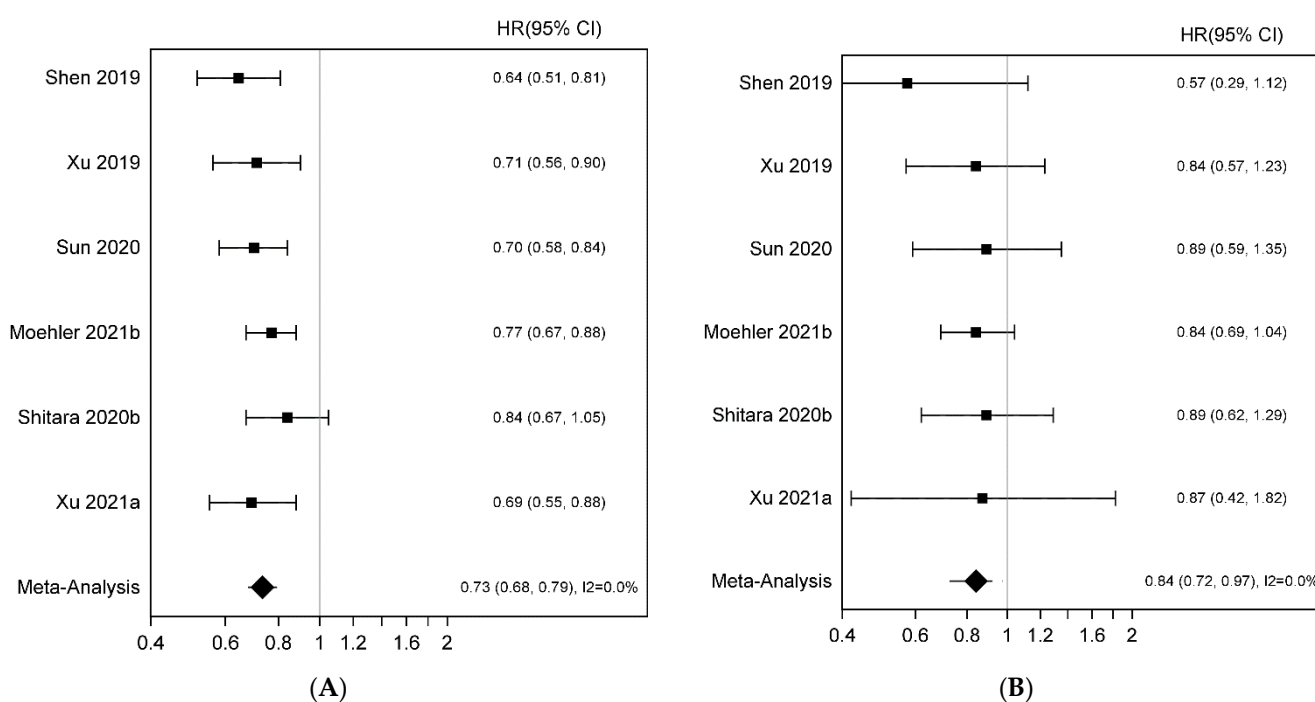
**Figure S1.** Overall population A: Forest plot for overall survival in the younger population; B: Forest plot for the overall survival for in the older population.



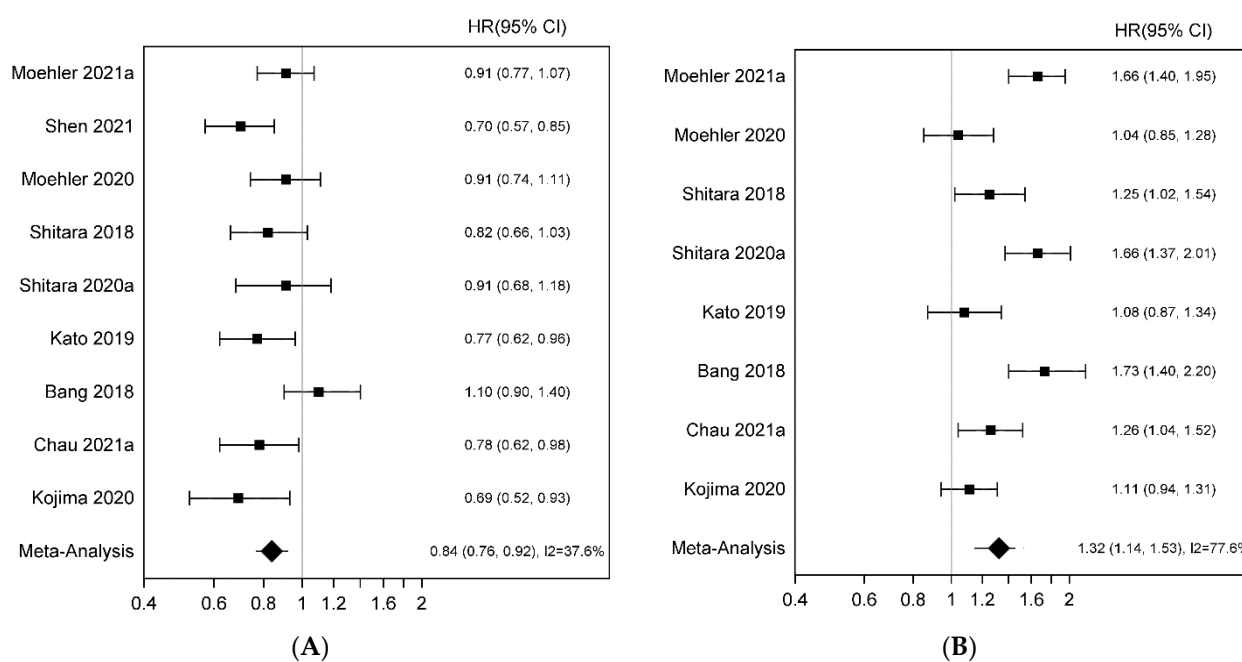
**Figure S2.** Immune checkpoint inhibitor and chemotherapy versus chemotherapy alone A Forest plot for overall survival in younger age group B Forest plot for overall survival in the older age group



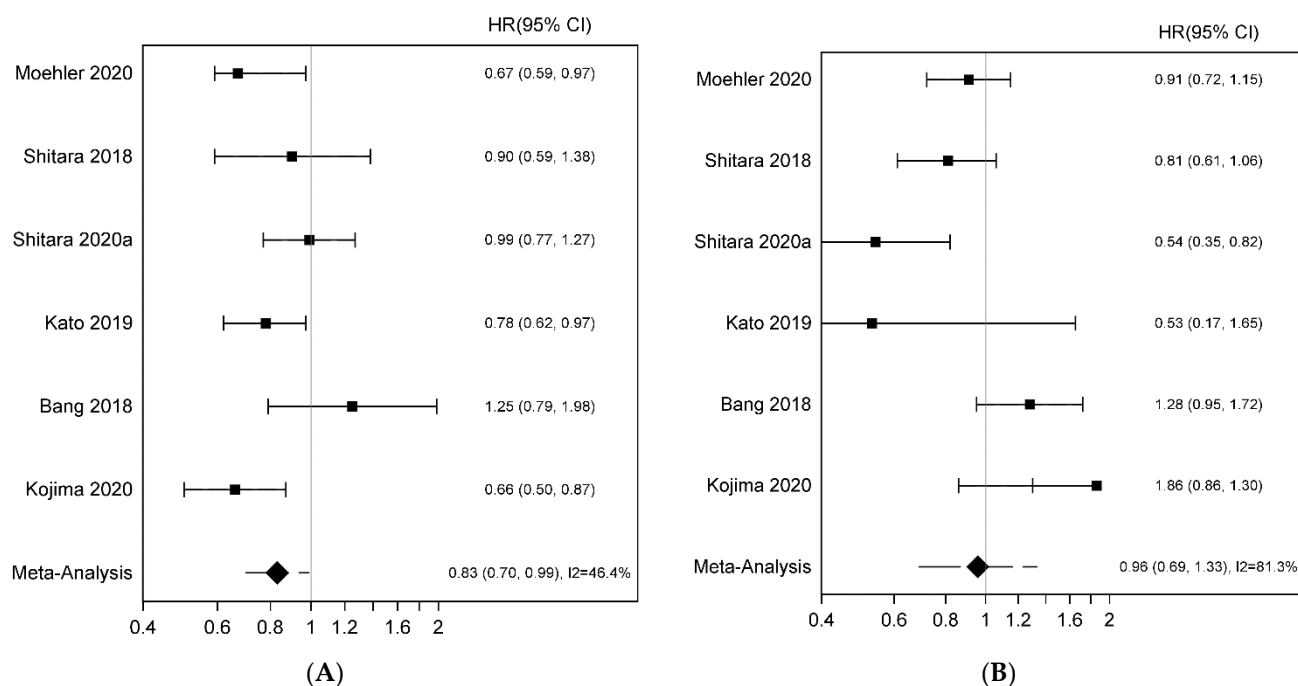
**Figure S3.** Immune checkpoint inhibitor and chemotherapy versus chemotherapy alone; A. Forest plot for overall survival in Asians; B. Forest plot for overall survival in Whites



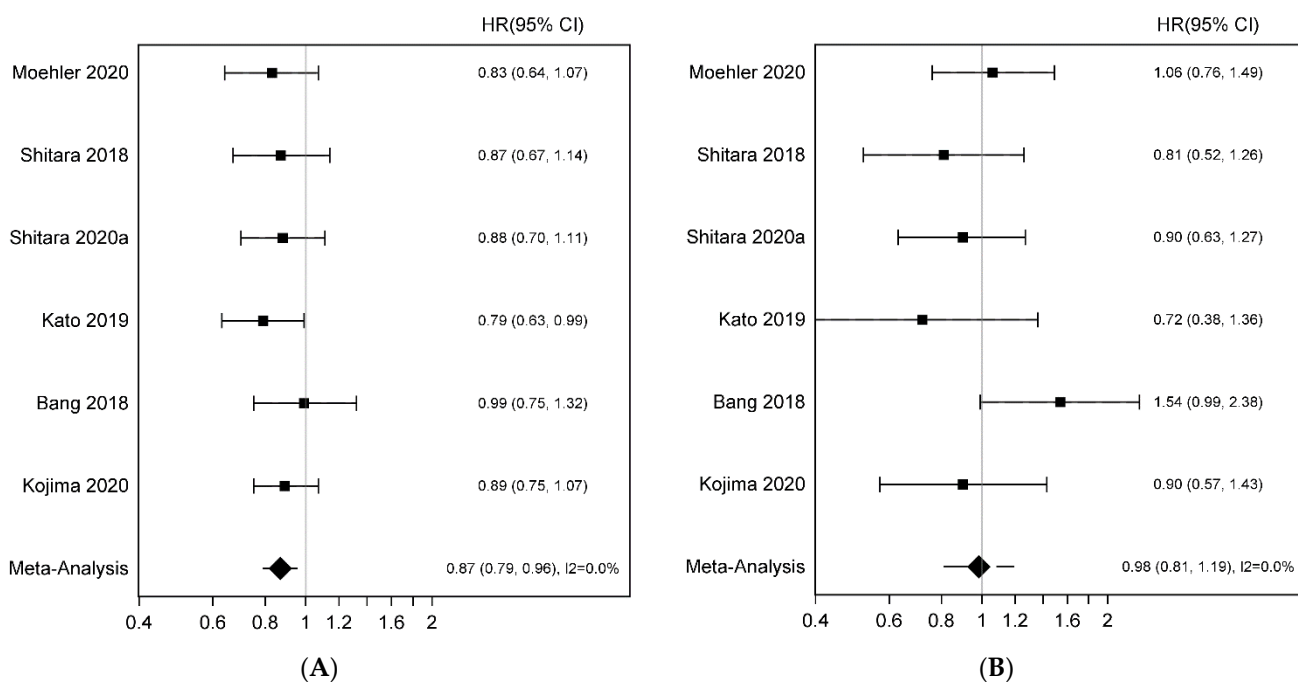
**Figure S4.** Immune checkpoint inhibitor and chemotherapy versus chemotherapy alone; A. Forest plot for overall survival in males; B. Forest plot for overall survival in females



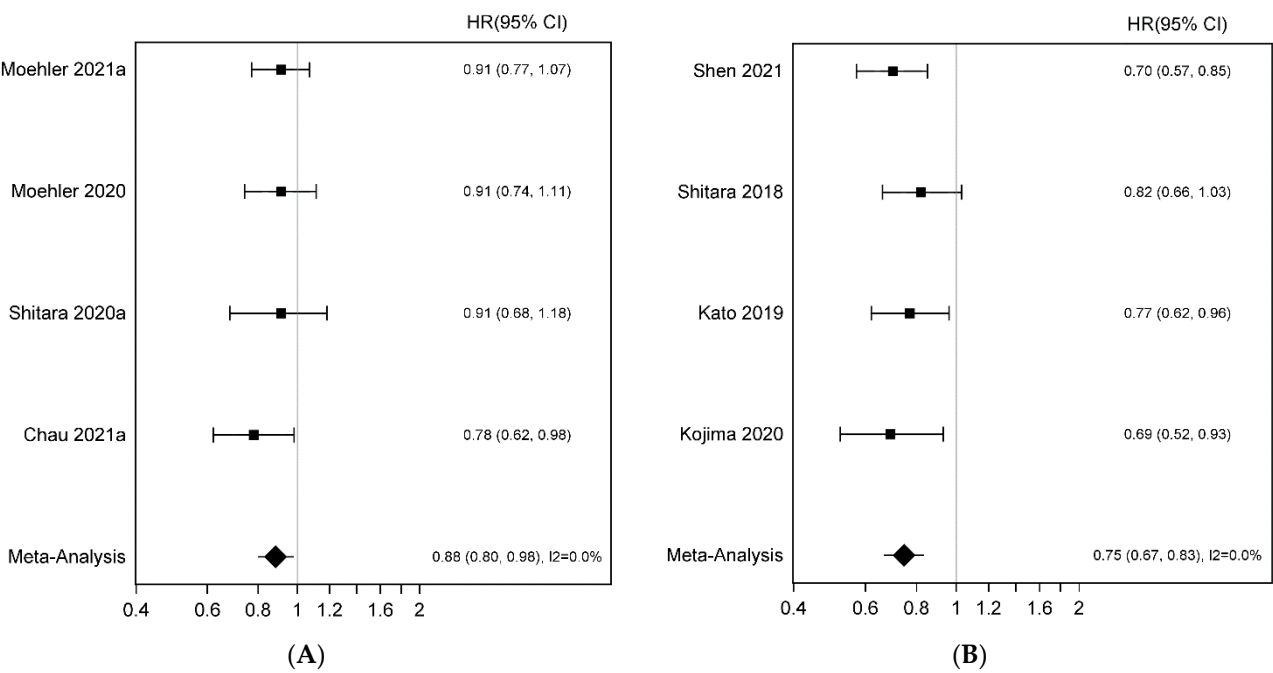
**Figure S5.** Immune checkpoint inhibitor versus chemotherapy; A. Forest plot for overall survival; B. Forest plot for progression free survival.



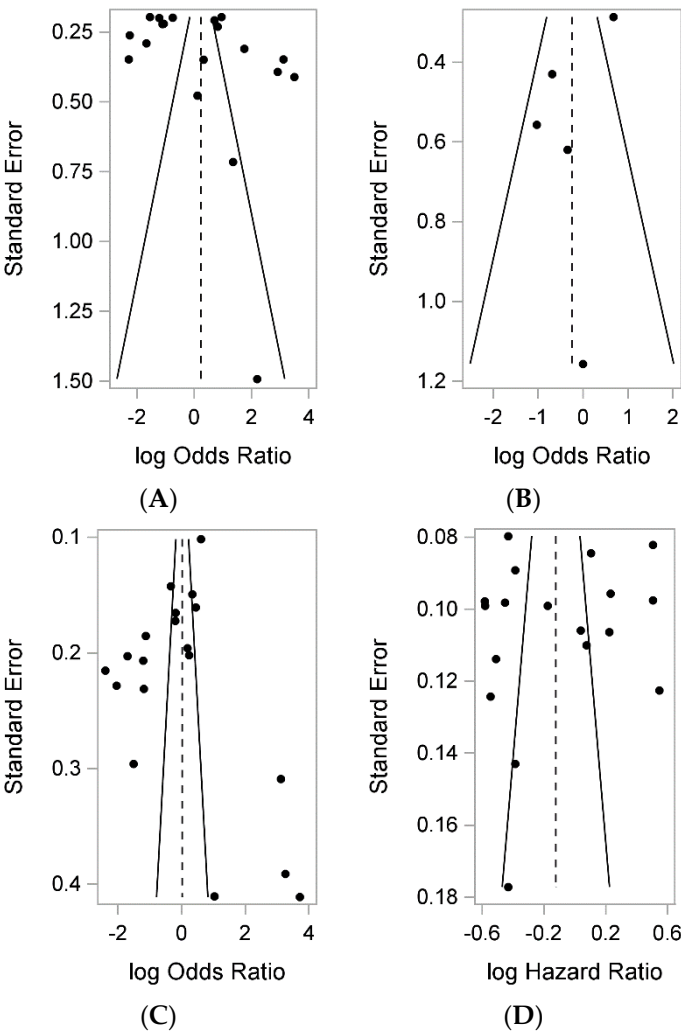
**Figure S6.** Immune checkpoint inhibitor versus chemotherapy: A. Forest plot for overall survival in Asians; B. Forest plot for overall survival in Whites

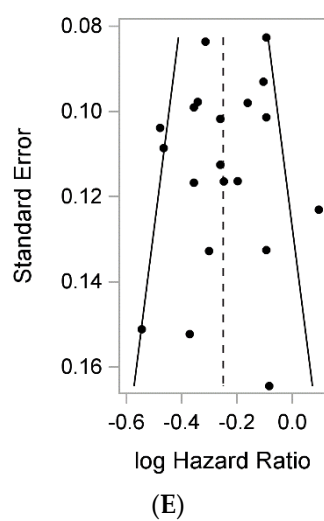


**Figure S7.** Immune checkpoint inhibitor versus chemotherapy: A. Forest plot for overall survival in males; B. Forest plot for overall survival in females.



**Figure S8.** Overall survival in immune checkpoint inhibitor versus chemotherapy: A. First line setting; B. Second line setting.





**Figure S9.** Funnel plots for A. Treatment related adverse event (TRAE); B. Any adverse event (AE); C. Grade 3 + related AE; D. Progression free survival, E. Overall survival