

SUPPLEMENTARY MATERIALS

Add sugar to chitosan: mucoadhesion and in vitro intestinal permeability of mannosylated chitosan nanocarriers

Sadaf Ejaz,¹ Bridget Hogg,² Delyan R. Hristov,² David J. Brayden,^{2,3}
Muhammad Imran,^{1,*} Sourav Bhattacharjee^{2,*}

¹Department of Biosciences, COMSATS University Islamabad (CUI), Park Road, Islamabad, Pakistan

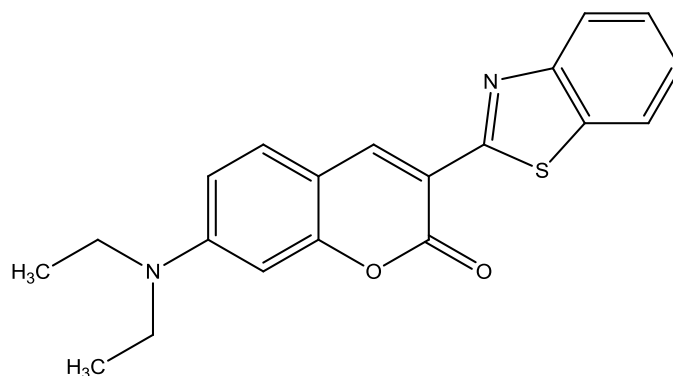
²School of Veterinary Medicine, University College Dublin (UCD), Belfield, Dublin 4, Ireland

³Conway Institute of Biomolecular and Biomedical Research, University College Dublin (UCD), Belfield, Dublin 4, Ireland

*Corresponding authors:

Muhammad Imran (Email: m.imran@comsats.edu.pk; T.: +92 322 6017784)

Sourav Bhattacharjee (Email: sourav.bhattacharjee@ucd.ie; T.: +353 1 716 6271)



Molecular structure of C6

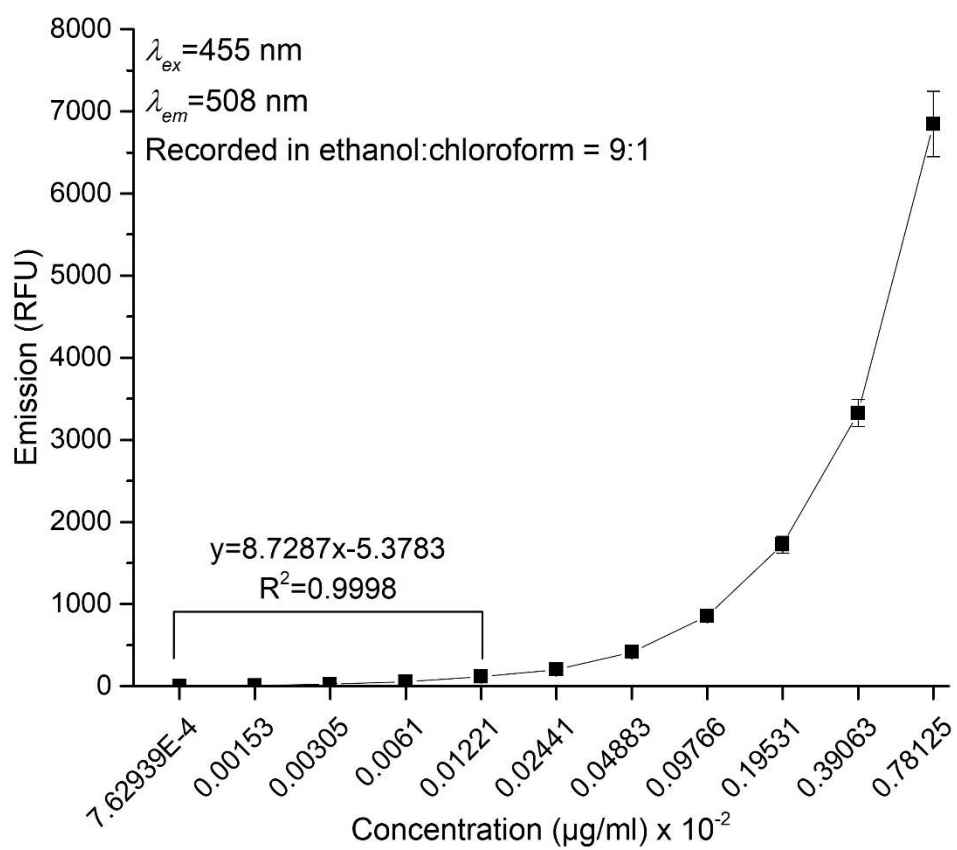


Figure S1: Development of a calibration curve for quantification of C6 based on emission spectrum. Results are shown as mean \pm SD ($n=2$), and the equation of calibration curve is given within the figure.

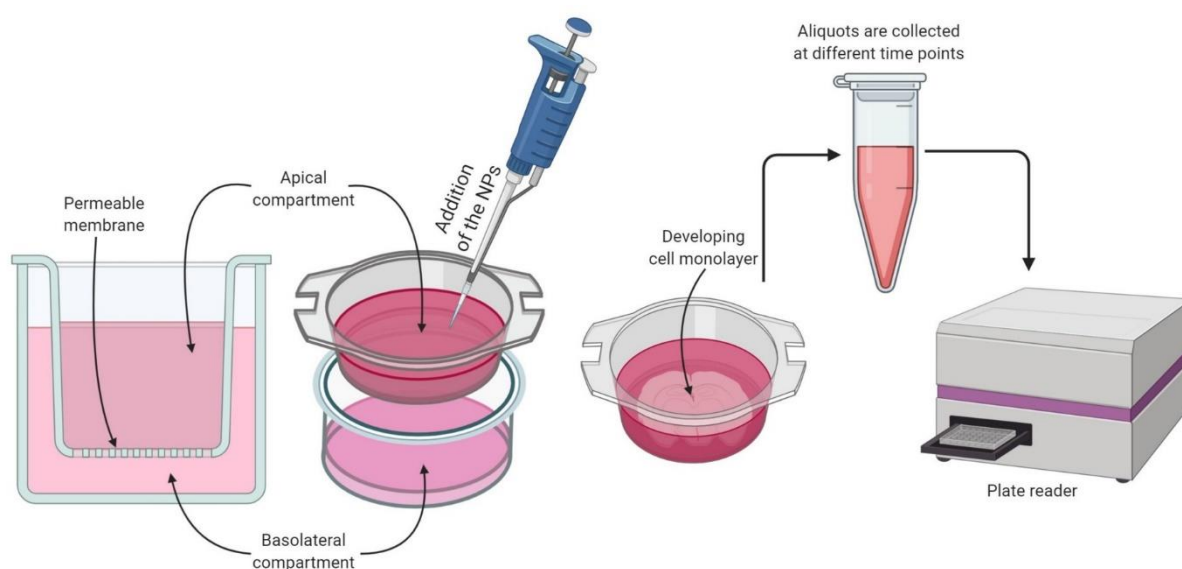


Figure S2: The principle of transwell experiments with Caco-2 monolayers.

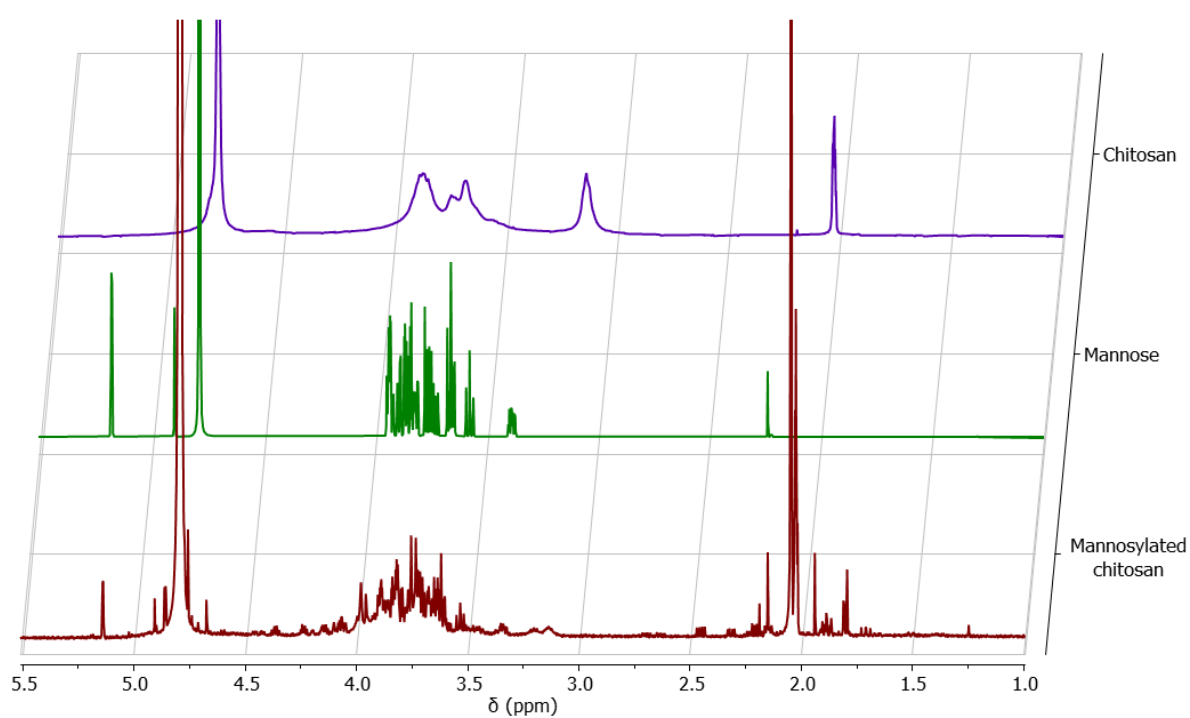


Figure S3: Stacked ^1H spectra of chitosan, mannose and mannosylated chitosan.

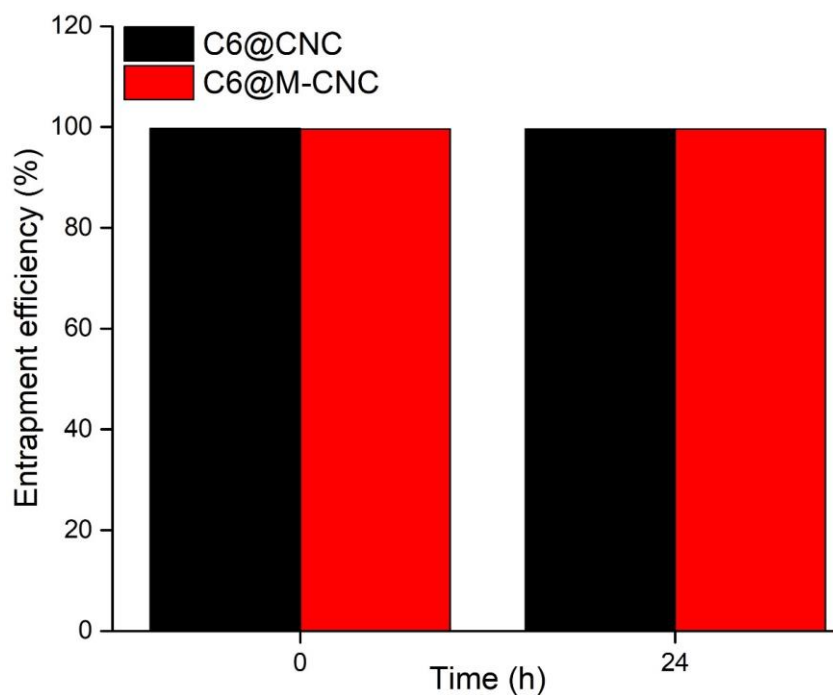


Figure S4: Entrapment efficiency (%) of C6 in C6@CNCs and C6@M-CNCs. Results are shown as mean \pm SD (n=3).

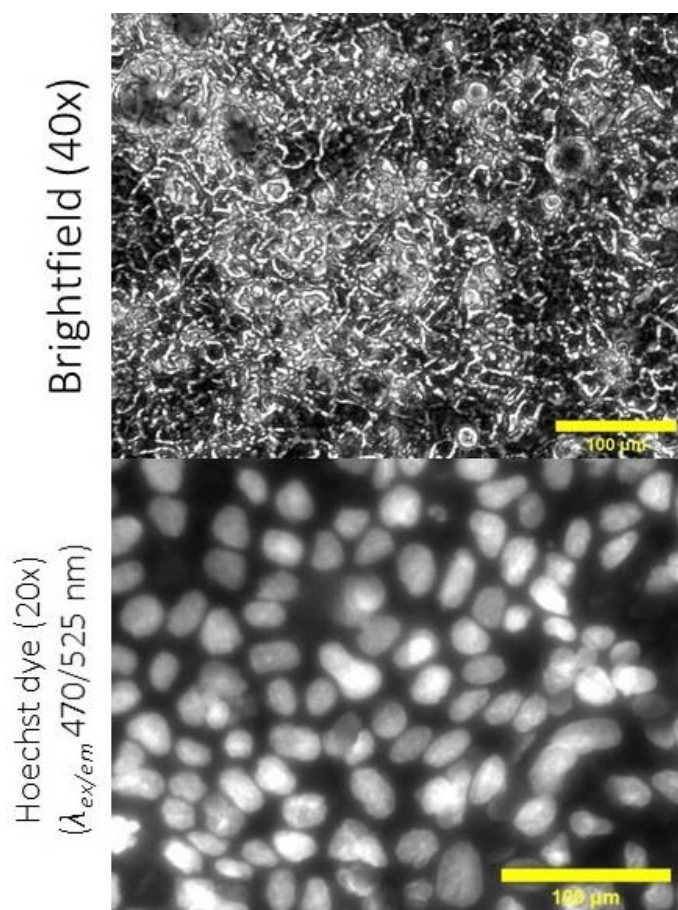


Figure S5: The brightfield (upper layer, 40 \times) and epifluorescence microscopy ($\lambda_{ex/em}$ =470/525 nm, 20 \times , lower layer) on Caco-2 monolayers stained with Hoechst dye to image the cellular nuclei. Scale bars (100 μ m) are embedded within the figures.