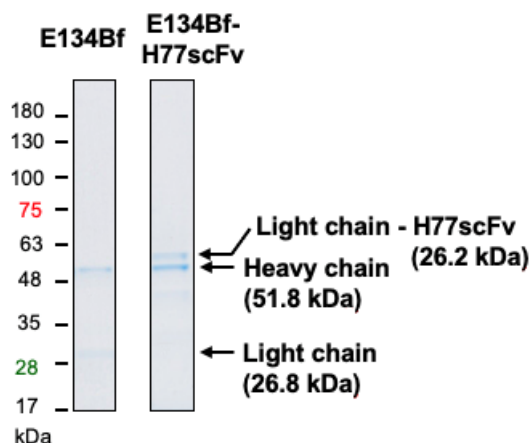
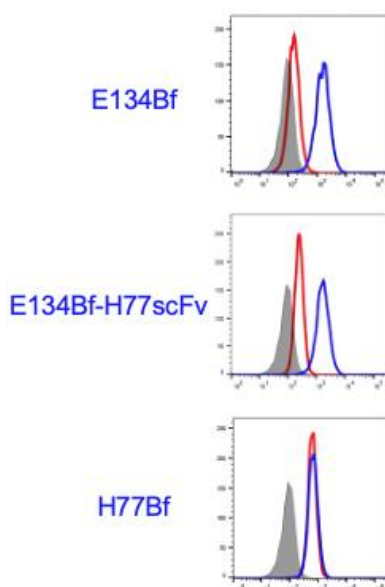


Supplementary Figures

Antitumor Activity of an Anti-EGFR/HER2 Bispecific Antibody in a Mouse Xenograft Model of Canine Osteosarcoma



Supplementary Figure S1. Purity of E134Bf-H77scFv. E134Bf (0.5 μ g) and E134Bf-H77scFv (0.5 μ g) were denatured by sodium dodecyl sulfate (SDS) sample buffer (Nacalai Tesque, Inc.). Proteins were separated on 5%–20% polyacrylamide gel (FUJIFILM Wako). The gel was stained by Bio-Safe CBB G-250 Stain (Bio-Rad Laboratories, Inc.).



Supplementary Figure S2. Flow cytometry using the EGFR peptide containing E134Bf epitope. E134Bf (1 μ g/ml), E134Bf-H77scFv (1 μ g/ml), and each mAb plus the EGFR peptide (aa 375-394, 30 μ g/ml) [44], or control (blocking buffer) were reacted with D-17 cells for 30 min at 4°C, followed by treatment with Alexa Fluor 488-conjugated anti-dog IgG. Fluorescence data were analyzed using the SA3800 Cell Analyzer (Sony Corp.). Blue lines; each mAb, red lines; each mAb + EGFR peptide (aa 375-394), filled gray; control.