

## Supplementary Information

# DNAJB6- containing Extracellular Vesicles as Chaperone Delivery Systems: a proteomic analysis

Bhagyashree S. Joshi <sup>1</sup>, Hector Garcia Romeu <sup>2</sup>, Aldy Aliyandi <sup>2</sup>, Marcel P. de Vries <sup>3</sup> and Inge S. Zuhorn <sup>1,\*</sup>

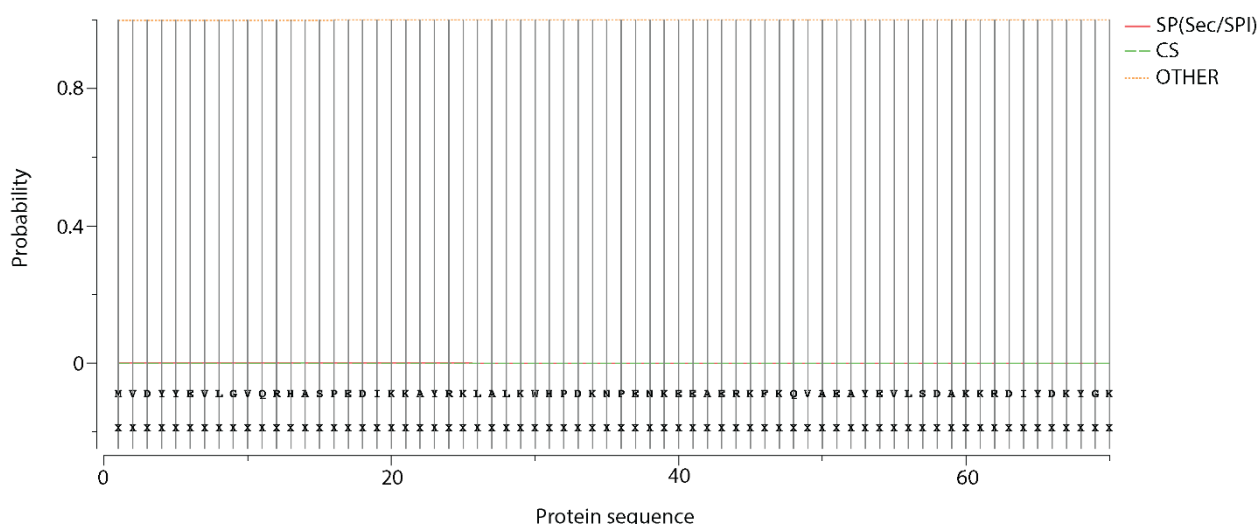
<sup>1</sup> Department of Biomedical Engineering, University Medical Center Groningen, University of Groningen, Antonius Deusinglaan 1, 9713AV Groningen, The Netherlands

<sup>2</sup> Groningen Research Institute of Pharmacy, University Medical Center Groningen, University of Groningen, Antonius Deusinglaan 1, 9713AV Groningen, The Netherlands

<sup>3</sup> Interfaculty Mass Spectrometry Center, University Medical Center Groningen, University of Groningen, Antonius Deusinglaan 1, 9713AV Groningen, The Netherlands

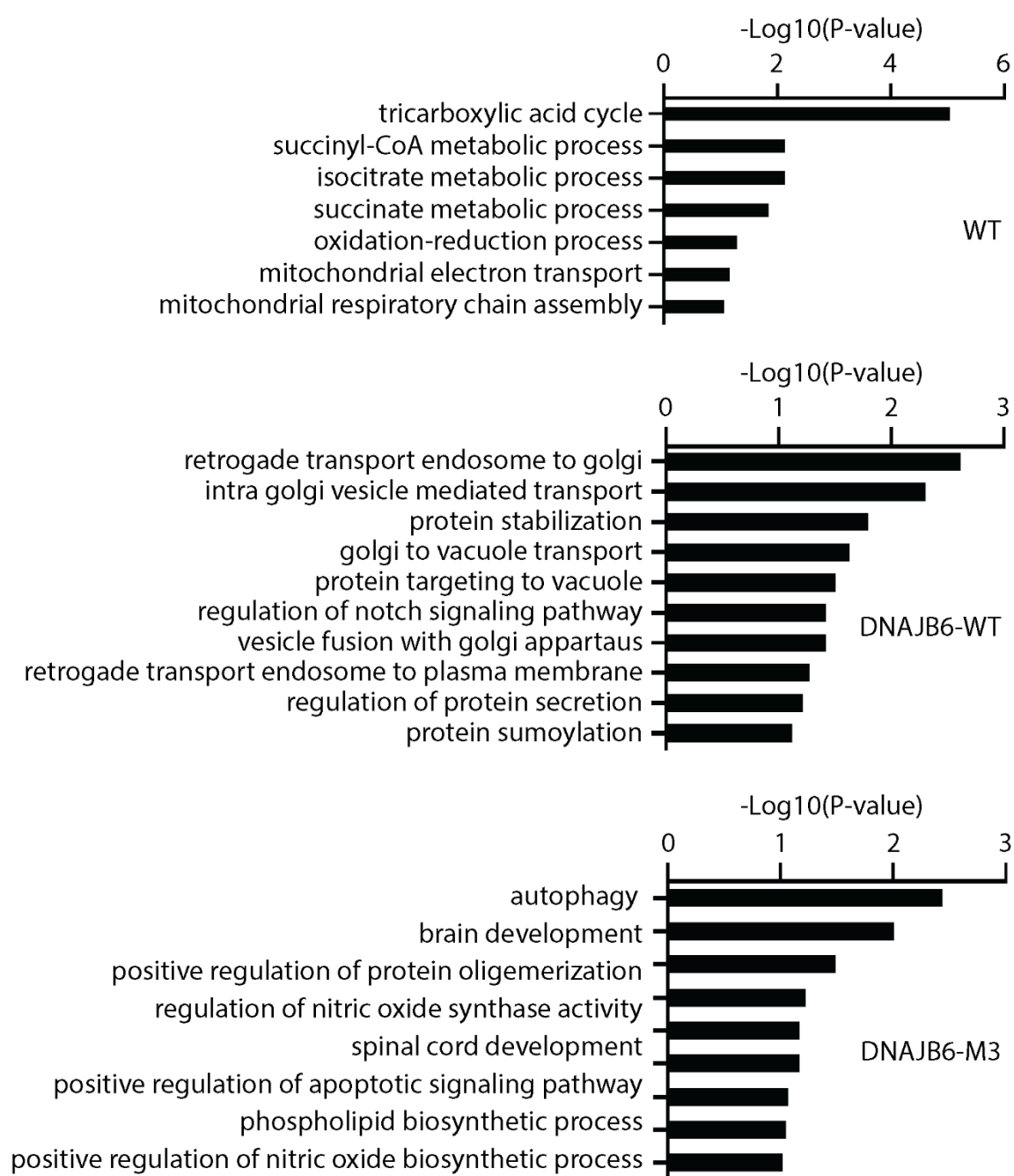
\* Correspondence: i.zuhorn@umcg.nl

SignalP-5.0 prediction (Eukarya): sp\_O75190-3\_DNJB6\_HUMAN



Protein type	Signal Peptide (Sec/SPI)	Other
Likelihood	0.0009	0.9991

**Figure S1.** DNAJB6 does not contain putative secretion signal peptide. (A) Secretion signal peptide prediction using SignalP5.0 for Human DNAJB6 protein (Uniprot ID: O75190). SP: Signal peptide, CS: Cleavage Site.



**Figure S2.** Top 10 GO biological processes enriched for proteins exclusively present in WT, DNAJB6WT and DNAJB6-M3 EV.

---

**Table S1.** Total proteins present in WT, DNAJB6WT and DNAJB6-M3 Evs.

[https://docs.google.com/spreadsheets/d/1uKpiwEXgnSYelxAt7qAnI3HDb\\_x8YG9VnGz8TXJ4O6E/edit?usp=sharing](https://docs.google.com/spreadsheets/d/1uKpiwEXgnSYelxAt7qAnI3HDb_x8YG9VnGz8TXJ4O6E/edit?usp=sharing)

**Table S2.** Proteins overlapping with ExoCarta database.

[https://docs.google.com/spreadsheets/d/1PZCFG5xoF8b3GE6a\\_F8VFZN\\_fAEEGiE60ocl\\_m68YEM/edit?usp=sharing](https://docs.google.com/spreadsheets/d/1PZCFG5xoF8b3GE6a_F8VFZN_fAEEGiE60ocl_m68YEM/edit?usp=sharing)

**Table S3.** Proteins overlapping in WT, DNAJB6WT and DNAJB6-M3 EVs.

<https://docs.google.com/spreadsheets/d/1aIPQ29H5BEMNSCofb0edjddLdv3nMWevRVd1z8jMPsI/edit?usp=sharing>

**Table S4.** Proteins differentially expressed in comparisons between WT and DNAJB6-WT EVs, WT and DNAJB6-M3 EVs, DNAJB6-WT and DNAJB6-M3 EVs.

<https://docs.google.com/spreadsheets/d/1QH2bUDGLb8dJBdt6MLFpgn8tb8XhfASSymEah1Eikuc/edit?usp=sharing>