

Figure S1. Semi-quantification of epidermal growth factor receptor (EGFR) expression in M3-EGFR, parental M3 and A431 cell lines. EGFR was detected by immunocytochemistry in fixed cells using horseradish peroxidase-conjugated anti-EGFR antibodies (see Materials and Methods section in the main text). One-way analysis of variance (ANOVA) with Tukey's multiple comparisons test was carried out to test for significant differences between the means. Data are presented as means \pm standard error of mean ($n=10-12$); a.u. – arbitrary units.

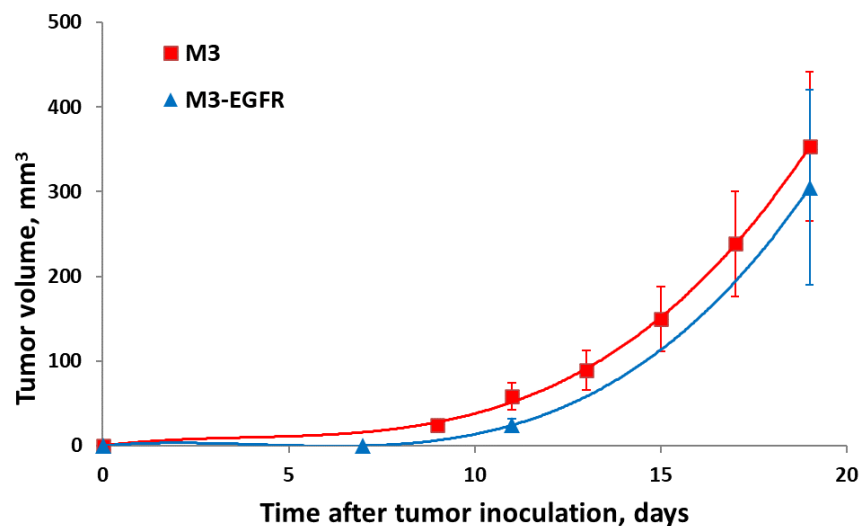


Figure S2. Tumor growth curves of M3-EGFR and parental M3 tumors in DBA/2 mice after subcutaneous inoculation of 2 million cells. Data are presented as means \pm standard error of mean ($n=7-19$)

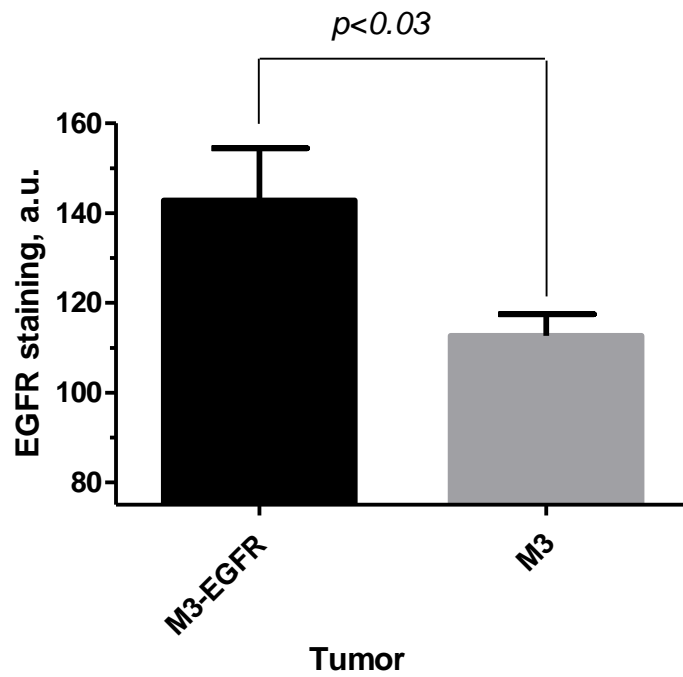


Figure S3. Semi-quantification of epidermal growth factor receptor (EGFR) expression in M3-EGFR and parental M3 tumors. EGFR was detected by immunohistochemistry in fixed tissue sections using horseradish peroxidase-conjugated anti-EGFR antibodies (see Materials and Methods section in the main text). Student t-test was carried out to test for significant differences between the means. Data are presented as means \pm standard error of mean ($n=10$); a.u. – arbitrary units.