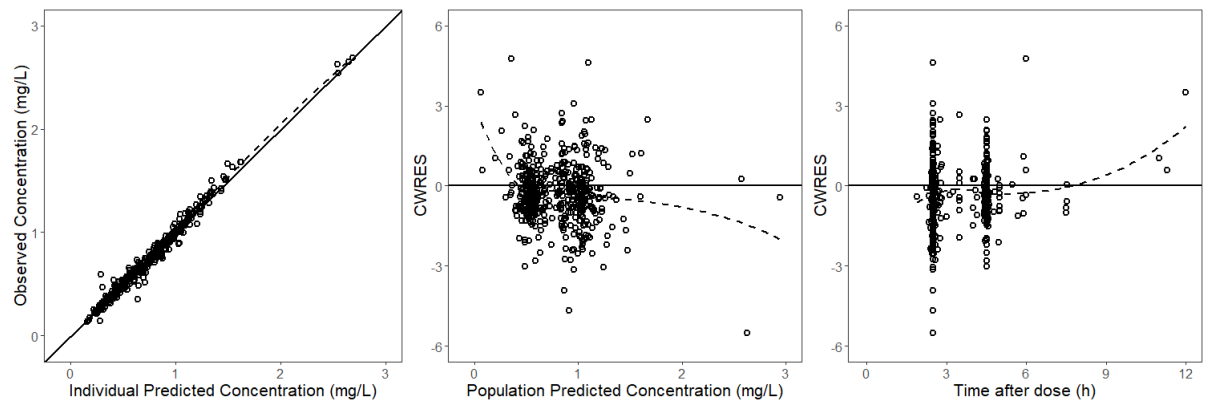
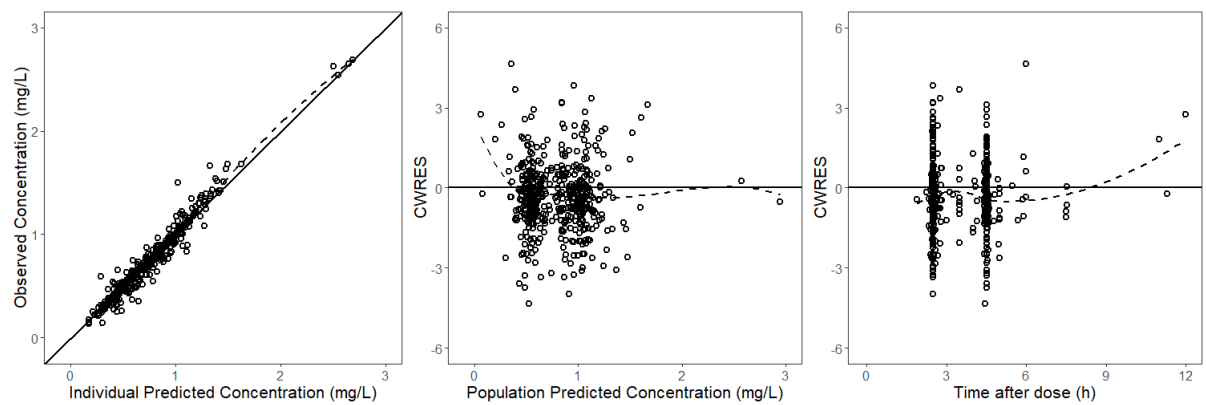


Paci *et al.* [16]

Model with IOV

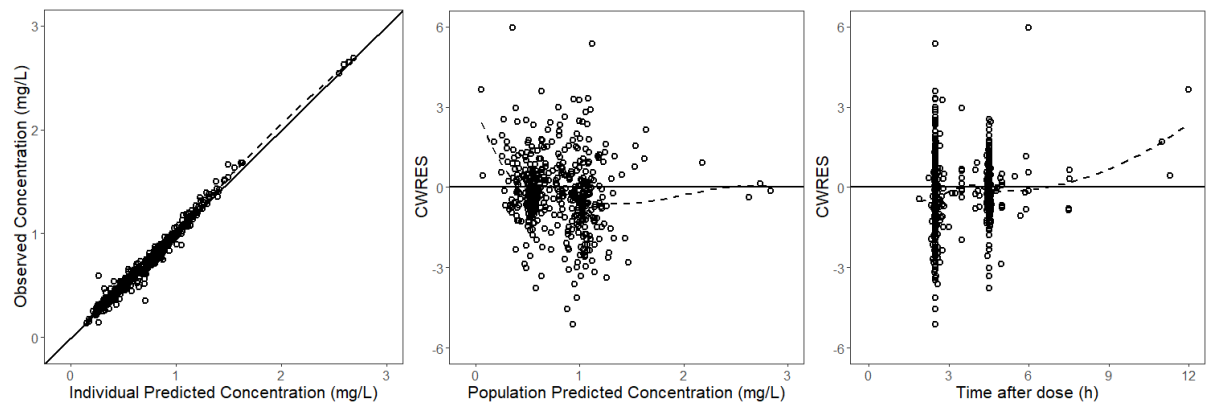


Model without IOV

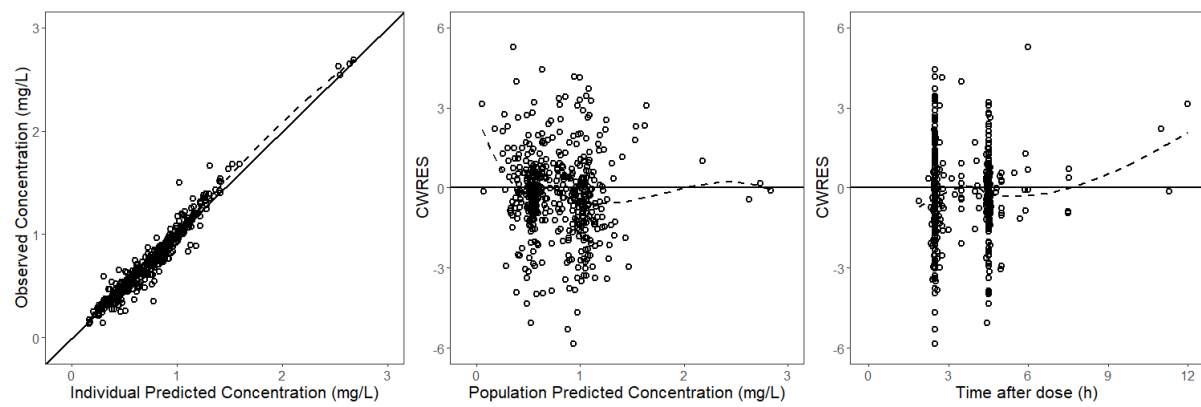


Booth *et al.* [18]

Model with IOV

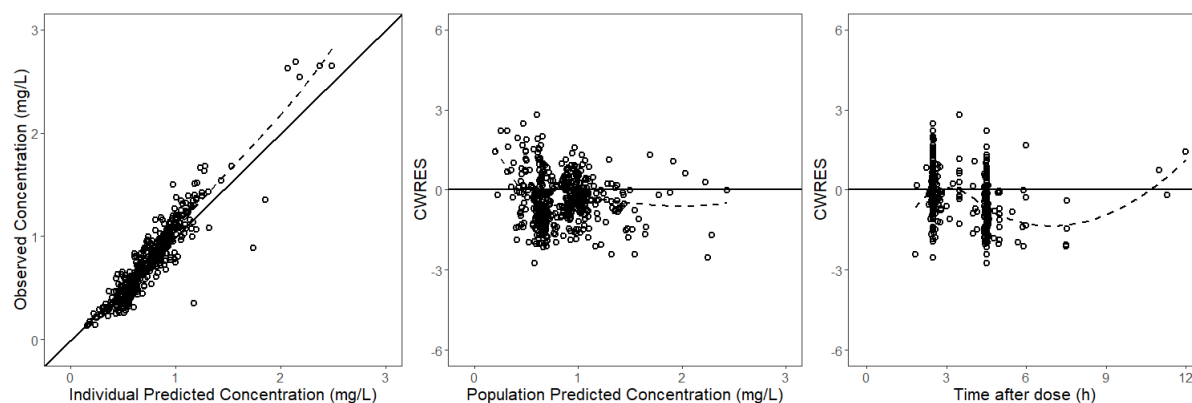


Model without IOV



Trame *et al.* [19]

Model with IOV



Model without IOV

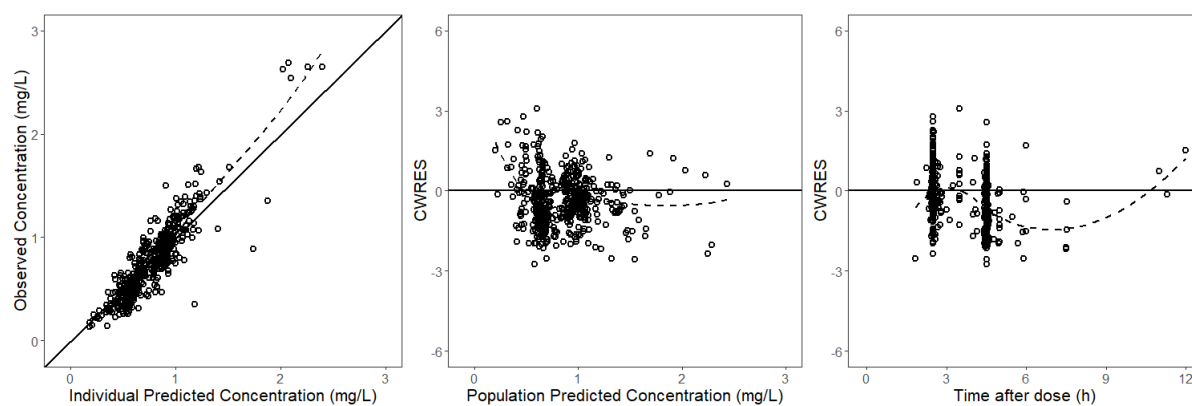


Figure S1: Goodness-of-fit plots of the candidate popPK models with (upper panel) and without (lower panel) interoccasion variability (IOV). Black continuous lines represent identity and ordinate value zero curves as appropriate, dashed lines the loess smooth curves. CWRES, conditional weighted residuals.