

mPEG-PLGA Nanoparticles Labelled with Loaded or Conjugated Rhodamine-B for Potential Nose-to-Brain Delivery

Emanuela Fabiola Craparo, Teresa Musumeci, Angela Bonaccorso, Rosalia Pellitteri, Alessia Romeo, Irina Naletova, Lorena Maria Cucci, Gennara Cavallaro and Cristina Satriano

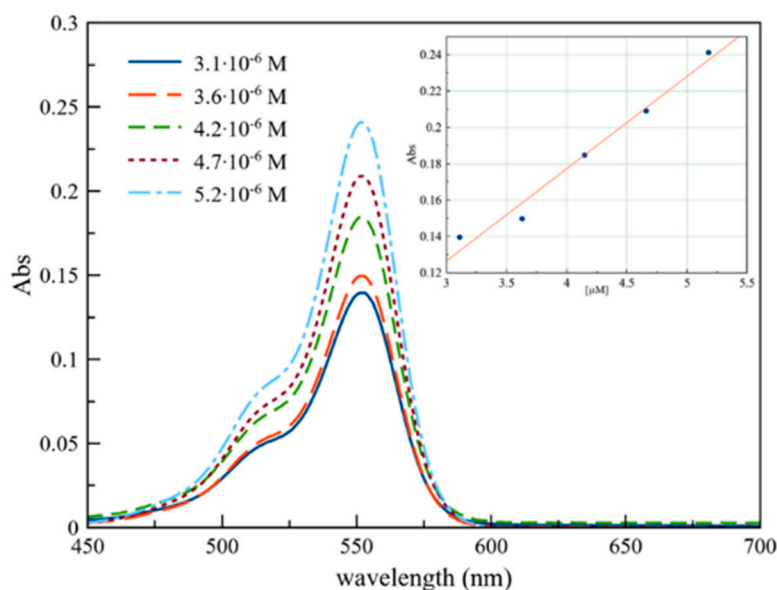


Figure S1. UV-vis calibration curve for RhB in Milli-Q water determined at the wavelength of the maximum of absorbance ($\lambda = 552$ nm).

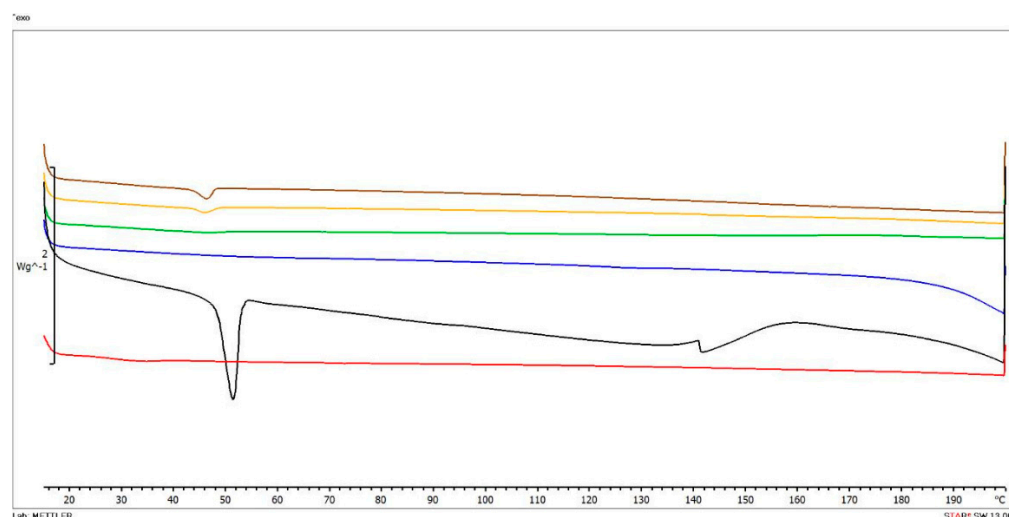


Figure S2. DSC thermograms of PLGA-PEG (red curve), PHEA-*g*-RhB-*g*-PLA (black curve), RhB (blue curve) as raw materials, unlabeled PNPs (green curve), loaded-PNPs (yellow curve) and grafted-PNPs (brown curve).