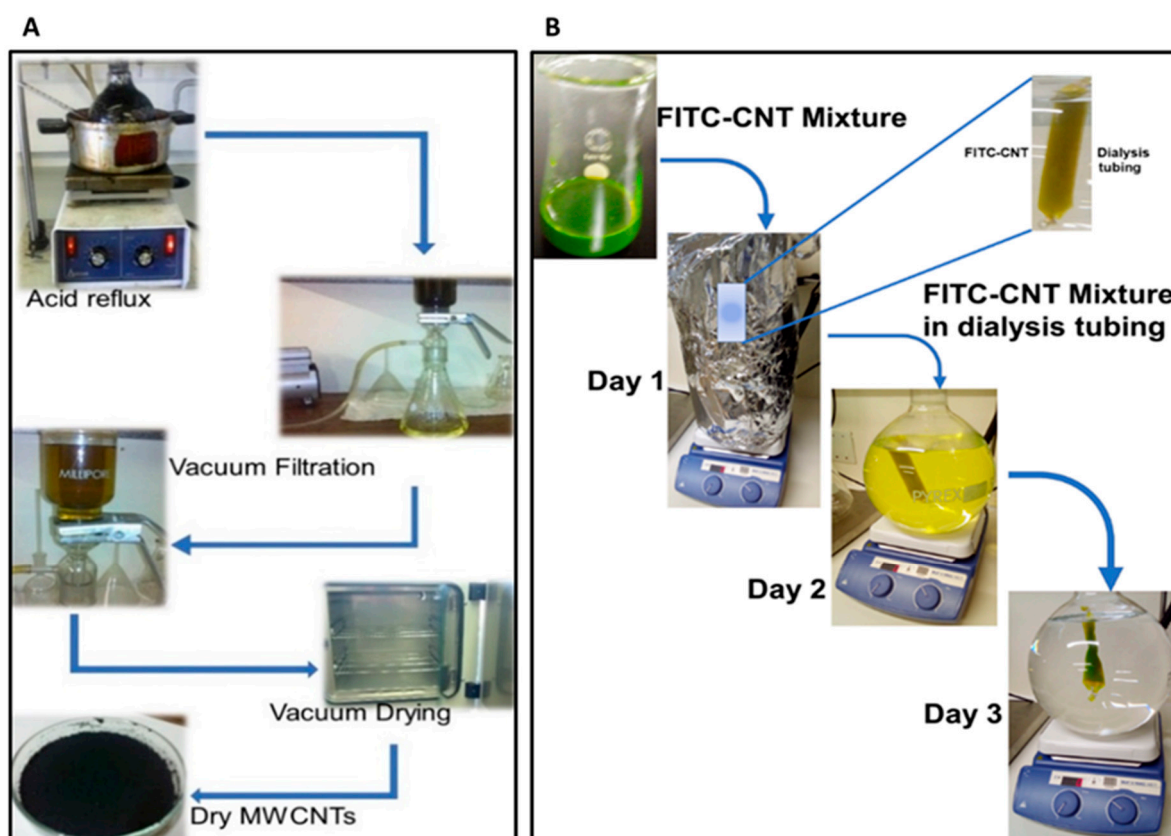
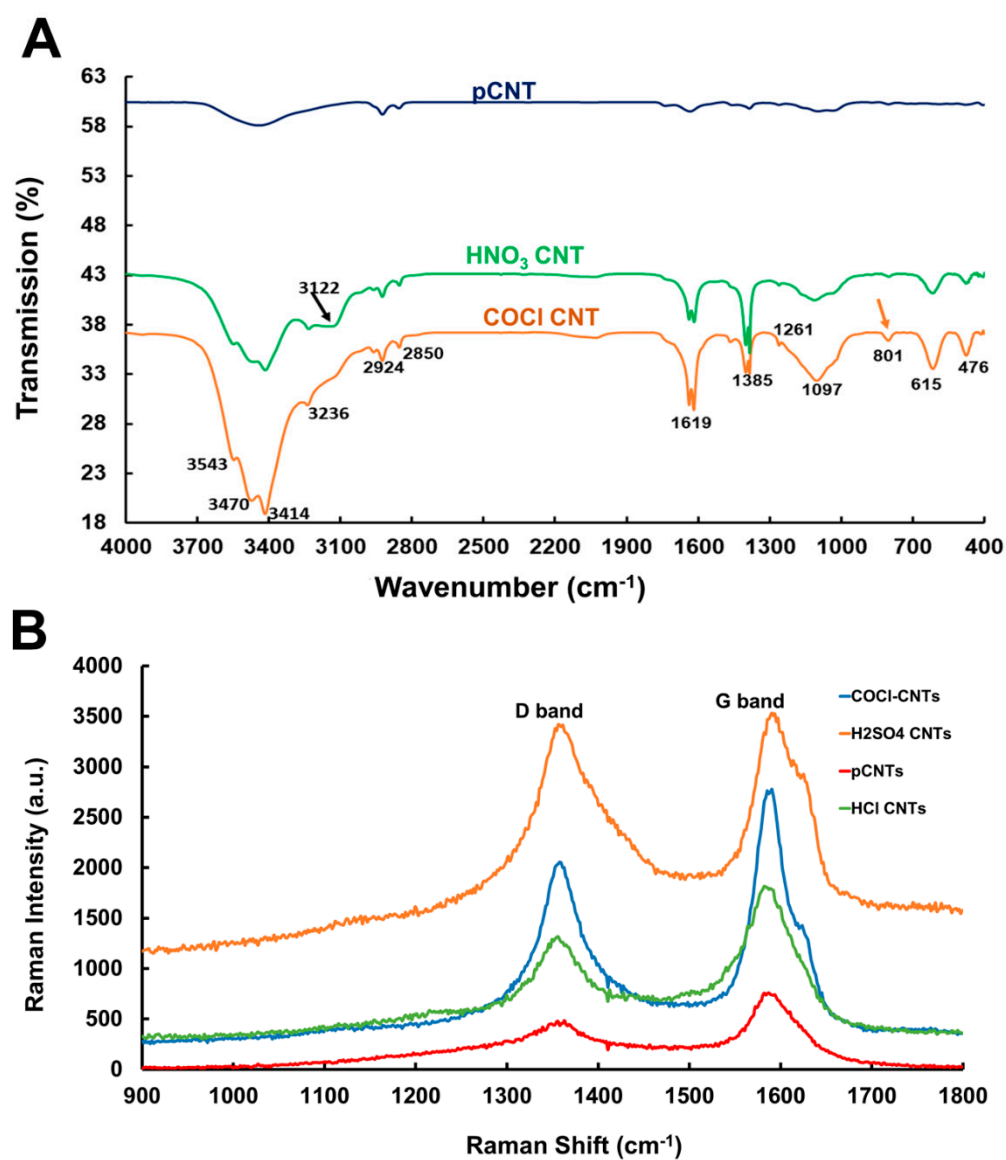


# Supplementary Materials: Atrial Natriuretic Peptide Antibody-Functionalised, PEGylated Multiwalled Carbon Nanotubes for Targeted Ischemic Stroke Intervention

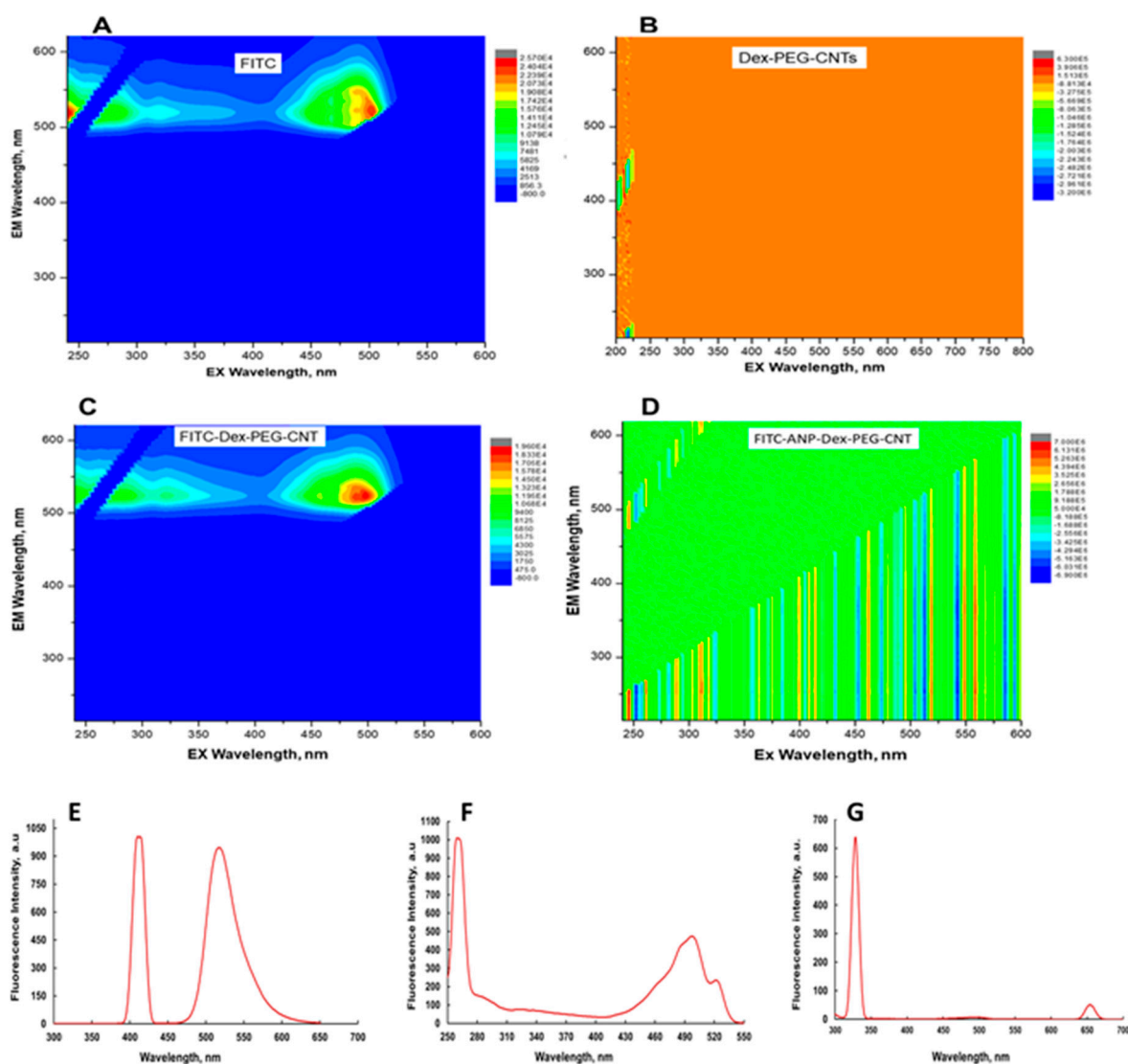
Patrick P. Komane, Pradeep Kumar and Yahya E. Choonara



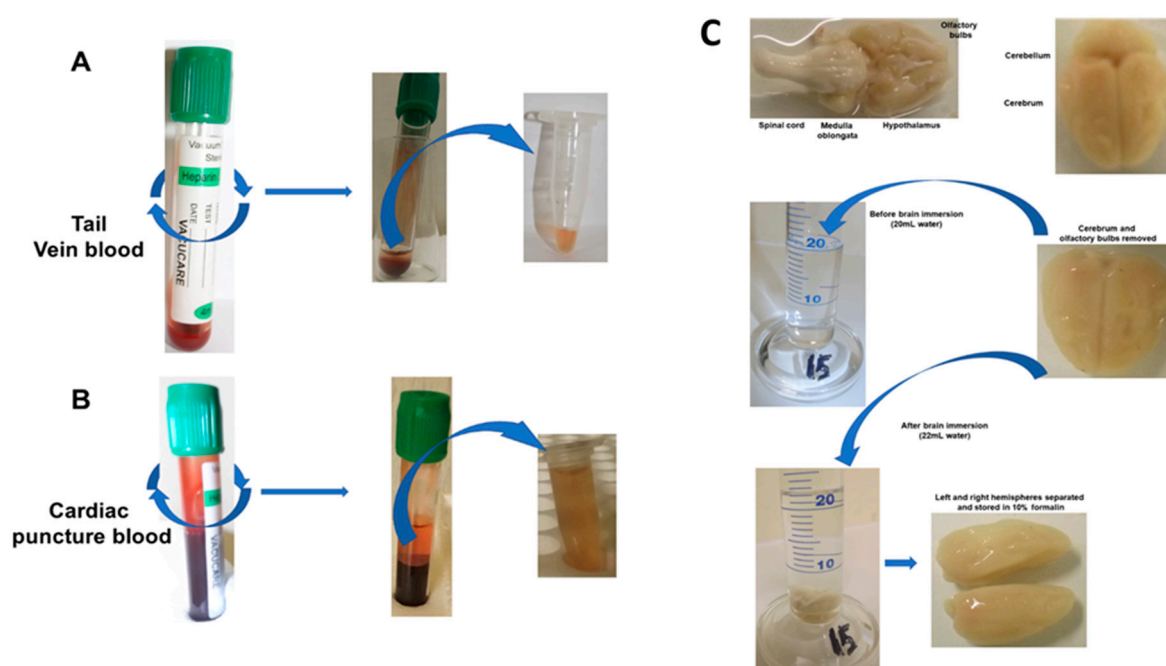
**Figure S1.** Preparation of FITC labelled multiwalled carbon nanotubes. Purification by acid reflux (A). FITC labelling of PEG-MWCNTs (B).



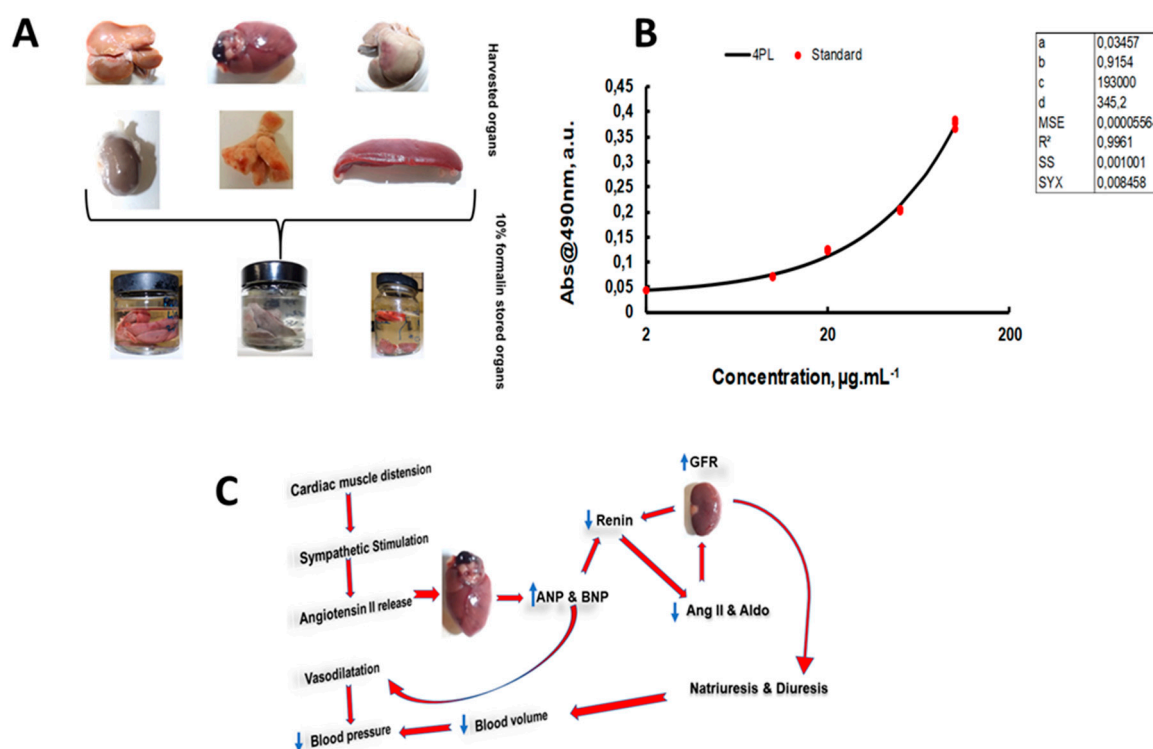
**Figure S2.** Spectra of the multiwalled carbon nanotubes. KBr-FITR Spectra of the functionalised multiwalled carbon nanotubes (A). Raman Spectra of the functionalised multiwalled carbon nanotubes (B).



**Figure S3.** Contour maps and fluorescence intensities of the FITC labelled multiwalled carbon nanotubes. FITC (A), DEX-PEG-CNTs (B), FITC-Dex-PEG-CNTs (C), FITC-Dex-PEG-ANP-CNTs (D), Fluorescence intensities of the functionalised carbon nanotubes (E–G).



**Figure S4.** Preparation of the plasma and brain hemispheres samples. Plasma separation from the tail venous blood (A) and cardiac puncture blood (B). Preparation of brain hemispheres (C).



**Figure S5.** Preparation of organs and measurement of ANP levels. Organ isolation and preservation (A). Absorbance measurement of ANP (B). Natriuretic peptide mechanism of action (C).