

Supplementary Material: The Bone Regeneration Capacity of BMP-2 + MMP-10 Loaded Scaffolds Depends on the Tissue Status

Patricia Garcia-Garcia, Ricardo Reyes, José Antonio Rodríguez, Tomas Martín , Carmen Evora , Patricia Díaz-Rodríguez and Araceli Delgado

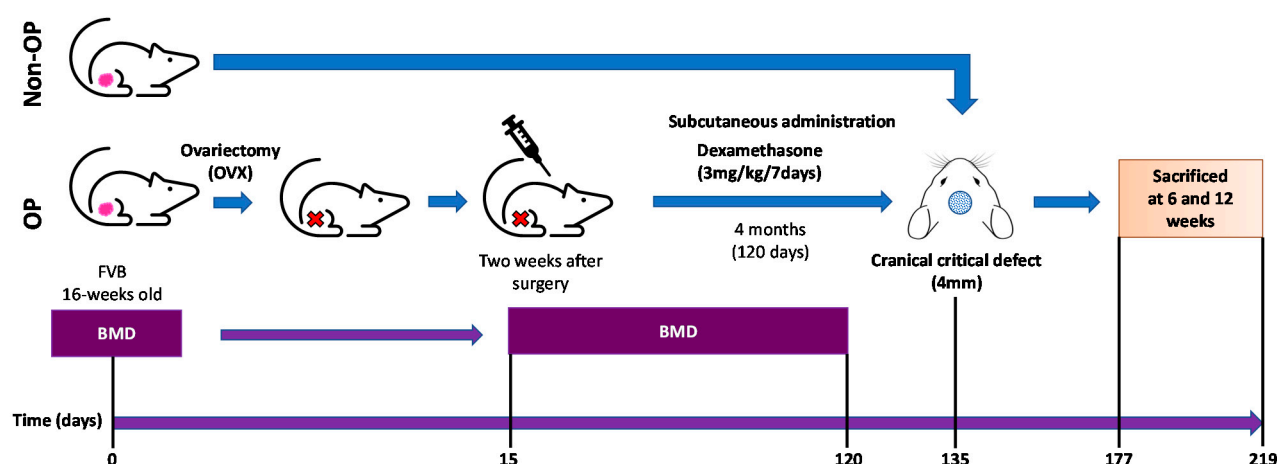


Figure S1. - *In vivo* experiments timeline for osteoporotic model evaluation by bone mineral density (BMD) measurements and the assessment of scaffold performance.

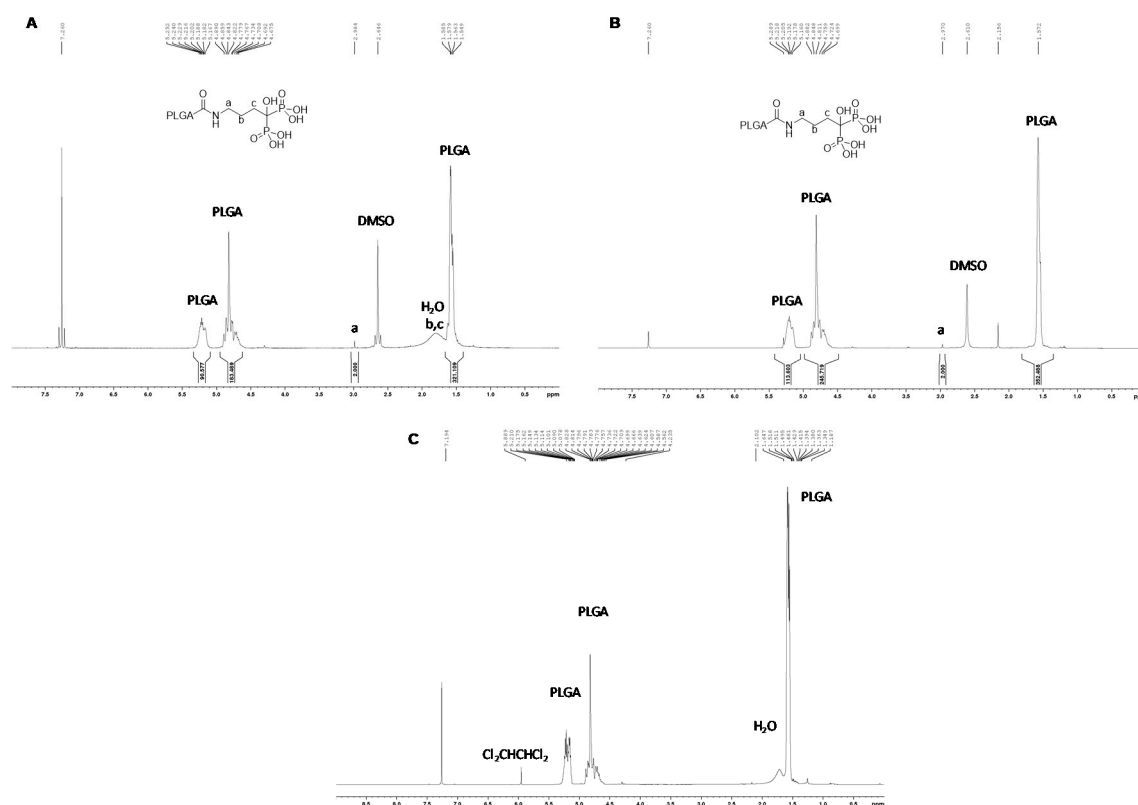


Figure S2. - ¹H-NMR spectrum of A) PLGA-ALD from Resomer® RG 502 H; B) PLGA-ALD from Resomer® RG 504 H and C) Electrospun meshes soaked 72 hours in water (Cl₂CHCHCl₂ was used as internal standard). The signal at 7.26 ppm corresponds to the signal from the solvent CHCl₃.

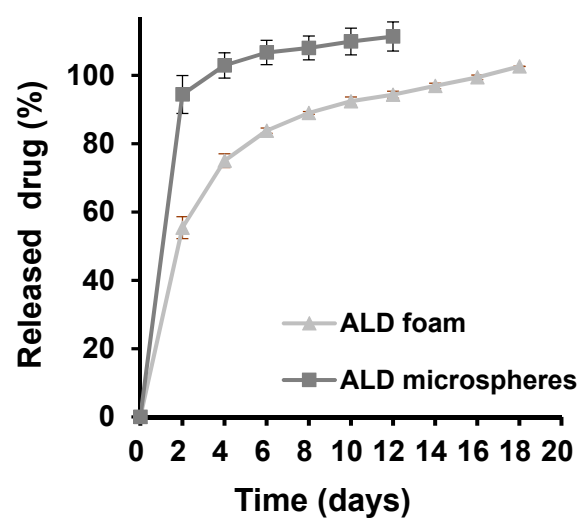


Figure S3. - In vitro drug release profiles of ALD from microsphere-loaded chitosan foams (ALD foam) and plain microspheres (ALD microspheres).