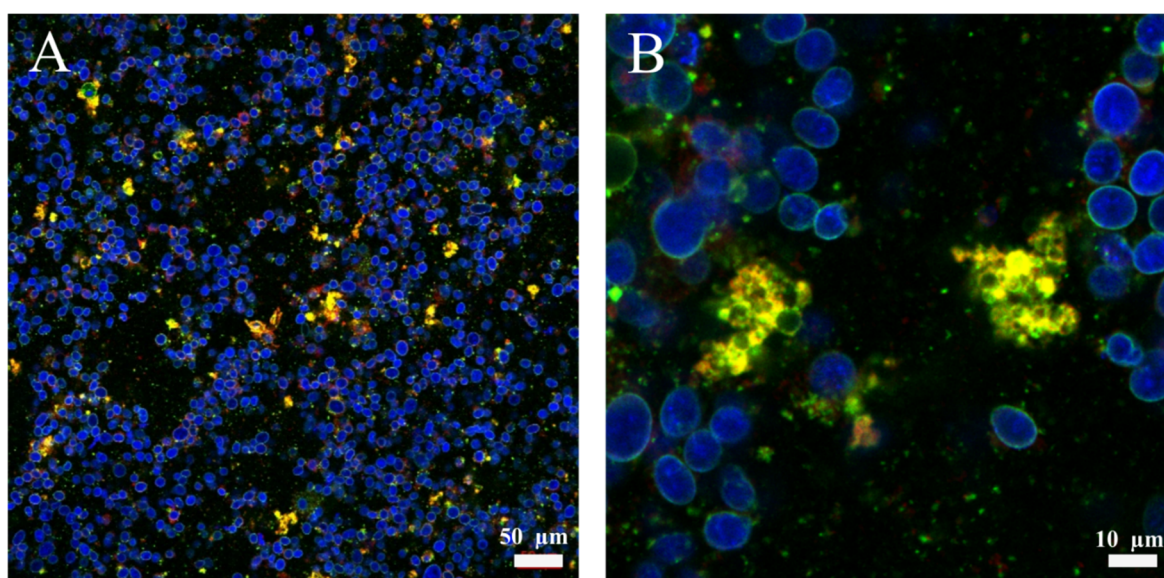


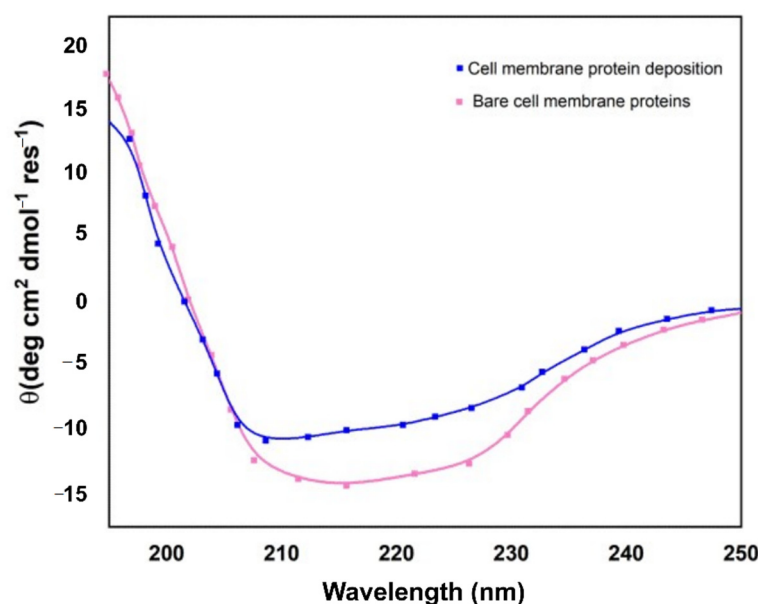
# Supplementary Materials: Cell Membrane-Coated Oil in Water Nano-Emulsions As Biomimetic Nanocarriers for Lipophilic Compounds Conveyance

Martina Profeta, Concetta Di Natale, Elena Lagreca, Valentina Mollo, Paolo Antonio Netti and Raffaele Vecchione

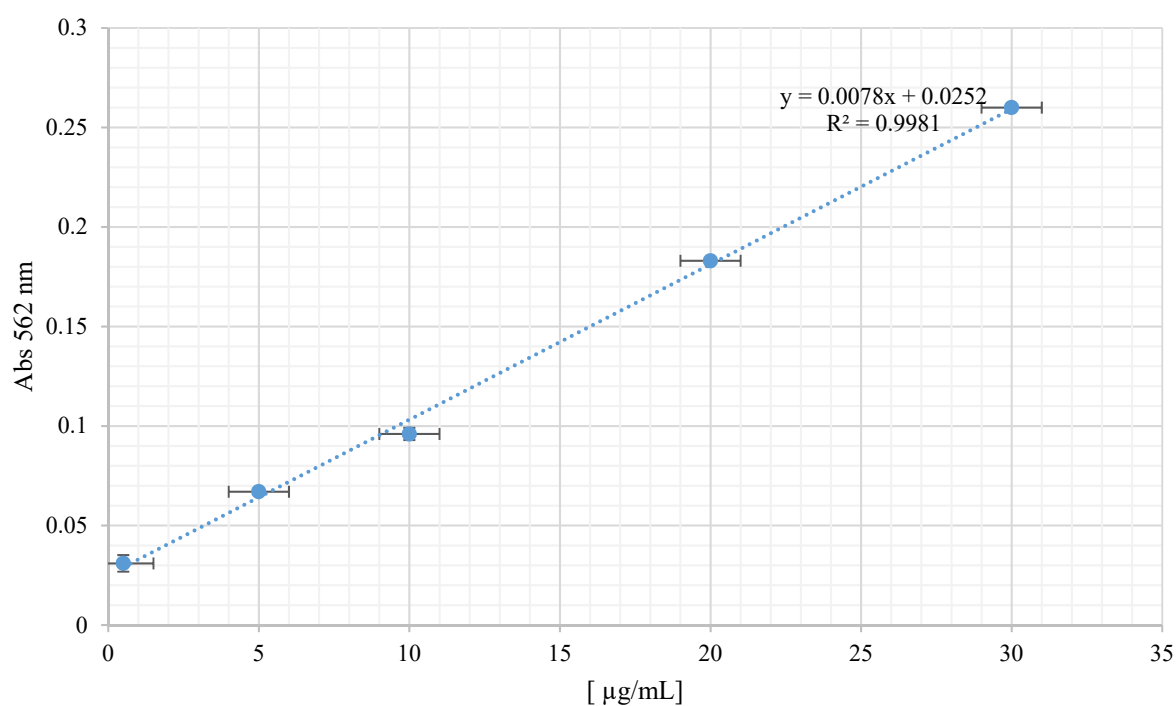
## Supplementary information



**Figure S1.** Cell nuclei (blue) contained in the first pellet of the purification process. Figure (B) is a zoom in of Figure (A).



**Figure S2.** Overlay of CD spectra of: pink) bare membrane after extraction and purification processes (371.1 μg) and blue) cell membrane proteins deposited on Ct-NE (150 μg).



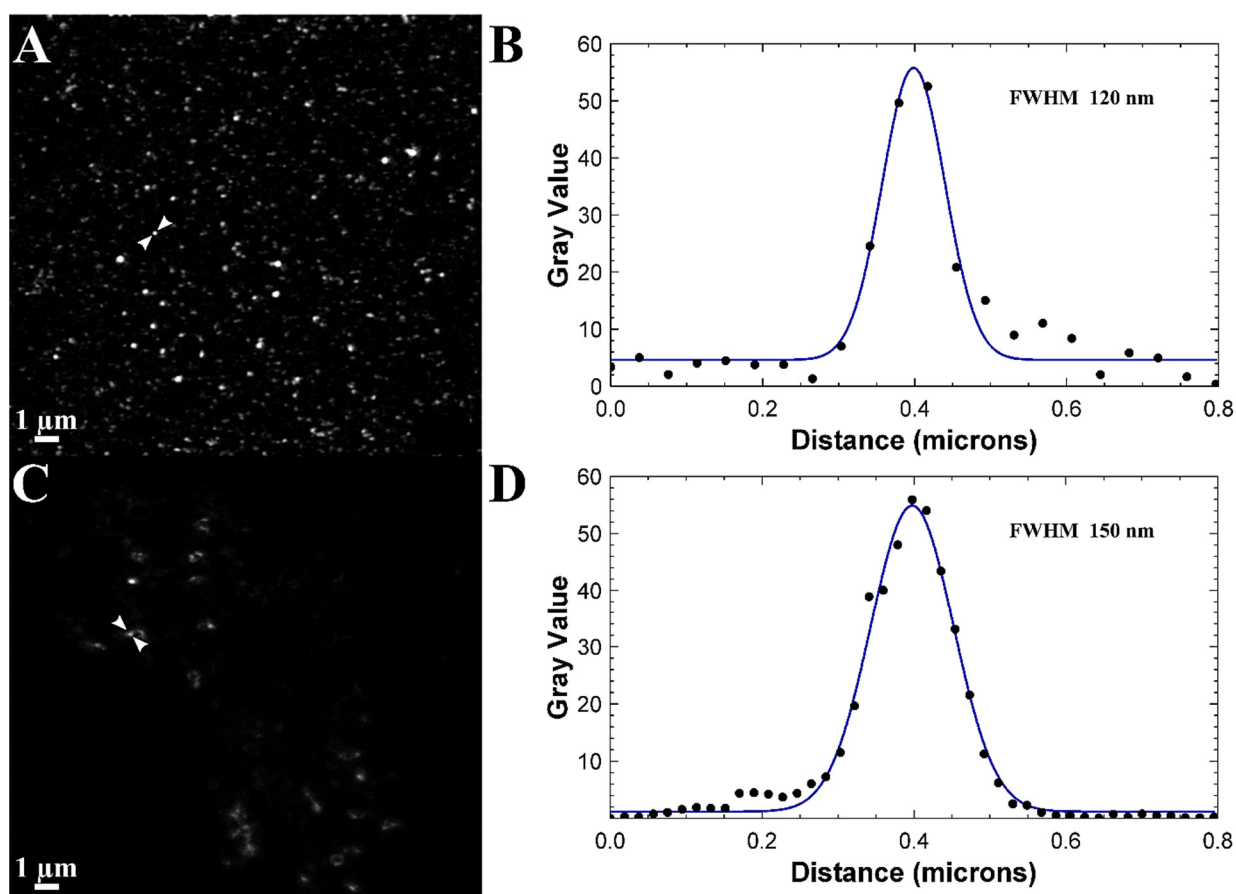
**Figure S3.** Cell membrane quantification by BCA assay. Titration curve.

**Table S1.** Size, PDI and  $\zeta$ -potential data of Ct-NEs and CM-NEsoSome.

Samples	Size /d. nm	PDI	$\zeta$ -potential / mV
Ct-NEs	$96.0 \pm 0.1$	$0.119 \pm 0.02$	$+38.0 \pm 1.2$
CM-NEsoSome	$105.9 \pm 0.66$	$0.088 \pm 0.013$	$+31.8 \pm 0.88$

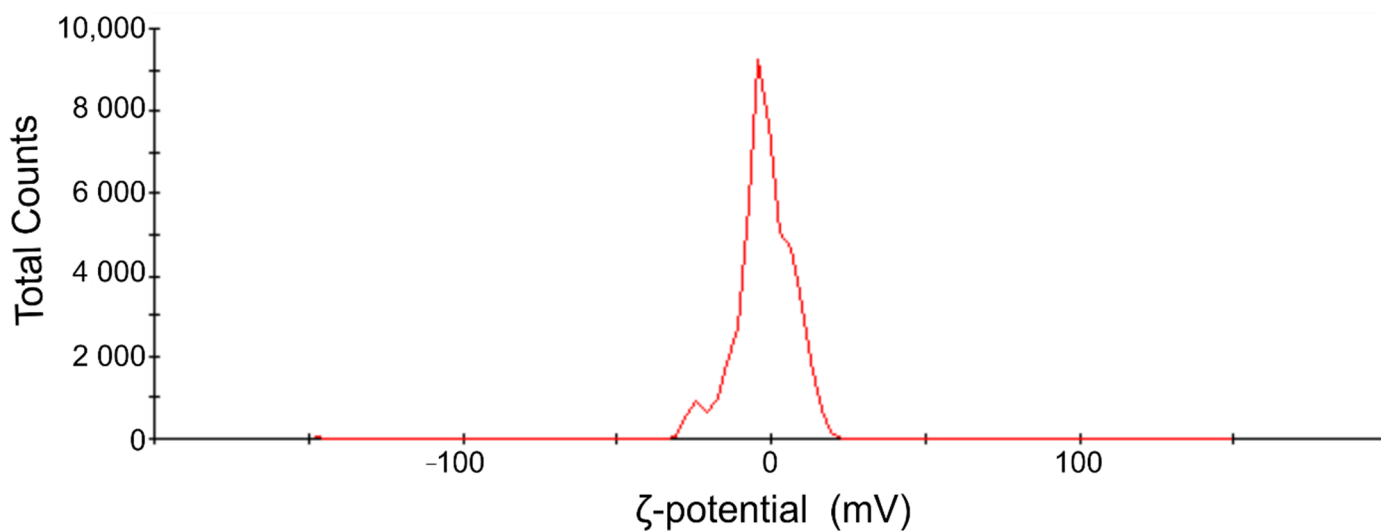
**Table S2.** Size and PDI of CM-NEsoSome over time obtained by DLS analysis. Data are expressed as mean  $\pm$  SD ( $n=3$ ).

Time / days	Size /d. nm	PdI
0	$105.9 \pm 0.66$	$0.088 \pm 0.013$
1	$108.0 \pm 4.71$	$0.086 \pm 0.02$
7	$105.5 \pm 0.089$	$0.089 \pm 0.010$
15	$100.8 \pm 0.55$	$0.082 \pm 0.09$
30	$119.8 \pm 1.02$	$0.118 \pm 0.017$



**Figure S4.** STED analysis of Ct-NE (A,B) and CM-NEsoSome (C,D). (A,C) STED images, (B,D) Deconvolution spectra analysis by ImageJ® software extracted respectively from images (A,C).

## ζ-potential distribution



**Figure S5.** ζ-potential (mV) distribution of U87-MG cells.