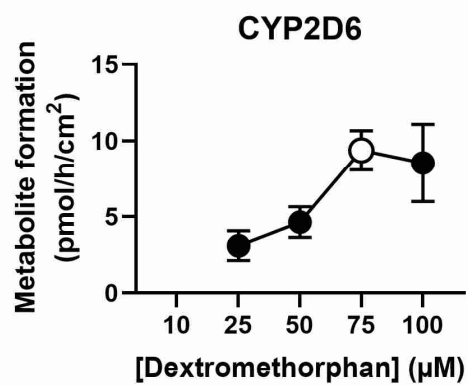
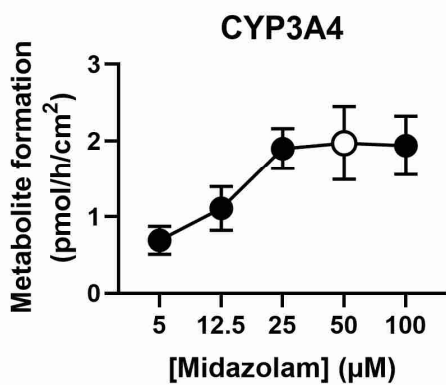
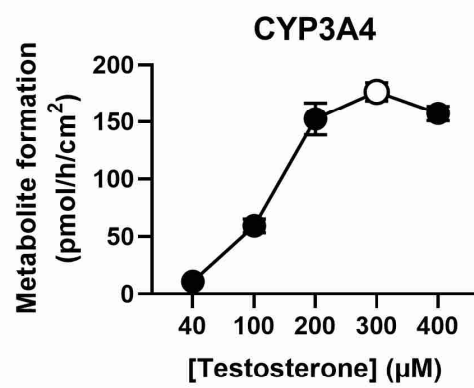
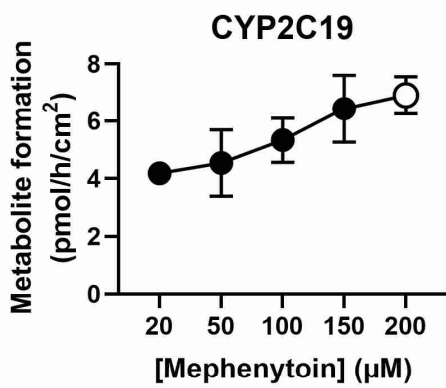
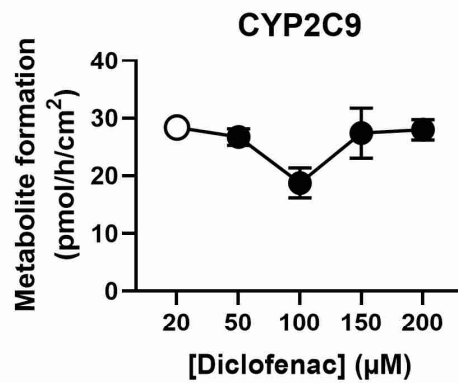
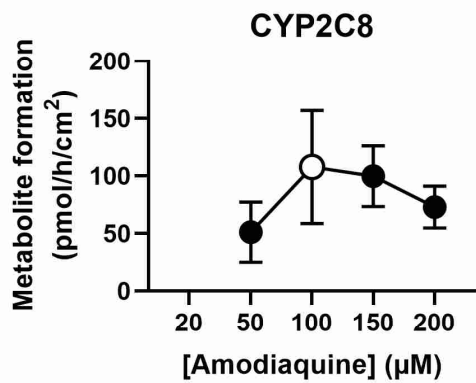
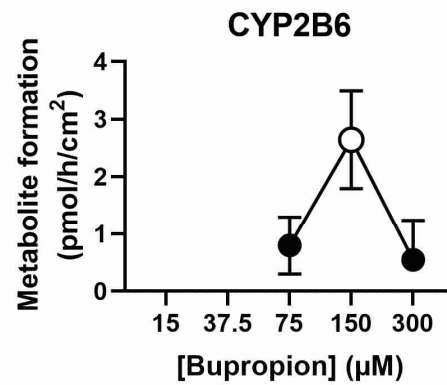
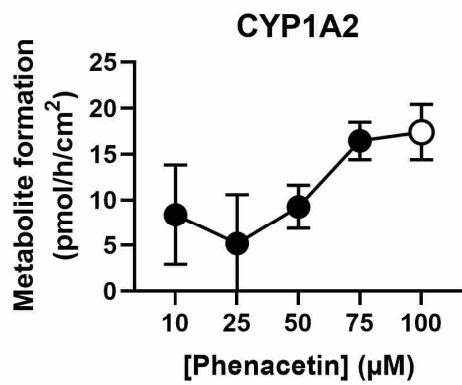
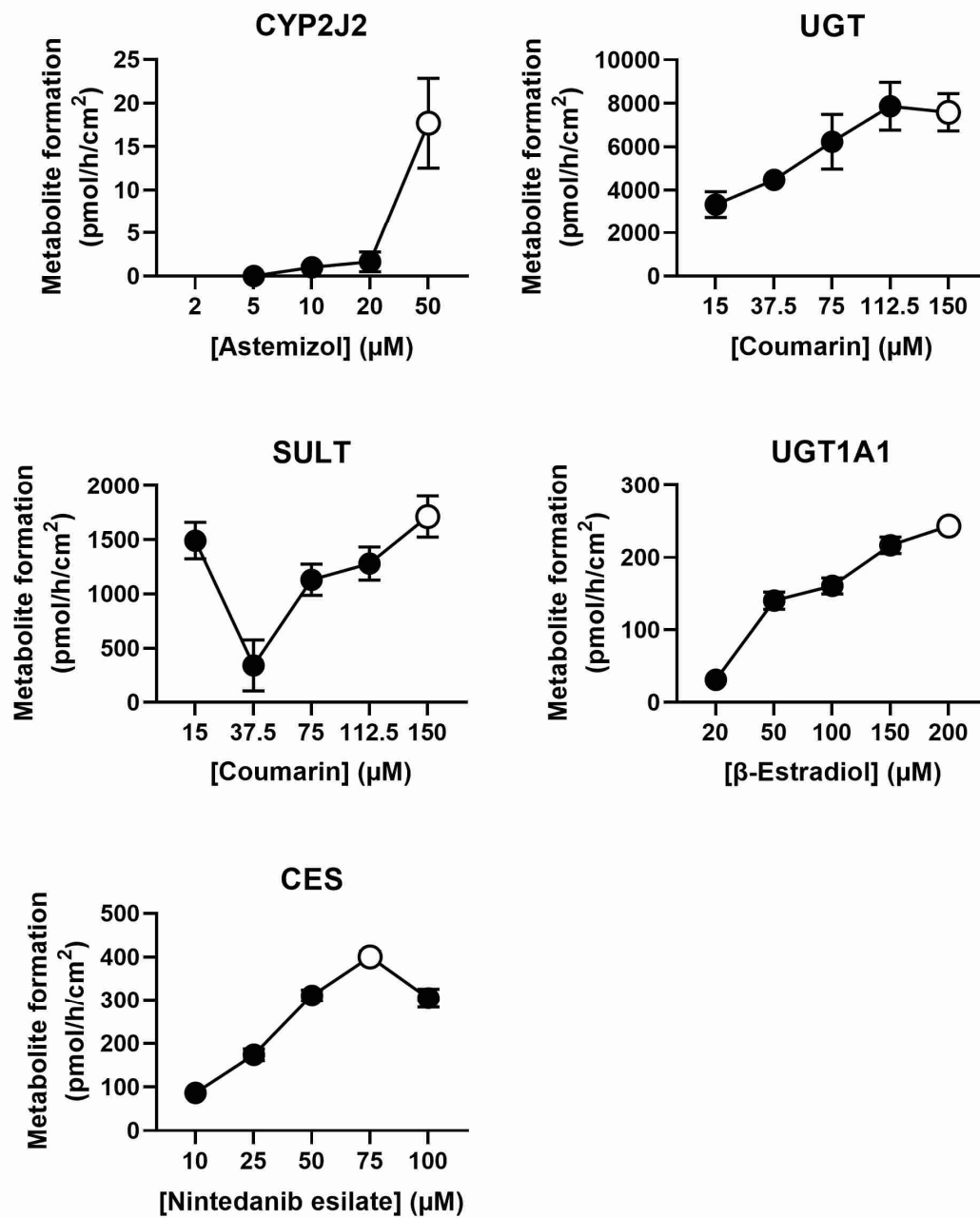




# **Supplementary Materials: In-Depth Characterization of EpiIntestinal Microtissue as a Model for Intestinal Drug Absorption and Metabolism in Human**

Yunhai Cui, Stephanie Claus, David Schnell, Frank Runge and Caroline MacLean





**Figure S1.** The concentration dependence of activities of drug-metabolising enzymes in EpiIntestinal microtissues. Metabolite formation by the respective drugs was measured as described in 2.4. Concentrations which were used for the comparison of the enzyme activities between EpiIntestinal microtissues and Caco-2 cells were marked with empty circles.