

Supplementary Materials: Generation of an hTERT-Immortalized Human Sertoli Cell Model to Study Transporter Dynamics at the Blood-Testis Barrier: Supplementary Materials

Raymond K. Hau, Siennah R. Miller, Stephen H. Wright and Nathan J. Cherrington

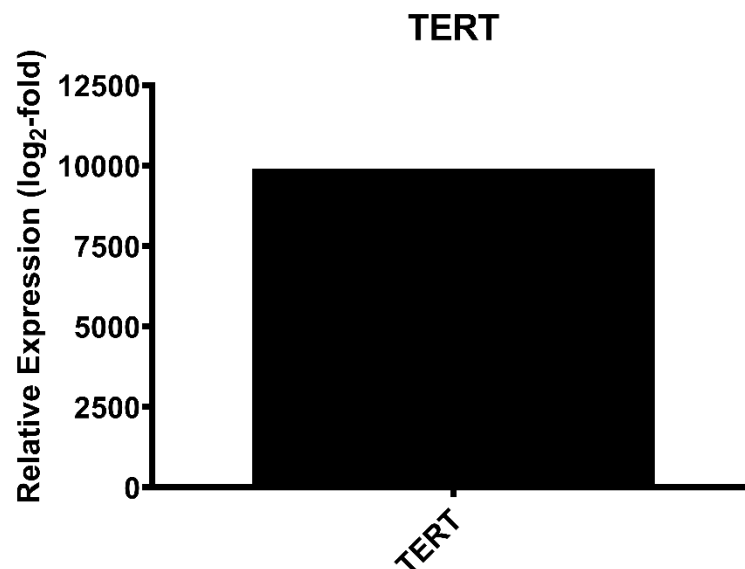


Figure S1. Relative mRNA expression of human TERT assessed by microarray represented as the log₂-fold change.

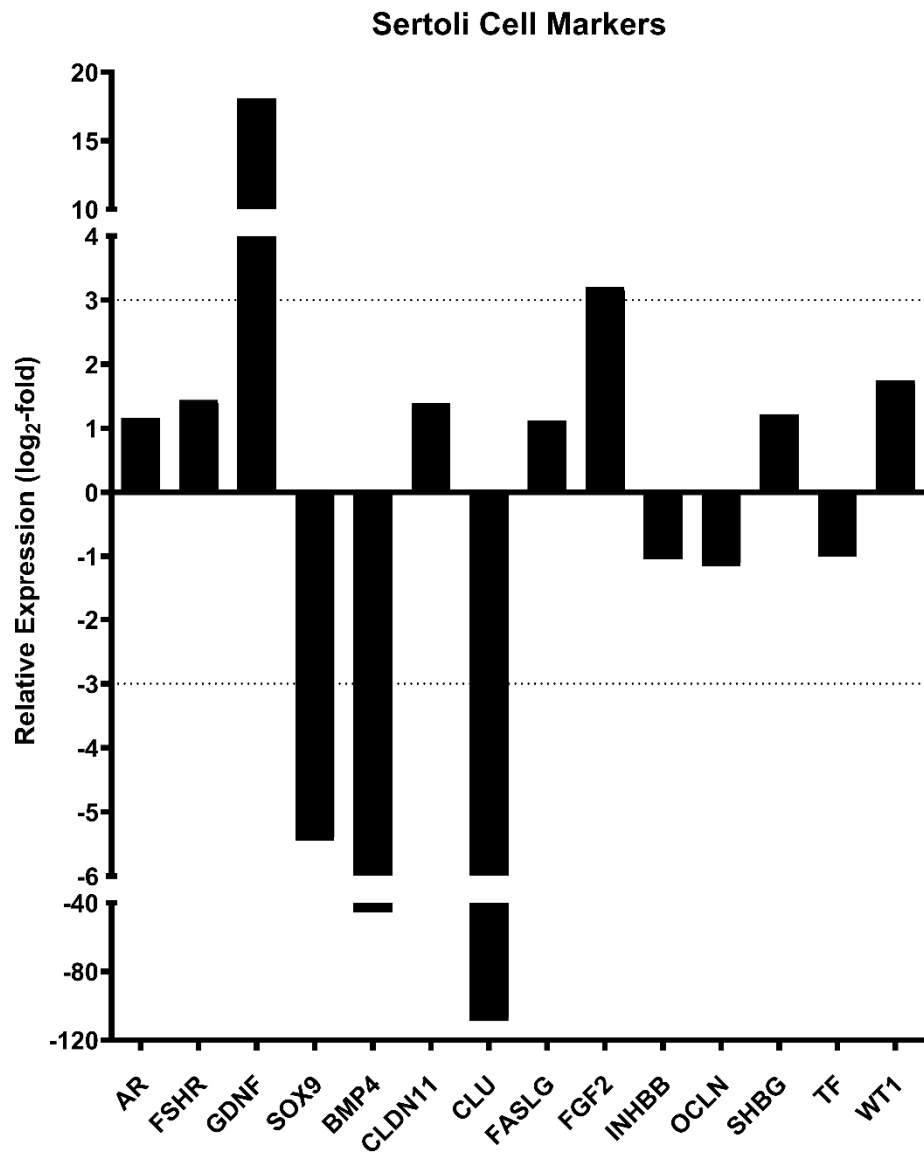


Figure S2. Relative mRNA expression of various human SC marker genes described in Figure 3A assessed by microarray represented as the log₂-fold change.

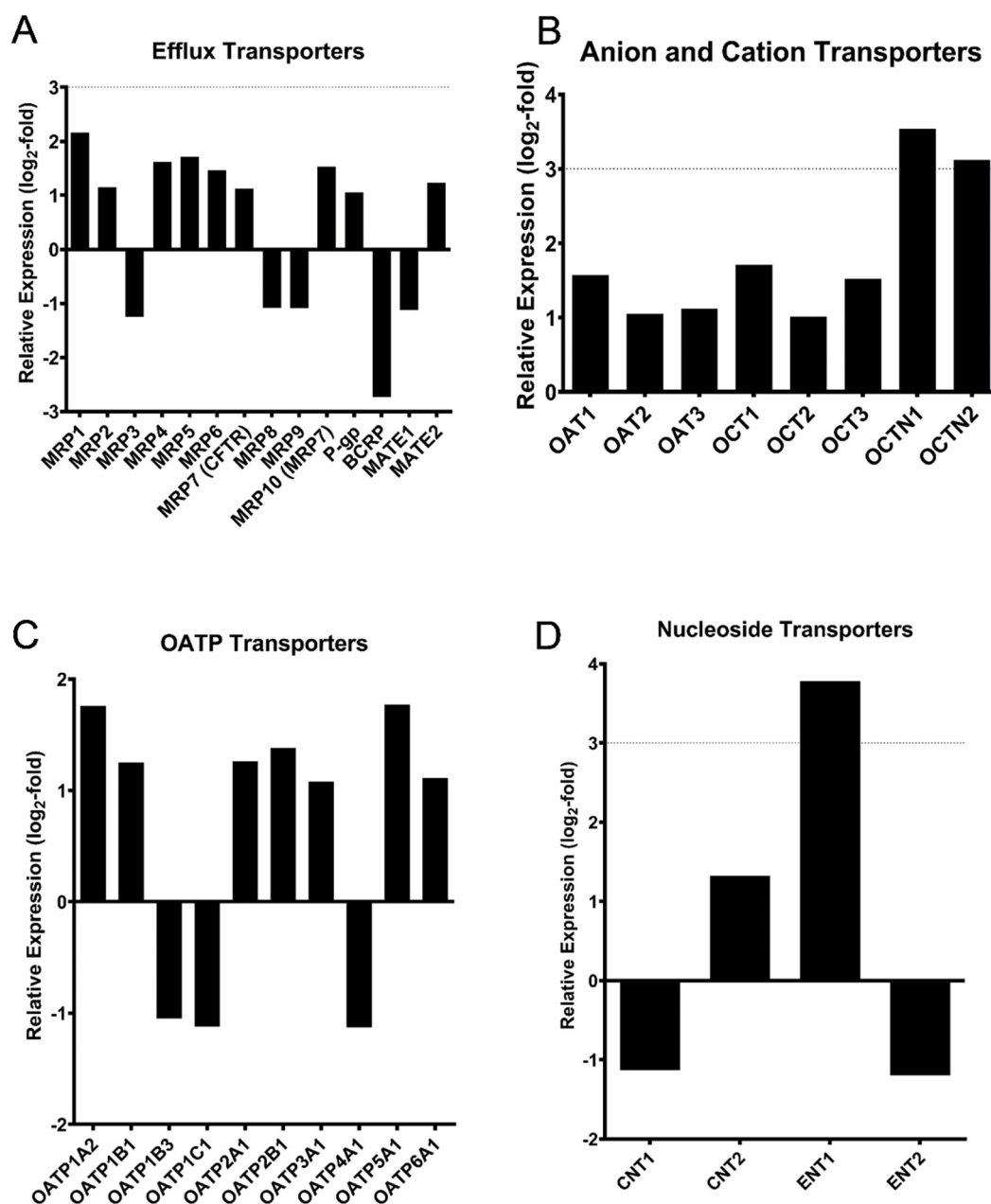


Figure S3. (A) Relative mRNA expression of various human xenobiotic efflux transporter genes assessed by microarray. (B) Relative mRNA expression of human anion and cation transporter genes in the SLC22A family assessed by microarray. (C) Relative mRNA expression of human organic anion transporting polypeptide transporter genes in the SLC21 family assessed by microarray. (D) Relative mRNA expression of human concentrative and equilibrative nucleoside transporters assessed by microarray. All data are represented as the log₂-fold change.