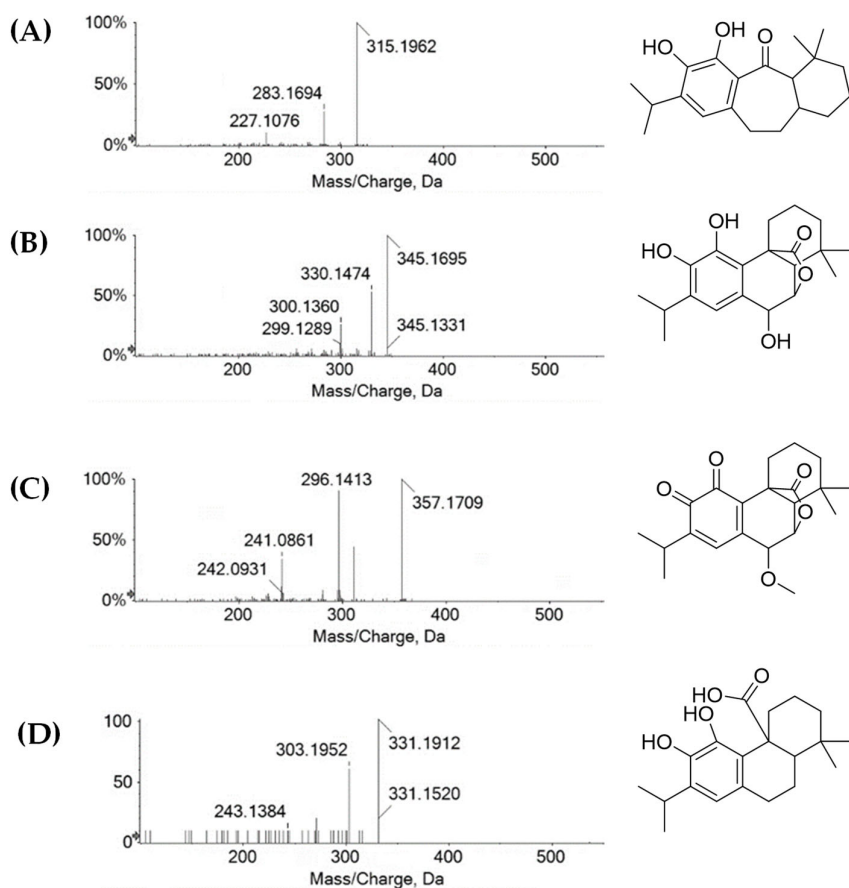


# *Lavandula austroapennina*: Assessment of the Antiviral Activity of Lipophilic Extracts from its Organs

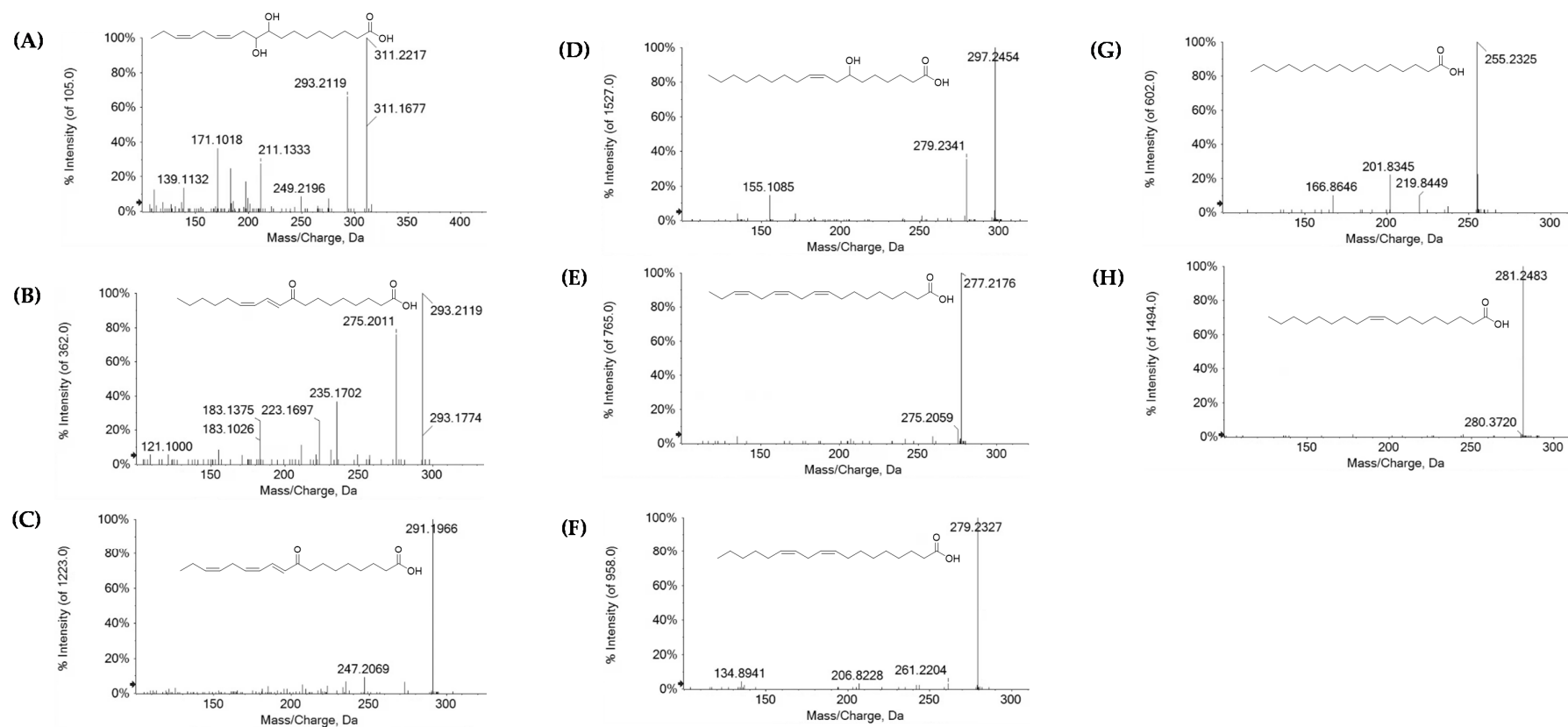
Chianese Annalisa <sup>1</sup>, Claudia Gravina <sup>2</sup>, Mariavittoria Morone <sup>1</sup>, Marialuisa Formato <sup>2</sup>, Annalisa Ambrosino <sup>1</sup>, Rosa Giugliano <sup>1</sup>, Bianca Maria Nastri <sup>1</sup>, Carla Zannella <sup>1</sup>, Assunta Esposito <sup>2</sup>, Anna De Filippis <sup>1</sup>, Simona Piccolella <sup>2</sup>, Massimiliano Galdiero <sup>1,\*</sup>, Severina Pacifico <sup>2,\*</sup>

<sup>1</sup> Department of Experimental Medicine, University of Campania "Luigi Vanvitelli", 80138 Naples, Italy

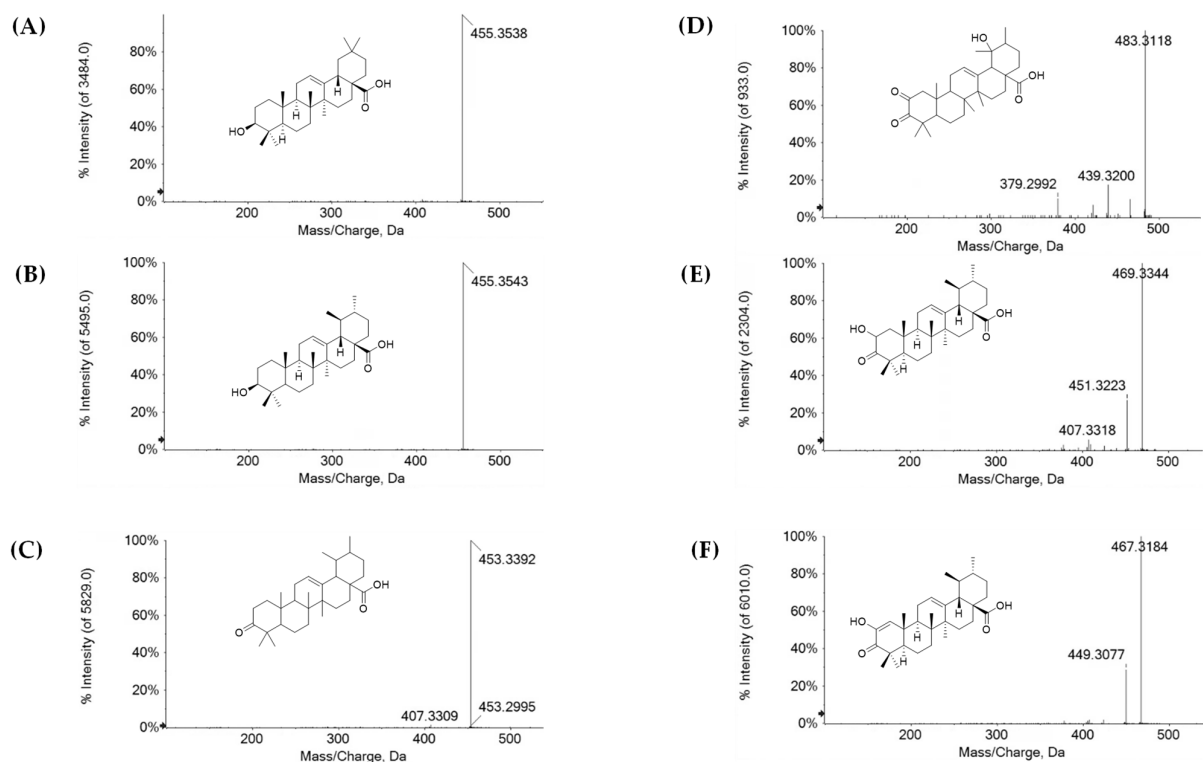
<sup>2</sup> Department of Environmental, Biological and Pharmaceutical Sciences and Technologies, University of Campania "Luigi Vanvitelli", 81100 Caserta, Italy



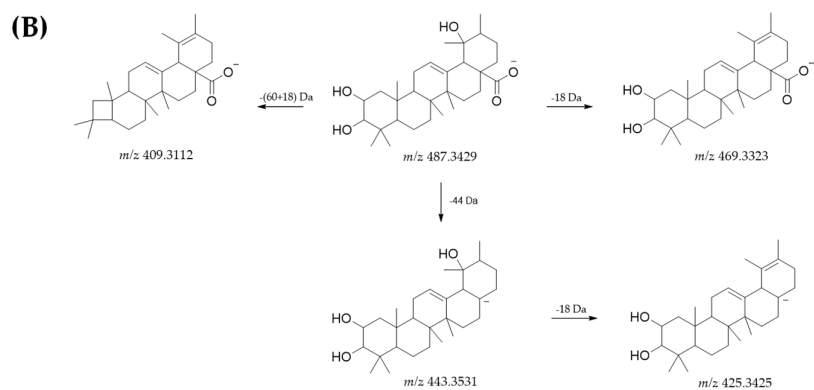
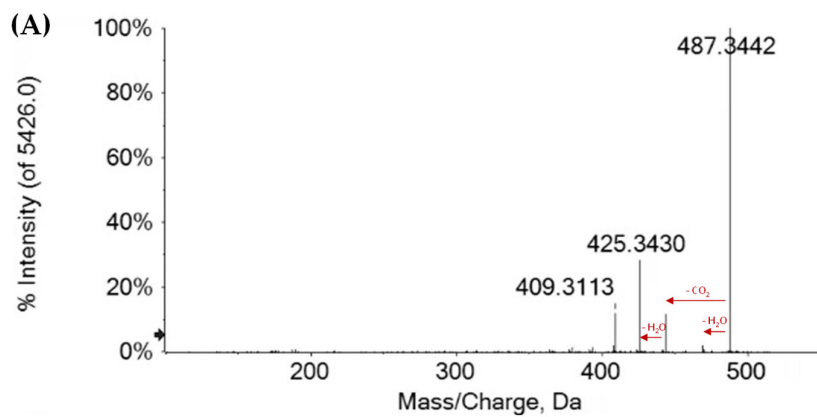
**Figure S1.** TOF-MS/MS spectra and proposed chemical structure of compounds: (A) 1; (B) 2; (C) 5; (D) 7.



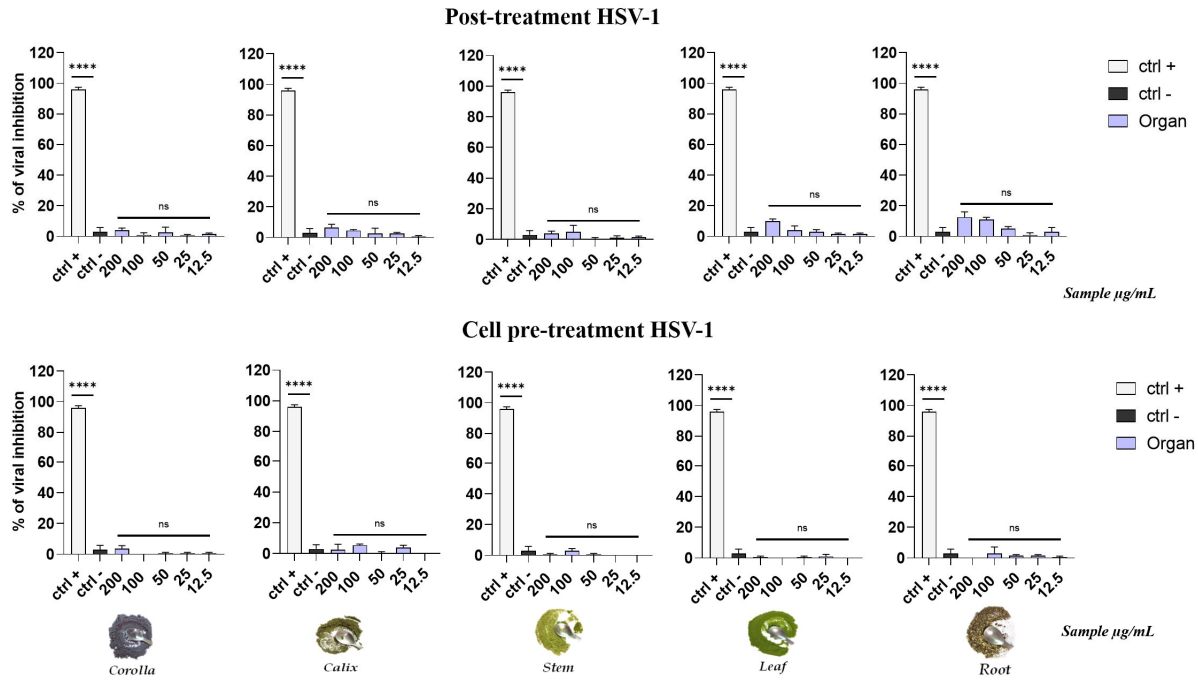
**Figure S2.** TOF-MS/MS spectra and hypothesized structures of compounds: **(A)** 3; **(B)** 4; **(C)** 6; **(D)** 11; **(E)** 13; **(F)** 16; **(G)** 18; **(H)** 19.



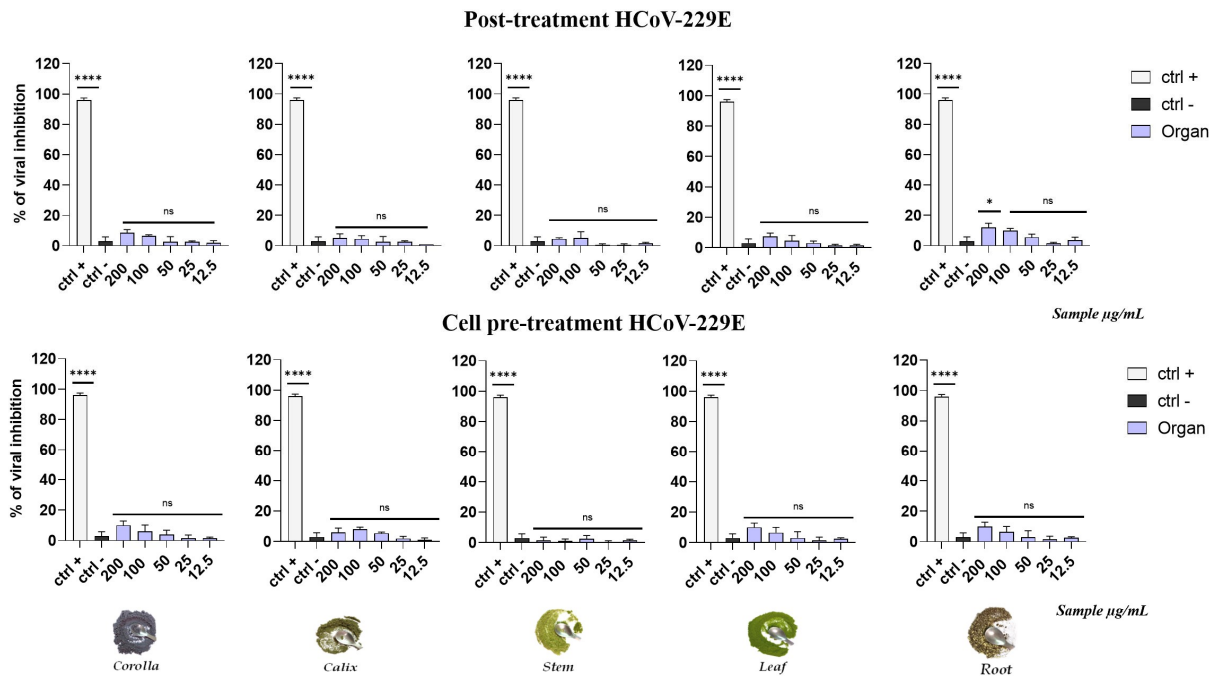
**Figure S3.** TOF-MS/MS spectra and hypothesized structures of compounds: (A) 14; (B) 15; (C) 17; (D) 9; (E) 10; (F) 12.



**Figure S4.** (A) TOF-MS/MS spectrum and (B) proposed fragmentation pattern of compound 8. Theoretical  $m/z$  values are reported below each structure.



**Figure S5.** Comparison of antiviral activity against HSV-1 in post infection and cell pre-treatment assay.



**Figure S6.** Comparison of antiviral activity against HCoV-229E in post infection and cell pre-treatment assay.