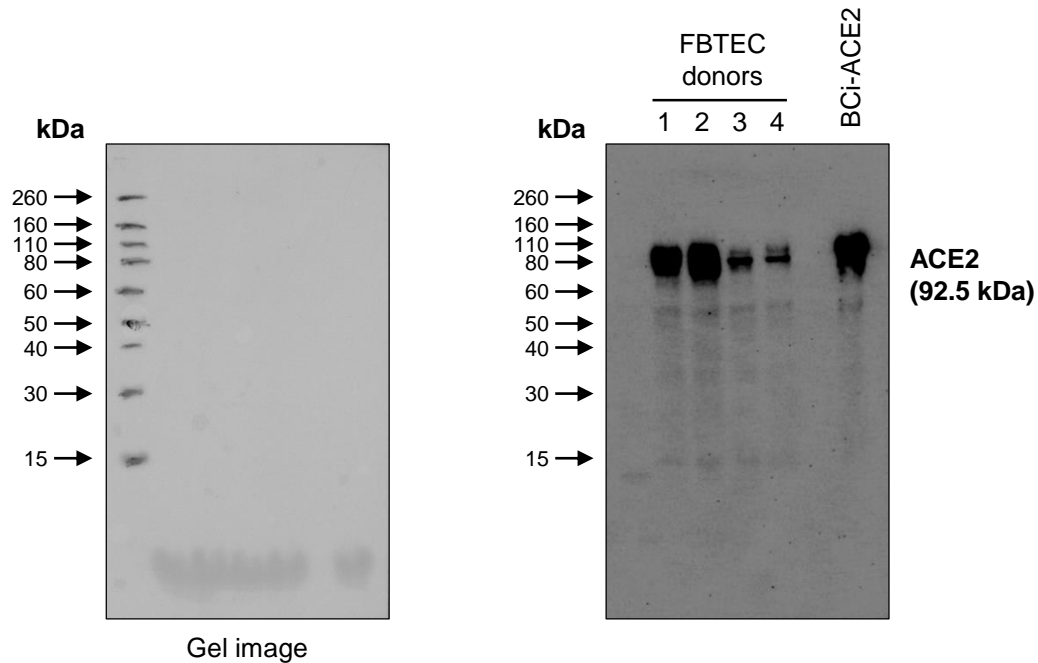
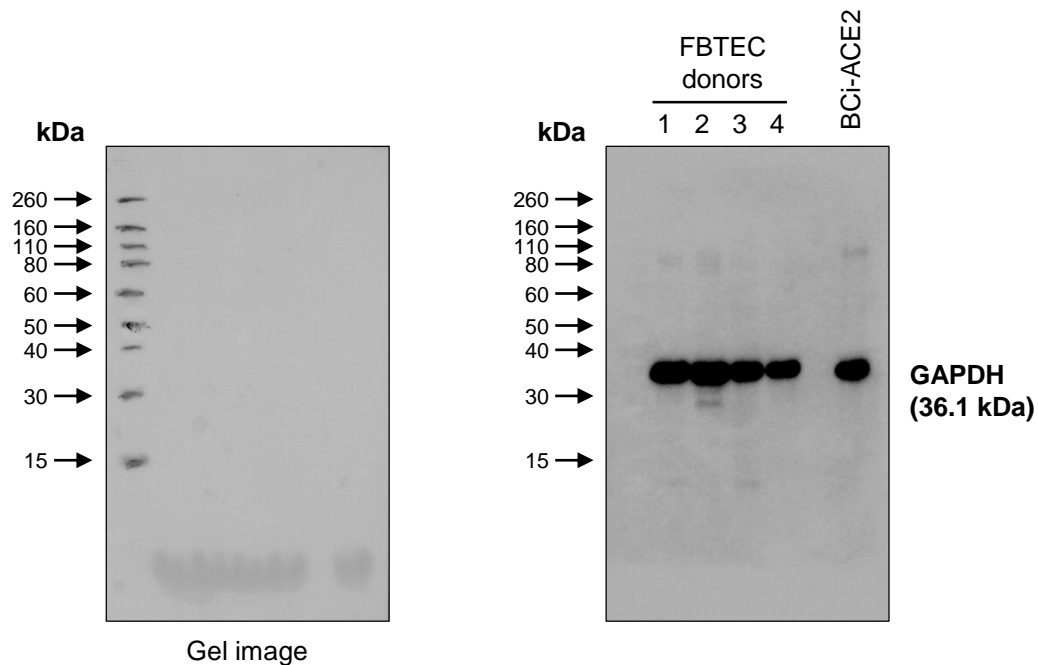
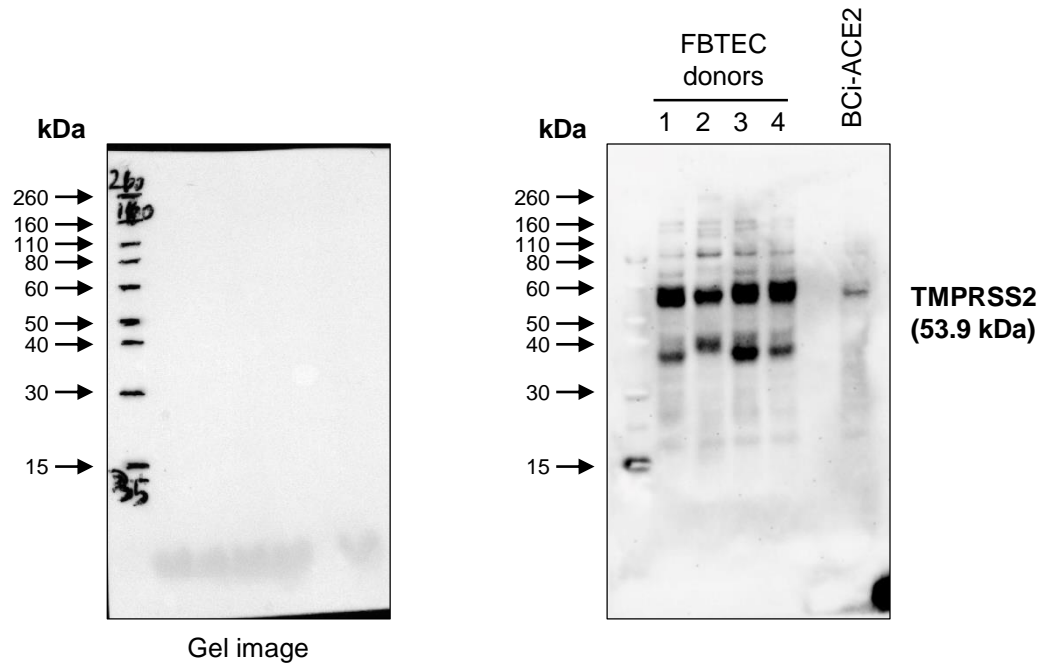
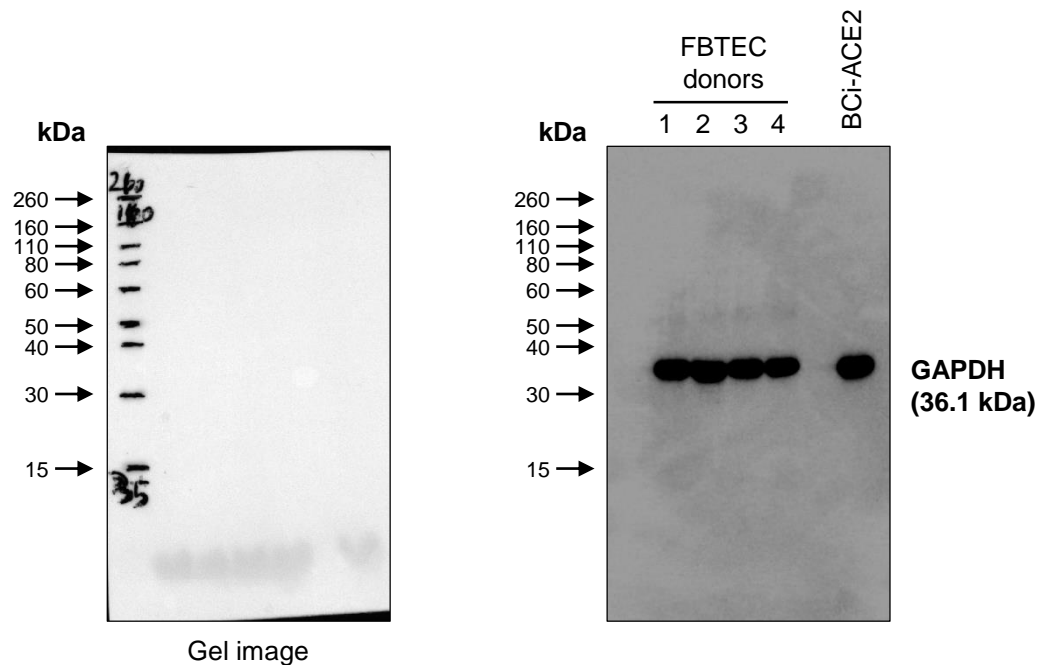


A. ACE2 western blot images**B. GAPDH western blot images**

Supplementary Figure S1. Original western blot images of ACE2 and GAPDH protein levels in $n = 4$ FBTEC donors (1-4) differentiated on ALI culture. At ALI day 28, the cells were harvested for analysis. Cell lysates of the human airway epithelial cell line BCI-NS1.1 over-expressing human ACE2 (BCi-ACE2) were used as a positive control. (A) ACE2 western blot images. (B) GAPDH western blot images.

A. TMPRSS2 western blot images**B. GAPDH western blot images**

Supplementary Figure S2. Original western blot images of TMPRSS2 and GAPDH protein levels in $n = 4$ FBTEC donors (1-4) differentiated on ALI culture. At ALI day 28, the cells were harvested for analysis. Cell lysates of the human airway epithelial cell line BCI-NS1.1 over-expressing human ACE2 (BCi-ACE2) were used as a positive control. (A) TMPRSS2 western blot images. (B) GAPDH western blot images.