

## Article

# Crude Extracts of *Talaromyces* Strains (Ascomycota) Affect Honey Bee (*Apis mellifera*) Resistance to Chronic Bee Paralysis Virus

Katerina Voadlova <sup>1</sup> , Benjamin Lamp <sup>2</sup> , Karel Benes <sup>3</sup>, Vladimir Matha <sup>4</sup>, Kwang-Zin Lee <sup>1</sup> and Andreas Vilcinskis <sup>1,5,\*</sup> 

<sup>1</sup> Branch Bioresources, Fraunhofer Institute for Molecular Biology and Applied Ecology (IME), Ohlebergsweg 12, 35392 Giessen, Germany

<sup>2</sup> Institute of Virology, Faculty of Veterinary Medicine, Justus-Liebig-University Giessen, Schubertstrasse 81, 35392 Giessen, Germany

<sup>3</sup> OncoRa s.r.o., Nemanicka 2722, 37001 Ceske Budejovice, Czech Republic

<sup>4</sup> Retorta s.r.o., Tresnova 316, 37382 Borso nad Vltavou, Czech Republic

<sup>5</sup> Institute for Insect Biotechnology, Justus-Liebig-University Giessen, Heinrich-Buff-Ring 26-32, 35392 Giessen, Germany

\* Correspondence: andreas.vilcinskis@agr.uni-giessen.de

**Abstract:** Viruses contribute significantly to the global decline of honey bee populations. One way to limit the impact of such viruses is the introduction of natural antiviral compounds from fungi as a component of honey bee diets. Therefore, we examined the effect of crude organic extracts from seven strains of the fungal genus *Talaromyces* in honey bee diets under laboratory conditions. The strains were isolated from bee bread prepared by honey bees infected with chronic bee paralysis virus (CBPV). The antiviral effect of the extracts was also quantified in vitro using mammalian cells as a model system. We found that three extracts (from strains B13, B18 and B30) mitigated CBPV infections and increased the survival rate of bees, whereas other extracts had no effect (B11 and B49) or were independently toxic (B69 and B195). Extract B18 inhibited the replication of feline calicivirus and feline coronavirus (FCoV) in mammalian cells, whereas extracts B18 and B195 reduced the infectivity of FCoV by ~90% and 99%, respectively. Our results show that nonpathogenic fungi (and their products in food stores) offer an underexplored source of compounds that promote disease resistance in honey bees.

**Keywords:** *Apis mellifera*; antiviral activity; CBPV; fungal extracts; *Talaromyces*; mycotoxins



**Citation:** Voadlova, K.; Lamp, B.; Benes, K.; Matha, V.; Lee, K.-Z.; Vilcinskis, A. Crude Extracts of *Talaromyces* Strains (Ascomycota) Affect Honey Bee (*Apis mellifera*) Resistance to Chronic Bee Paralysis Virus. *Viruses* **2023**, *15*, 343. <https://doi.org/10.3390/v15020343>

Academic Editor: Eugene V. Ryabov

Received: 5 January 2023

Revised: 20 January 2023

Accepted: 22 January 2023

Published: 25 January 2023



**Copyright:** © 2023 by the authors. Licensee MDPI, Basel, Switzerland. This article is an open access article distributed under the terms and conditions of the Creative Commons Attribution (CC BY) license (<https://creativecommons.org/licenses/by/4.0/>).

## 1. Introduction

The pollination of plants by insects is a key ecosystem service in agricultural and natural habitats [1]. An estimated 88% of flowering plants are pollinated by animals [2], and 35% of agricultural production is dependent on this process [1]. The recent decline in pollinator activity has therefore raised concerns about the potential impact on biodiversity, the economy and the quality of human life [3,4].

The western honey bee (*Apis mellifera* L., 1758) (Hymenoptera: Apidae) is a generalist pollinator of many plant species [1,4–6]. Multiple factors affect colony health and survival, including the availability of nutrients, beekeeping practices, and the spread of parasites and pathogens [4,7]. Honey bees can be infected by bacteria, fungi, protozoa, and viruses [7–10]. Until recently, viral diseases were considered a low risk, despite occasional outbreaks of infections caused by acute bee paralysis virus (ABPV), chronic bee paralysis virus (CBPV), black queen cell virus (BQCV), and sacbrood virus (SBV). However, the prevalence and virulence of some viruses has increased significantly in the last two decades and is linked to the transfer of the parasitic mite *Varroa destructor* from its original host—the Asian honey bee (*Apis ceranae* Fabricius, 1793)—to *A. mellifera* [11–14]. These mites harm honey bees

by feeding on their hemolymph and fat body, thus impairing their immunity, reproduction and vigor, and, consequently, reducing the likelihood of overwinter survival [14,15]. *V. destructor* is also responsible for the transmission of deformed wing virus (DWV) and viruses representing the so-called AKI complex (ABPV, Kashmir bee virus and Israeli acute paralysis virus) [16–18].

A significant deterioration in bee health has been observed in recent decades, which is most evident in the poor overwintering results recorded in the northern hemisphere. Annual surveys reported average winter losses of 43.7–44.8% in the USA [19–22] and up to 20.9% in Europe from 2012 to 2017 [23–25]. Honey bee losses cannot be attributed to a single cause, but mites and viruses are important factors, and effective control measures are therefore urgently required [26]. Current best practices to control viral diseases in honey bees include introduction of bee stocks with hygienic traits and the management of *V. destructor* infestation using acaricidal treatments [27]. Although control measures against mites are effective, it is not possible to eradicate them completely due to their complex life cycle, which leads to annually recurring problems in beekeeping [27,28]. The control and treatment of viral infections in honey bees has been investigated in many studies [29,30], but it has thus far been impossible to break the cycle of recurring mite infestations and viral infections in order to establish a biological balance [27,31–33].

Natural products are screened for novel compounds against viruses [34] that can also have potential application in beekeeping. Recent studies have shown that some phytochemicals can protect honey bees against parasites and viruses, including caffeine and thymol [35–37]. Furthermore, extracts of some polypore fungi have been shown to inhibit honey bee viruses under laboratory and field conditions [38]. Nonpathogenic filamentous fungi are found naturally in honey bee hives, for example in corbicular pollen and bee bread, and their main function is presumably to preserve the pollen [39–41]. Such commensal fungi have also been shown to antagonize the entomopathogenic fungus *Ascosphaera apis* (Maassen ex Claussen, L.S. Olive and Spiltoir, 1955), which causes chalkbrood disease [42,43], and to regulate the microbial community in stingless bees [44]. However, the role of the fungal community in honey bee hives has not been studied in detail.

We isolated fungi from bee bread and identified several strains of the genus *Talaromyces* (Benjamin, 1955) (Eurotiales: Trichocomaceae). This mold is commonly found in soil, plants, and foods [45]. *Talaromyces* species have previously been identified in honey [46], dead *A. dorsata* (Fabricius, 1793) adults [47], and in the nest and food stores of stingless bees representing the genus *Mellipona* (Illiger, 1806) [48]. In industrial biotechnology, *Talaromyces* species are used to produce enzymes, pigments, and bioactive compounds, including those with antibacterial, antifungal, and antiviral activity [45,49,50]. Given the ability of *Talaromyces* species to produce antiviral compounds [49,51], we decided to test the effect of their crude organic extracts on CBPV infections in *A. mellifera*. CBPV is a taxonomically unclassified, enveloped RNA virus [52] and was identified as the causative agent of chronic bee paralysis in the 1960s [53–55]. Recently, the virus has gained attention due to the rapid increase in the number of cases in some parts of Europe [12]. The symptoms of the disease are easy to identify, and the infection follows classical dose-mortality kinetics under laboratory conditions [53]. CBPV is therefore an ideal model system to test the antiviral activities of fungal extracts in honey bees. Accordingly, we compared the survival of CBPV-infected bees fed on a diet enriched with fungal extracts from *Talaromyces* vs. a control diet. We also tested the antiviral activity of the extracts in mammalian cell culture experiments using model-enveloped and nonenveloped viruses. The analysis of fungal extracts with natural antiviral activity may facilitate the development of biological control methods that improve colony health and fitness and, thus, support agricultural productivity and food security. Such extracts could also be suitable as antiviral therapeutics for human use.

## 2. Materials and Methods

### 2.1. Preparation of Fungal Crude Extracts

Fungal strains were isolated from honey bee bread collected in Kamenny Malikov, Czech Republic (49°12'51.533" N, 15°7'5.129" E) in March/April 2019. Following their characterization, they were deposited as *Talaromyces* strains in the Fraunhofer strain collection (EXT111748–EXT111754). Seven strains were cultivated in duplicate on Sabouraud dextrose agar (SDA) for 1 week at 25 °C. The mycelia were transferred to a 100 mL malt peptone medium comprised of 30 g/L Difco malt extract (Thermo Fisher Scientific, Hessen, Germany) and 5 g/L mycological peptone from meat (Carl Roth, Karlsruhe, Germany) at pH 5.4 ± 0.2. The cultures were incubated at 28 °C for 6 h, shaking at 175 rpm ( $\phi$  = 50 mm), and then at 26 °C and 70% relative humidity for a further 18 days as a static culture.

The cultures were freeze-dried and extracted with HPLC-grade methanol (VWR Chemicals, Darmstadt, Germany). Briefly, we added 40 mL of methanol and incubated the samples in an ultrasonic bath for 5–10 min before shaking them for 2 h at 175 rpm ( $\phi$  = 50 mm). The samples were then passed through filter paper, and the extraction process was repeated. The crude extracts were then dried in preweighed Falcon tubes using a rotary vacuum concentrator (Christ, Frankfurt, Germany), redissolved in 80% acetone, and diluted to a final concentration of 8 mg/mL. The crude extracts and diluted stocks were stored at –20 °C.

### 2.2. Honey Bee Survival Assay

#### 2.2.1. Honey Bee Feeding and Rearing in vitro

Honey bees were collected from two colonies in the apiary of Justus-Liebig University Giessen, Germany (50°34'06.7" N 8°40'19.7" E), between June and August 2021. A piece of a capped brood comb containing late-stage pupae was incubated at 35 °C and 70% relative humidity. Newly emerged bees were collected every 24 h, transferred to conical plastic boxes (18 × 18 × 7.9 cm) and fed on 1:1 (w/v) sucrose solution *ad libitum*. After 3 days, groups of 18–25 bees were housed in conical experimental plastic boxes (11.5 × 8.5 × 8 cm) containing a piece of sterile wax and were fed on the same sucrose solution supplemented with either 40 µg/mL of the fungal extracts or solvent alone (80% acetone) until the end of the experiment. The feeding tubes were weighed and replaced every third day. Feed consumption was recorded as the weight difference before and after tube replacement. A control box identical to the experimental boxes without bees was placed in the incubator to measure the rate of evaporation of the sucrose solution. The average value of the evaporation control was subtracted from the final volume of the solution consumed.

#### 2.2.2. Virus Titration—End Point Replication Assay (BID<sub>50</sub>)

The infectious inoculum was acquired from honey bee pupae infected with CBPV by injection, as previously described [56]. After incubation for 5 days and euthanasia at –20 °C, the bees were placed individually into 2 mL screw-cap tubes containing 830 µL of phosphate-buffered saline (PBS), seven 0.5 mm zircon beads, and two 3 mm glass beads, followed by homogenization (2 × 45 s) in a FastPrep device (MP Biomedicals, Santa Ana, CA, USA). The samples were cleared by centrifugation (18,000 g, 1 min, room temperature), and the supernatants were pooled, aliquoted, and stored at –80 °C.

To determine the infectious loads, the inoculum was titrated and reinjected into honey bee pupae. Capped honey bee brood was cut out of bee combs from healthy bee colonies (specified below) and incubated at 35 °C and 70% relative humidity. Blue-eyed bee pupae (days 13–15 of development) were prepared from the combs and transferred individually to the wells of 24-well plates. Before injection, the virus suspension was thawed on ice, centrifuged (5000 g, 10 min, 4 °C), and a 10-fold dilution series up to 1:10<sup>10</sup> was prepared in PBS. Eight pupae were injected in the thorax with 1 µL of each dilution or PBS as a negative control. The pupae were incubated until the time of emergence (day 21 of development). Virus infection was deduced from the death of infected pupae with

developmental stagnation 2 or 3 days after inoculation. The half-maximum bee pupae infectious dose ( $BID_{50}$ ) of the suspension was calculated using the Spearman and Kärber algorithm (Marco Binder calculator, Department of Infectious Diseases, Molecular Virology, Heidelberg University).

### 2.2.3. Infection of Adult Honey Bees

After 8 days of feeding with the fungal extracts, the bees were injected with CBPV to assess the effect of the extracts on the infection. To avoid repeated  $CO_2$  exposure, only 3–5 adult bees were anesthetized at a time (within ~10 s) before injection with 1  $\mu$ L of diluted CBPV into the thorax using a Nanoject II device (Drummond, Birmingham, AL, USA). The living and/or dead bees were counted every day until the mortality reached 100%. Honey bees that died within 24 h post-injection were excluded from the analysis to ensure that only deaths caused by viral infection were counted rather than those caused by handling or wounding.

The experiment was performed in 3–6 replicates and the data were combined. Based on the mortality rates before CBPV injection, 56–124 honey bees were infected for each fungal extract, with the exception of extract B195. The dietary addition of this extract caused high mortality, so only 10 bees were injected in the pilot experiment. Due to the obvious high toxicity of extract B195, this treatment was excluded from subsequent experiments. The data were evaluated in GraphPad Prism 9 using the Kaplan–Meier survival analysis tool.

## 2.3. Antiviral Activity of the Fungal Extracts in Mammalian Cell-Based Assays

### 2.3.1. Virus Stock Solutions

An end-point dilution assay was carried out to determine the half-maximum tissue culture infectious dose ( $TCID_{50}$ ) of the nonenveloped feline calicivirus (FCV strain F-9; ATTC VR-782) and the enveloped feline coronavirus (FCoV strain WSU 79-1146; ATTC VR-990) on Crandell-Rees feline kidney (CRFK) cells [57]. The virus suspensions were prepared as a 10-fold dilution series. The diluted viral suspensions (80  $\mu$ L) were incubated in 96-well plates with 50  $\mu$ L of the cell suspension ( $1 \times 10^4$  CRFK cells) at 37 °C for 3 days. The  $TCID_{50}$  and viral titer were calculated using the Spearman and Kärber algorithm.

### 2.3.2. Replication/Infection Inhibition Test with Fungal Crude Extracts

We tested four extracts that showed different effects in the bee pupae survival test (B11, B13, B18, and B195). A 10-fold serial dilution of each extract was prepared by mixing 20  $\mu$ L of the extract with 180  $\mu$ L of a complete cell culture medium consisting of Dulbecco's modified Eagle's medium (DMEM) supplemented with 10% heat-inactivated fetal calf serum (FCS). The addition of 50  $\mu$ L of the cell suspension ( $1 \times 10^4$  cells) was followed by incubation at 37 °C for 3 h. We then added 50  $\mu$ L of the virus suspension (1:20 dilution, corresponding to  $1 \times 10^4$   $TCID_{50}$  or  $\sim 7.5 \times 10^3$  plaque-forming units (PFU), and the plate was incubated at 37 °C for 3 days. The number of viral plaques was counted using an inverted cell culture microscope.

### 2.3.3. Virus Inactivation Test with Fungal Crude Extracts

We mixed 50  $\mu$ L of the concentrated FCV and FCoV stock ( $2 \times 10^5$   $TCID_{50}$ ) with the extracts in a 1:10 ratio in 96-well plates. We used 80% acetone as a solvent control. The mixture was incubated for 3 h at 37 °C before preparing a 10-fold dilution series with the pretreated virions. For the measurement of the remaining infectious dose, we added 150  $\mu$ L of the cell suspension ( $1 \times 10^4$  cells) and incubated at 37 °C for 3 days. Viral titers were determined by the evaluation of cytopathogenic effects.

## 2.4. Analysis of Fungal Compounds

### 2.4.1. UHPLC-HR-MS Analysis and Metabolite Annotation

We dried 200  $\mu$ L of each extract (80 mg/mL) in the rotary vacuum dryer, as described above, then redissolved the residue in 40  $\mu$ L of methanol and stored it at 4 °C overnight.

The samples were centrifuged (8000 g, 1 min, room temperature) and 30  $\mu$ L aliquots were transferred to glass vials and processed as previously described [58]. Briefly, the samples were fractionated on a 1290 UHPLC system (Agilent, Santa Clara, CA, USA) equipped with DAD, ELSD, and maXis II (Bruker, San Jose, CA, USA) ESI-qTOF-UHRMS. We used a gradient of 0.1% formic acid in water (buffer A) and 0.1% formic acid in acetonitrile (buffer B) at a flow rate of 600  $\mu$ L/min. The gradient began at 95% A and was held for 0.30 min before a transition to 4.75% A over 18.00 min and 0% A over 18.10 min, with a hold for 22.50 min. The gradient then increased to 95% A over 22.60 min followed by a hold for 25.00 min. The column oven temperature was set at 45 °C, and the column was an Acquity UPLC BEH C18 1.7  $\mu$ m (2.1  $\times$  100 mm) with an Acquity UPLC BEH C18 1.7  $\mu$ m VanGuard Pre-Column (2.1  $\times$  5 mm).

Raw data were processed with DataAnalysis v4.4 (Bruker) using recalibration with sodium formate, followed by RecalculateLinespectra with a threshold of 10,000 and subsequent FindMolecularFeatures (0.5 to 25 min, S/N = 0, minimal compound length = 8 spectra, smoothing width = 2, correlation coefficient threshold = 0.7). Bucketing was performed using ProfileAnalysis v2.3 (Bruker; 30–1080 s, 100–6000  $m/z$ , Advanced Bucketing with 24 s 5 ppm, no transformation, Bucketing basis = H1). Bucket annotations were performed using Metaboscape v3.0 (Bruker) based on the HR-  $m/z$  ratios and isotope patterns. The Bucket annotation list was manually compiled and consisted of ubiquitous *Talaromyces* sp. compounds reported in the literature (Table S1). Fragmentation patterns of the annotated buckets were additionally manually investigated and compared (where available) to those reported in the public GNPS spectral database.

#### 2.4.2. Molecular Networking Analysis

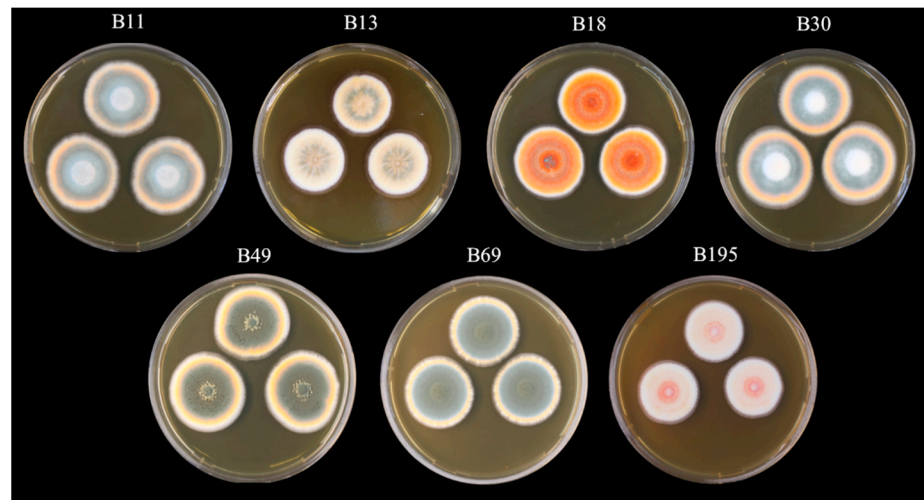
UHPLC-QTOF-MS/MS data were analyzed by molecular networking to allow the variable dereplication of known and unknown metabolites. Firstly, the raw data (.d files) were converted to plain text files (.mgf) containing MS/MS peak lists using MSConvert (ProteoWizard package) [59], wherein each parent ion is represented by a list of fragment  $m/z$  value pairs (peak picking—vendor MS level = 1–2; threshold—absolute intensity, 1000 most intense). Molecular networking followed established protocols [60] using a cosine similarity cutoff of 0.7. Additionally, ions needed a minimum of six shared fragments (tolerance  $\Delta$ ppm 0.05) with at least one partner ion to be included in the final network. In silico fragmentation predictions for a commercial database of compounds [61] (AntiBase 2017) [62] and our in-house reference compound MS/MS database were included in the network as reference substances to narrow down the molecular structure and to highlight compounds of interest. CytoScape v3.4.0 [63] was used to visualize the data as a network consisting of nodes and edges, wherein each node represents a parent ion and its color reflects the sample from which the MS/MS file was obtained. The edge width represents the cosine similarity score between nodes (thick edges indicate high similarity), and the size of the nodes represents the relative abundance of the ion in the extract.

### 3. Results

#### 3.1. Survival Analysis

##### 3.1.1. Preparation of Extracts and Feeding Assays

Based on ITS sequence analysis, the seven fungal strains were identified as *Talaromyces* with the highest similarity to *T. purpureogenus* (data not shown). Characterization of the strains, including phylogenetic analysis, is still underway, so we cannot yet definitely confirm the species designation. The dried methanol extracts of the seven selected *Talaromyces* strains (Figure 1) resulted in yields of 1.1–5.5 g (Table 1).



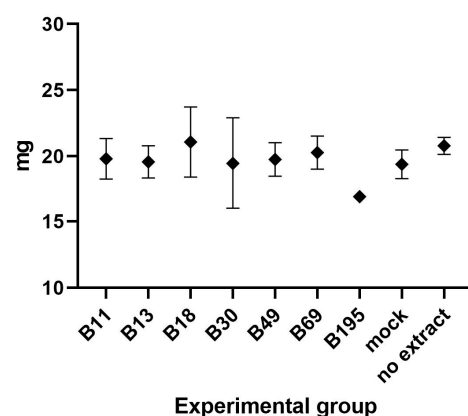
**Figure 1.** Seven strains of *Talaromyces* used in this study. The cultures were grown on malt extract agar at 25 °C for 1 week.

**Table 1.** Crude methanol extract yields from the seven *Talaromyces* strains used in this study.

Fungal Strain	Crude Extract Yield [g]
B11	5.52
B13	3.47
B18	1.05
B30	4.42
B49	5.33
B69	3.54
B195	1.24

The average daily consumption of sugar solution containing the fungal extract or acetone as a control was 19.68 mg/bee and did not differ significantly among the groups (one-way ANOVA;  $F = 0.63$ ,  $p = 0.741$ ; Figure 2).

#### Average daily consumption of sugar solution



**Figure 2.** The average daily consumption (mg/bee) of 1:1 (w/v) of sugar solution enriched with the fungal crude extracts, the extraction solvent (80% acetone) in the mock group, or no extract, before the injection of CBPV.

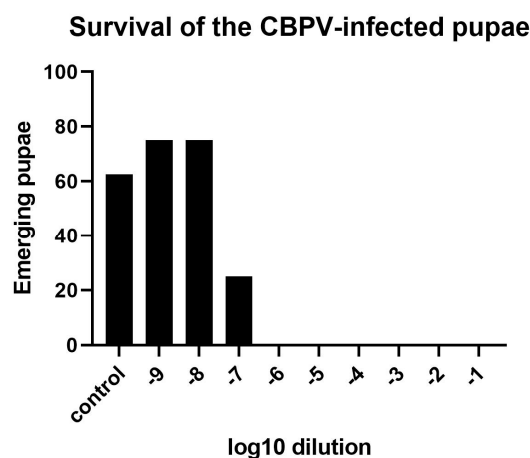
The mortality of the bees after feeding for 8 days reached 1.67–6.67% in most of the groups, but the mortality rate was 50% in the group fed with extract B195. Accordingly, B195 was excluded from further experiments after the first group of 10 bees was tested. In the other experimental groups, 56–124 bees were injected (Table 2).

**Table 2.** The mortality of bees fed on sugar solution enriched with fungal crude extracts before the CBPV injection or the solvent (80% acetone) in the mock group (followed by mock infection) or no extract in the no extract group (followed by CBPV injection).

Experimental Group	Mortality [%]	No. of Injected Bees
B11	1.67	59
B13	1.67	59
B18	2.36	124
B30	6.67	56
B49	4.00	120
B69	5.00	76
B195	50.00	10
no extract	3.75	77
mock acetone	5.00	76

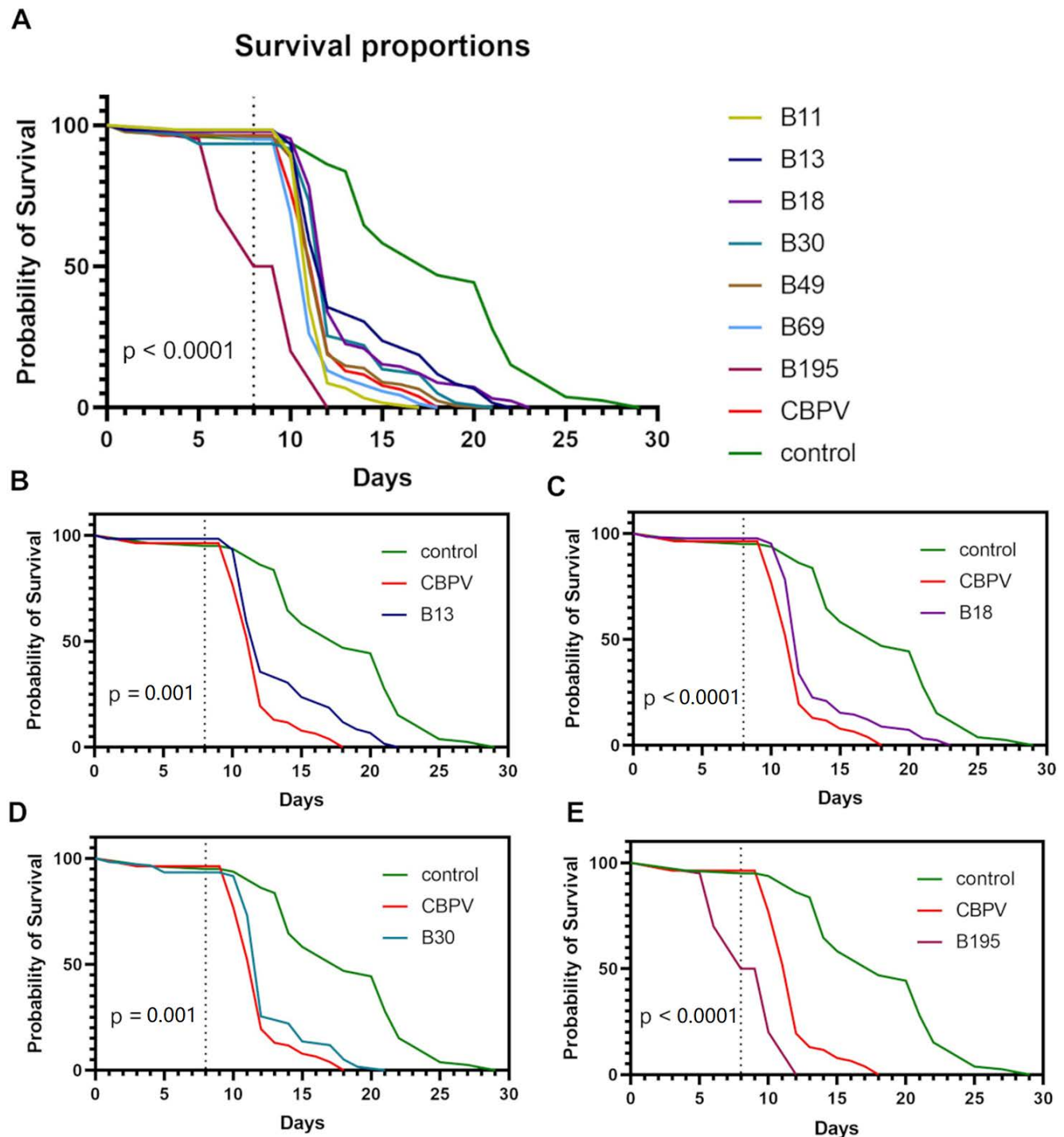
### 3.1.2. Determination of an Effective CBPV Infection Dose

The injection of bee pupae with 1  $\mu\text{L}$  of the  $10^6$ -fold CBPV dilution resulted in the death of all inoculated individuals, whereas the  $10^7$ -fold CBPV dilution killed 75% (Figure 3), and the  $10^8$ -fold (or higher) dilution did not differ in effect from the mock infection group injected with PBS. CBPV infection was not detected by RT-PCR in healthy emerging bees representing the  $10^7$ -fold dilution group. The  $\text{BD}_{50}/\text{mL}$  was  $3.16 \times 10^{10}$ , corresponding to a load of  $\sim 2.18 \times 10^{10}$  PFU/mL (calculated using the factor of 0.69). Due to 100% CBPV infection, which resulted in the death of all pupae in the group injected with the 1:10<sup>6</sup> dilution of the CBPV stock, we decided to use this dilution for the evaluation of the fungal extracts.



**Figure 3.** The percentage of surviving (emerging) pupae injected with serial dilutions of the CBPV viral titer and PBS (control).

There were significant differences in the survival curves among the groups (log-rank test;  $\chi^2 = 258.80$ ;  $p < 0.0001$ ). The statistical difference between the survival of the control and CBPV-infected groups (log-rank test;  $\chi^2 = 86.14$ ;  $p < 0.0001$ ) confirmed that the experimental setup was robust. Significant differences compared to the CBPV-infected group were observed in five of the groups fed on the extracts (Figure 4). However, the observed differences in bee survival were positive in only three of the five groups: B13, B18 and B30 (Figure 4B–D).



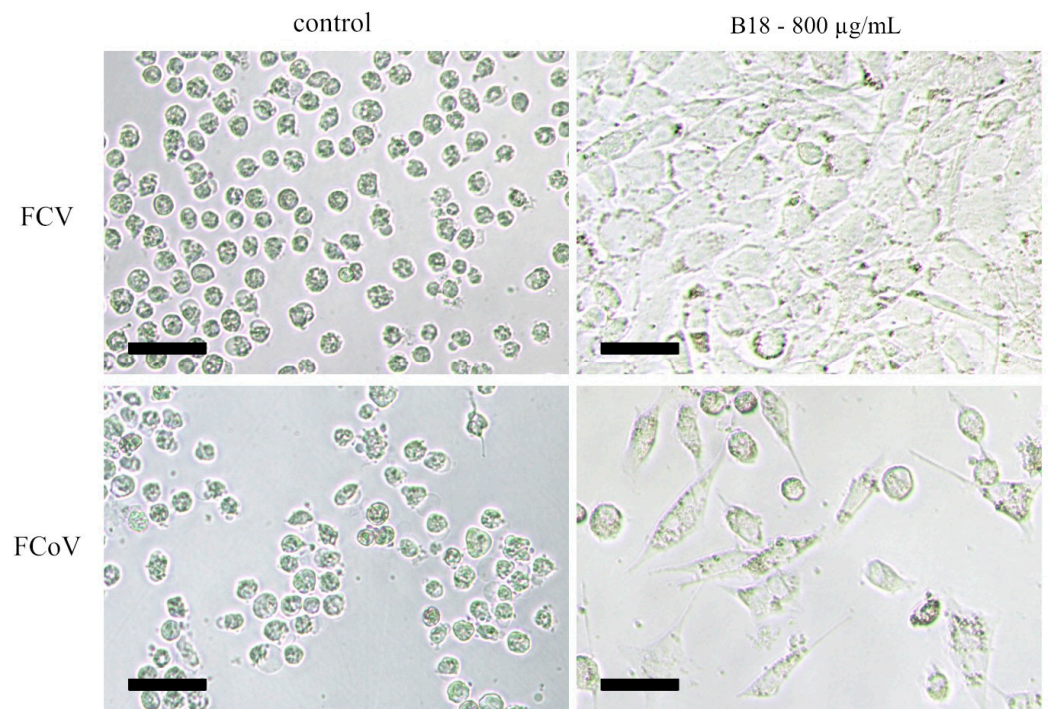
**Figure 4.** Survival proportions of bees fed on sugar solution containing fungal extracts or solvent (80% acetone) followed by the injection of CBPV or mock infection (control). The dotted line denotes the day of CBPV injection. The top graph shows the results for all seven extracts (A). For clarity, the extracts with significant effects are also shown in separate graphs (B–E), with the exception of B69, which was only just below the significance threshold ( $p = 0.044$ ).

### 3.2. Antiviral Activity of the Fungal Extracts in Mammalian Cell Culture

#### 3.2.1. Pre-Treated Cells

Virus growth was observed in CRFK cells pretreated with the dilution series of most fungal extracts 3 days after infection with  $1 \times 10^4$  TCID<sub>50</sub> of FCV or FCoV as revealed

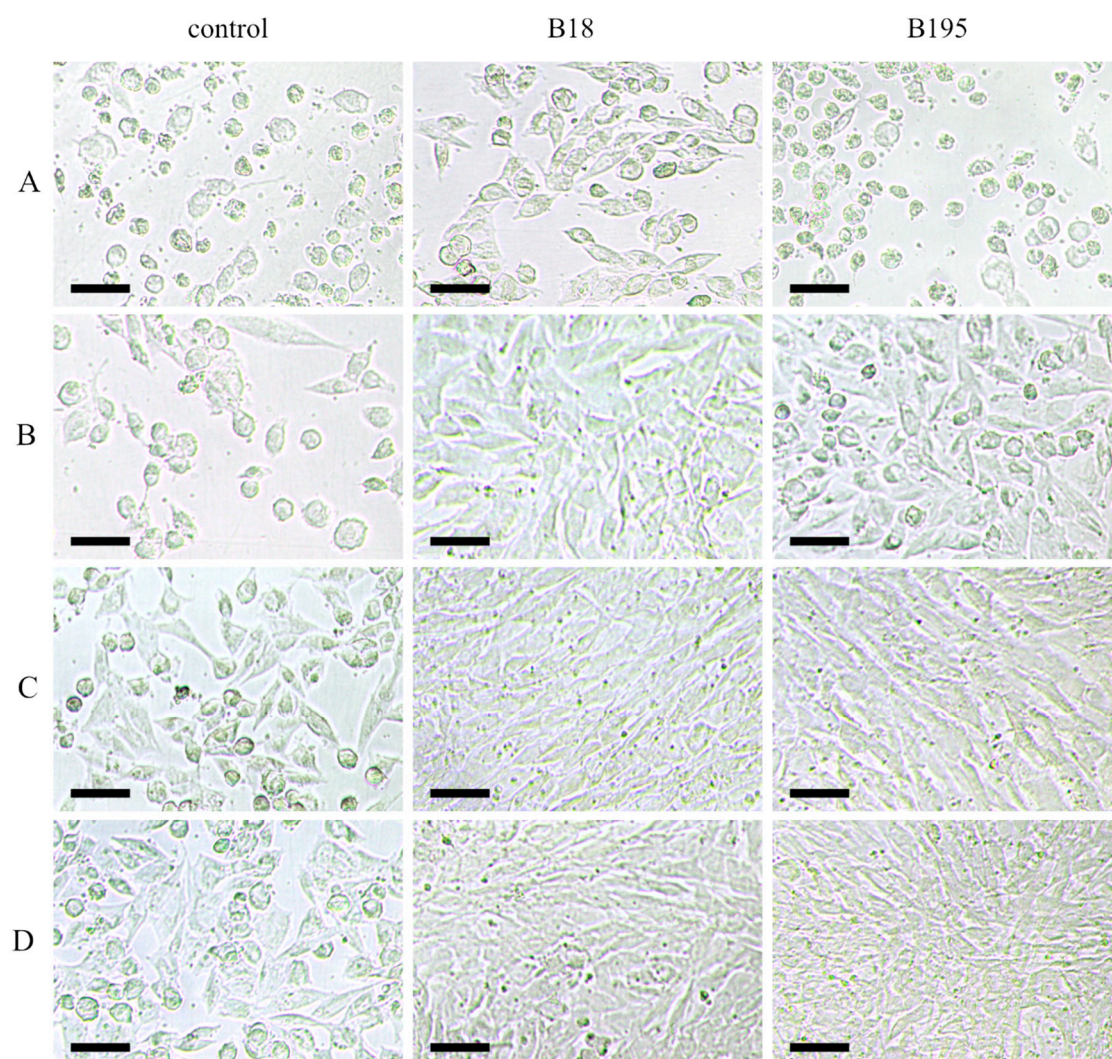
by the near-complete destruction of the monolayers due to viral lysis. However, in the case of extract B18, we observed a strong and dose-dependent suppression of viral replication, with mostly healthy cells in higher concentrations. The 1:10 dilution of the extract (concentration = 800 µg/mL) was not cytotoxic but strongly inhibited the replication of both viruses and even resulted in the development of an intact monolayer for the cells infected with FCV (Figure 5). Extracts B11 and B195 were highly cytotoxic at a dilution of 800 µg/mL in the noninfected control cells and showed no antiviral protection at higher dilutions. Therefore, any potential antiviral effects of higher concentrations could not be investigated in this assay.



**Figure 5.** CRFK cells infected with FCV (top left) and FCoV (bottom left) in the control (solvent only) wells. The addition of the B18 extract inhibited the replication of both viruses (right) with a stronger effect on FCV. Note the healthy and infected cells after FCoV infection (bottom right) and the healthy monolayer after FCV infection (top right). Scale bar: 50 µm.

### 3.2.2. Pretreated Virions

We also incubated the virus suspension with high concentrations of the extracts to investigate their direct virucidal effects. The active ingredients were diluted out during subsequent titration of the virus suspensions, which limited the influence of cellular factors. Contrary to our expectations, the enveloped virus FCoV was unaffected by the solvent-only treatment, which comprised a 1:20 dilution of 80% acetone for 3 h, despite the known mode of action of lipid solvents against viruses [64]. Indeed, the virus titer in the acetone-treated sample was  $4 \times 10^6$  TCID<sub>50</sub>/mL, whereas 1:20 dilutions of extracts B18 and B195 (400 µg/mL) reduced the virus titer to  $1.5 \times 10^5$  and  $1.5 \times 10^4$  focus-forming units (FFU)/mL, respectively (Figure 6). The other extracts had no effect on the FCoV titer. Again, contrary to our expectations, the solvent-only treatment resulted in the complete inactivation of FCV, which is a nonenveloped virus. Due to the unexpectedly strong influence of the solvent, we were unable to evaluate the virucidal effect of the extracts against FCV.



**Figure 6.** The FCoV stock of  $2 \times 10^5$  TCID<sub>50</sub> (control (A–D)) caused visible symptoms of infection in the CRFK cells, as revealed by the strong cytopathic effects. Pre-incubation of extracts B18 and B195 with the FCoV stock reduced the viral titers by ~99% and ~90%, respectively. Note the cytotoxic effects of the extracts at higher concentrations (B18 and B195, row (A)), and the absence of infection in rows (B–D). Rows (A–D) represent the 10-fold dilution series of the virus stocks treated with the solvent (control) or extracts B18 and B195. Scale bar: 50  $\mu$ m.

### 3.3. Metabolite Annotation

We were able to annotate Rubratoxins A and B, with an annotation confidence level of two as defined by the Chemical Analysis Working Group of the Metabolomics Standards Initiative [65], on the basis of their molecular formulae and identical fragmentation patterns with those deposited in the public GNPS spectral database. The molecular networking analysis revealed the presence of several derivatives (Figure S1). An in-depth analysis of these derivatives was out of the scope of the present report.

## 4. Discussion

Numerous studies have focused on the biotic and abiotic factors that influence the success of overwintering in honey bees [7,66,67]. However, the colonization of the hive by microbes, including nonpathogenic fungi, has received little attention thus far.

Bee bread contains fungi that are acquired either from honey bee salivary secretions or the collected pollen. Some of these fungal genera are repeatedly found in bee bread [39,40]. However, to the best of our knowledge, this is the first report describing

the genus *Talaromyces* isolated from the bee bread of *A. mellifera*. *Talaromyces* has been found in honey [46], in dead *A. dorsata* (Fabricius, 1793) adults [47], and in stingless bees (*Melipona* spp.) [48]. Multiple studies have reported a relationship between *Talaromyces* spp. and insects from different orders over the last decades [68]. We conducted the first study on the antiviral effects of organic extracts of different *Talaromyces* strains isolated from bee bread.

Our in vivo experiments showed that extracts of *Talaromyces* strains isolated from bee bread had diverse biological effects. The addition of three extracts improved the survival rate and prolonged the average lifespan of CBPV-infected honey bees, but others had no significant impact or were toxic to the bees and therefore increased the mortality rate. Such experiments are complex because they merge direct and indirect effects that are difficult to disentangle, so we complemented the in vivo assay with an in vitro system by testing the fungal extracts in an established mammalian cell culture model. We exposed treated and untreated CRFK cells to the enveloped virus FCoV and the nonenveloped virus FCV. The most potent extracts derived from strains B18 and B195 repressed viral replication in a dose-dependent manner. Although the cells were preincubated with the fungal extracts and only subsequently infected with the viruses, we cannot completely rule out the possibility that the effects were due to virucidal properties of compounds in the extracts. A second virus inactivation assay showed that extract B18 indeed inactivated ~99% of FCoV virions. However, it is likely that additional pharmacological mechanisms were involved in the suppression of viral replication because the virucidal effect alone could not explain the low effective dose of the extract. Several antiviral compounds have been isolated from *Talaromyces* spp., including vanitaracin A, coculnol, and chrodrimanin F [51,69]. The in-depth analysis of compounds in our extracts was beyond the scope of the current study but will be investigated in the future.

The toxic effects of some extracts in honey bees were also confirmed in the cell culture model, where the high cytotoxicity of these extracts prevented the determination of antiviral properties. We assume that such toxic effects are associated with mycotoxins, such as rubratoxins, produced by some *Talaromyces* strains. Recently, rubratoxin B, produced by *T. purpureogenus*, was shown to have insecticidal activity against locusts [70]. Honey bees are exposed to many types of mycotoxins in pollen, such as aflatoxins and ochratoxins, fumosins, zearalenone, and deoxynivalenol, produced mainly by fungi of the genera *Aspergillus*, *Penicillium* and *Fusarium* [71]. Some *Talaromyces* strains used in our study produced rubratoxins A and B (B11, B30, B49, B69 and B195). However, no rubratoxins were found in the extracts of strains B13 and B18, which had a positive effect on honey bee survival. These data suggest that the presence of rubratoxins can increase the mortality of honey bees, although extract B30 (also containing rubratoxins) promoted honey bee survival, so the interactions appear to be more complex. The concentrations of these mycotoxins in the extracts, and the concentrations that are tolerable for honey bees, remain unknown and will be investigated in future experiments.

Optimal conditions for fungal growth and mycotoxin production can deviate significantly. Such differences are also observed among fungal species and between different strains of the same species. Mycotoxin production is often strain-dependent, which is consistent with our results. Furthermore, fungal growth and mycotoxin production depend on many other factors, such as temperature, water availability, pH, and illumination [72,73].

To make pollen storable and to increase the digestibility of its components, honey bees mix collected pollen with nectar and salivary gland secretions and keep it in their wax cells to let it ripen, generating so-called bee bread. The mixture undergoes complex fermentation processes, mainly influenced by lactic acid bacteria and various fungi [39]. The acidic pH, low water activity, high oxidation-reduction potential, and presence of competitive microorganisms create unfavorable conditions for microbial growth, thus protecting bee bread from spoilage [41]. However, some microbes, especially molds and yeasts, can grow slowly in such an environment. Some *Talaromyces* species are particularly tolerant of dry conditions and can grow at a water activity of 0.82, whereas other fungi can grow in a water

activity range of 0.61–0.85 [46]. Furthermore, the presence of nutrients and the absence of competitive bacteria under these conditions can broaden the range of temperatures and water activities suitable for spore germination and growth [72], allowing the production of short (<10 µm) hyphae by a few germinating spores [39]. In the dormant state, the metabolism of fungal spores is shut down to approximately 50% [39,74], but metabolic activity increases greatly during the first phase of germination, where swelling occurs prior to germ tube formation [75].

Our results provide the first description of *Talaromyces* strains in hives of the honey bee (*A. mellifera*) and the relationship between fungal bioactivity and honey bee health under laboratory conditions. By producing antiviral compounds and mycotoxins, *Talaromyces* can protect bees from viruses but can also cause detrimental effects. A more realistic simulation of natural conditions would help us to understand the balance between toxic and antiviral compounds in bee bread colonized by *Talaromyces* and the relevance to honey bee antiviral resistance. This would also be facilitated by the identification of specific compounds that confer the antiviral and toxic effects.

**Supplementary Materials:** The following supporting information can be downloaded at: <https://www.mdpi.com/article/10.3390/v15020343/s1>, Figure S1: Molecular networking analysis; Table S1: List of *Talaromyces* compounds used for the metabolite annotation.

**Author Contributions:** Conceptualization, V.M., A.V. and B.L.; methodology, K.V., K.-Z.L. and B.L.; formal analysis, K.V.; investigation, K.V., B.L., K.B.; resources, A.V., K.-Z.L., V.M.; data curation, K.V.; writing—original draft preparation, K.V.; writing—review and editing, B.L., K.-Z.L.; visualization, K.V.; supervision, K.-Z.L.; project administration, K.-Z.L.; funding acquisition, A.V. All authors have read and agreed to the published version of the manuscript.

**Funding:** Andreas Vilcinskas acknowledges generous funding by the Hessen State Ministry of Higher Education, Research and the Arts (HMWK) via the ‘LOEWE Center for Translational Biodiversity Genomics.’ The authors also thank to Czech Ministry of Agriculture for the financial support—project NAZV QK1910356.

**Institutional Review Board Statement:** Not applicable.

**Data Availability Statement:** Not applicable.

**Acknowledgments:** We thank Richard M. Twyman for professional editing of the manuscript. Special thanks to Maria Patras for data processing and to Christoph Hartwig for technical support. We also thank Vladislav Curn for his support.

**Conflicts of Interest:** The authors declare no conflict of interest. The funders had no role in the design of the study; in the collection, analyses, or interpretation of data; in the writing of the manuscript; or in the decision to publish the results.

## References

1. Klein, A.M.; Vaissiere, B.E.; Cane, J.H.; Steffan-Dewenter, I.; Cunningham, S.A.; Kremen, C.; Tscharntke, T. Importance of Pollinators in Changing Landscapes for World Crops. *Proc. R. Soc. B Biol. Sci.* **2007**, *274*, 303–313. [CrossRef] [PubMed]
2. Ollerton, J.; Winfree, R.; Tarrant, S. How Many Flowering Plants Are Pollinated by Animals? *Oikos* **2011**, *120*, 321–326. [CrossRef]
3. Wagner, D.L.; Grames, E.M.; Forister, M.L.; Berenbaum, M.R.; Stopak, D. Insect Decline in the Anthropocene: Death by a Thousand Cuts. *Proc. Natl. Acad. Sci. USA* **2021**, *118*, e2023989118. [CrossRef] [PubMed]
4. Potts, S.G.; Biesmeijer, J.C.; Kremen, C.; Neumann, P.; Schweiger, O.; Kunin, W.E. Global Pollinator Declines: Trends, Impacts and Drivers. *Trends Ecol. Evol.* **2010**, *25*, 345–353. [CrossRef]
5. Klatt, B.K.; Holzschuh, A.; Westphal, C.; Clough, Y.; Smit, I.; Pawelzik, E.; Tscharntke, T. Bee Pollination Improves Crop Quality, Shelf Life and Commercial Value. *Proc. R. Soc. B Biol. Sci.* **2013**, *281*, 20132440. [CrossRef]
6. Garibaldi, L.A.; Aizen, M.A.; Cunningham, S.A.; Klein, A.M. Pollinator Shortage and Global Crop Yield: Looking at the Whole Spectrum of Pollinator Dependency. *Commun. Integr. Biol.* **2009**, *2*, 37–39. [CrossRef]
7. Steinhauer, N.; Kulhanek, K.; Antúnez, K.; Human, H.; Chantawannakul, P.; Chauzat, M.-P.; VanEngelsdorp, D. Drivers of Colony Losses. *Curr. Opin. Insect Sci.* **2018**, *26*, 142–148. [CrossRef]
8. Ravoet, J.; Maharramov, J.; Meeus, I.; De Smet, L.; Wenseleers, T.; Smagghe, G.; de Graaf, D.C. Comprehensive Bee Pathogen Screening in Belgium Reveals Crithidia Mellificae as a New Contributory Factor to Winter Mortality. *PLoS ONE* **2013**, *8*, e72443. [CrossRef]

9. Fünfhaus, A.; Ebeling, J.; Genersch, E. Bacterial Pathogens of Bees. *Curr. Opin. Insect Sci.* **2018**, *26*, 89–96. [[CrossRef](#)]
10. Quintana, L. Fungal Infections In Honey Bees. *Fungal Genom. Biol.* **2015**, *05*, 1000118. [[CrossRef](#)]
11. Genersch, E.; Aubert, M. Emerging and Re-Emerging Viruses of the Honey Bee (*Apis Mellifera* L.). *Vet. Res.* **2010**, *41*, 54. [[CrossRef](#)] [[PubMed](#)]
12. Budge, G.E.; Simcock, N.K.; Holder, P.J.; Shirley, M.D.F.; Brown, M.A.; Van Weymers, P.S.M.; Evans, D.J.; Rushton, S.P. Chronic Bee Paralysis as a Serious Emerging Threat to Honey Bees. *Nat. Commun.* **2020**, *11*, 2164. [[CrossRef](#)] [[PubMed](#)]
13. Teixeira, E.W.; Chen, Y.; Message, D.; Pettis, J.; Evans, J.D. Virus Infections in Brazilian Honey Bees. *J. Invertebr. Pathol.* **2008**, *99*, 117–119. [[CrossRef](#)] [[PubMed](#)]
14. Noël, A.; Le Conte, Y.; Mondet, F. Varroa Destructor: How Does It Harm *Apis Mellifera* Honey Bees and What Can Be Done about It? *Emerg. Top. Life Sci.* **2020**, *4*, 45–57. [[CrossRef](#)] [[PubMed](#)]
15. Ramsey, S.D.; Ochoa, R.; Bauchan, G.; Gulbranson, C.; Mowery, J.D.; Cohen, A.; Lim, D.; Joklik, J.; Cicero, J.M.; Ellis, J.D.; et al. Varroa Destructor Feeds Primarily on Honey Bee Fat Body Tissue and Not Hemolymph. *Proc. Natl. Acad. Sci. USA* **2019**, *116*, 1792–1801. [[CrossRef](#)]
16. Forgách, P.; Bakonyi, T.; Tapaszi, Z.; Nowotny, N.; Rusvai, M. Prevalence of Pathogenic Bee Viruses in Hungarian Apiaries: Situation before Joining the European Union. *J. Invertebr. Pathol.* **2008**, *98*, 235–238. [[CrossRef](#)] [[PubMed](#)]
17. Neumann, P.; Yañez, O.; Fries, I.; De Miranda, J.R. Varroa Invasion and Virus Adaptation. *Trends Parasitol.* **2012**, *28*, 353–354. [[CrossRef](#)]
18. Wilfert, L.; Long, G.; Leggett, H.C.; Schmid-Hempel, P.; Butlin, R.; Martin, S.J.M.; Boots, M. Honeybee Disease: Deformed Wing Virus Is a Recent Global Epidemic in Honeybees Driven by Varroa Mites. *Science* **2016**, *351*, 594–597. [[CrossRef](#)]
19. Kulhanek, K.; Steinhauer, N.; Rennich, K.; Caron, D.M.; Sagili, R.R.; Pettis, J.S.; Ellis, J.D.; Wilson, M.E.; Wilkes, J.T.; Tarpy, D.R.; et al. Encuesta Nacional 2015–2016 Sobre Pérdidas Anuales de Colonias de La Abeja de La Miel Manejada En Los EE.UU. *J. Apic. Res.* **2017**, *56*, 328–340. [[CrossRef](#)]
20. Lee, K.V.; Steinhauer, N.; Rennich, K.; Wilson, M.E.; Tarpy, D.R.; Caron, D.M.; Rose, R.; Delaplane, K.S.; Baylis, K.; Lengerich, E.J.; et al. A National Survey of Managed Honey Bee 2013–2014 Annual Colony Losses in the USA. *Apidologie* **2015**, *46*, 292–305. [[CrossRef](#)]
21. Seitz, N.; Traynor, K.S.; Steinhauer, N.; Rennich, K.; Wilson, M.E.; Ellis, J.D.; Rose, R.; Tarpy, D.R.; Sagili, R.R.; Caron, D.M.; et al. Encuesta Nacional Sobre La Pérdida Anual de Colmenas de Abejas Manejadas Durante 2014–2015 En Los EEUU. *J. Apic. Res.* **2015**, *54*, 292–304. [[CrossRef](#)]
22. Steinhauer, N.A.; Rennich, K.; Wilson, M.E.; Caron, D.M.; Lengerich, E.J.; Pettis, J.S.; Rose, R.; Skinner, J.A.; Tarpy, D.R.; Wilkes, J.T.; et al. A National Survey of Managed Honey Bee 2012–2013 Annual Colony Losses in the USA: Results from the Bee Informed Partnership. *J. Apic. Res.* **2014**, *53*, 1–18. [[CrossRef](#)]
23. Jacques, A.; Laurent, M.; Ribière-Chabert, M.; Saussac, M.; Bougeard, S.; Budge, G.E.; Hendrikx, P.; Chauzat, M.P. A Pan-European Epidemiological Study Reveals Honey Bee Colony Survival Depends on Beekeeper Education and Disease Control. *PLoS ONE* **2017**, *12*, e0172591. [[CrossRef](#)] [[PubMed](#)]
24. Brodschneider, R.; Gray, A.; Adjlane, N.; Ballis, A.; Brusbardis, V.; Charrière, J.D.; Chlebo, R.; Coffey, M.F.; Dahle, B.; de Graaf, D.C.; et al. Multi-Country Loss Rates of Honey Bee Colonies during Winter 2016/2017 from the COLOSS Survey. *J. Apic. Res.* **2018**, *57*, 452–457. [[CrossRef](#)]
25. Brodschneider, R.; Gray, A.; van der Zee, R.; Adjlane, N.; Brusbardis, V.; Charrière, J.D.; Chlebo, R.; Coffey, M.F.; Crailsheim, K.; Dahle, B.; et al. Preliminary Analysis of Loss Rates of Honey Bee Colonies during Winter 2015/16 from the COLOSS Survey. *J. Apic. Res.* **2016**, *55*, 375–378. [[CrossRef](#)]
26. Gisder, S.; Genersch, E. Special Issue: Honey Bee Viruses. *Viruses* **2015**, *7*, 5603–5608. [[CrossRef](#)] [[PubMed](#)]
27. Rosenkranz, P.; Aumeier, P.; Ziegelmann, B. Biology and Control of Varroa Destructor. *J. Invertebr. Pathol.* **2010**, *103*, S96–S119. [[CrossRef](#)]
28. Traynor, K.S.; Mondet, F.; de Miranda, J.R.; Techer, M.; Kowallik, V.; Oddie, M.A.Y.; Chantawannakul, P.; McAfee, A. Varroa Destructor: A Complex Parasite, Crippling Honey Bees Worldwide. *Trends Parasitol.* **2020**, *36*, 592–606. [[CrossRef](#)]
29. Yang, D.; Xu, X.; Zhao, H.; Yang, S.; Wang, X.; Zhao, D.; Diao, Q.; Hou, C. Diverse Factors Affecting Efficiency of RNAi in Honey Bee Viruses. *Front. Genet.* **2018**, *9*, 384. [[CrossRef](#)]
30. Simone-Finstrom, M.; Aronstein, K.; Goblirsch, M.; Rinkevich, F.; de Guzman, L. Gamma Irradiation Inactivates Honey Bee Fungal, Microsporidian, and Viral Pathogens and Parasites. *J. Invertebr. Pathol.* **2018**, *153*, 57–64. [[CrossRef](#)]
31. Sumpter, D.J.T.; Martin, S.J. The Dynamics of Virus Epidemics in Varroa-Infested Honey Bee Colonies. *J. Anim. Ecol.* **2004**, *73*, 51–63. [[CrossRef](#)]
32. Le Conte, Y.; Ellis, M.; Ritter, W. Varroa Mites and Honey Bee Health: Can Varroa Explain Part of the Colony Losses? *Apidologie* **2010**, *41*, 353–363. [[CrossRef](#)]
33. Locke, B.; Forsgren, E.; Fries, I.; de Miranda, J.R. Acaricide Treatment Affects Viral Dynamics in Varroa Destructor-Infested Honey Bee Colonies via Both Host Physiology and Mite Control. *Appl. Environ. Microbiol.* **2012**, *78*, 227–235. [[CrossRef](#)] [[PubMed](#)]
34. Eichberg, J.; Maiworm, E.; Oberpaul, M.; Czudai-matwich, V.; Lüddecke, T.; Vilcinskis, A.; Hardes, K. Virus Infections. *Viruses* **2022**, *14*, 2452. [[CrossRef](#)]
35. Palmer-Young, E.C.; Tozkar, C.O.; Schwarz, R.S.; Chen, Y.; Irwin, R.E.; Adler, L.S.; Evans, J.D. Nectar and Pollen Phytochemicals Stimulate Honey Bee (Hymenoptera: Apidae) Immunity to Viral Infection. *J. Econ. Entomol.* **2017**, *110*, 1959–1972. [[CrossRef](#)]

36. Hsieh, E.M.; Berenbaum, M.R.; Dolezal, A.G. Ameliorative Effects of Phytochemical Ingestion on Viral Infection in Honey Bees. *Insects* **2020**, *11*, 698. [\[CrossRef\]](#)
37. Parekh, F.; Daughenbaugh, K.F.; Flenniken, M.L. Chemical Stimulants and Stressors Impact the Outcome of Virus Infection and Immune Gene Expression in Honey Bees (*Apis Mellifera*). *Front. Immunol.* **2021**, *12*, 747848. [\[CrossRef\]](#)
38. Stamets, P.E.; Naeger, N.L.; Evans, J.D.; Han, J.O.; Hopkins, B.K.; Lopez, D.; Moershel, H.M.; Nally, R.; Sumerlin, D.; Taylor, A.W.; et al. Extracts of Polypore Mushroom Mycelia Reduce Viruses in Honey Bees. *Sci. Rep.* **2018**, *8*, 13936. [\[CrossRef\]](#)
39. Gilliam, M.; Prest, D.B.; Lorenz, B.J. Microbiology of Pollen and Bee Bread: Taxonomy and Enzymology of Molds. *Apidologie* **1989**, *20*, 53–68. [\[CrossRef\]](#)
40. Sinpoo, C.; Williams, G.R.; Chantawannakul, P. Dynamics of Fungal Communities in Corbicular Pollen and Bee Bread. *Chiang Mai J. Sci.* **2017**, *44*, 1235–1247.
41. Anderson, K.E.; Carroll, M.J.; Sheehan, T.I.M.; Mott, B.M. Hive-Stored Pollen of Honey Bees: Many Lines of Evidence Are Consistent with Pollen Preservation, Not Nutrient Conversion. *Mol. Ecol.* **2014**, *23*, 5904–5917. [\[CrossRef\]](#) [\[PubMed\]](#)
42. Gilliam, M.; Taber, S.; Lorenz, B.J.; Prest, D.B. Factors Affecting Development of Chalkbrood Disease in Colonies of Honey Bees, *Apis Mellifera*, Fed Pollen Contaminated with *Ascosphaera Apis*. *J. Invertebr. Pathol.* **1988**, *52*, 314–325. [\[CrossRef\]](#)
43. Disayathanoowat, T.; Li, H.; Supapimon, N.; Suwannarach, N.; Lumyong, S.; Chantawannakul, P.; Guo, J. Different Dynamics of Bacterial and Fungal Communities in Hive-Stored Bee Bread and Their Possible Roles: A Case Study from Two Commercial Honey Bees in China. *Microorganisms* **2020**, *8*, 264. [\[CrossRef\]](#) [\[PubMed\]](#)
44. Paludo, C.R.; Pishchany, G.; Andrade-Dominguez, A.; Silva-Junior, E.A.; Menezes, C.; Nascimento, F.S.; Currie, C.R.; Kolter, R.; Clardy, J.; Pupo, M.T. Microbial Community Modulates Growth of Symbiotic Fungus Required for Stingless Bee Metamorphosis. *PLoS ONE* **2019**, *14*, e0219696. [\[CrossRef\]](#) [\[PubMed\]](#)
45. Zhai, M.M.; Li, J.; Jiang, C.X.; Shi, Y.P.; Di, D.L.; Crews, P.; Wu, Q.X. The Bioactive Secondary Metabolites from *Talaromyces* Species. *Nat. Prod. Bioprospect* **2016**, *6*, 1–24. [\[CrossRef\]](#)
46. Rodríguez-Andrade, E.; Stchigel, A.M.; Terrab, A.; Guarro, J.; Cano-Lira, J.F. Diversity of Xerotolerant and Xerophilic Fungi in Honey. *IMA Fungus* **2019**, *10*, 20. [\[CrossRef\]](#)
47. Sandeepani, H.P.; Ratnaweera, P.B. Antibacterial Activity of Entomopathogenic Fungi Isolated from *Vespa Affinis* and *Apis Dorsata* in Sri Lanka. In Proceedings of the International Conference on Frontiers in Chemical Technology 2020, Colombo, Sri Lanka, 20–22 July 2020.
48. Barbosa, R.N.; Bezerra, J.D.P.; Souza-Motta, C.M.; Frisvad, J.C.; Samson, R.A.; Oliveira, N.T.; Houbaken, J. New *Penicillium* and *Talaromyces* Species from Honey, Pollen and Nests of Stingless Bees. *Antonie van Leeuwenhoek, Int. J. Gen. Mol. Microbiol.* **2018**, *111*, 1883–1912. [\[CrossRef\]](#)
49. Lan, D.; Wu, B. Chemistry and Bioactivities of Secondary Metabolites from the Genus *Talaromyces*. *Chem. Biodivers.* **2020**, *17*, e2000229. [\[CrossRef\]](#)
50. Yilmaz, N.; Houbaken, J.; Hoekstra, E.S.; Frisvad, J.C.; Visagie, C.M.; Samson, R.A. Delimitation and Characterisation of *Talaromyces Purpurogenus* and Related Species. *Persoonia Mol. Phylogeny Evol. Fungi* **2012**, *29*, 39–54. [\[CrossRef\]](#)
51. Matsunaga, H.; Kamisuki, S.; Kaneko, M.; Yamaguchi, Y.; Takeuchi, T.; Watashi, K.; Sugawara, F. Isolation and Structure of Vanitaracin A, a Novel Anti-Hepatitis B Virus Compound from *Talaromyces* Sp. *Bioorganic Med. Chem. Lett.* **2015**, *25*, 4325–4328. [\[CrossRef\]](#)
52. Olivier, V.; Blanchard, P.; Chaouch, S.; Lallemand, P.; Schurr, F.; Celle, O.; Dubois, E.; Tordo, N.; Thiéry, R.; Houlgatte, R.; et al. Molecular Characterisation and Phylogenetic Analysis of Chronic Bee Paralysis Virus, a Honey Bee Virus. *Virus Res.* **2008**, *132*, 59–68. [\[CrossRef\]](#) [\[PubMed\]](#)
53. Bailey, L.; Gibbs, A.J.; Woods, R.D. Two Viruses from Adult Honey Bees (*Apis Mellifera* Linnaeus). *Virology* **1963**, *21*, 390–395. [\[CrossRef\]](#) [\[PubMed\]](#)
54. Bailey, L. The Occurrence of Chronic and Acute Bee Paralysis Viruses in Bees Outside Britain. *J. Invertebr. Pathol.* **1965**, *7*, 167–169. [\[CrossRef\]](#) [\[PubMed\]](#)
55. Bailey, L. Paralysis of the Honey Bee, *Apis Mellifera* Linnaeus. *J. Invertebr. Pathol.* **1965**, *7*, 132–140. [\[CrossRef\]](#)
56. Seitz, K.; Buczolic, K.; Dikunová, A.; Plevka, P.; Power, K.; Rümenapf, T.; Lamp, B. A Molecular Clone of Chronic Bee Paralysis Virus (CBPV) Causes Mortality in Honey Bee Pupae (*Apis Mellifera*). *Sci. Rep.* **2019**, *9*, 16274. [\[CrossRef\]](#)
57. Lawson, J.S.; Syme, H.M.; Wheeler-Jones, C.P.D.; Elliott, J. Characterisation of Crandell-Rees Feline Kidney (CRFK) Cells as Mesenchymal in Phenotype. *Res. Vet. Sci.* **2019**, *127*, 99–102. [\[CrossRef\]](#)
58. Marner, M.; Hartwig, C.; Patras, M.A.; Wodi, S.I.M.; Rieuwpassa, F.J.; Ijong, F.G.; Balansa, W. Sustainable Low-Volume Analysis of Environmental Samples by Semi-Automated Prioritization of Extracts for Natural Product Research (SeaPEPR). *Mar. Drugs* **2020**, *18*, 649. [\[CrossRef\]](#)
59. Chambers, M.C.; Maclean, B.; Burke, R.; Amodei, D.; Ruderman, D.L.; Neumann, S.; Gatto, L.; Fischer, B.; Pratt, B.; Egertson, J.; et al. A Cross-Platform Toolkit for Mass Spectrometry and Proteomics. *Nat. Biotechnol.* **2012**, *30*, 918–920. [\[CrossRef\]](#)
60. Yang, B.; Peng, G.; Li, T.; Kadowaki, T. Molecular and Phylogenetic Characterization of Honey Bee Viruses, Nosema Microsporidia, Protozoan Parasites, and Parasitic Mites in China. *Ecol. Evol.* **2013**, *3*, 298–311. [\[CrossRef\]](#)
61. Allen, F.; Greiner, R.; Wishart, D. Competitive Fragmentation Modeling of ESI-MS/MS Spectra for Putative Metabolite Identification. *Metabolomics* **2015**, *11*, 98–110. [\[CrossRef\]](#)
62. Laatsch, H. *AntiBase: The Natural Compound Identifier*; Wiley: New York, NY, USA, 2017.

63. Shannon, P.; Markiel, A.; Ozier, O.; Baliga, N.S.; Wang, J.T.; Ramage, D.; Amin, N.; Schwikowski, B.; Ideker, T. Cytoscape: A Software Environment for Integrated Models of Biomolecular Interaction Networks. *Genome Res.* **2003**, *13*, 2498–2504. [[CrossRef](#)] [[PubMed](#)]
64. Kraus, A.A.; Priemer, C.; Heider, H.; Krüger, D.H.; Ulrich, R. Inactivation of Hantaan Virus-Containing Samples for Subsequent Investigations Outside Biosafety Level 3 Facilities. *Intervirology* **2005**, *48*, 255–261. [[CrossRef](#)] [[PubMed](#)]
65. Sumner, L.W.; Amberg, A.; Barrett, D.; Beale, M.H.; Beger, R.; Daykin, C.A.; Fan, T.W.-M.; Fiehn, O.; Goodacre, R.; Griffin, J.L.; et al. Proposed Minimum Reporting Standards for Chemical Analysis. *Metabolomics* **2007**, *3*, 211–221. [[CrossRef](#)] [[PubMed](#)]
66. Hristov, P.; Shumkova, R.; Palova, N.; Neov, B. Factors Associated with Honey Bee Colony Losses: A Mini-Review. *Vet. Sci.* **2020**, *7*, 166. [[CrossRef](#)]
67. Goulson, D.; Nicholls, E.; Botías, C.; Rotheray, E.L. Bee Declines Driven by Combined Stress from Parasites, Pesticides, and Lack of Flowers. *Science* **2015**, *347*, 1255957. [[CrossRef](#)]
68. Nicoletti, R. Talaromyces–Insect Relationships. *Microorganisms* **2022**, *10*, 45. [[CrossRef](#)]
69. Nonaka, K.; Chiba, T.; Suga, T.; Asami, Y.; Iwatsuki, M.; Masuma, R.; Omura, S.; Shiomi, K. Coculnol, a New Penicillic Acid Produced by a Coculture of *Fusarium Solani* FKI-6853 and *Talaromyces* Sp. FKA-65. *J. Antibiot.* **2015**, *68*, 530–532. [[CrossRef](#)]
70. Yue, Y.; Jiang, M.; Hu, H.; Wu, J.; Sun, H.; Jin, H.; Hou, T.; Tao, K. Isolation, Identification and Insecticidal Activity of the Secondary Metabolites of *Talaromyces Purpureogenus* BS5. *J. Fungi* **2022**, *8*, 288. [[CrossRef](#)]
71. Kostić, A.; Milinčić, D.D.; Petrović, T.S.; Krnjaja, V.S.; Stanojević, S.P.; Barać, M.B.; Tešić, Ž.L.; Pešić, M.B. Mycotoxins and Mycotoxin Producing Fungi in Pollen: Review. *Toxins* **2019**, *11*, 64. [[CrossRef](#)]
72. Beuchat, L.R. Influence of Water Activity on Growth, Metabolic Activities and Survival of Yeasts and Molds. *J. Food Prot.* **1983**, *46*, 135–141. [[CrossRef](#)]
73. Mannaa, M.; Kim, K.D. Influence of Temperature and Water Activity on Deleterious Fungi and Mycotoxin Production during Grain Storage. *Mycobiology* **2017**, *45*, 240–254. [[CrossRef](#)] [[PubMed](#)]
74. Feofilova, E.P.; Ivashechkin, A.A.; Alekhin, A.I.; Sergeeva, Y.E. Fungal Spores: Dormancy, Germination, Chemical Composition, and Role in Biotechnology (Review). *Appl. Biochem. Microbiol.* **2012**, *48*, 1–11. [[CrossRef](#)]
75. Moore, D.; Robson, G.D.; Trinci, A.P.J. 4.2 Spore Germination and Dormancy E. In *21st Century Guidebook to Fungi*, 2nd ed.; Cambridge University Press: Cambridge, UK, 2020.

**Disclaimer/Publisher’s Note:** The statements, opinions and data contained in all publications are solely those of the individual author(s) and contributor(s) and not of MDPI and/or the editor(s). MDPI and/or the editor(s) disclaim responsibility for any injury to people or property resulting from any ideas, methods, instructions or products referred to in the content.