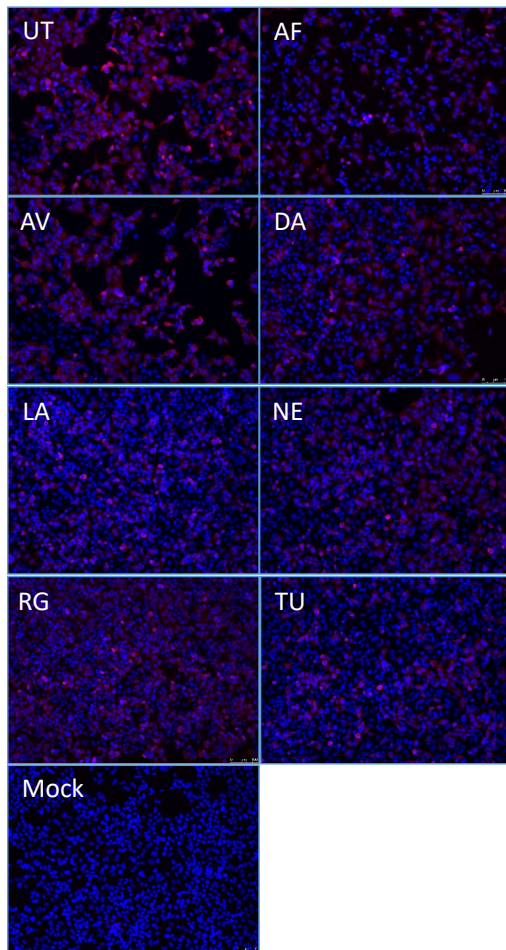
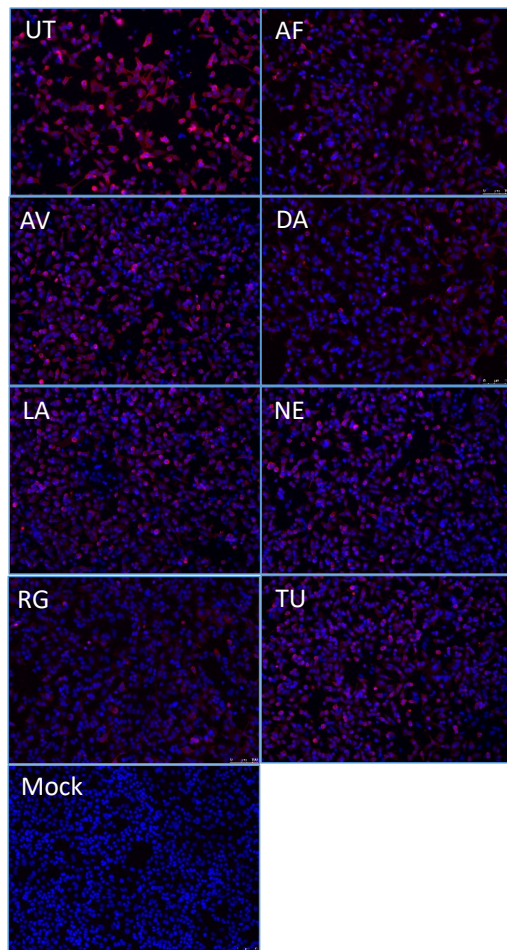


Supplemental Figure S2: Effect of Selected SMKI treatment on NL09 and NL11 infections. Related to Fig. 1B. A549 cells were infected with NL09 or NL11 at MOI=1 and incubated for 72h +/- indicated SMKIs at [0.25x, 0.5x or 1x]_{max} concentrations. At 24, 48, and 72 hpi, supernatants were collected, and viral titers quantified by TCID₅₀/ml assay (n = 4). Means ± SD are shown. *, P<0.05; **, P<0.01; ***, P<0.001; ****, P<0.0001; ns, not significant (P>0.05).

NL09 (pH1N1)



NL11 (H3N2)



Supplemental Figure S3. Immunofluorescent detection of SMKIs' effects on cell viability and infectivity during infection. Related to Fig. 1C and 1D. A549 cells were infected with NL09 or NL11 at MOI=1 +/- indicated SMKIs at $[0.5x]_{\max}$ concentration for 48h. Fluorescence microscopy pictures were captured using a Leica DMI8 fluorescence microscope (representative field shown from an n=4/condition). Virus- infected cells were detected by anti-IAV NP antibody (red), and nuclei were detected using NucBlue Live ReadyProbes (blue).