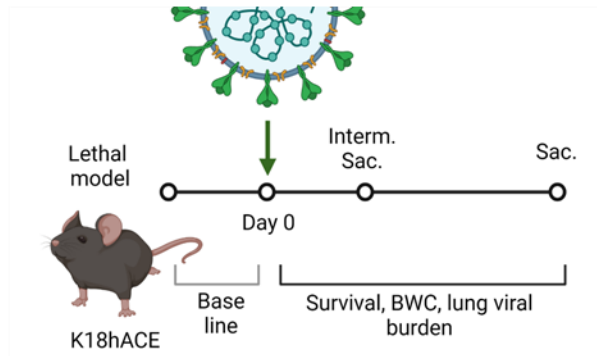
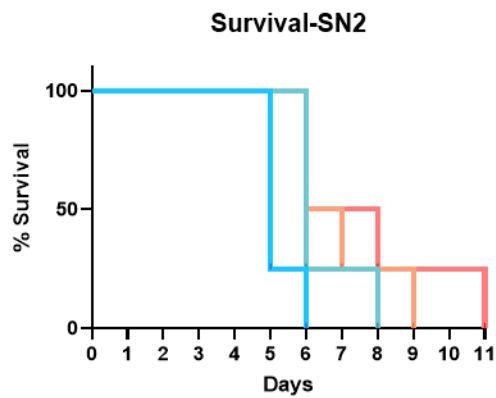


[A]



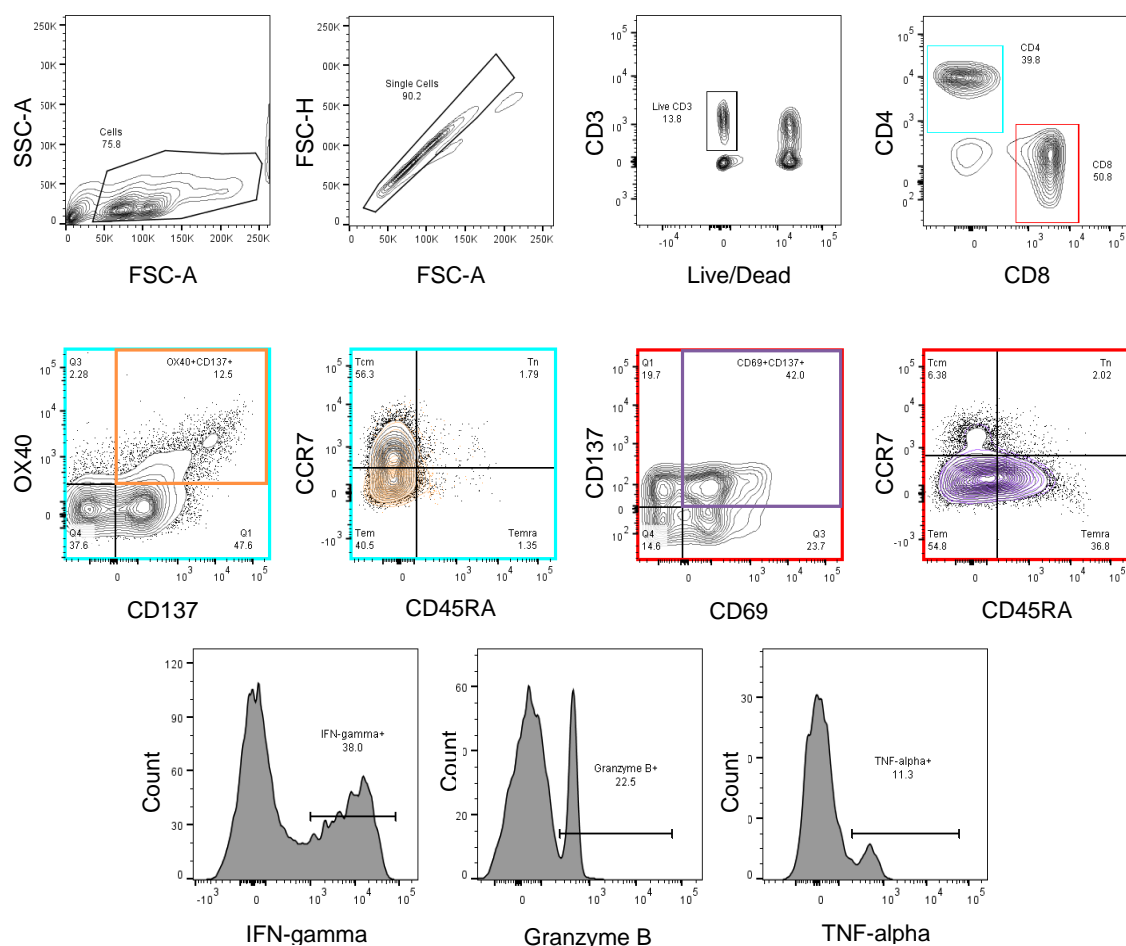
[B]



[C]



Supplemental Figure S1. Survival in K18-human angiotensin-converting enzyme 2 (hACE2) transgenic mice. (A) Experimental Design in mice (n = 6) infected intranasally with four (4) 10-fold serial dilutions of B.1.617.2/Delta SARS-CoV-2. Survival (B) and Body weight Loss (C) were monitored daily for 11 dpi.



Supplemental Figure S2. Flow Cytometry Gating Strategy for AIM assay, memory phenotyping, and cytokine production. Representative graphs illustrating gating strategy used in flow cytometry-based assays to define antigen-specific CD4⁺ (outlined in blue) and CD8⁺ (outlined in red) T cells by the expression of OX40⁺CD137⁺ and CD69⁺CD137⁺, respectively. The memory compartment was analyzed by gating naïve (Tn; CD45RA⁺CCR7⁺), central memory (Tcm; CD45RA⁺CCR7⁺), effector memory (Tem; CD45RA⁺CCR7⁻), and terminally differentiated effector memory (Temra; CD45RA⁺CCR7⁻) cells on bulk CD4⁺ and CD8⁺ T cells as well as AIM⁺ subsets, overlaid in orange and purple, respectively. Cytokine production was analyzed from both CD4⁺AIM⁺ and CD8⁺AIM⁺ T cells.