

Supplementary Materials

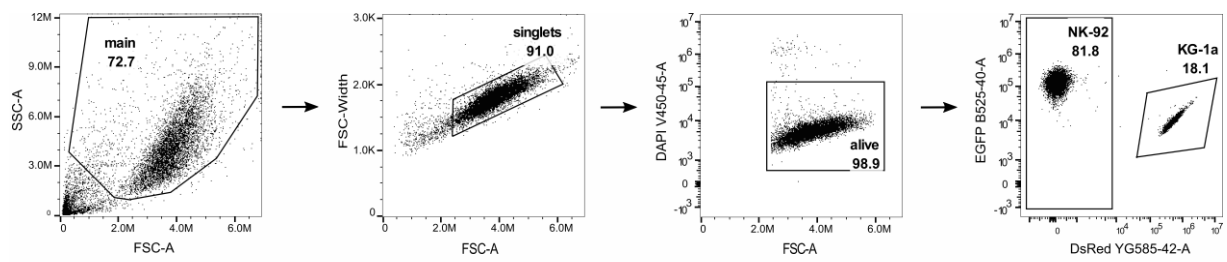


Figure S1. Representative dot plots showing a typical co-culture experiment. Cell populations were gated for singlets and vital cells were gated based upon the DAPI (4',6-diamidino-2-phenylindole) negative sub-population according to cells that were killed by heating (90 °C, 5 minutes). NK-92 cells and KG-1a cells were separated based on EGFP and DsRed expression, respectively.