

Figure S1. Size-Exclusion Chromatography Profiles of Trimer and Nanoparticle Immunogens. Soluble gp140 trimer immunogens were purified on a Superdex 200 Increase 10/300 GL, and nanoparticle immunogens were purified on 16/60 Sephacryl s500 or Superose 6 columns. Dashed lines denote selected fractions.

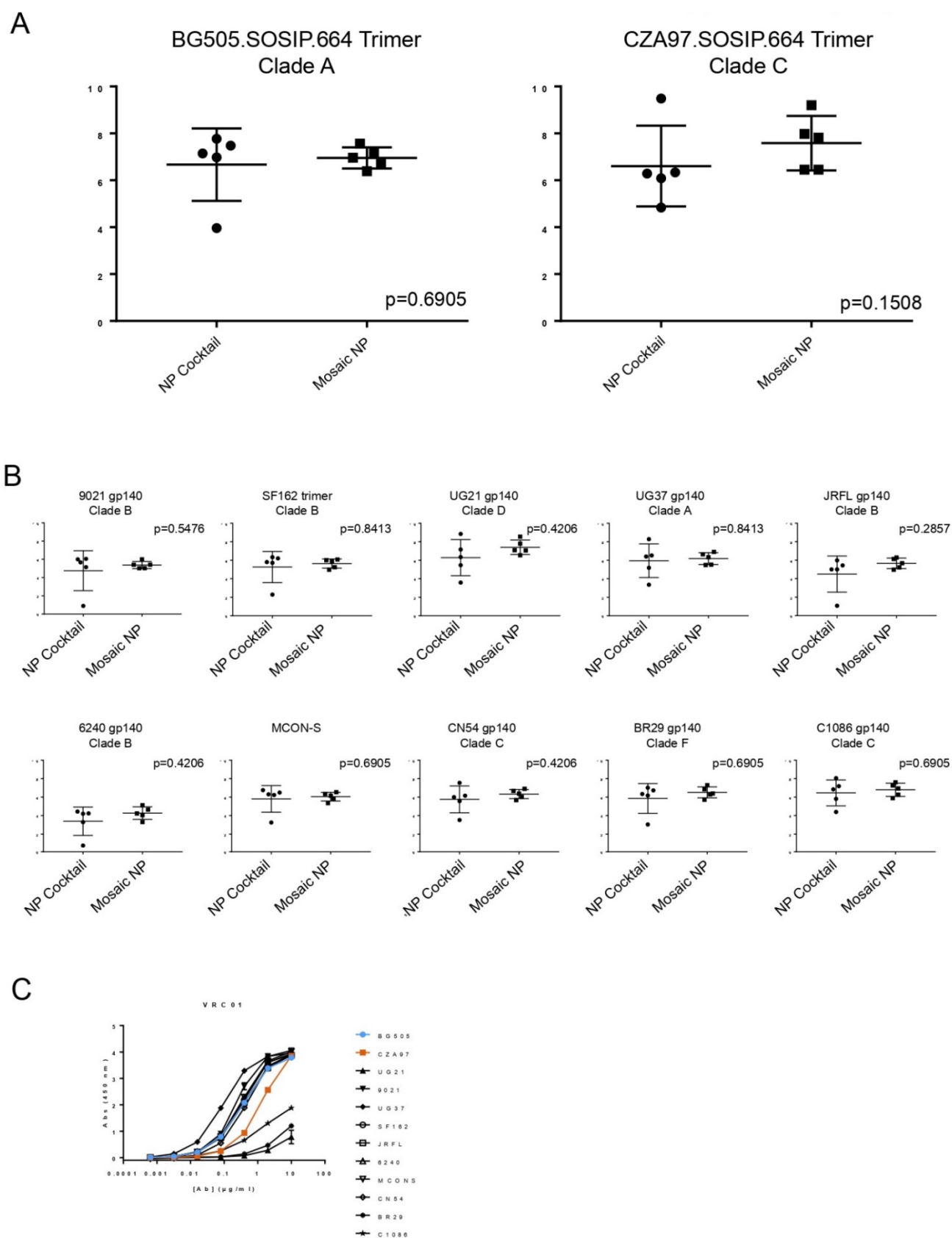


Figure S2. Comparison of AUC values from ELISA Binding Curves of Guinea Pig Serum Against HIV-1 Env Proteins. (A) AUC values for vaccine-matched Env trimers plotted from ELISA binding curves in Figure 4B. (B) AUC values for gp140 Env proteins plotted from ELISA binding curves in Figure 4C. Reported are arithmetic mean and SD p-values from Mann-Whitney U tests. (C) Binding for positive control antibody VRC01 against HIV-1 antigens.