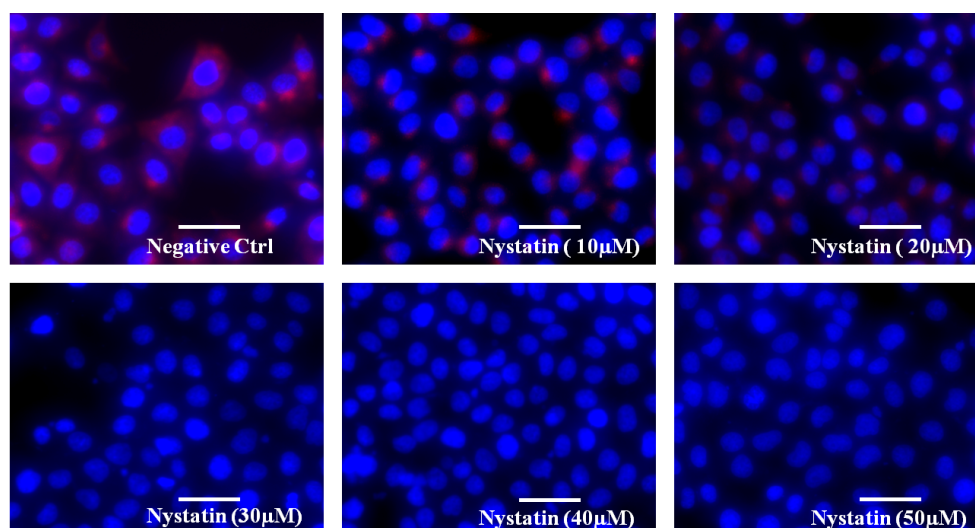


Supplementary Figures



S1. CTB uptake was inhibited by nystatin. HeLa cells were treated with nystatin for 1 h and then incubated with 20 $\mu\text{g}/\text{ml}$ Alexa Fluor 555-labeled CTB for 30 min at 37 $^{\circ}\text{C}$, noninternalized CTB-AF555 were removed by washing with 0.1 M glycine, 0.1 M NaCl at pH 3.0 and then washing with cold PBS for three times. Cells were fixed and DAPI stained. Scale bar = 50 μm .