

Supplementary Materials

Susceptibility of Four Abalone Species, *Haliotis gigantea*, *Haliotis discus discus*, *Haliotis discus hannai* and *Haliotis diversicolor*, to Abalone asfa-like Virus

Table S1. Cloning primers.

Primer Name	Forward Primer (5'–3') *	Primer Name	Reverse Primer (5'–3') *
MCP-F	gagggatccgaattcATGGCGGCAGGAG-GACCCTTC	MCP-R	ttaagcagagattacTTATGCAGCATATCGCAAGA-TAG
PRV-F	gagggatccgaattcATGTACAGAT-TTACCCAGGAAG	PRV-R	ttaagcagagattacTTAGAGTATGATTGG-GAAGTCC

*: Lower case letters indicate In-Fusion cloning sequence. Upper case letters indicate gene-specific sequence.

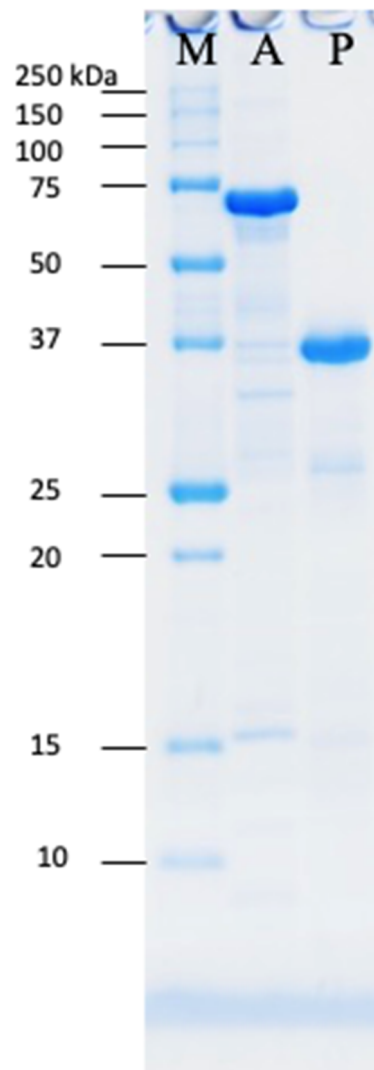


Figure S1. Electrophoretic image of purified His-tagged recombinant protein. M: molecular marker, A: AbALV MCP, P: PRV-2 σ 1.