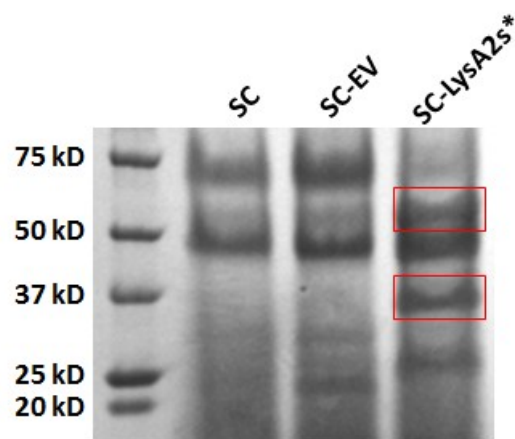


**Figure S1.** Constructed vector maps for LysA2 expression in this study.



**Figure S2.** The LysA2 secretion by integrated *LysA2* gene into *S. cerevisiae*. Secreted LysA2 from *S. cerevisiae* D452-2. Unlike secreted LysA2 from *P. pastoris*, glycosylation was not observed.