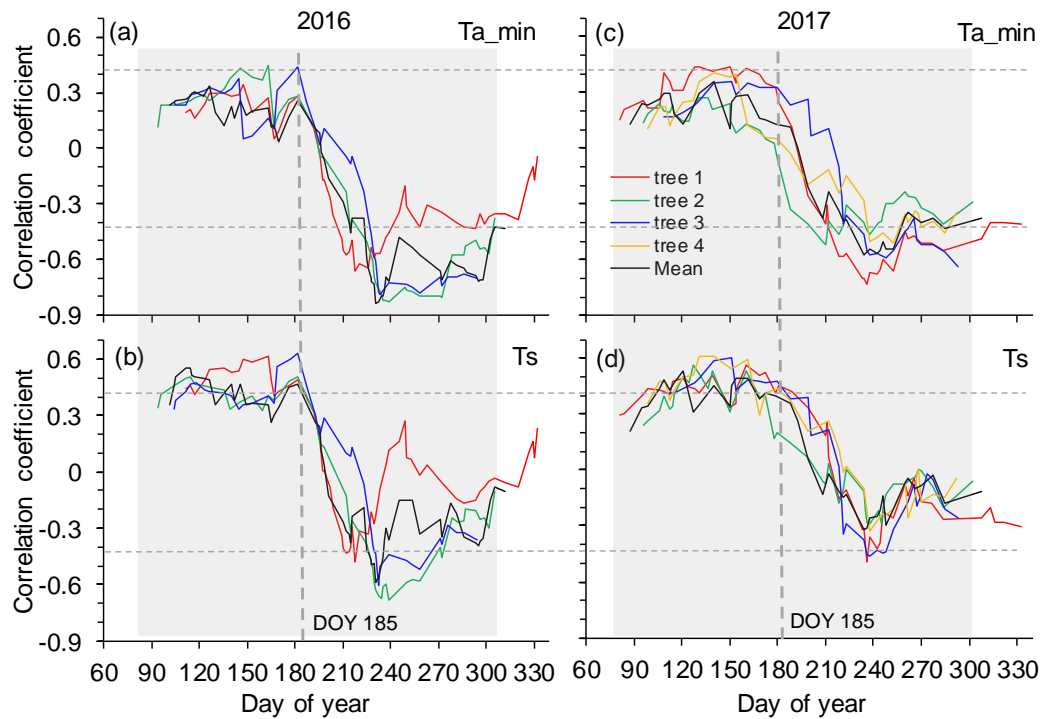


1 **Supplementary material: Figure S1**

2



3

4

5 **Figure S1** Moving correlations (21 days window) between stem increments and

6 minimum air (a, c) and soil (b, d) temperatures during the growing seasons in 2016 and

7 2017. Spearman correlations were calculated for relationships between stem increments

8 and temperature variables. Horizontal thin dashed lines indicate the significant level at

9 $P = 0.05$. Vertical thick dashed lines indicate the timing of shifts in the correlations

10 between stem increments and temperature variables. The shaded regions indicate the

11 growing seasons.

12