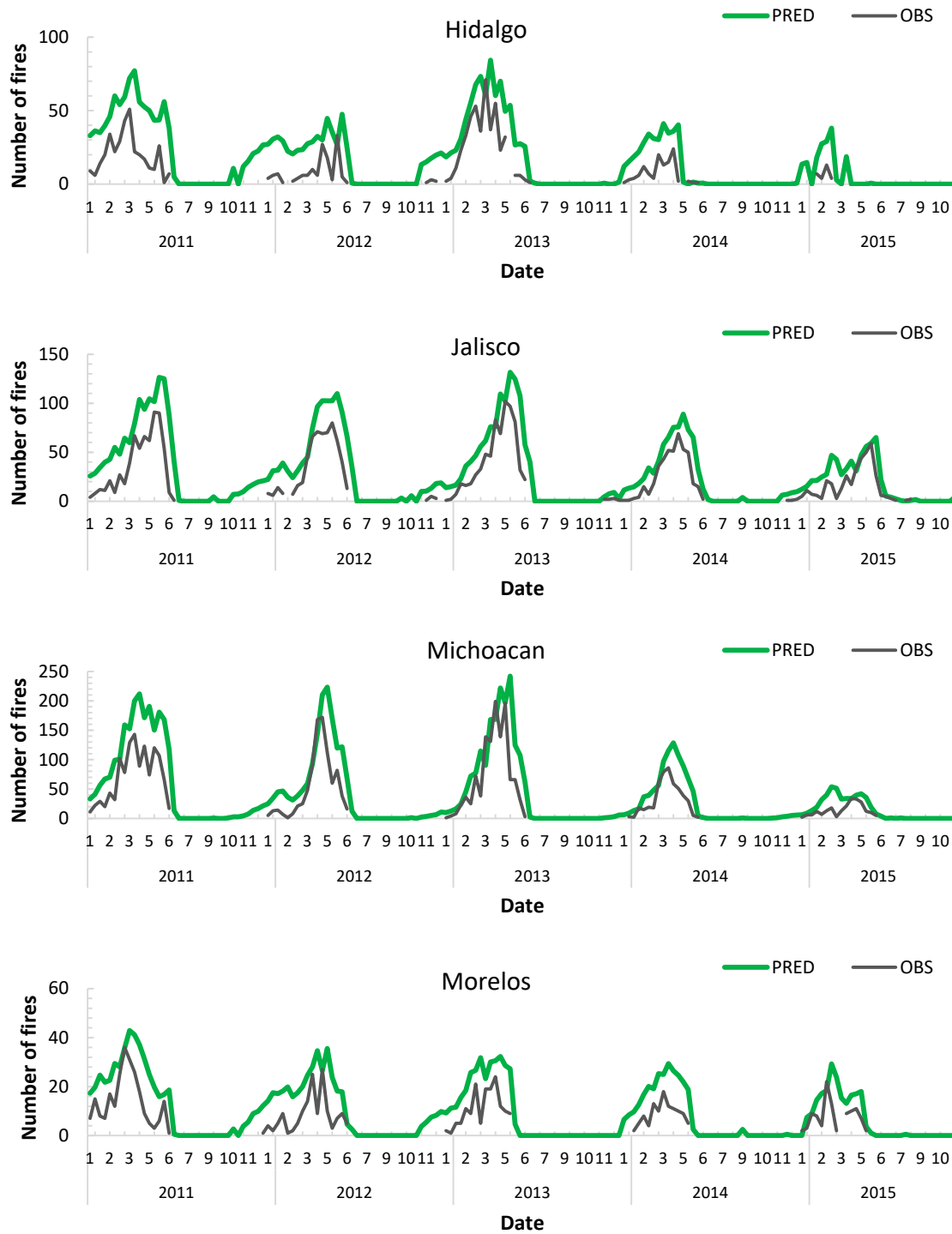
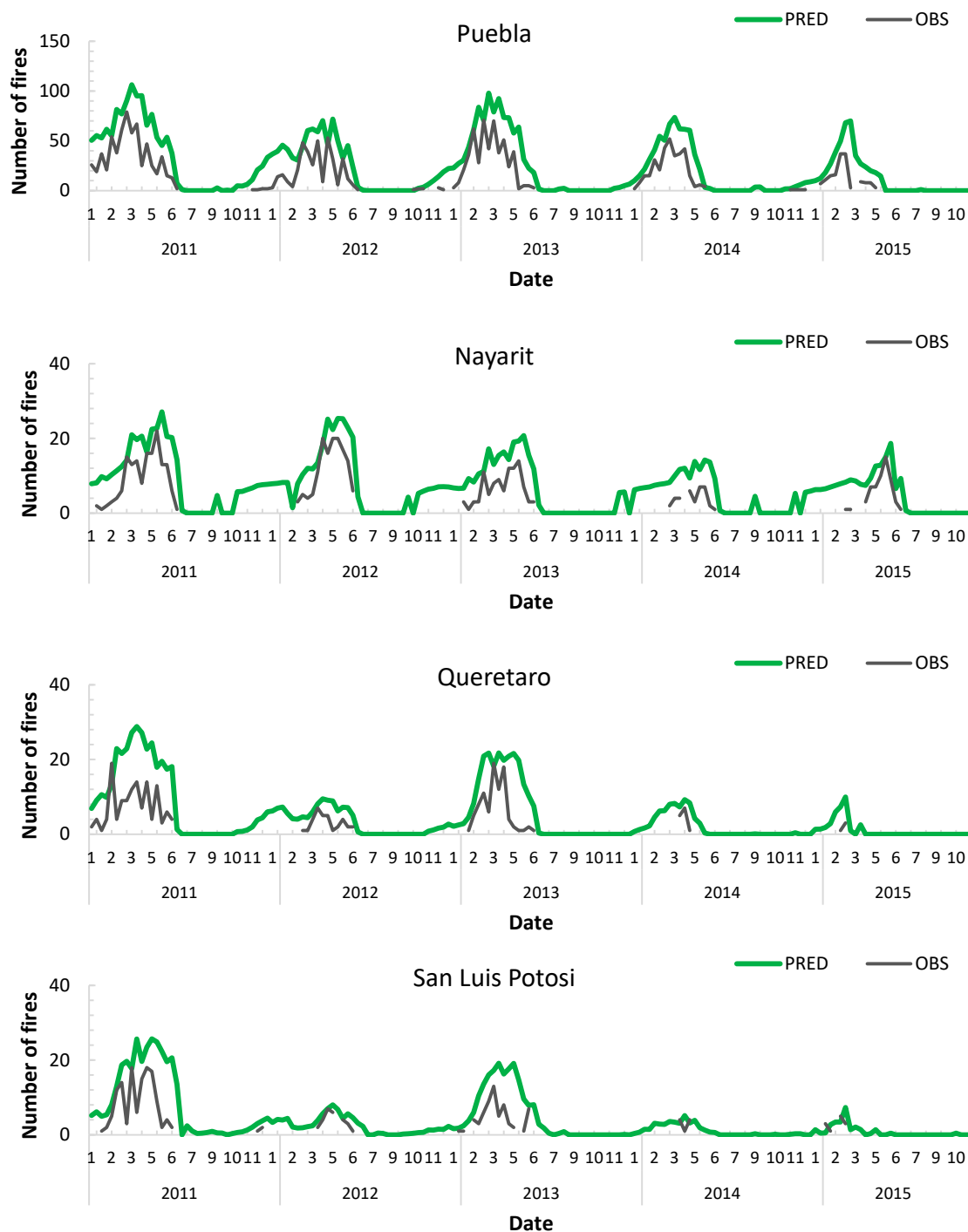


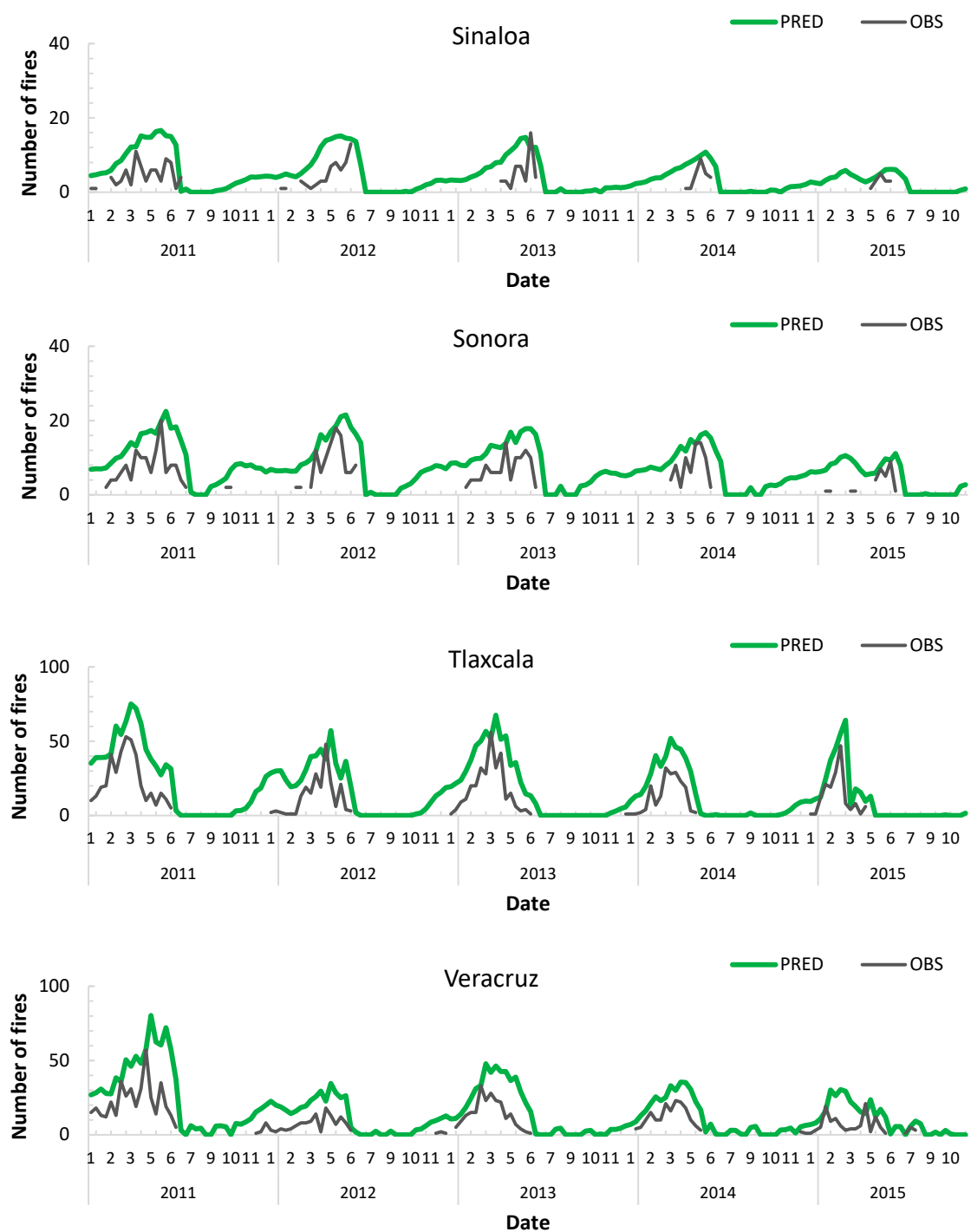
Supplementary Figure S1. Observed and predicted number of fires per dekade for the states of Chiapas, Ciudad de Mexico, Durango and Guerrero. Where: PRED: predicted with models from table 1; OBS: observed.



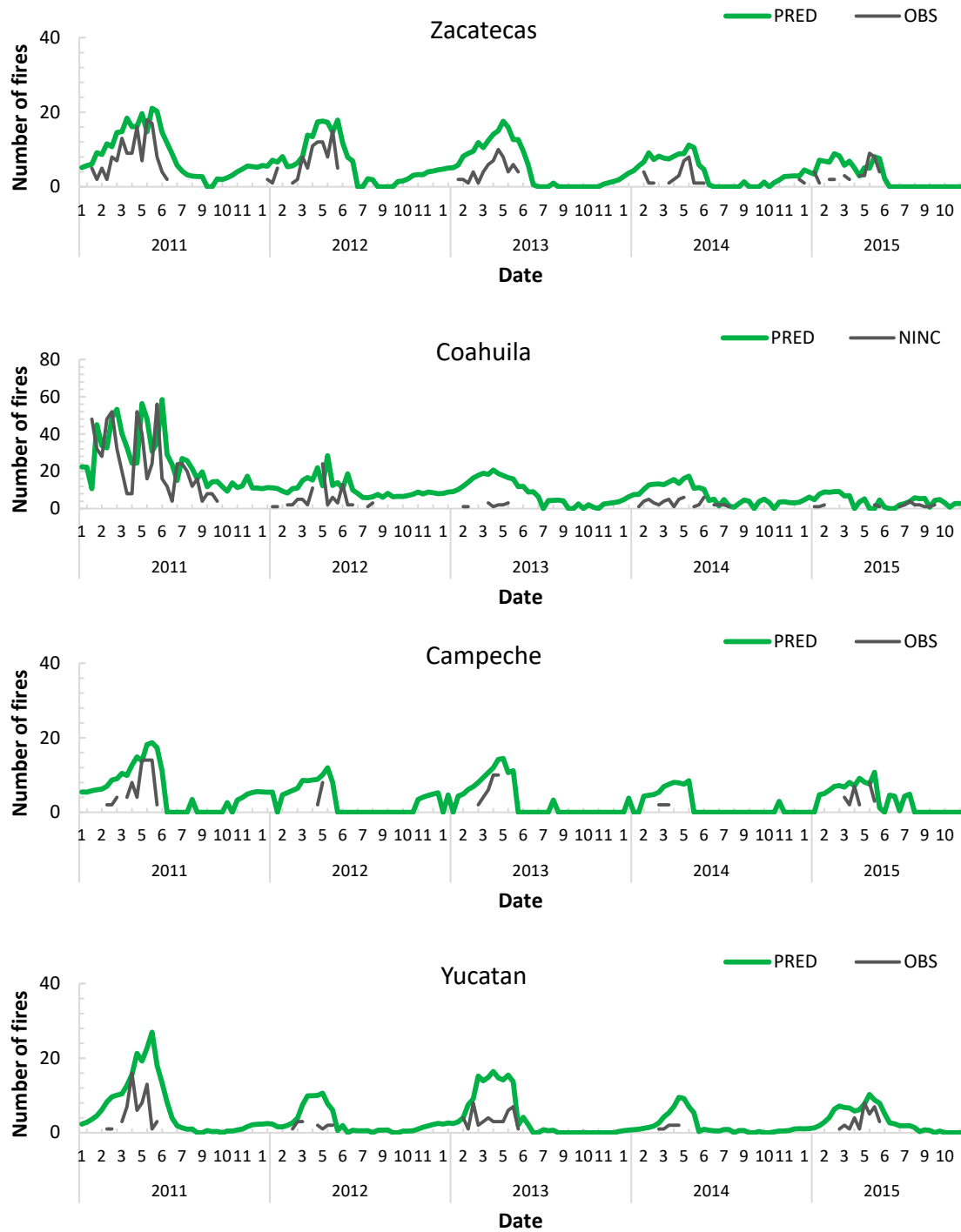
Supplementary Figure S2. Observed and predicted number of fires per dekad for the states of Hidalgo, Jalisco, Michoacan and Morelos. Where: PRED: predicted with models from table 1; OBS: observed.



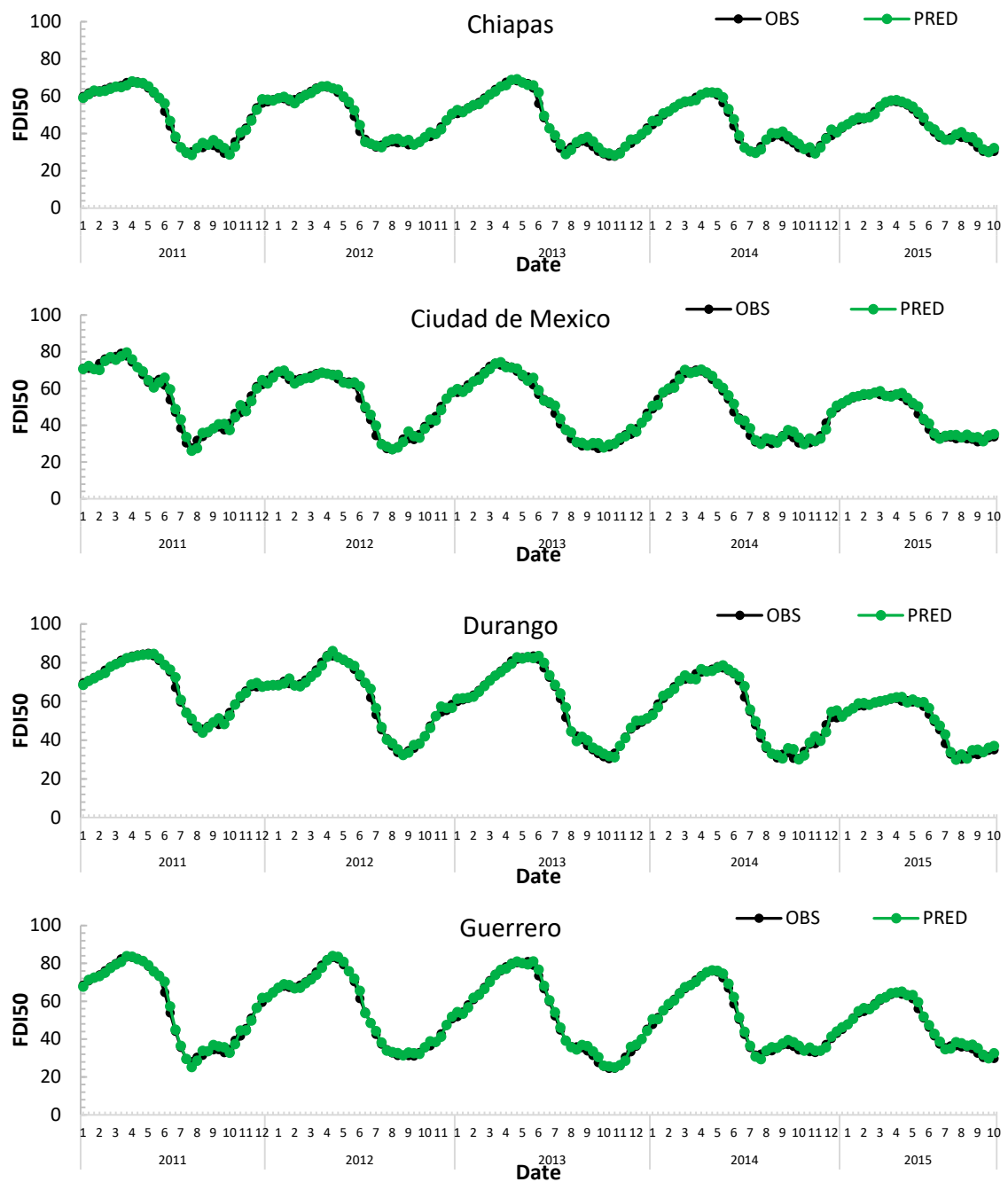
Supplementary Figure S3. Observed and predicted number of fires per dekade for the states of Puebla, Nayarit, Queretaro and San Luis Potosi. Where: PRED: predicted with models from table 1; OBS: observed.



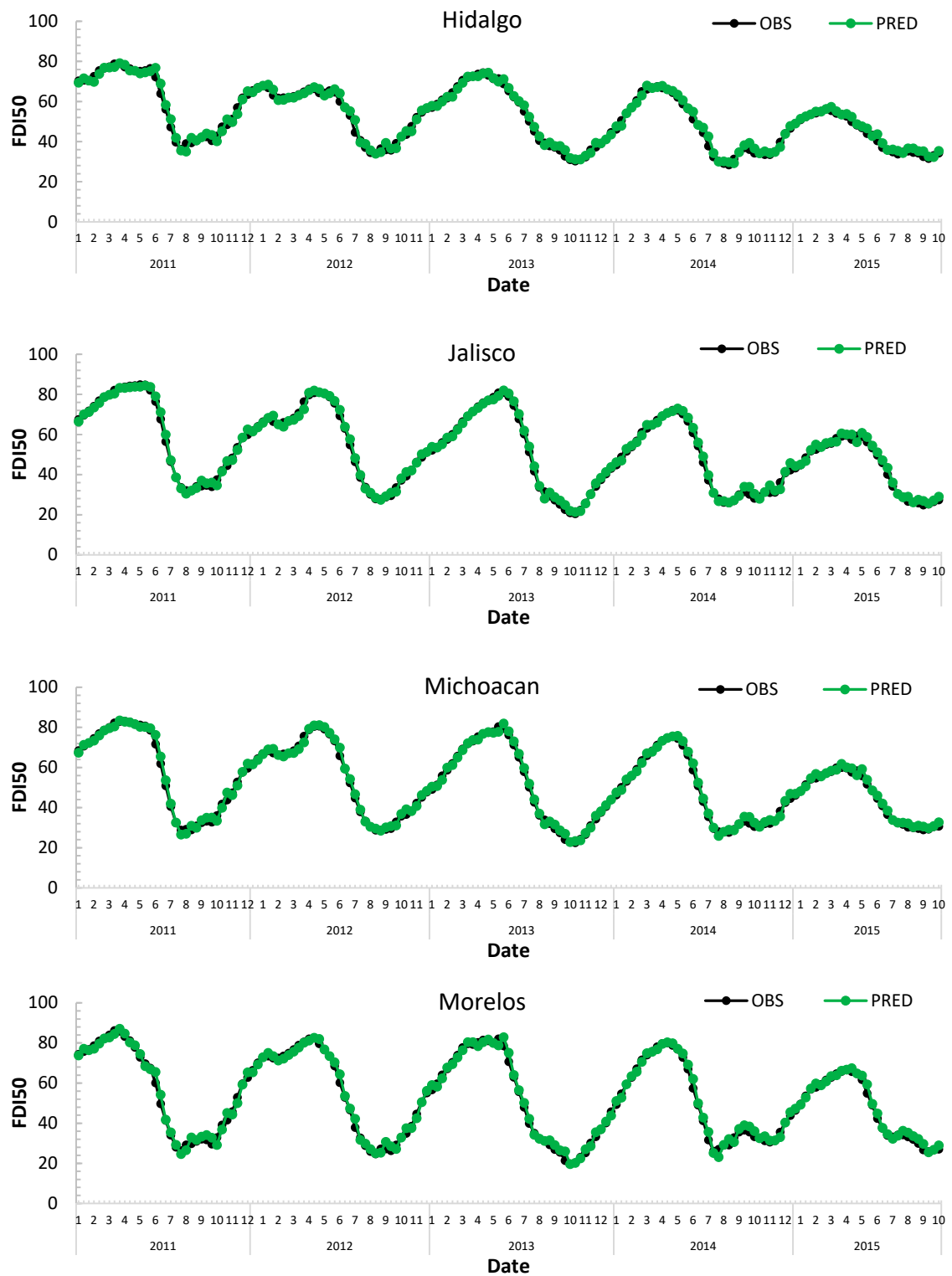
Supplementary Figure S4. Observed and predicted number of fires per decade for the states of Sinaloa, Sonora, Tlaxcala, and Veracruz. Where: PRED: predicted with models from table 1; OBS: observed.



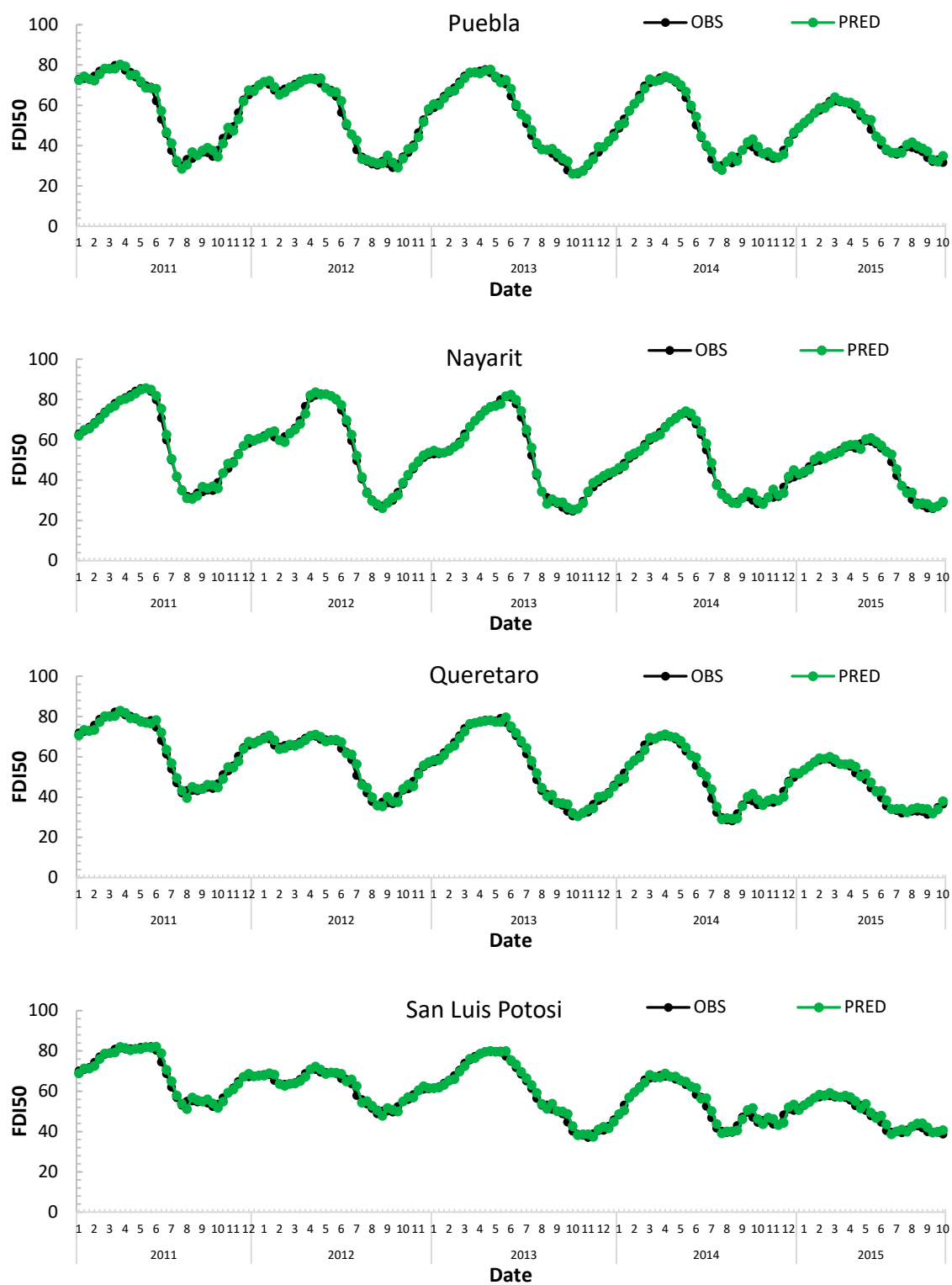
Supplementary Figure S5. Observed and predicted number of fires per decade for the states of Zacatecas, Coahuila, Campeche and Yucatan. Where: PRED: predicted with models from table 1; OBS: observed.



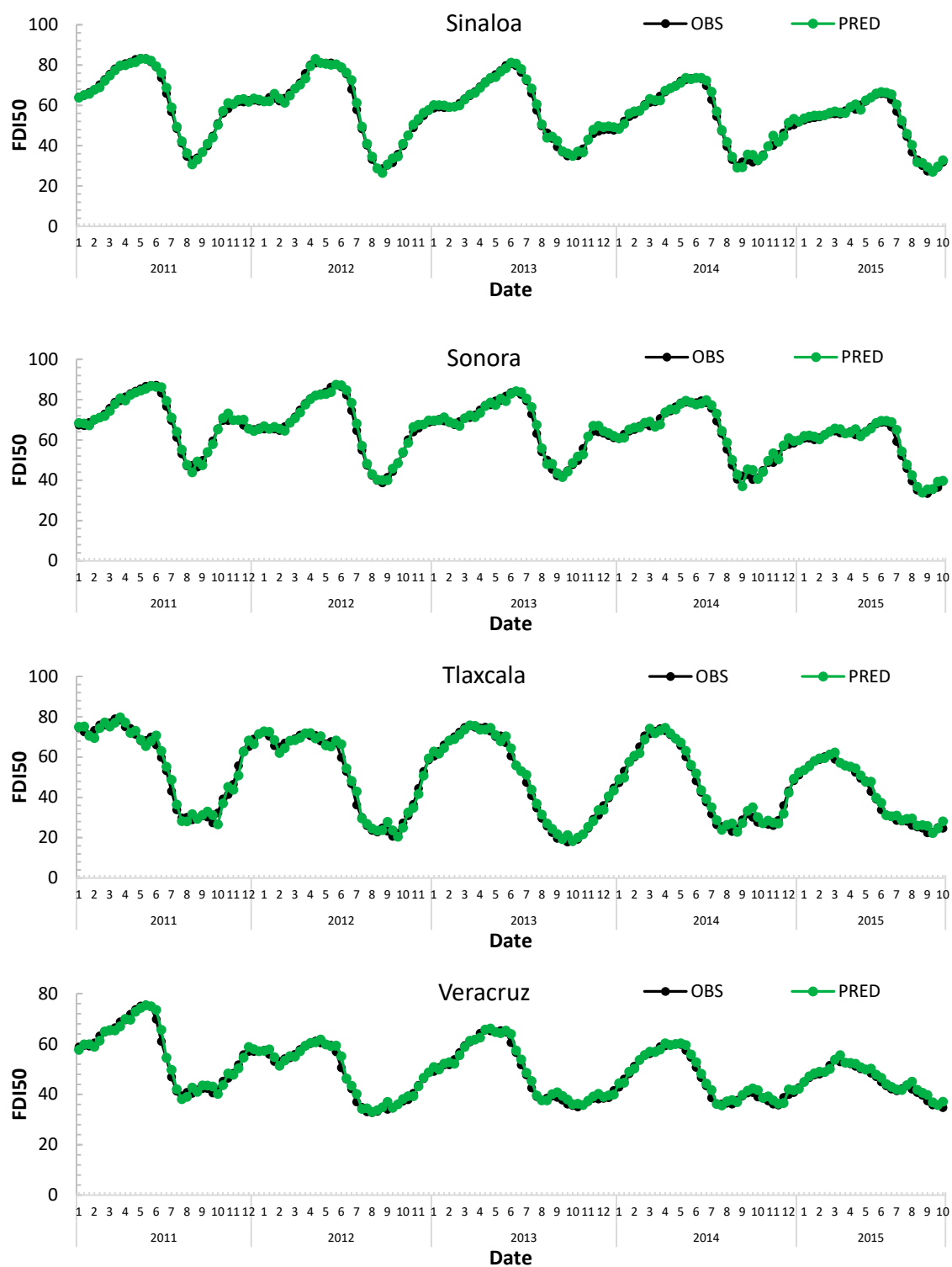
Supplementary Figure S6. Observed and predicted accumulated fuel dryness FDI50 for the states of Chiapas, Ciudad de Mexico, Durango and Guerrero. Where: PRED: predicted with models from table 2; OBS: observed.



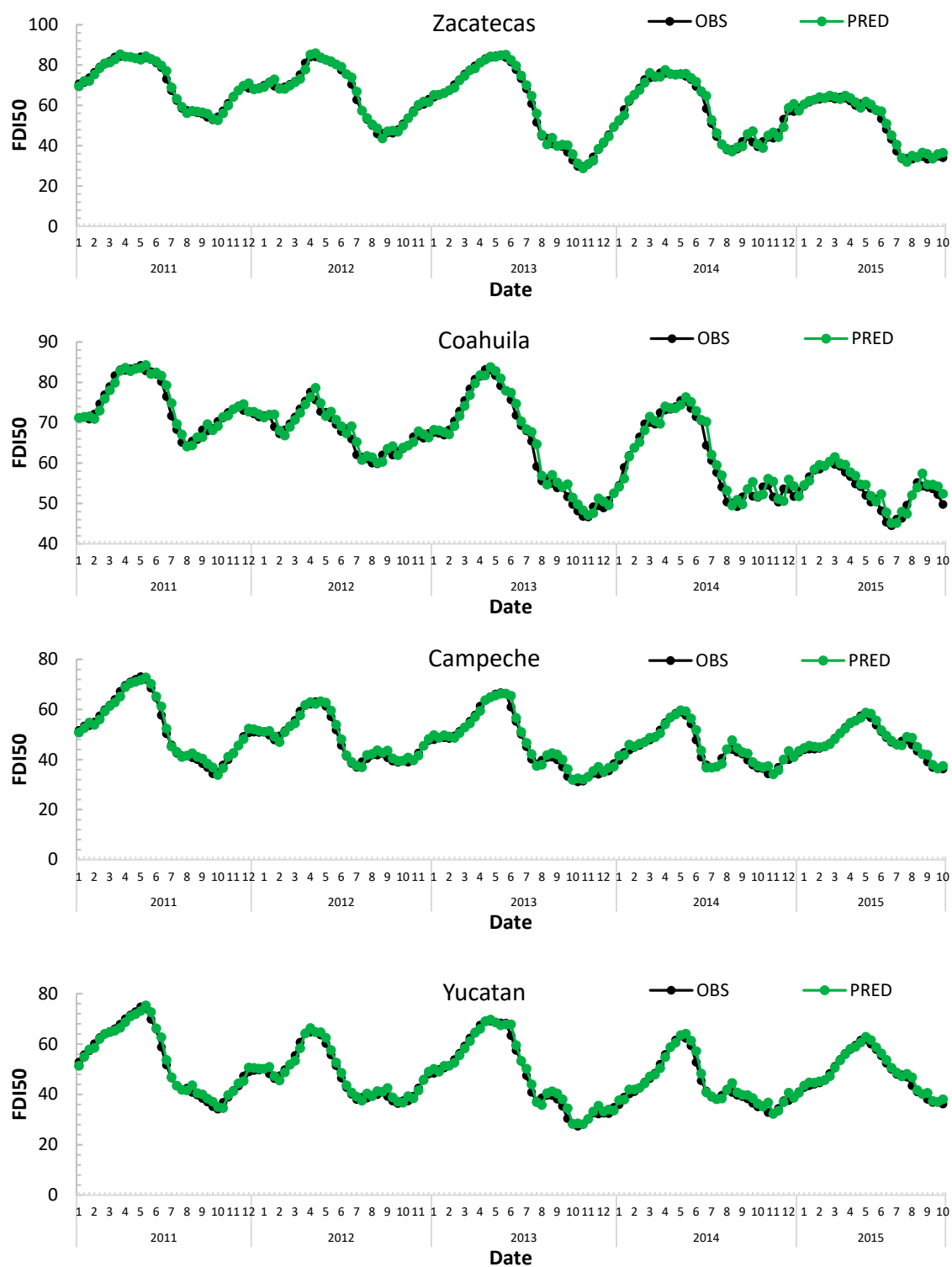
Supplementary Figure S7. Observed and predicted accumulated fuel dryness FDI50 for the states of Hidalgo, Jalisco, Michoacan and Morelos. Where: PRED: predicted with models from table 2; OBS: observed.



Supplementary Figure S8. Observed and predicted accumulated fuel dryness FDI50 for the states of Puebla, Nayarit, Queretaro and San Luis Potosi. Where: PRED: predicted with models from table 2; OBS: observed.



Supplementary Figure S9. Observed and predicted accumulated fuel dryness FDI50 for the states of Sinaloa, Sonora, Tlaxcala, and Veracruz. Where: PRED: predicted with models from table 2; OBS: observed.



Supplementary Figure S10. Observed and predicted accumulated fuel dryness FDI50 for the states of Zacatecas, Coahuila, Campeche and Yucatan. Where: PRED: predicted with models from table 2; OBS: observed.