

Supplementary Tables

**Table S1.** Geographic location of the 80 populations of six *Pinus* spp. and results of diversity and divergence indexes calculated using GenAlEx 6.501 (criterion 1).

Code	State/Municipality	Latitude	Longitude	Elev. (m)	DGEO	N	PopGD	GD	$v_2$	% Poly	DW
<b>Peripheral populations of <i>P. arizonica</i></b>											
PA-CB	Chih./Temósachi	28°42'40"	-108°15'49"	2499	0.057	35	69.266	64.097	1.303	0.698	0.095
PA-PG	Chih./Temósachi	28°43'51"	-108°17'59"	2629	0.837	35	66.999	57.375	1.278	0.627	0.082
PA-M6	Chih./Madera	29°22'2"	-108°11'31"	2587	2.589	35	71.806	69.318	1.328	0.726	0.104
PA-BC	Chih./Temósachi	28°37'24"	-108°15'54"	2670	2.619	35	69.986	63.452	1.306	0.641	0.080
PA-PUL	Dgo./San Dimas	24°27'09"	-105°54'16"	2533	3.733	35	68.878	55.143	1.266	0.586	0.070
PA-TOR	Dgo./San Dimas	24°27'00"	-105°56'26"	2486	4.257	35	68.784	61.472	1.291	0.671	0.089
PA-MRM	Chih./Madera	29°13'13"	-108°13'11"	2398	4.557	35	68.306	58.750	1.286	0.600	0.067
PA-UA	Chih./Balleza	26°21'38"	-106°20'04"	2675	5.421	35	77.397	75.156	1.352	0.780	0.138
PA-GALL	Chih./Guachochi	26°44'41"	-107°10'06"	2480	5.463	34	76.382	71.321	1.338	0.726	0.128
PA-MU	Chih./Gpe. y Calvo	26°01'39"	-106°02'38"	2669	6.034	35	76.498	77.273	1.363	0.791	0.132
PA-TRI	Dgo./San Dimas	24°19'38"	-105°48'58"	2651	6.299	35	70.858	64.249	1.297	0.756	0.107
PA-EM	Chih./Balleza	26°20'07"	-106°19'34"	2700	6.595	35	76.736	71.882	1.336	0.778	0.139
PA-BI	Chih./Balleza	26°33'44"	-106°25'25"	2684	7.108	35	77.144	76.592	1.363	0.734	0.121
PA-MJ	Chih./Guachochi	26°48'24"	-107°02'19"	2420	9.602	35	70.176	65.190	1.310	0.695	0.088
PA-ENG	Chih./Gpe. y Calvo	26°04'16"	-106°54'26"	2657	11.148	35	86.765	86.360	1.411	0.799	0.127
PA-TE	Chih./Balleza	26°36'55"	-106°32'33"	2760	12.522	35	72.849	69.798	1.329	0.704	0.101
<b>Central populations of <i>P. arizonica</i></b>											
PA-M	Chih./Balleza	26°15'10"	-106°24'10"	2801	16.109	35	69.326	63.576	1.305	0.663	0.078
PA-EN	Chih./Balleza	26°21'29"	-106°24'58"	2721	16.663	35	75.626	70.914	1.332	0.772	0.134
PA-GI	Dgo./Tepehuanes	25°05'57"	-105°51'12"	2569	17.087	35	70.375	65.718	1.314	0.682	0.094
PA-RI	Chih./Gpe. y Calvo	26°02'30"	-106°46'03"	2571	18.695	35	69.056	63.052	1.300	0.693	0.086
PA-TO	Dgo./Guanaceví	26°10'58"	-106°20'28"	3062	18.760	35	66.677	52.027	1.250	0.578	0.064
PA-TG	Dgo./Guanaceví	26°10'50"	-106°21'08"	2913	18.813	35	70.177	65.674	1.314	0.682	0.093
PA-GUA	Dgo./Guanaceví	26°10'37"	-106°20'52"	2956	19.810	35	66.483	56.376	1.267	0.627	0.077
PA-CA-G	Dgo./Guanaceví	26°10'11"	-106°20'54"	2948	20.379	35	80.840	83.755	1.387	0.813	0.157
PA-MO	Chih./Gpe. y Calvo	26°10'23"	-106°38'07"	2724	20.431	38	71.878	69.780	1.327	0.716	0.093
<b>Peripheral populations of <i>P. cembroides</i></b>											
PCE-MA	Chih./Balleza	26°32'18"	-106°28'32"	2588	1.19	35	88.082	71.812	1.339	0.799	0.317
PCE-AD	Dgo./Santiago Papasquiario	24°58'22"	-105°32'41"	2331	1.80	35	91.778	79.842	1.376	0.816	0.372
PCE-MM	Dgo./Guanaceví	26°15'09"	-106°4'12"	2631	7.71	35	90.576	79.267	1.373	0.802	0.318
<b>Central populations of <i>P. cembroides</i></b>											
PCE-CT	Dgo./Guanaceví	26°19'20"	-106°05'03"	2499	13.24	35	90.961	79.039	1.372	0.832	0.359
PCE-PEN	Chih./Balleza	26°57'01"	-106°38'43"	2369	14.95	34	93.638	82.993	1.380	0.866	0.426
<b>Peripheral populations of <i>P. durangensis</i></b>											
PD-PIS	Dgo./San Dimas	24°27'20"	-106°08'08"	2495	1.70	35	74.939	68.461	1.320	0.753	0.123
PD-MC	Chih./Urique	27°13'00"	-107°59'53"	2381	2.35	35	77.992	76.961	1.362	0.778	0.124
PD-JO	Dgo./Santiago Papasquiario	25°00'11"	-106°09'47"	2410	2.77	35	73.383	68.679	1.320	0.723	0.098
PD-SO	Dgo./Santiago Papasquiario	25°00'08"	-106°10'26"	2405	2.79	35	73.538	69.341	1.328	0.712	0.102
PD-O-M	Chih./Madera	29°01'11"	-108°19'54"	2441	2.81	35	74.108	65.469	1.314	0.654	0.094
PD-D	Chih./Madera	29°29'49"	-108°18'58"	2217	3.25	35	74.504	69.361	1.328	0.731	0.121
PD-CQ	Chih./Urique	27°12'18"	-108°00'28"	2444	4.15	34	81.453	78.067	1.367	0.816	0.161
PD-CE	Chih./Balleza	26°15'10"	-106°24'10"	2801	4.43	35	72.220	65.671	1.310	0.720	0.108

PD-MCCI	Dgo./Ocampo	28°10'32"	-108°16'0"	2212	5.75	35	85.924	89.388	1.414	0.873	0.152
PD-PT	Dgo./San Dimas	24°23'09"	-106°02'57"	2438	5.84	35	74.530	65.180	1.307	0.701	0.123
PD-PORR	Chih./Guachochi	26°44'27"	-107°15'12"	2552	6.64	35	79.634	71.284	1.330	0.728	0.126
PD-ME	Dgo./Otáez	24°44'11"	-105°56'43"	2647	6.70	35	72.651	67.358	1.317	0.717	0.106
PD-AN	Chih./Balleza	26°25'18"	-106°31'36"	2768	7.43	35	77.608	71.398	1.334	0.778	0.144
PD-CU	Dgo./San Dimas	24°26'09"	-106°03'05"	2450	8.61	35	70.197	59.748	1.279	0.679	0.092
PD-MH	Chih./Urique	27°25'03"	-107°57'01"	1848	9.48	35	75.663	71.459	1.334	0.761	0.110
PD-PIE	Chih./Madera	29°41'00"	-108°26'36"	2219	9.74	35	73.578	66.655	1.310	0.704	0.088
<b>Central populations of <i>P. durangensis</i></b>											
PD-MP	Dgo./Ocampo	28°13'34"	-108°17'51"	2385	10.26	35	72.443	68.037	1.320	0.701	0.106
PD-PI	Chih./Gpe. y Calvo	26°4'41"	-106°59'21"	2630	11.41	33	81.279	53.201	1.257	0.570	0.051
PD-45	Chih./Temósachi	28°44'19"	-108°16'18"	2635	11.41	35	74.718	69.476	1.325	0.756	0.114
PD-POR	Chih./Guachochi	26°46'42"	-107°15'9"	2578	11.84	35	78.150	78.848	1.367	0.797	0.111
PD-GRA	Chih./Guachochi	26°41'21"	-107°15'20"	2543	11.97	35	72.103	64.007	1.303	0.687	0.085
PD-AG	Chih./Gpe. y Calvo	25°47'16"	-106°41'14"	2595	12.34	35	76.045	72.457	1.342	0.761	0.127
PD-MG	Chih./Madera	29°35'56"	-108°26'12"	2231	15.36	35	74.964	72.850	1.343	0.723	0.118
PD-PA	Chih./Gpe. y Calvo	26°1'13"	-106°54'32"	2381	18.60	35	79.063	71.788	1.339	0.726	0.090
PD-PB	Chih./Gpe. y Calvo	26°5'14"	-106°47'37"	2701	29.53	35	79.165	75.224	1.350	0.810	0.153
PD-PAN	Chih./Guachochi	27°15'37"	-107°27'16"	2516	31.45	35	72.382	60.766	1.289	0.679	0.076
<b>Peripheral populations of <i>P. engelmannii</i></b>											
PE-LJ	Chih./Balleza	26°31'22"	-106°17'41"	2602	0.618	35	71.670	66.901	1.316	0.704	0.099
PE-CP	Chih./Gpe. y Calvo	26°10'24"	-106°36'21"	2740	1.446	35	74.135	71.422	1.332	0.799	0.148
PE-MM-S2	Dgo./Santiago Papasquiario	24°58'15"	-105°32'33"	2347	1.919	35	67.527	58.319	1.281	0.638	0.079
PE-LCH	Chih./Madera	29°12'51"	-108°9'17"	2180	2.493	35	66.749	59.281	1.285	0.630	0.078
PE-PP	Chih./Moris	28°14'07"	-108°45'40"	1820	2.737	35	66.023	60.726	1.284	0.649	0.086
PE-ON	Chih./Madera	29°15'27"	-108°08'13"	2176	3.696	35	67.209	64.091	1.299	0.684	0.098
PE-CHC	Chih./Moris	28°13'18"	-108°43'51"	1876	4.704	35	66.059	61.462	1.290	0.654	0.092
PE-MC3	Chih./Urique	27°19'40"	-108°09'42"	1838	4.985	35	70.134	67.583	1.313	0.761	0.131
PE-MC-U	Chih./Urique	27°26'30"	-108°3'56"	2090	6.382	35	70.730	69.788	1.322	0.704	0.107
<b>Central populations of <i>P. engelmannii</i></b>											
PE-MCHI	Chih./Guachochi	27°9'58"	-107°00'07"	2344	16.019	35	70.351	66.874	1.314	0.715	0.123
PE-AM	Chih./Gpe. y Calvo	26°13'04"	-106°50'59"	2390	17.259	35	66.718	60.924	1.289	0.632	0.080
PE-CUE	Chih./Guachochi	27°13'24"	-107°3'28"	2309	18.22	35	72.102	67.751	1.315	0.753	0.146
<b>Peripheral populations of <i>P. herrerae</i></b>											
PH-GUH	Dgo./San Dimas	24°28'06"	-106°06'12"	2358	3.98	35	69.517	61.855	1.302	0.649	0.135
PH-PSU	Dgo./San Dimas	24°26'13"	-106°07'54"	2663	5.38	35	72.639	70.716	1.333	0.780	0.210
PH-MR	Chih./Ocampo	28°10'22"	-108°15'01"	2251	5.63	35	72.155	67.439	1.319	0.715	0.199
PH-MC	Chih./Guazapares	27°27'02"	-108°04'44"	2089	7.85	35	68.661	61.560	1.295	0.621	0.140
PH-RM	Dgo./San Dimas	24°26'01"	-106°03'08"	2434	7.89	35	73.586	69.600	1.329	0.742	0.223
<b>Central populations of <i>P. herrerae</i></b>											
PH-MC2	Chih./Urique	27°19'29"	-108°09'37"	1841	11.49	35	68.117	57.903	1.279	0.621	0.131
PH-PI	Chih./Urique	27°18'37"	-108°09'33"	2399	12.61	35	77.212	72.128	1.338	0.778	0.277
PH-MC1	Chih./Urique	27°18'37"	-108°09'33"	1858	13.17	35	72.761	59.839	1.285	0.663	0.142
<b>Peripheral populations of <i>P. leiophylla</i></b>											
PLE-CMP	Chih./Urique	27°16'12"	-108°00'53"	2035	1.91	35	74.799	70.259	1.330	0.778	0.234
PLE-FR	Chih./Guachochi	26°45'48"	-107°07'17"	2502	6.27	35	76.210	74.897	1.354	0.778	0.244
<b>Central populations of <i>P. leiophylla</i></b>											
PLE-EV	Chih./Madera	29°17'22"	-108°06'00"	2201	9.80	35	70.973	65.402	1.306	0.731	0.243
PLE-AG	Dgo./Santiago Papasquiario	29°17'22"	-108°06'00"	2511	16.14	35	75.542	71.708	1.337	0.797	0.267

Note: Sample size (N), elevation (Elev.) PopGD = average genetic distance within populations; GD = average genetic distance between populations; DGEO = distance to the nearest edge (km); diversity and divergence indexes:  $v_2$  = measured genetic diversity through the effective number of variants, % Poly = Percentage of polymorphic fragments, DW = frequency down-weighted marker value.

**Table S2.** Geographic location of the 80 populations of six *Pinus* spp. and results of diversity and divergence indexes calculated using GenAlEx 6.501 (criterion 2).

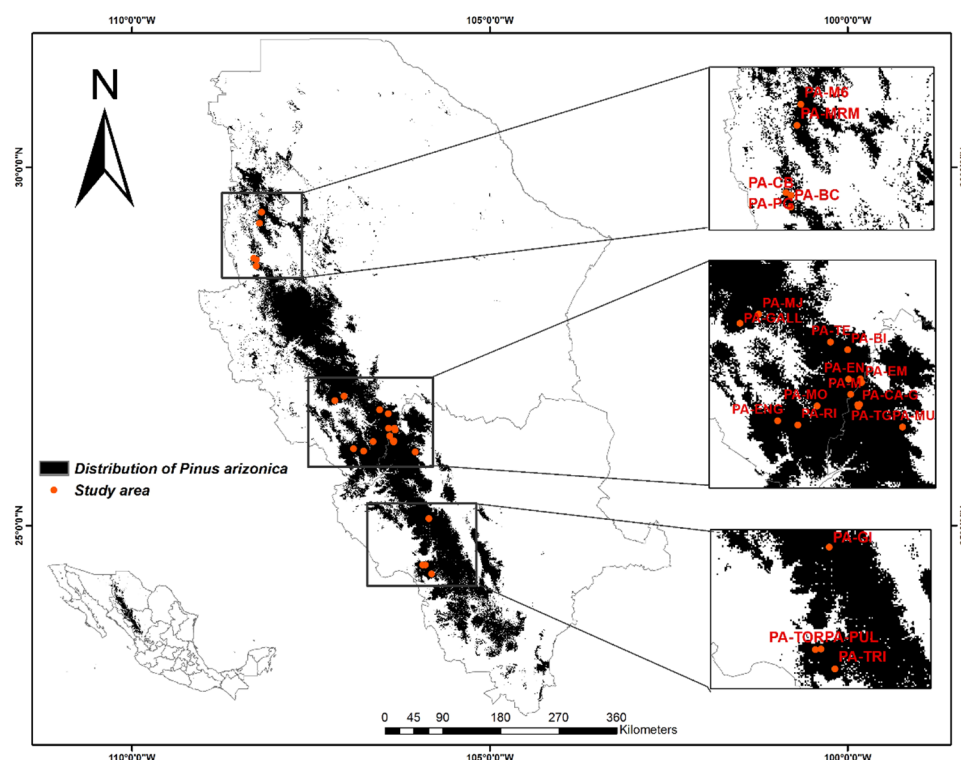
Code	State/Municipality	Latitude	Longitude	Elev. (m)	DGEO	N	PopGD	GD	$v_2$	% Poly	DW
<b>Peripheral populations of <i>P. arizonica</i></b>											
PA-CB	Chih./Temósachi	28°42'40"	-108°15'49"	2499	0.057	35	69.266	64.097	1.303	0.698	0.095
PA-PG	Chih./Temósachi	28°43'51"	-108°17'59"	2629	0.837	35	66.999	57.375	1.278	0.627	0.082
PA-M6	Chih./Madera	29°22'2"	-108°11'31"	2587	2.589	35	71.806	69.318	1.328	0.726	0.104
PA-BC	Chih./Temósachi	28°37'24"	-108°15'54"	2670	2.619	35	69.986	63.452	1.306	0.641	0.080
PA-PUL	Dgo./San Dimas	24°27'09"	-105°54'16"	2533	3.733	35	68.878	55.143	1.266	0.586	0.070
PA-TOR	Dgo./San Dimas	24°27'00"	-105°56'26"	2486	4.257	35	68.784	61.472	1.291	0.671	0.089
PA-MRM	Chih./Madera	29°13'13"	-108°13'11"	2398	4.557	35	68.306	58.750	1.286	0.600	0.067
PA-UA	Chih./Balleza	26°21'38"	-106°20'04"	2675	5.421	35	77.397	75.156	1.352	0.780	0.138
PA-GALL	Chih./Guachochi	26°44'41"	-107°10'06"	2480	5.463	34	76.382	71.321	1.338	0.726	0.128
PA-MU	Chih./Gpe. y Calvo	26°01'39"	-106°02'38"	2669	6.034	35	76.498	77.273	1.363	0.791	0.132
PA-TRI	Dgo./San Dimas	24°19'38"	-105°48'58"	2651	6.299	35	70.858	64.249	1.297	0.756	0.107
PA-EM	Chih./Balleza	26°20'07"	-106°19'34"	2700	6.595	35	76.736	71.882	1.336	0.778	0.139
PA-BI	Chih./Balleza	26°33'44"	-106°25'25"	2684	7.108	35	77.144	76.592	1.363	0.734	0.121
PA-MJ	Chih./Guachochi	26°48'24"	-107°02'19"	2420	9.602	35	70.176	65.190	1.310	0.695	0.088
PA-M	Chih./Balleza	26°15'10"	-106°24'10"	2801	16.109	35	69.326	63.576	1.305	0.663	0.078
PA-GI	Dgo./Tepehuanes	25°05'57"	-105°51'12"	2569	17.087	35	70.375	65.718	1.314	0.682	0.094
PA-TO	Dgo./Guanaceví	26°10'58"	-106°20'28"	3062	18.760	35	66.677	52.027	1.250	0.578	0.064
PA-TG	Dgo./Guanaceví	26°10'50"	-106°21'08"	2913	18.813	35	70.177	65.674	1.314	0.682	0.093
PA-GUA	Dgo./Guanaceví	26°10'37"	-106°20'52"	2956	19.810	35	66.483	56.376	1.267	0.627	0.077
PA-CA-G	Dgo./Guanaceví	26°10'11"	-106°20'54"	2948	20.379	35	80.840	83.755	1.387	0.813	0.157
PA-TE	Chih./Balleza	26°36'55"	-106°32'33"	2760	12.522	35	72.849	69.798	1.329	0.704	0.101
<b>Central populations of <i>P. arizonica</i></b>											
PA-EN	Chih./Balleza	26°21'29"	-106°24'58"	2721	16.663	35	75.626	70.914	1.332	0.772	0.134
PA-ENG	Chih./Gpe. y Calvo	26°04'16"	-106°54'26"	2657	11.148	35	86.765	86.360	1.411	0.799	0.127
PA-RI	Chih./Gpe. y Calvo	26°02'30"	-106°46'03"	2571	18.695	35	69.056	63.052	1.300	0.693	0.086
PA-MO	Chih./Gpe. y Calvo	26°10'23"	-106°38'07"	2724	20.431	38	71.878	69.780	1.327	0.716	0.093
PA-PG	Chih./Temósachi	28°43'51"	-108°17'59"	2629	0.837	35	66.999	57.375	1.278	0.627	0.082
PA-M6	Chih./Madera	29°22'2"	-108°11'31"	2587	2.589	35	71.806	69.318	1.328	0.726	0.104
PA-BC	Chih./Temósachi	28°37'24"	-108°15'54"	2670	2.619	35	69.986	63.452	1.306	0.641	0.080
PA-UA	Chih./Balleza	26°21'38"	-106°20'04"	2675	5.421	35	77.397	75.156	1.352	0.780	0.138
PA-MU	Chih./Gpe. y Calvo	26°01'39"	-106°02'38"	2669	6.034	35	76.498	77.273	1.363	0.791	0.132
PA-TRI	Dgo./San Dimas	24°19'38"	-105°48'58"	2651	6.299	35	70.858	64.249	1.297	0.756	0.107
PA-EM	Chih./Balleza	26°20'07"	-106°19'34"	2700	6.595	35	76.736	71.882	1.336	0.778	0.139
PA-BI	Chih./Balleza	26°33'44"	-106°25'25"	2684	7.108	35	77.144	76.592	1.363	0.734	0.121
<b>Peripheral populations of <i>P. cembroides</i></b>											
PCE-AD	Dgo./Santiago Papasquiaro	24°58'22"	-105°32'41"	2331	1.80	35	91.778	79.842	1.376	0.816	0.372
PCE-MM	Dgo./Guanaceví	26°15'09"	-106°4'12"	2631	7.71	35	90.576	79.267	1.373	0.802	0.318
PCE-PEN	Chih./Balleza	26°57'01"	-106°38'43"	2369	14.95	34	93.638	82.993	1.380	0.866	0.426
<b>Central populations of <i>P. cembroides</i></b>											
PCE-MA	Chih./Balleza	26°32'18"	-106°28'32"	2588	1.19	35	88.082	71.812	1.339	0.799	0.317
PCE-CT	Dgo./Guanaceví	26°19'20"	-106°05'03"	2499	13.24	35	90.961	79.039	1.372	0.832	0.359

Peripheral populations of <i>P. durangensis</i>											
PD-MC	Chih./Urique	27°13'00"	-107°59'53"	2381	2.35	35	77.992	76.961	1.362	0.778	0.124
PD-D	Chih./Madera	29°29'49"	-108°18'58"	2217	3.25	35	74.504	69.361	1.328	0.731	0.121
PD-CE	Chih./Balleza	26°15'10"	-106°24'10"	2801	4.43	35	72.220	65.671	1.310	0.720	0.108
PD-MCCI	Dgo./Ocampo	28°10'32"	-108°16'0"	2212	5.75	35	85.924	89.388	1.414	0.873	0.152
PD-ME	Dgo./Otáez	24°44'11"	-105°56'43"	2647	6.70	35	72.651	67.358	1.317	0.717	0.106
PD-AN	Chih./Balleza	26°25'18"	-106°31'36"	2768	7.43	35	77.608	71.398	1.334	0.778	0.144
PD-MH	Chih./Urique	27°25'03"	-107°57'01"	1848	9.48	35	75.663	71.459	1.334	0.761	0.110
PD-PIE	Chih./Madera	29°41'00"	-108°26'36"	2219	9.74	35	73.578	66.655	1.310	0.704	0.088
PD-PI	Chih./Gpe. y Calvo	26°4'41"	-106°59'21"	2630	11.41	33	81.279	53.201	1.257	0.570	0.051
PD-45	Chih./Temósachi	28°44'19"	-108°16'18"	2635	11.41	35	74.718	69.476	1.325	0.756	0.114
PD-AG	Chih./Gpe. y Calvo	25°47'16"	-106°41'14"	2595	12.34	35	76.045	72.457	1.342	0.761	0.127
PD-MG	Chih./Madera	29°35'56"	-108°26'12"	2231	15.36	35	74.964	72.850	1.343	0.723	0.118
PD-PA	Chih./Gpe. y Calvo	26°1'13"	-106°54'32"	2381	18.60	35	79.063	71.788	1.339	0.726	0.090
PD-PB	Chih./Gpe. y Calvo	26°5'14"	-106°47'37"	2701	29.53	35	79.165	75.224	1.350	0.810	0.153
Central populations of <i>P. durangensis</i>											
PD-PIS	Dgo./San Dimas	24°27'20"	-106°08'08"	2495	1.70	35	74.939	68.461	1.320	0.753	0.123
PD-CQ	Chih./Urique	27°12'18"	-108°00'28"	2444	4.15	34	81.453	78.067	1.367	0.816	0.161
PD-POR	Chih./Guachochi	26°46'42"	-107°15'9"	2578	11.84	35	78.150	78.848	1.367	0.797	0.111
PD-GRA	Chih./Guachochi	26°41'21"	-107°15'20"	2543	11.97	35	72.103	64.007	1.303	0.687	0.085
PD-JO	Dgo./Santiago Papasquiario	25°00'11"	-106°09'47"	2410	2.77	35	73.383	68.679	1.320	0.723	0.098
PD-SO	Dgo./Santiago Papasquiario	25°00'08"	-106°10'26"	2405	2.79	35	73.538	69.341	1.328	0.712	0.102
PD-O-M	Chih./Madera	29°01'11"	-108°19'54"	2441	2.81	35	74.108	65.469	1.314	0.654	0.094
PD-PT	Dgo./San Dimas	24°23'09"	-106°02'57"	2438	5.84	35	74.530	65.180	1.307	0.701	0.123
PD-PORR	Chih./Guachochi	26°44'27"	-107°15'12"	2552	6.64	35	79.634	71.284	1.330	0.728	0.126
PD-PAN	Chih./Guachochi	27°15'37"	-107°27'16"	2516	31.45	35	72.382	60.766	1.289	0.679	0.076
PD-CU	Dgo./San Dimas	24°26'09"	-106°03'05"	2450	8.61	35	70.197	59.748	1.279	0.679	0.092
PD-MP	Dgo./Ocampo	28°13'34"	-108°17'51"	2385	10.26	35	72.443	68.037	1.320	0.701	0.106
Peripheral populations of <i>P. engelmannii</i>											
PE-LJ	Chih./Balleza	26°31'22"	-106°17'41"	2602	0.618	35	71.670	66.901	1.316	0.704	0.099
PE-CP	Chih./Gpe. y Calvo	26°10'24"	-106°36'21"	2740	1.446	35	74.135	71.422	1.332	0.799	0.148
PE-PP	Chih./Moris	28°14'07"	-108°45'40"	1820	2.737	35	66.023	60.726	1.284	0.649	0.086
PE-CHC	Chih./Moris	28°13'18"	-108°43'51"	1876	4.704	35	66.059	61.462	1.290	0.654	0.092
PE-MC3	Chih./Urique	27°19'40"	-108°09'42"	1838	4.985	35	70.134	67.583	1.313	0.761	0.131
PE-AM	Chih./Gpe. y Calvo	26°13'04"	-106°50'59"	2390	17.259	35	66.718	60.924	1.289	0.632	0.080
Central populations of <i>P. engelmannii</i>											
PE-MCHI	Chih./Guachochi	27°9'58"	-107°00'07"	2344	16.019	35	70.351	66.874	1.314	0.715	0.123
PE-MM-S2	Dgo./Santiago Papasquiario	24°58'15"	-105°32'33"	2347	1.919	35	67.527	58.319	1.281	0.638	0.079
PE-CUE	Chih./Guachochi	27°13'24"	-107°3'28"	2309	18.22	35	72.102	67.751	1.315	0.753	0.146
PE-LCH	Chih./Madera	29°12'51"	-108°9'17"	2180	2.493	35	66.749	59.281	1.285	0.630	0.078
PE-ON	Chih./Madera	29°15'27"	-108°08'13"	2176	3.696	35	67.209	64.091	1.299	0.684	0.098
PE-MC-U	Chih./Urique	27°26'30"	-108°3'56"	2090	6.382	35	70.730	69.788	1.322	0.704	0.107
Peripheral populations of <i>P. herrerae</i>											
PH-PSU	Dgo. /San Dimas	24°26'13"	-106°07'54"	2663	5.38	35	72.639	70.716	1.333	0.780	0.210
PH-RM	Dgo. /San Dimas	24°26'01"	-106°03'08"	2434	7.89	35	73.586	69.600	1.329	0.742	0.223
PH-MC2	Chih./Urique	27°19'29"	-108°09'37"	1841	11.49	35	68.117	57.903	1.279	0.621	0.131
PH-MC1	Chih./Urique	27°18'37"	-108°09'33"	1858	13.17	35	72.761	59.839	1.285	0.663	0.142
Central populations of <i>P. herrerae</i>											
PH-GUH	Dgo./San Dimas	24°28'06"	-106°06'12"	2358	3.98	35	69.517	61.855	1.302	0.649	0.135

PH-PI	Chih./Urique	27°18'37"	-108°09'33"	2399	12.61	35	77.212	72.128	1.338	0.778	0.277
PH-MR	Chih./Ocampo	28°10'22"	-108°15'01"	2251	5.63	35	72.155	67.439	1.319	0.715	0.199
PH-MC	Chih./Guazapares	27°27'02"	-108°04'44"	2089	7.85	35	68.661	61.560	1.295	0.621	0.140
<b>Peripheral populations of <i>P. leiophylla</i></b>											
PLE-CMP	Chih./Urique	27°16'12"	-108°00'53"	2035	1.91	35	74.799	70.259	1.330	0.778	0.234
PLE-AG	Dgo./Santiago Papasquiario	29°17'22"	-108°06'00"	2511	16.14	35	75.542	71.708	1.337	0.797	0.267
<b>Central populations of <i>P. leiophylla</i></b>											
PLE-EV	Chih./Madera	29°17'22"	-108°06'00"	2201	9.80	35	70.973	65.402	1.306	0.731	0.243
PLE-FR	Chih./Guachochi	26°45'48"	-107°07'17"	2502	6.27	35	76.210	74.897	1.354	0.778	0.244

Note: Sample size (N), elevation (Elev.) PopGD = average genetic distance within populations; GD = average genetic distance between populations; DGEO = distance to the nearest edge (km); diversity and divergence indexes:  $v_2$  = measured genetic diversity through the effective number of variants; % *Poly* = percentage of polymorphic fragments; DW = frequency down-weighted marker value.

### Supplementary Figures and Captions.



**Figure S1.** Map showing the location of the 25 populations of *P. arizonica*.

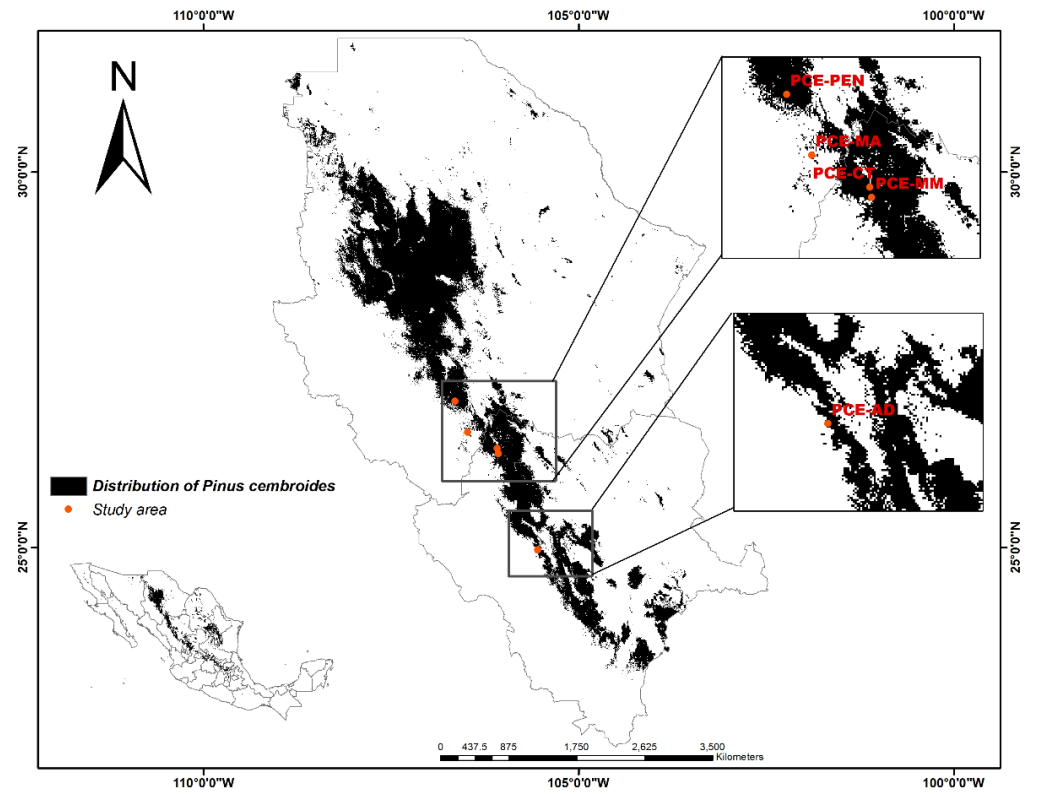


Figure S2. Map showing the location of the five populations of *P. cembroides*.

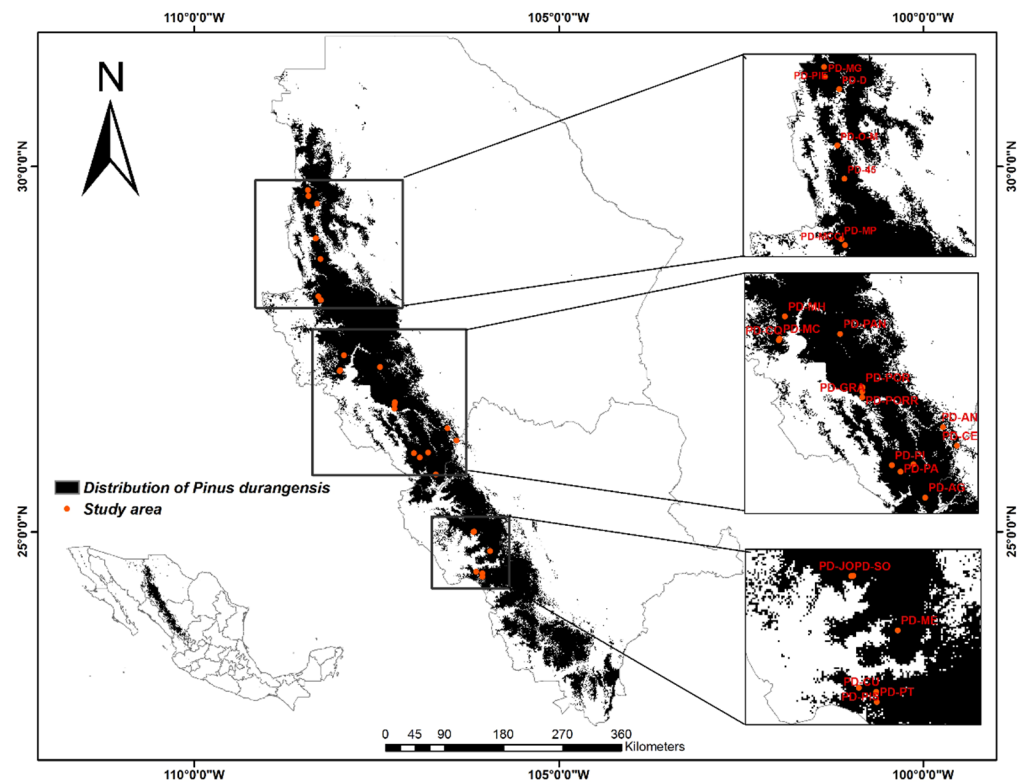


Figure S3. Map showing the location of the 26 populations of *P. durangensis*.

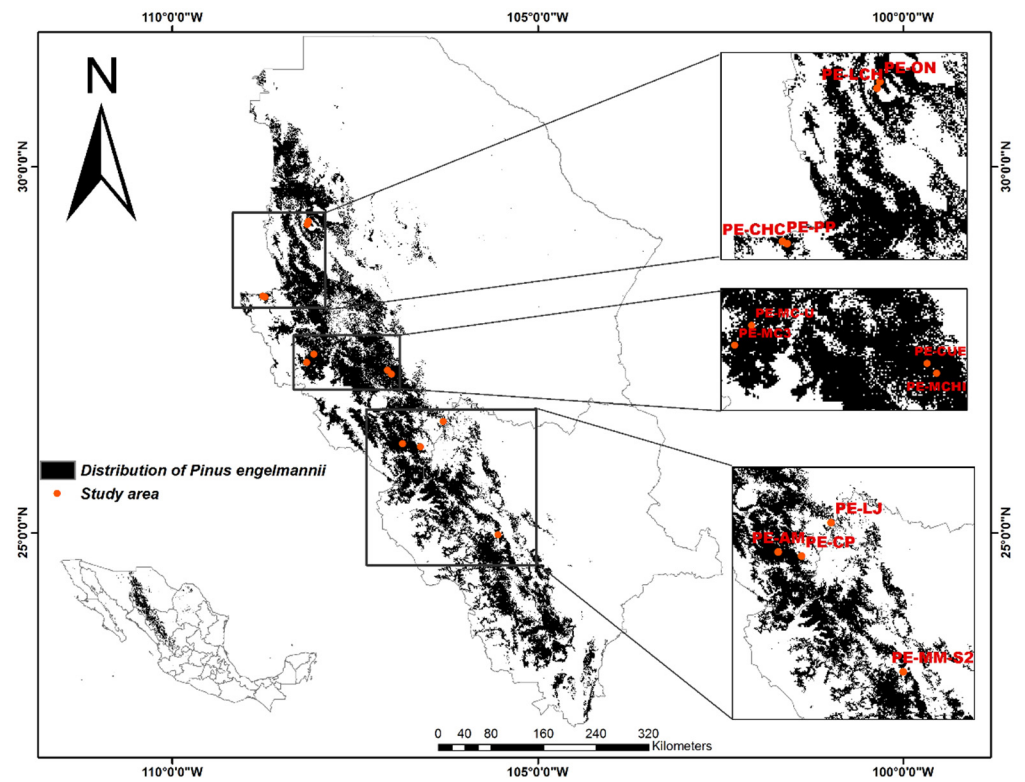


Figure S4. Map showing the location of the 12 populations of *P. engelmannii*.

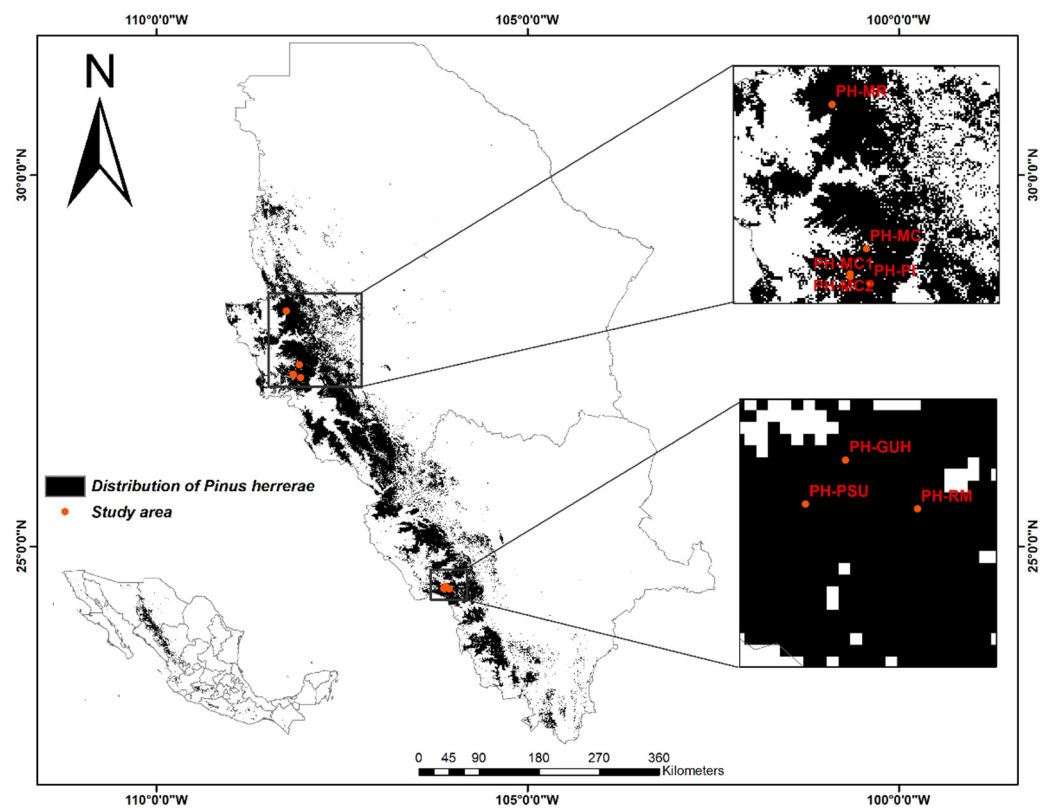
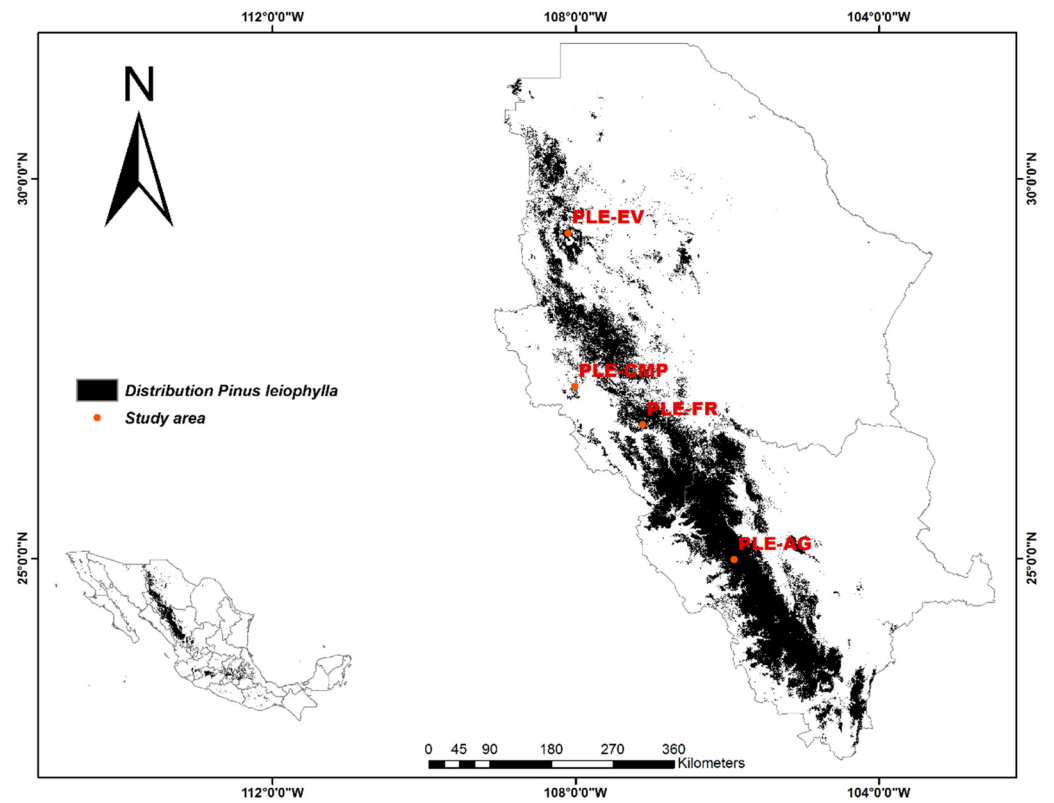


Figure S5. Map showing the location of the eight populations of *P. herrerae*.





**Figure S6.** Map showing the location of the four populations of *P. leiophylla*.