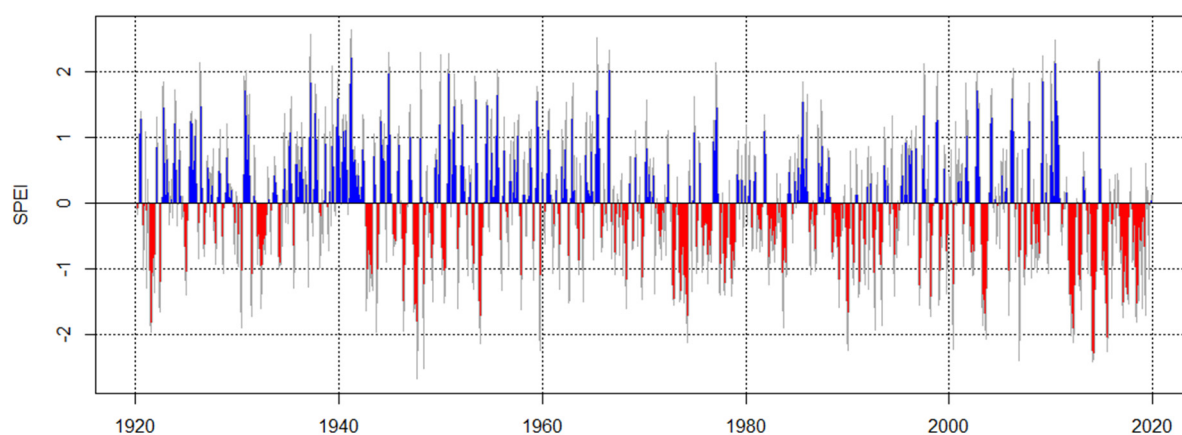


**Supplementary materials to paper:** Species-Specific Effects of Groundwater Level Alteration on Climate Sensitivity of Floodplain Trees (Šenfelc, M.; Horák, P.; Kvasnica, J.; Šrámek, M.; Hornová, H.; Maděra, P.)

**Figure S1.** Standardized Precipitation Evaporation index (SPEI) for the period 1920–2019. The SPEI was calculated from the data obtained from Lednice meteorological station.



**Figure S2.** Slopes of linear fits for RWI100 chronologies representing long-term growth trends for the period after Thaya river revitalization (1972–2019). The 1972–2019 linear slopes were not significant except for FRAN at SO, which represents a significant decrease. Slopes of liner fits were following: 0.001551, -0.006579 for *Fraxinus angustifolia* (FRAN) in KO and SO respectively; 0.000282, -0.001425 for *Quercus robur* (QURO) in KO and SO respectively.

