

## Supplementary information

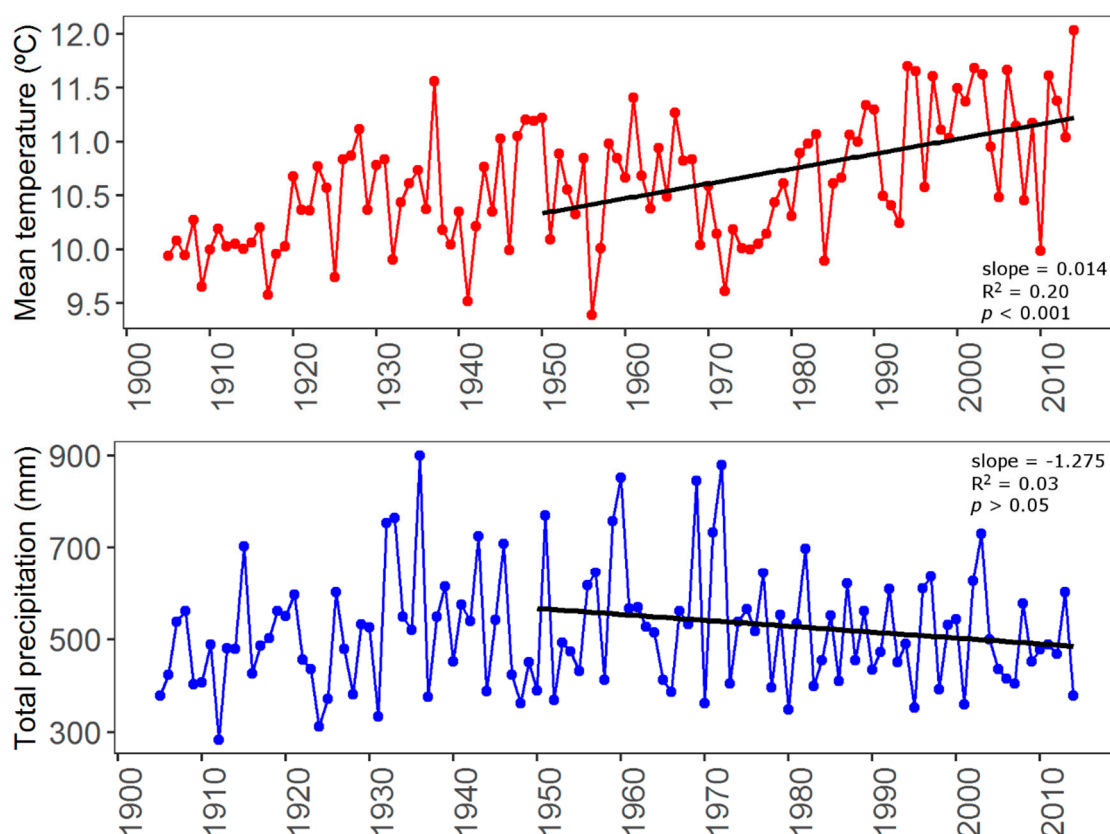
**Table S1.** Characteristics of the climate stations available near the study area.

Weather station	Latitude (N)	Longitude (E)	Elevation (m asl)	Time-span	Frequency
Tortosa	40°48'45"	0°31'16"	44	1905-2015	Daily
Reus	41°09'18"	1°06'31"	125	1952-2015	Daily
Montblanc	41°22'35"	1°09'50"	340	1974-1991	Monthly
Monastir Poblet	41°22'51"	1°04'57"	510	1974-2014	Daily
Riudabella	41° 22' 21"	1° 02' 34"	590	1995-2005	Daily
Prades	41°18'34"	0°59'16"	969	1995-2014	Daily
Tossal Baltasana	41° 19' 34"	1° 00' 15"	1203	2010-2014	Monthly
Tillar (study site)	41°20'0.87"	1°0'46.12"	929		

**Table S2.** Biometric tree characteristics. N= 16 and 9 Scots pines and pubescent oaks, respectively.

Species	DBH (cm)	Height (m)	Sapwood (cm)
Scots pine	21.90 ± 11.19	13.50 ± 3.40	5.48 ± 1.71
Pubescent oak	13.89 ± 3.79	7.72 ± 2.25	2.31 ± 0.55

**Figure S1.** Annual mean temperature and total sum of precipitation for the period 1901-2014. Linear regression models were fitted for the studied period 1950 – 2014.



**Figure S2.** Individual intra-annual growth rates of Scots pine and pubescent oak for the four consecutive growing periods 1997 – 2000. Upper and lower panels correspond to Scots pine and pubescent oak growth rates, respectively.

