

Figure S2. Height, diameter, and stem form of individual *A. koa* families (mean \pm SE; $n = 20$) one year after outplanting. Families represented by black bars had statistically significantly greater heights and diameters and superior form compared to those represented by white bars as determined by analysis of variance via generalized linear mixed models. KS is the susceptible control.

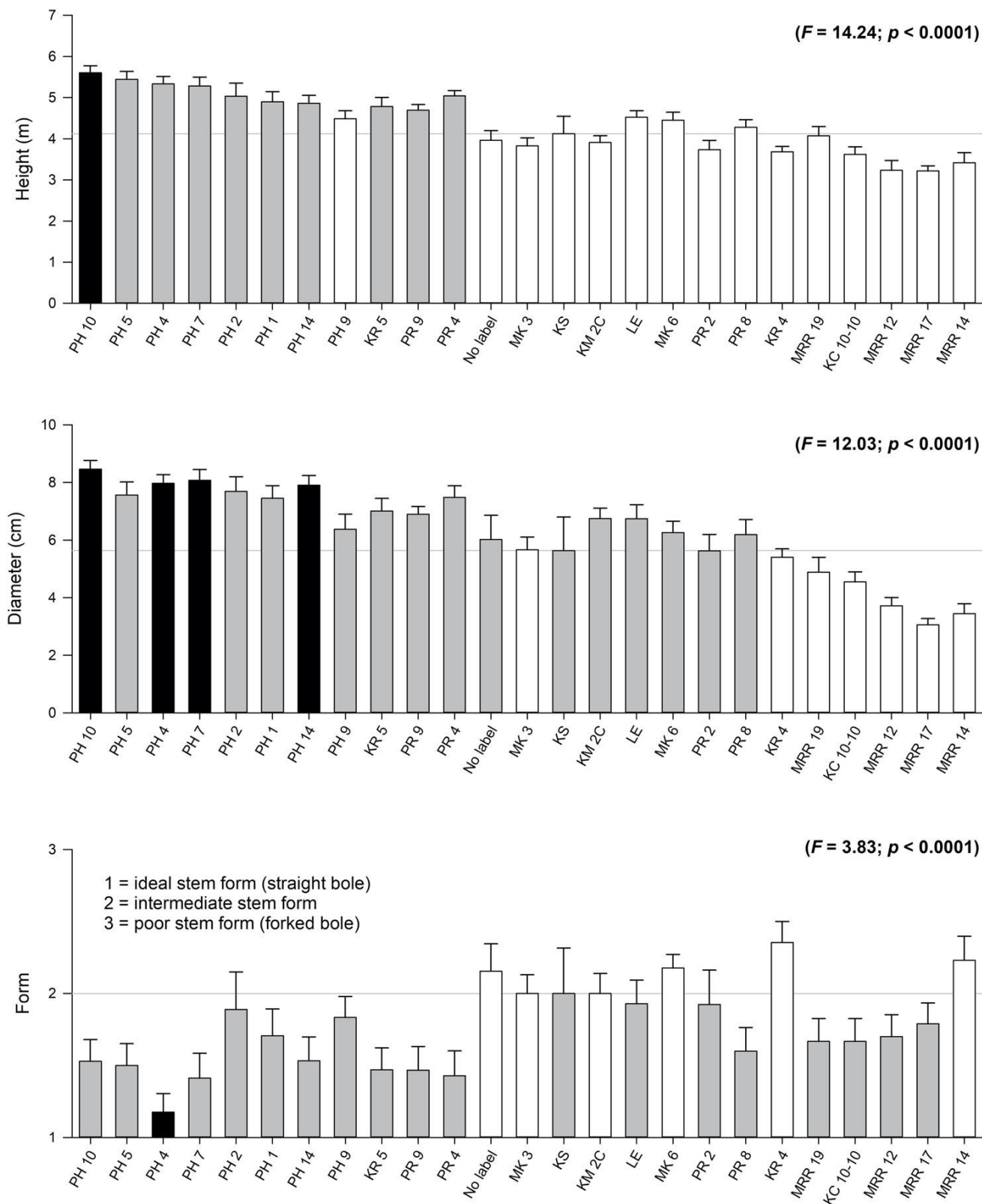


Figure S3. Height, diameter, and stem form of individual *A. koa* families (mean \pm SE; $n = 20$) two years after outplanting. Families represented by black bars had statistically significantly greater heights and diameters and superior form compared to those represented by white bars as determined by analysis of variance via generalized linear mixed models. KS is the susceptible control.

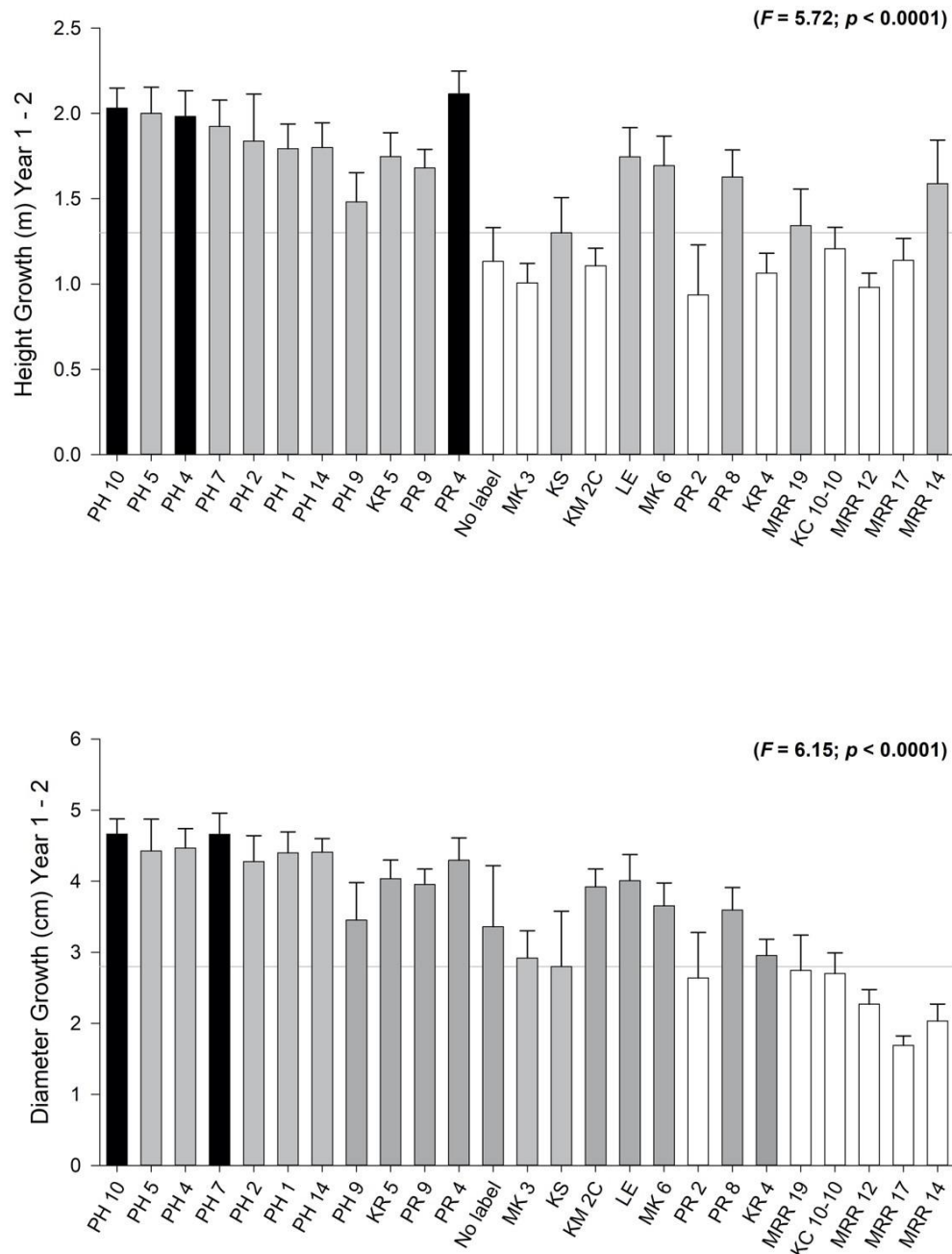


Figure S4. Height growth and diameter growth of individual *A. koa* families (mean \pm SE) from year 1 to year 2. Families represented by black bars had statistically significantly greater heights and diameters and superior form compared to those represented by white bars as determined by analysis of variance via generalized linear mixed models. KS is the susceptible control.

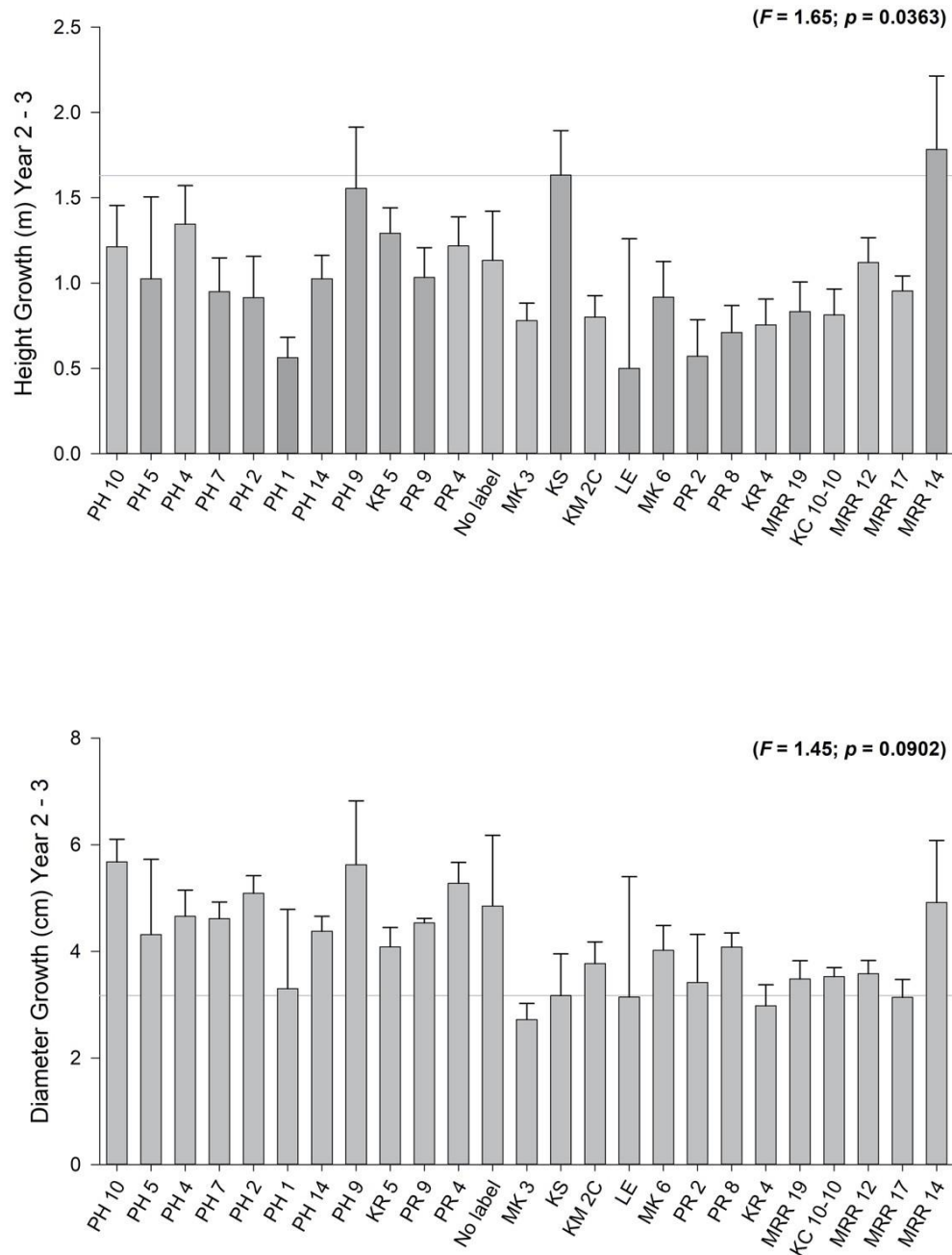


Figure S5. Height growth and diameter growth of individual *A. koa* families (mean \pm SE) from year 2 to year 3. KS is the susceptible control.

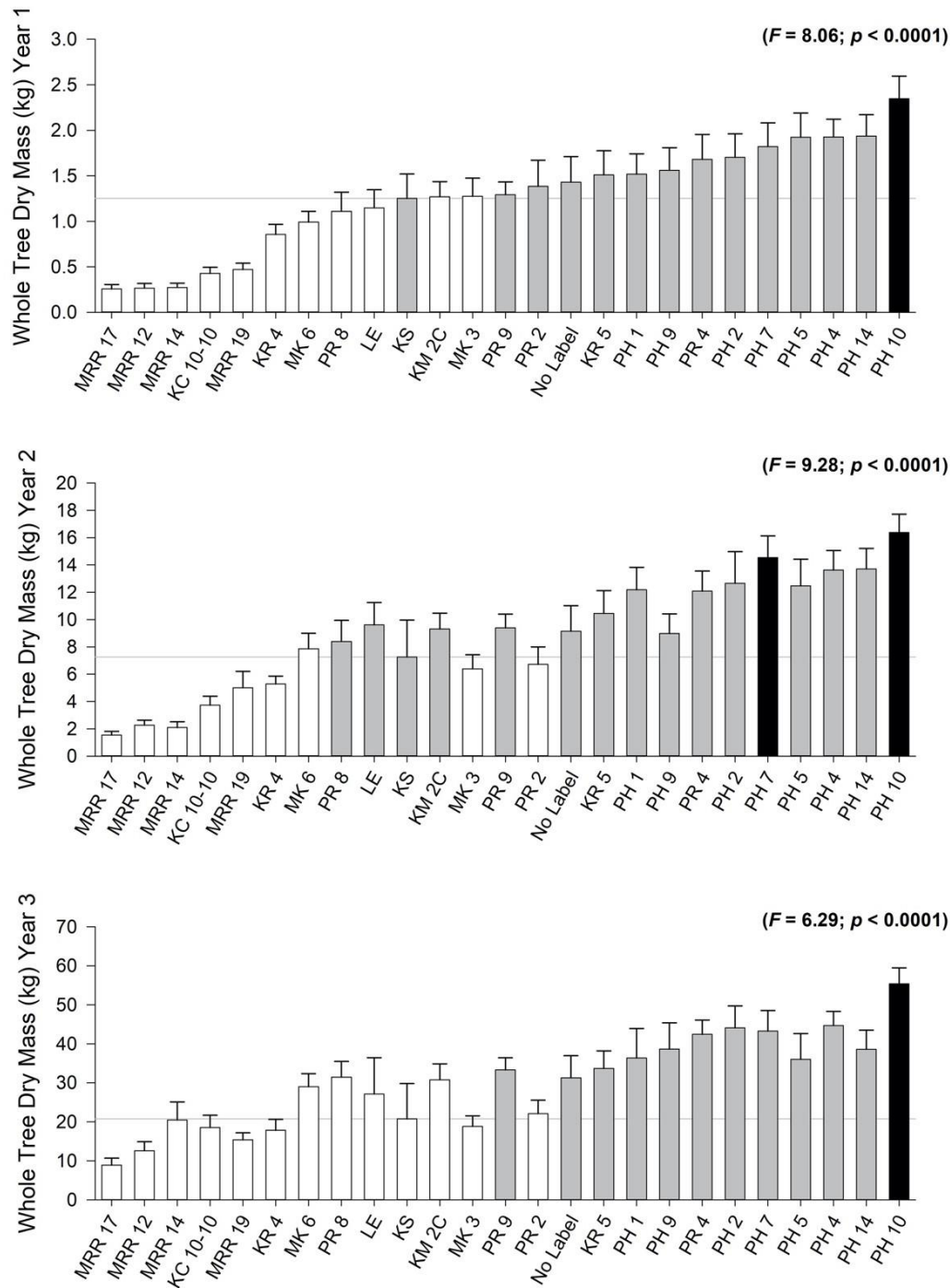


Figure S6. Whole tree dry mass by individual *A. koa* A. Gray families (mean \pm SE) at years 1, 2, and 3. Families represented by black bars had statistically significantly greater whole tree dry mass compared to those represented by white bars as determined by analysis of variance via generalized linear mixed models. KS is the susceptible control.