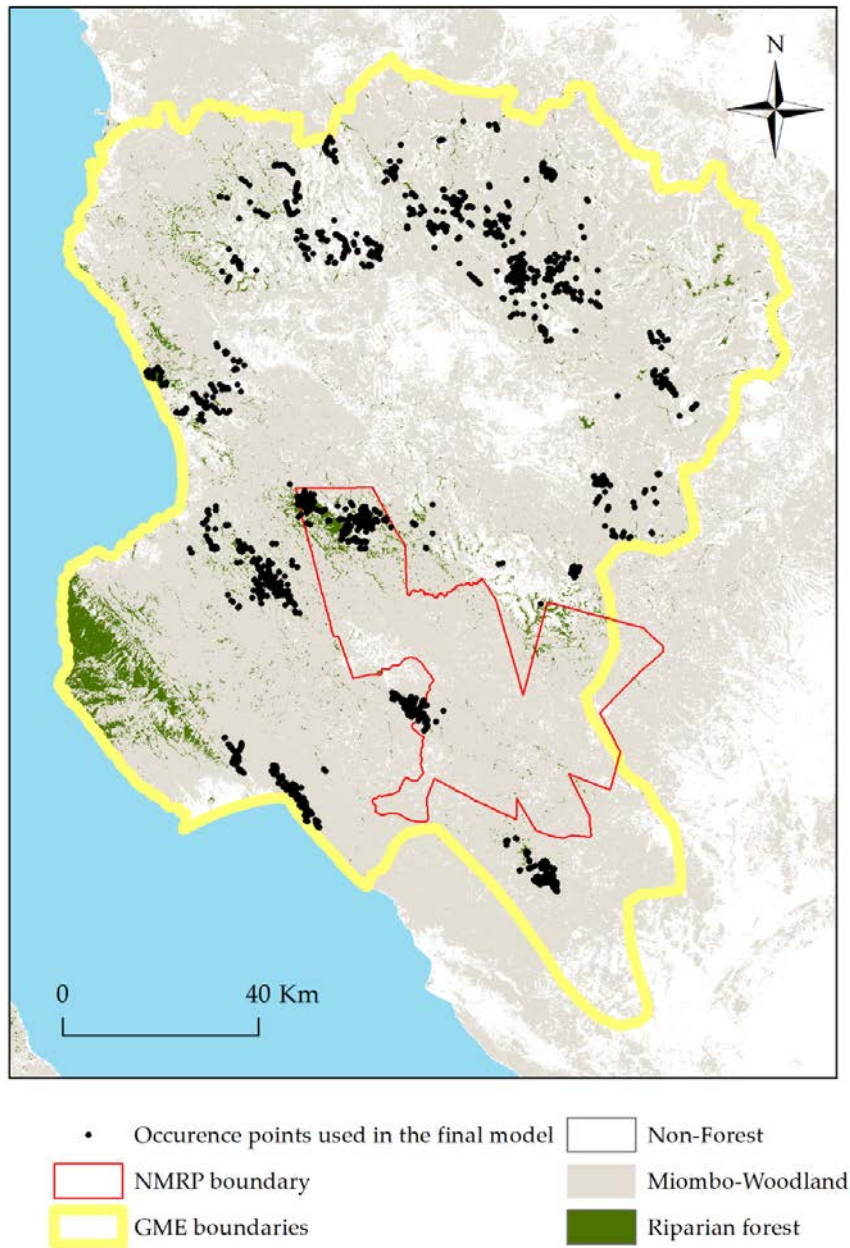


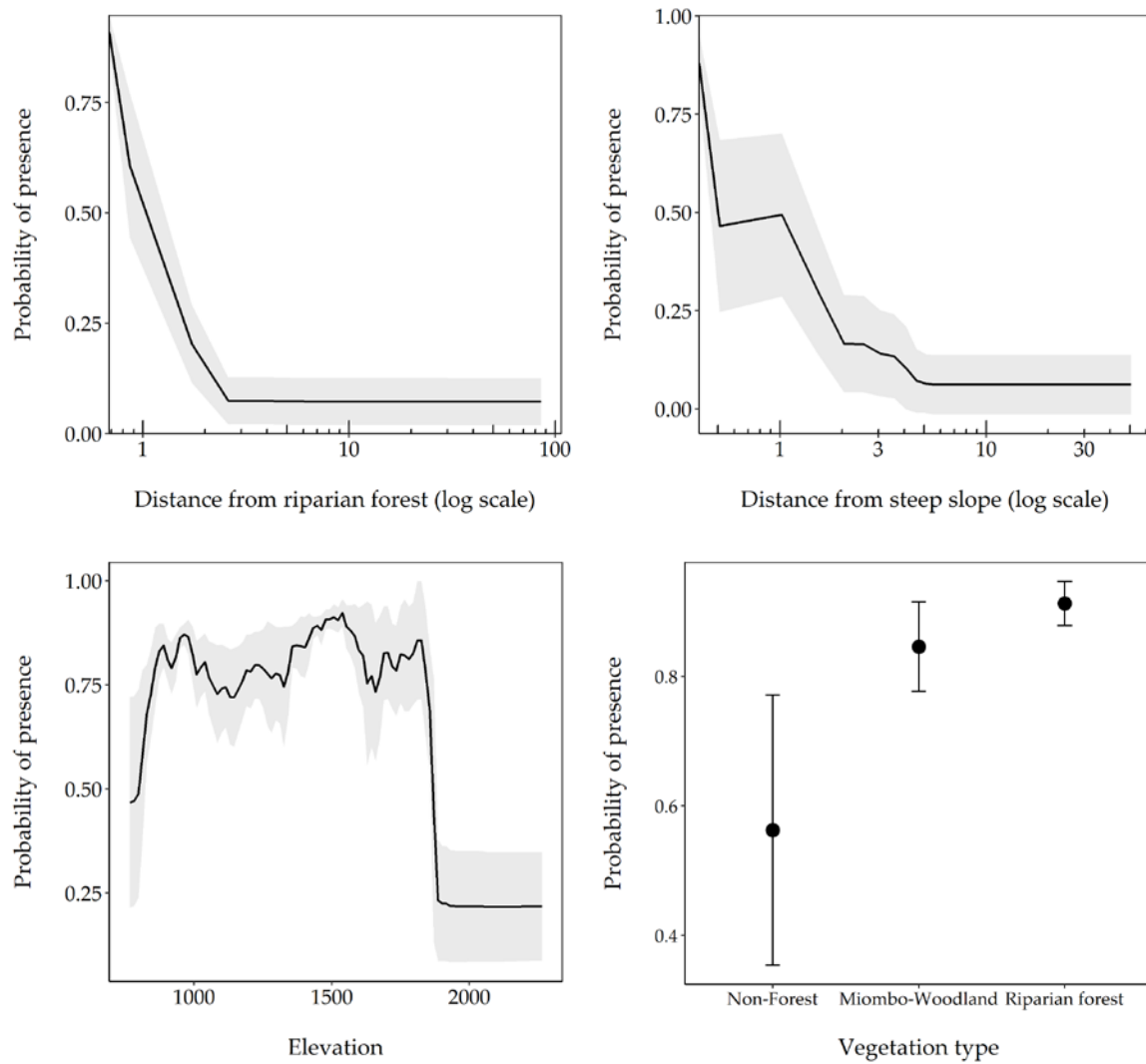
## Supplementary Materials



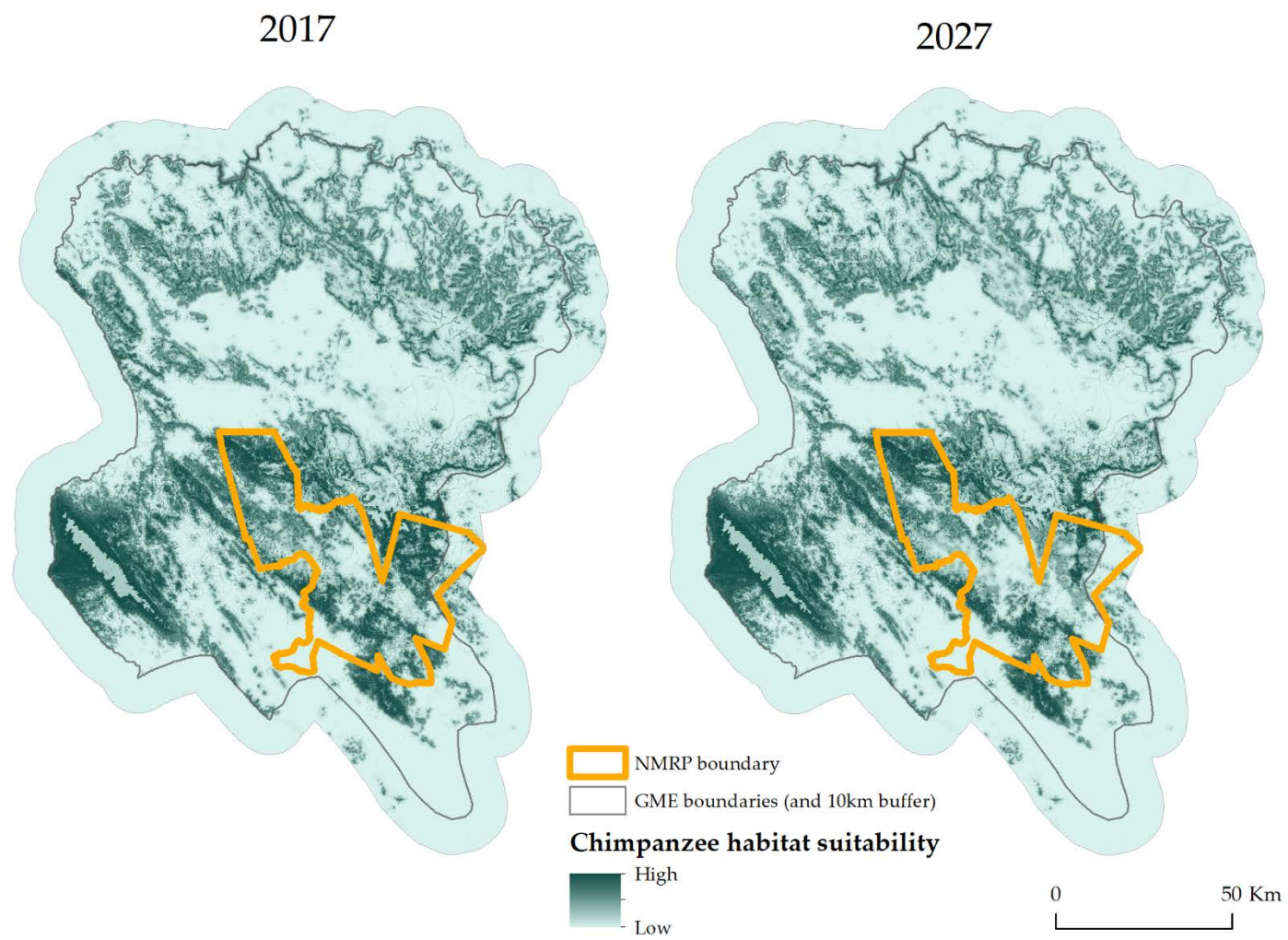
**Figure S1:** Locations of the occurrence points used in the final habitat suitability model

**Table S1:** Predictive accuracy and standard deviation (SD) of the 5 replicates for the 3 algorithms.

	Individual runs				Ensemble	
	TSS	SD	AUC	SD	TSS	ROC
<b>RF</b>	0.791	0.009	0.948	0.003	0.908	0.984
<b>GBM</b>	0.797	0.008	0.950	0.003	0.799	0.953
<b>Maxent</b>	0.787	0.009	0.945	0.003	0.79	0.949



**Figure S2:** Response curves derived by the ensemble prediction. The plots show the mean response (dark line and dark points) and the standard deviation (error bars and grey ribbon) of the 5 replicates of the 3 algorithms. The curves display how the predicted probability of presence vary in function of each environmental variable. These response curves do not account for interactions between variables.



**Figure S3:** Chimpanzee habitat suitability map for 2017 and 2027