

Article

Diseases of Eucalypts in Paraguay and first report of *Teratosphaeria zuluensis* from South America

Supplementary Materials:

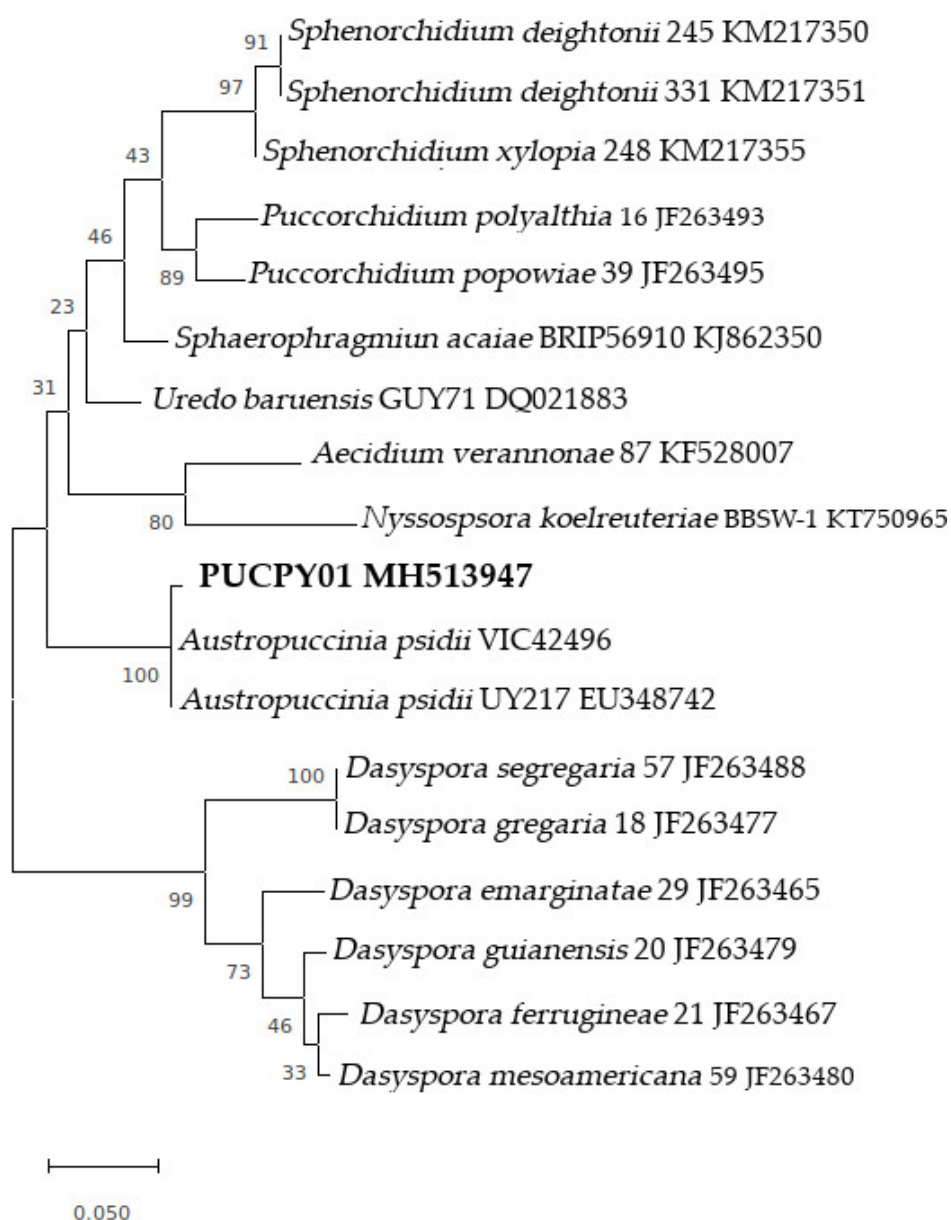


Figure S1. Phylogram based on the analysis of ITS region for *Austropuccinia* rust found in eucalypts leaves in Paraguay. Bootstrap confidence values (1000 replicates) are indicated above the internodes. The tree is rooted in *Dasyscypha segregaria*.