

Supplementary materials

Seasonal Drought Effects on Intra-Annual Stem Growth of Taiwan Pine along an Elevational Gradient in Subtropical China

Xinsheng Liu ^{1,2,*}, Chunsong Wang ¹ and Junkai Zhao ¹

¹ College of Tourism and Geography, Jiujiang University, East Qianjin Road No. 551, Jiujiang 332005, China

² DendroLab, Department of Natural Resources and Environmental Science, University of Nevada, Reno, NV 89557, USA

* Correspondence: xsliu287@gmail.com

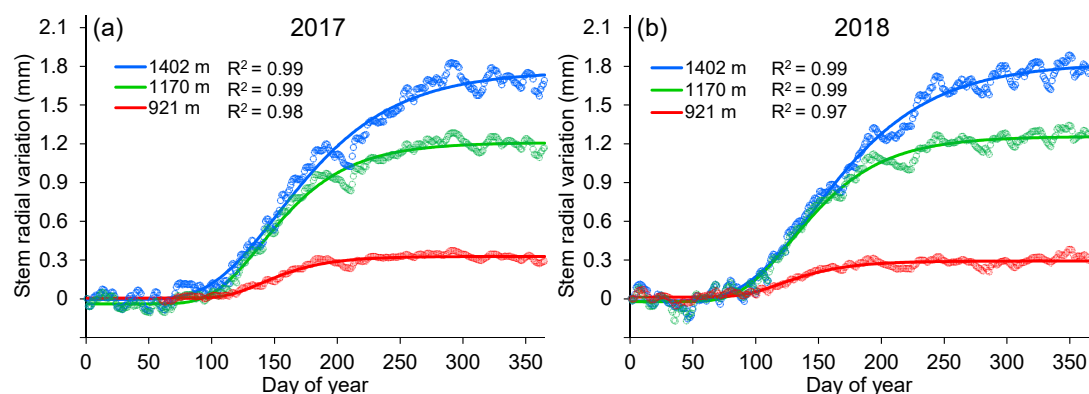


Figure S1. Observed and modeled stem radial variations of Taiwan pine at three elevations in 2017 and 2018. Open circles and lines represent dendrometer raw measurements and the Gompertz function modeled curves, respectively.



© 2019 by the authors. Licensee MDPI, Basel, Switzerland. This article is an open access article distributed under the terms and conditions of the Creative Commons Attribution (CC BY) license (<http://creativecommons.org/licenses/by/4.0/>).