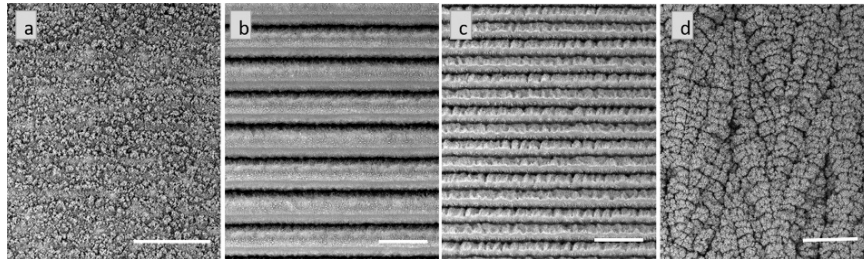
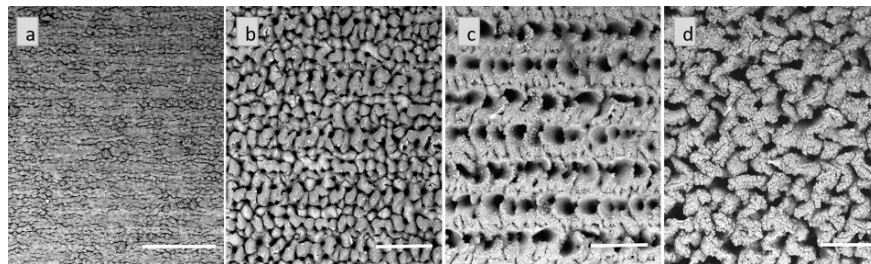


# Supplementary Materials: Effect of Repetition Rate on Femtosecond Laser-Induced Homogenous Microstructures

Sanchari Biswas, Adya Karthikeyan and Anne-Marie Kietzig



**Figure S1.** Representative images of the microstructures on Cu machined at 10 kHz. (a) Nanoforest; (b) Deep and well defined trenches; (c) Narrow trenches; (d) Rough and rugged chaotic structures. All scale bars represent 50  $\mu\text{m}$ .



**Figure S2.** Representative images of the microstructures on Ti machined at 10 kHz. (a) Undulating grooves; (b) Bumpy structures; (c) Holes; (d) Chaotic structures. All scale bars represent 50  $\mu\text{m}$ .