

Supplementary Materials

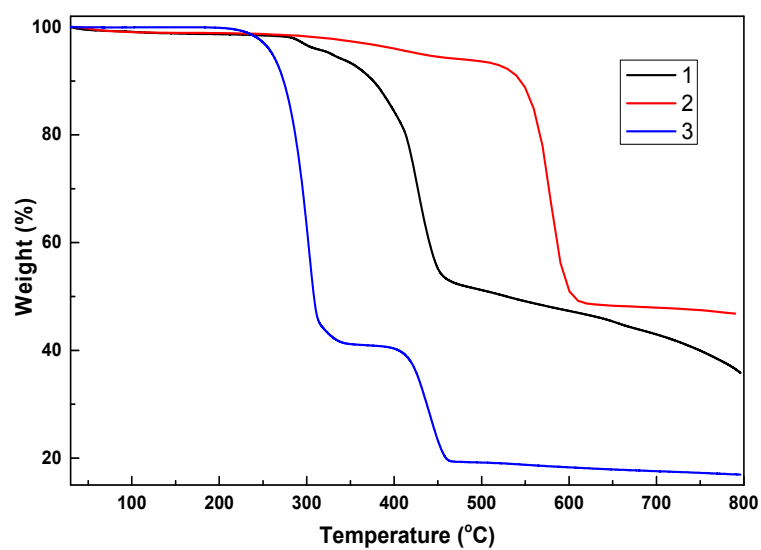


Figure S1. TGA for compounds **1–3**.

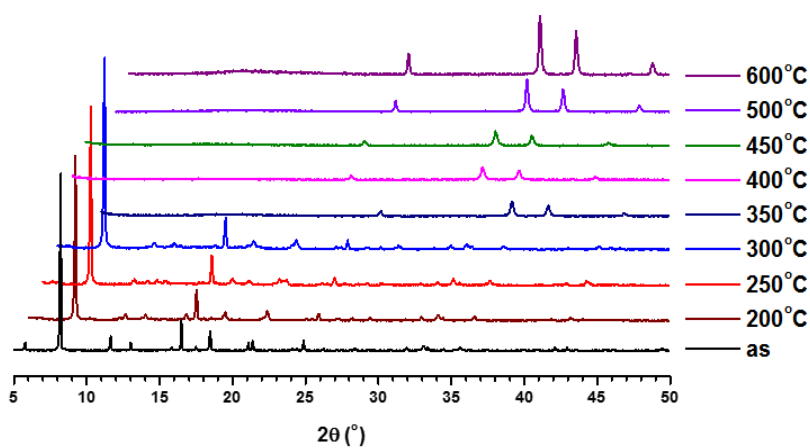


Figure S2. Varied temperatures PXRD patterns of **1**.

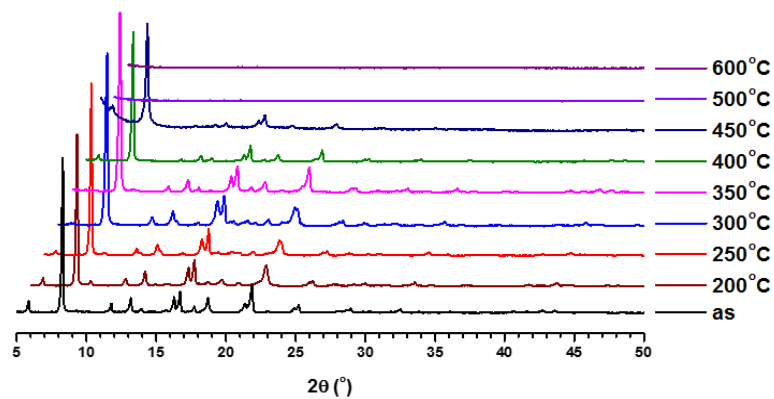


Figure S3. Varied temperatures PXRD patterns of **2**.

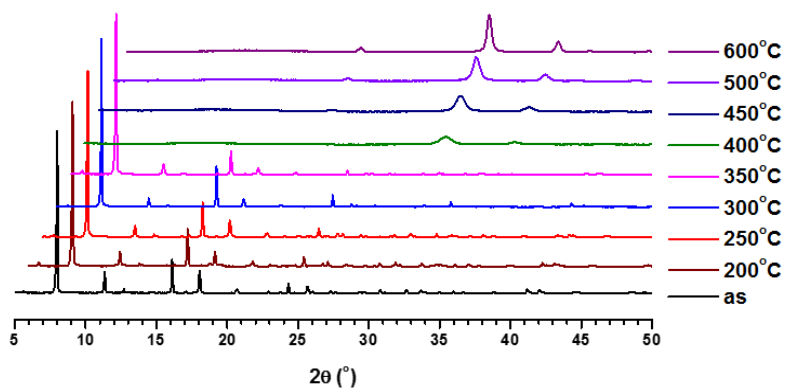


Figure S4. Varied temperatures PXRD patterns of **3**.

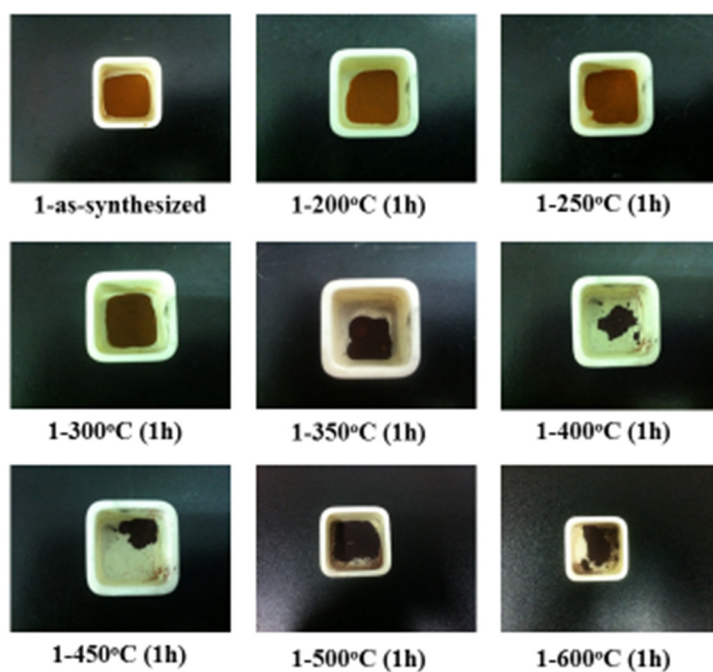


Figure S5. Photos of **1** after calcination at various temperatures for one hour.

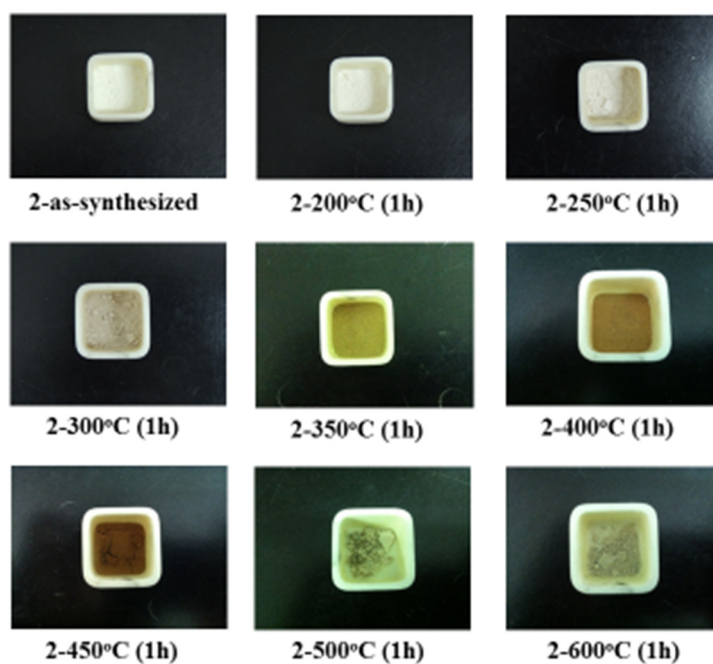


Figure S6. Photos of **2** after calcination at various temperatures for one hour.

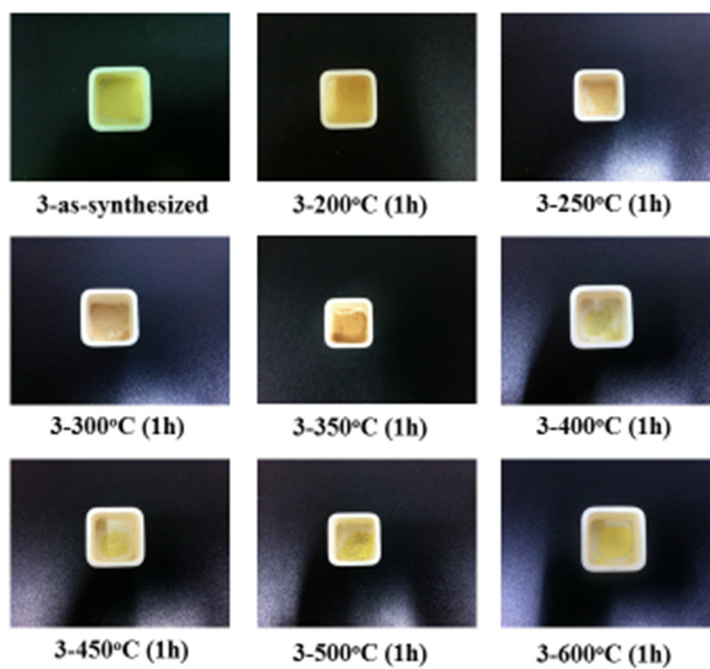


Figure S7. Photos of **3** after calcination at various temperatures for one hour.

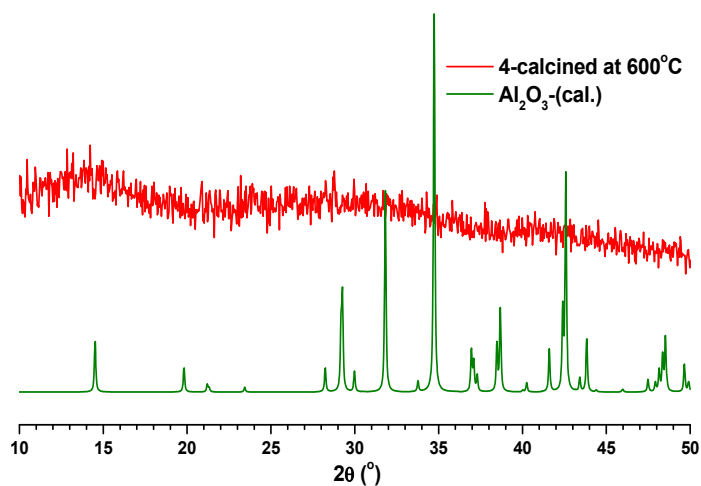


Figure S8. Comparison of PXRD pattern of **2** calcined at 600 °C with calculated PXRD pattern of Al_2O_3 .

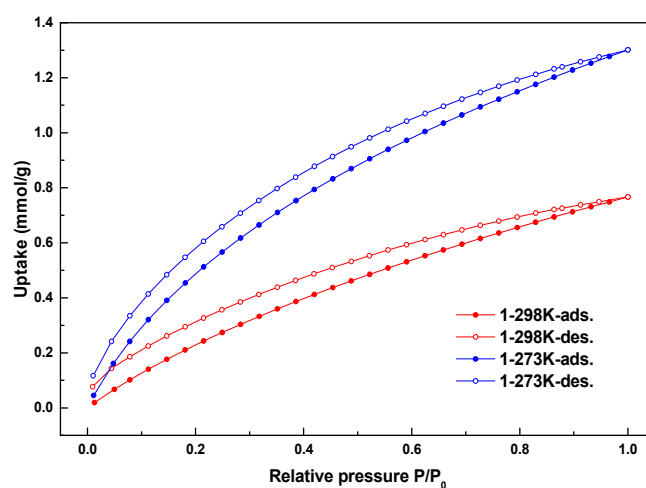


Figure S9. The CO_2 gas sorption isotherms for **1** at 273 K and 298 K.

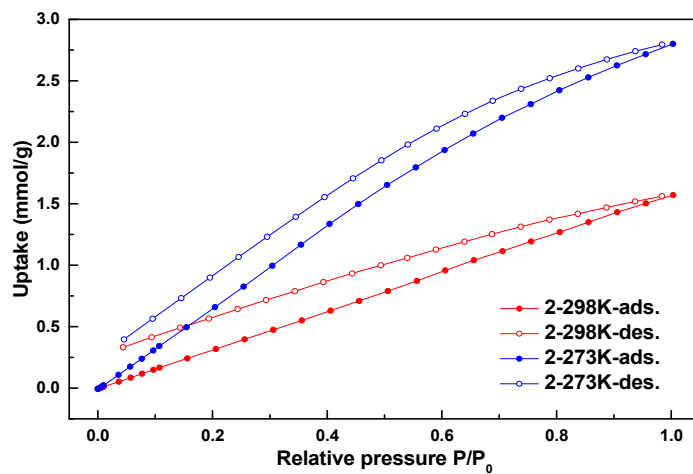


Figure S10. The CO_2 gas sorption isotherms for **2** at 273 K and 298 K.

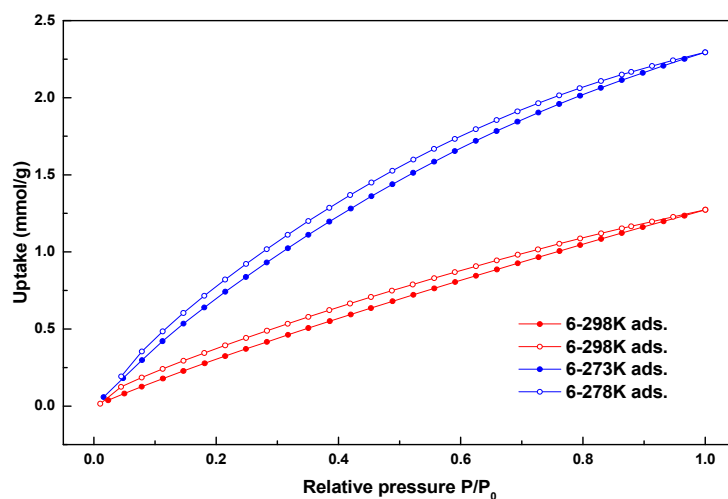


Figure S11. The CO₂ gas sorption isotherms for **3** at 273 K and 298 K.

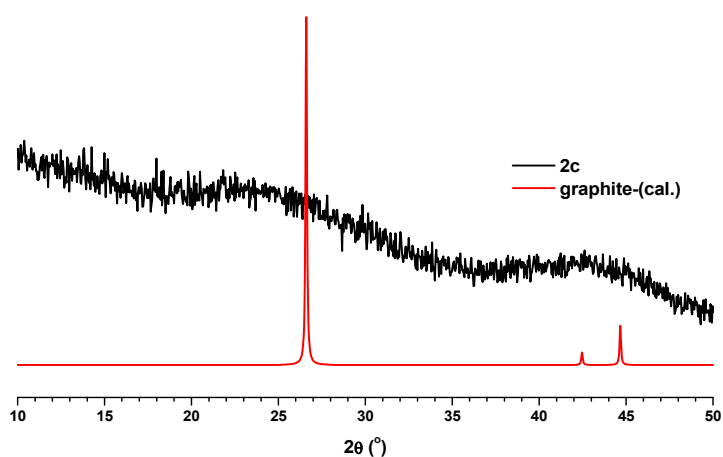


Figure S12. Comparison of PXRD pattern of **2c** with calculated PXRD pattern of Graphite.

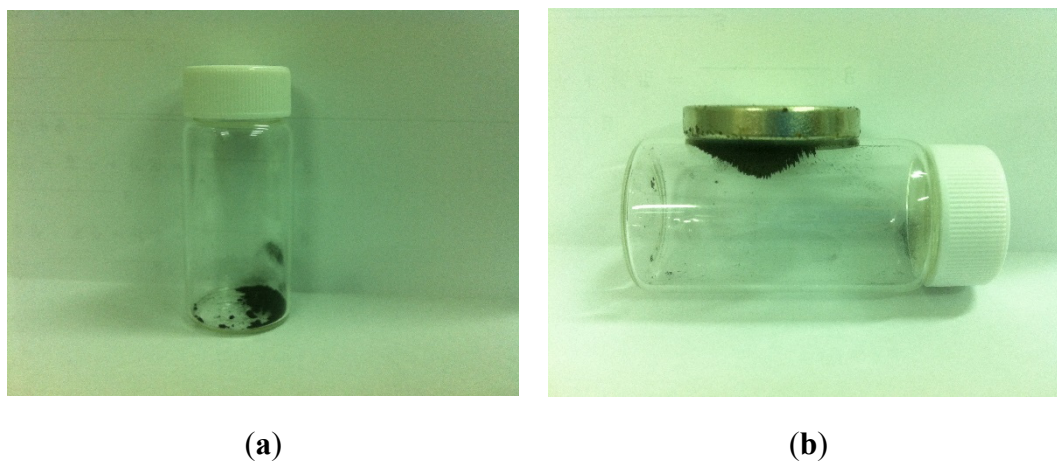
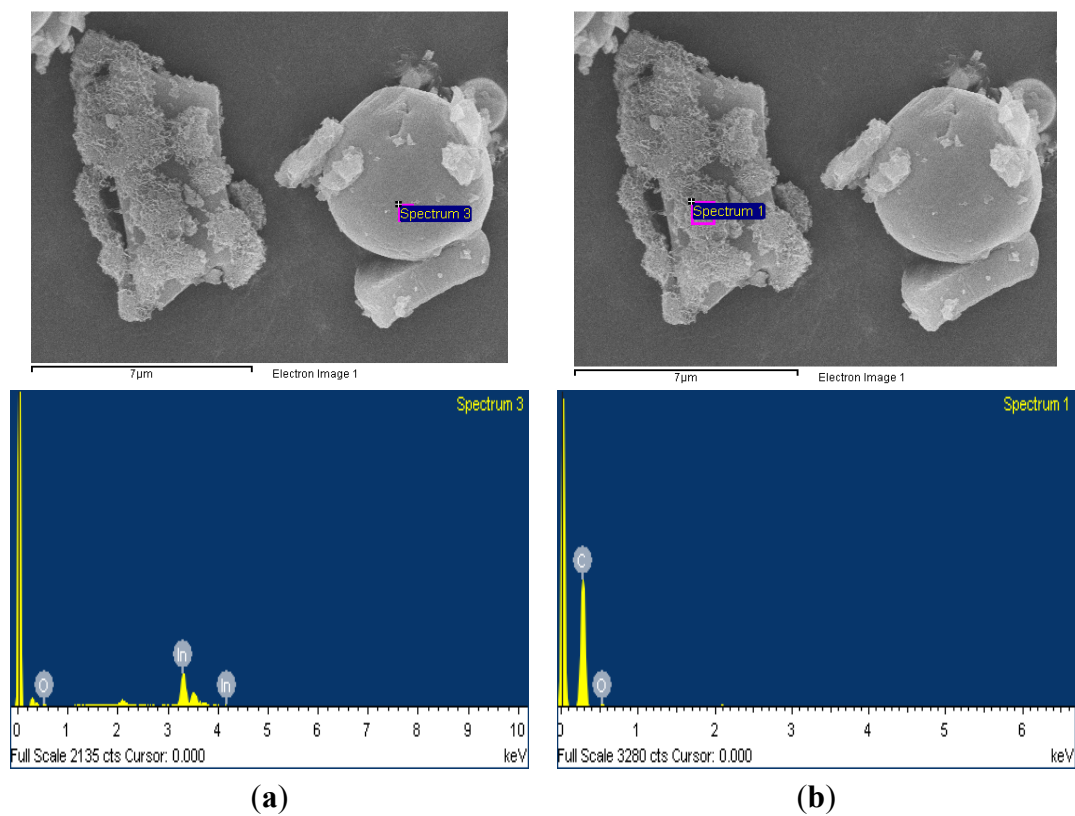


Figure S13. Photos of **1c** without magnetic field (a) and with magnetic field (b).



| (a) | | | (b) | | |
|---------|------------|------------|---------|------------|------------|
| Element | Weight (%) | Atomic (%) | Element | Weight (%) | Atomic (%) |
| C | 93.22 | 94.83 | C | 0.00 | 0.00 |
| O | 6.78 | 5.17 | O | 4.36 | 24.67 |
| In | 0.00 | 0.00 | In | 95.64 | 75.33 |

Figure S14. The EDS analysis results for **3c** at two different places of SEM images (a) and (b).