

Article

Immunohistochemical and Histopathological Features of Persistent Gingival Enlargement in Relation to Metal Allergic Sensitisation during Orthodontic Treatment

Martina Zigante ^{1,2,*}, Stjepan Spalj ^{1,2,3}, Jelena Prpic ^{2,4}, Andrej Pavlic ^{1,5}, Visnja Katic ^{1,2} and Koviljka Matusan Ilijas ^{2,6}

¹ Department of Orthodontics, Faculty of Dental Medicine, University of Rijeka, 51000 Rijeka, Croatia

² Clinical Hospital Center Rijeka, 51000 Rijeka, Croatia

³ Department of Dental Medicine, Faculty of Dental Medicine and Health, J. J. Strossmayer University of Osijek, 31000 Osijek, Croatia

⁴ Department of Periodontology, Faculty of Dental Medicine, University of Rijeka, 51000 Rijeka, Croatia

⁵ Department of Pediatric Dentistry, Faculty of Dental Medicine, University of Rijeka, 51000 Rijeka, Croatia

⁶ Department of General Pathology and Pathological Anatomy, Faculty of Medicine, University of Rijeka, 51000 Rijeka, Croatia

* Correspondence: martina.zigante@fdmri.uniri.hr

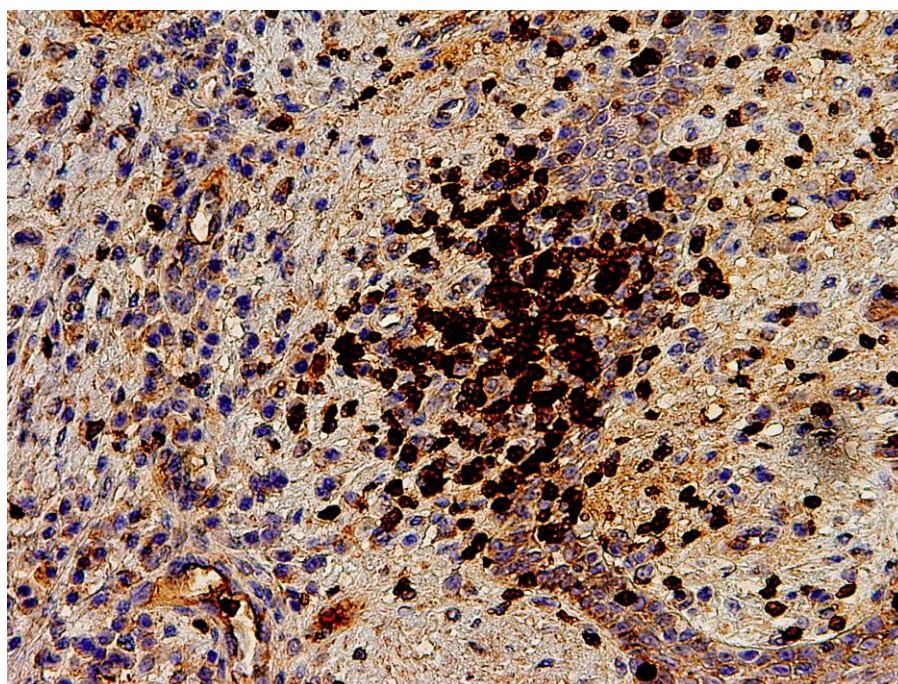


Figure S1. Example sample of immuno-staining for T-lymphocytes in non-sensitised patient (Expression of CD3 molecule (T-lymphocytes) is in brown).

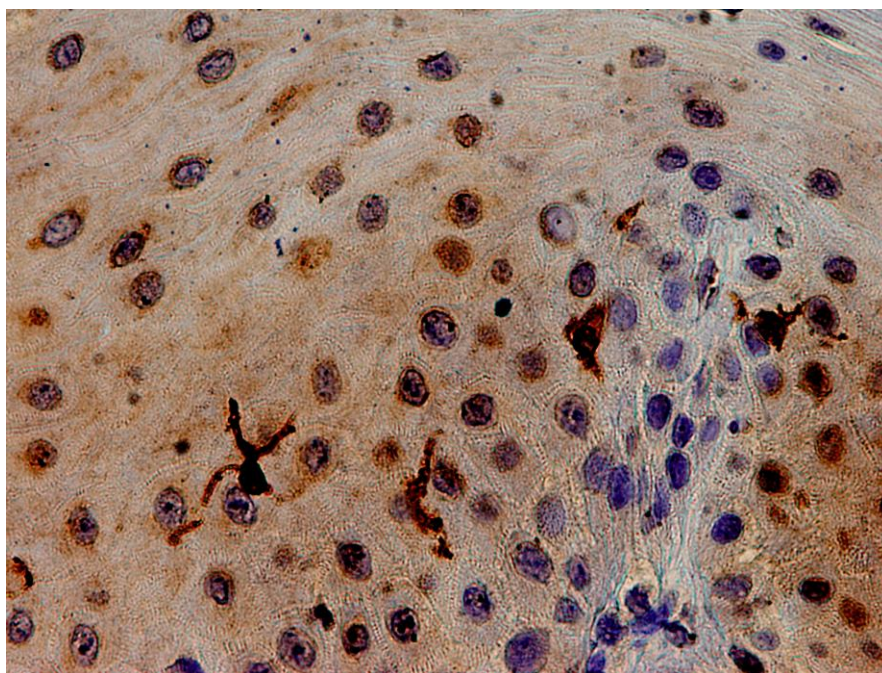


Figure S2. Example sample of immuno-staining for Langerhans cells in sensitised patient (Expression of CDa1 molecule (Langerhans cells) is in brown.

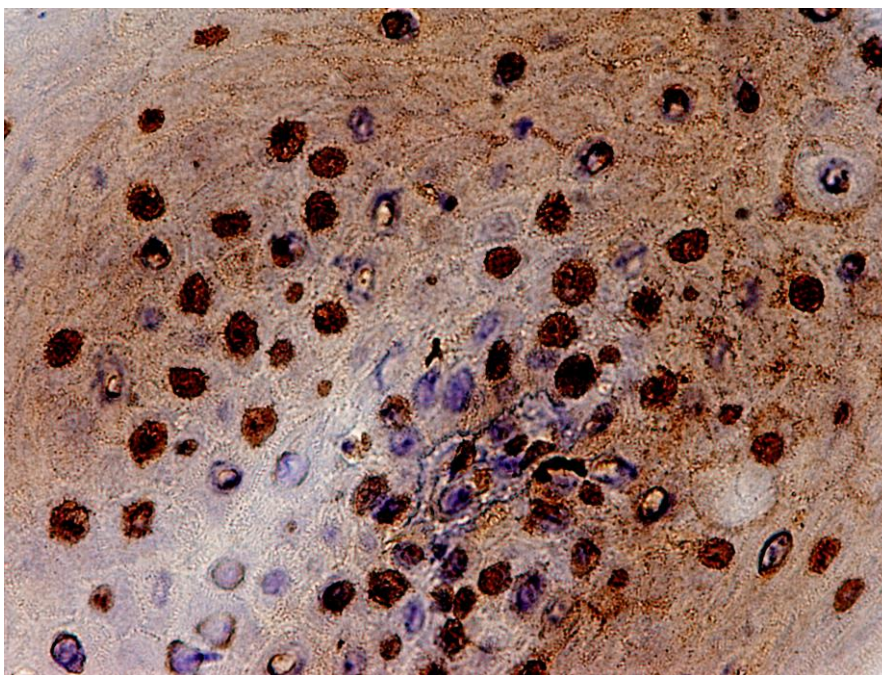


Figure S3. Example sample of immuno-staining for T-cytotoxic lymphocytes in sensitised and non-sensitised patient (Expression of CD8 molecule (T-cytotoxic lymphocytes) is in brown.

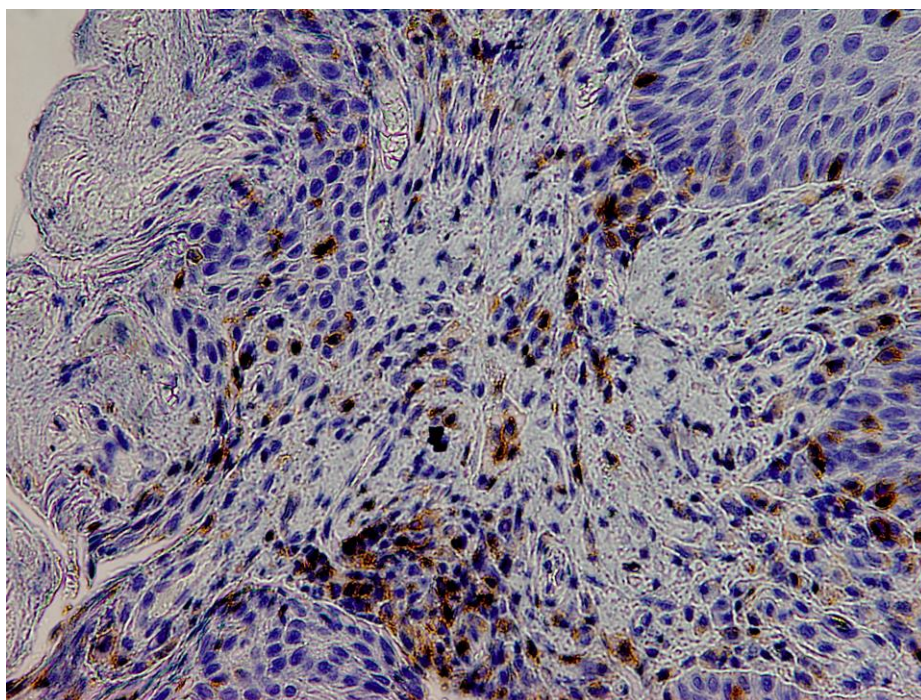


Figure S4. Example sample of immuno-staining for B-lymphocytes in non-sensitised patient (Expression of CD20 molecule (B-lymphocytes) is in brown).

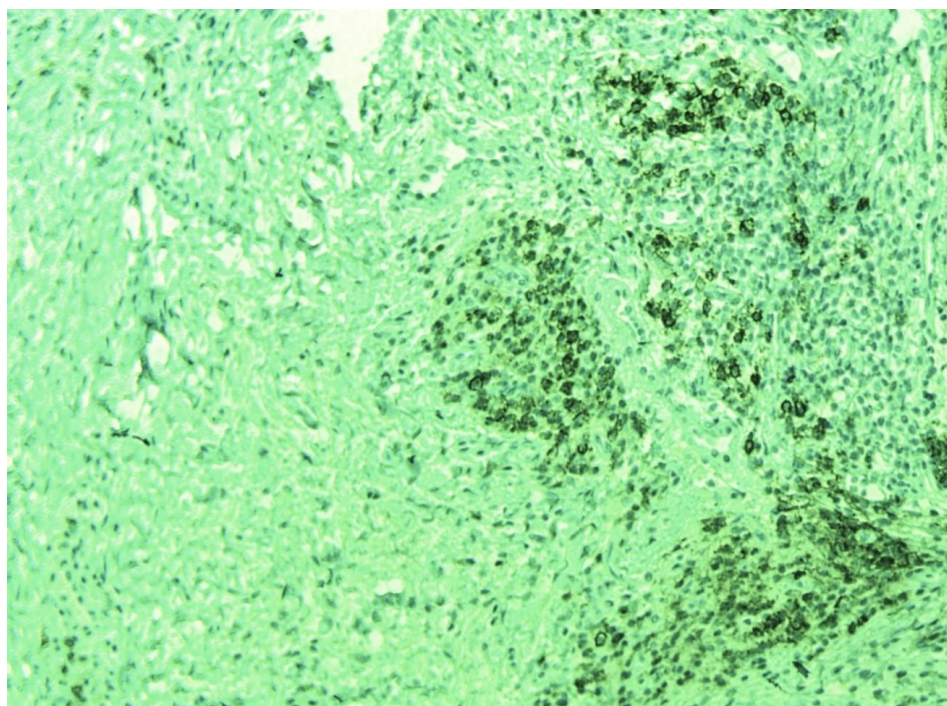


Figure S5. Example sample of immuno-staining for plasma cells in non-sensitised patient (Expression of CD138 molecule (plasma cells) is in brown).