

Binary Binder for Cf/C-SiC Composites with Enhanced Mechanical Property

Yun Liu ¹, Long Ma ¹, Runa Dong ¹, Kexin Cui ¹, Yongzhao Hou ^{1,2,*}, Wen Yang ³, Yeqing Liu ⁴, Cheng Zhong ¹, Guangwu Wen ^{1,*} and Lijuan Zhang ¹

¹ School of Materials Science and Engineering, Shandong University of Technology, Zibo 255000, China; ly17864301063@163.com (Y.L.); ml18340071781@163.com (L.M.); drn19121102039@163.com (R.D.); ckx9221@163.com (K.C.); aa1435884413@163.com (C.Z.); zhanglj@sdut.edu.cn (L.Z.)

² Shandong Guiyuan Advanced Ceramics Co., Ltd., Zibo 255086, China

³ School of Transportation and Vehicle Engineering, Shandong University of Technology, Zibo 255000, China; yangwen004@sdut.edu.cn

⁴ Shandong Si-Nano Materials Technology Co., Ltd., Zibo 255400, China; liuyeqingyao@outlook.com

* Correspondence: houyz1990@sdut.edu.cn (Y.H.); wengw@sdut.edu.cn (G.W.); Tel.: +86-188-1630-7735 (Y.H.)

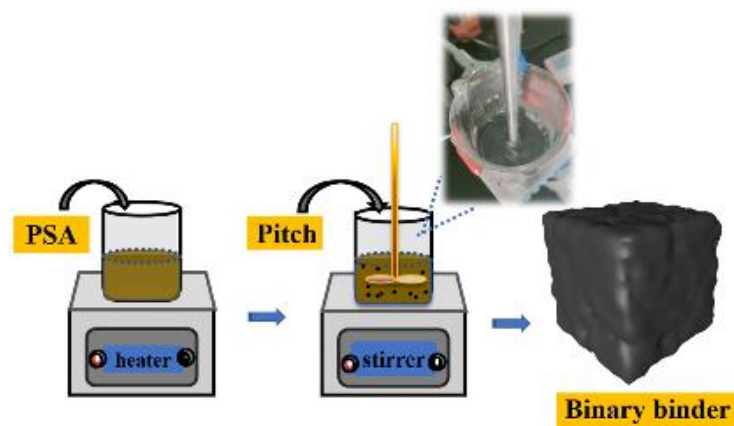


Figure S1. The schematic of the fabrication process of the composite binder.

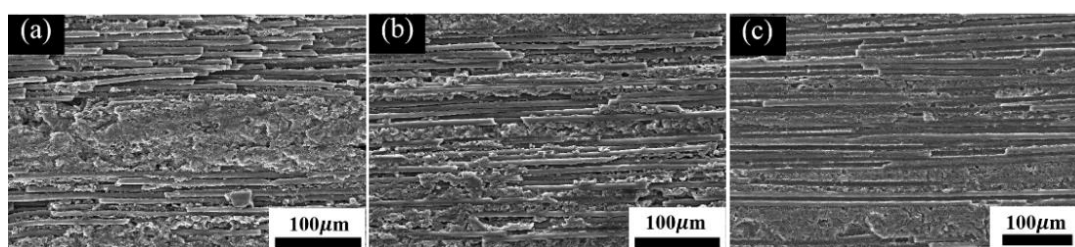


Figure S2. The microstructures of the polishing surface of the: (a) Cf/C-SiC-50% composite; (b) Cf/C-SiC-60% composite; (c) Cf/C-SiC-70% composite.

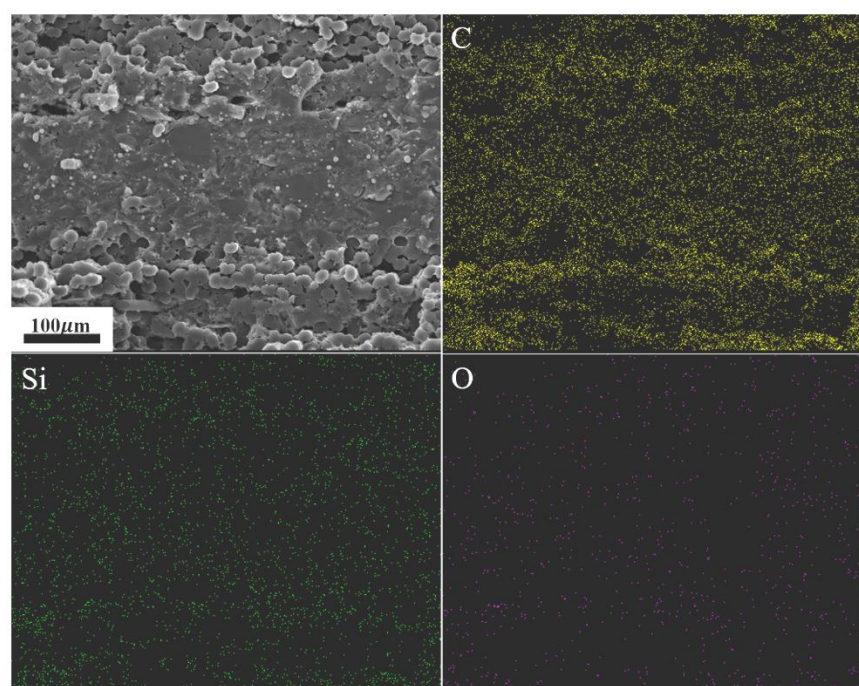


Figure S3. EDS analysis of Cf/C-SiC-60% composites.

Table S1. Map results of Cf/C-SiC-60% composite.

Spectrum 1			Spectrum 2		
element	Wt(%)	At(%)	element	Wt(%)	At(%)
Si	5.38	2.39	Si	5.39	2.39
C	92.13	95.67	C	92.11	95.66
O	2.5	1.95	O	2.50	1.95