

Supplementary Materials: NEW CONCEPT FOR THE FACILE FABRICATION OF CORE-SHELL $\text{CuO@CuFe}_2\text{O}_4$ PHOTOCATHODES FOR PEC APPLICATION

Linh Trinh ^{1,*}, Krzysztof Bienkowski ¹, Piotr Wróbel ², Marcin Pisarek ³, Aleksandra Parzuch ¹, Nabila Nawaz ¹, and Renata Solarska ^{1,*}

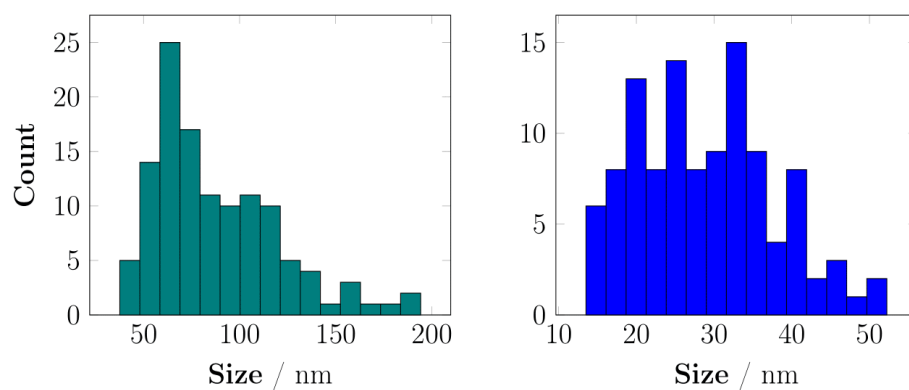


Figure S1. Size distribution of CuFe_2O_4 obtained from SEM imaging

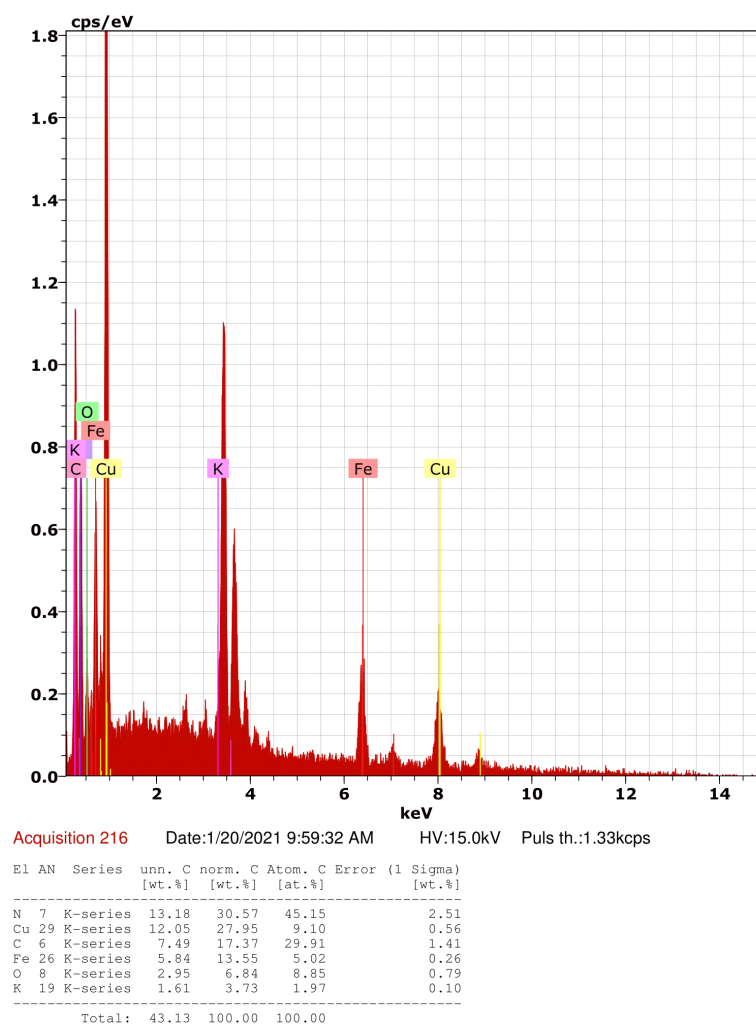
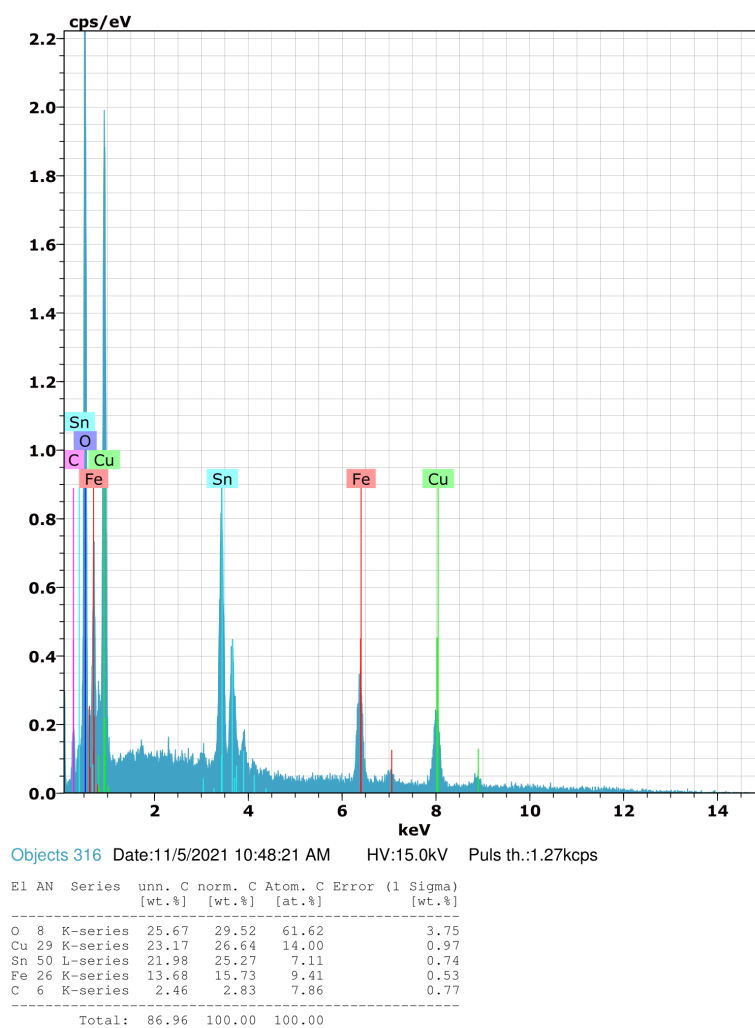


Figure S2. EDS analysis of CuFe PBAs

Figure S3. EDS analysis of CuO@CuFe₂O₄

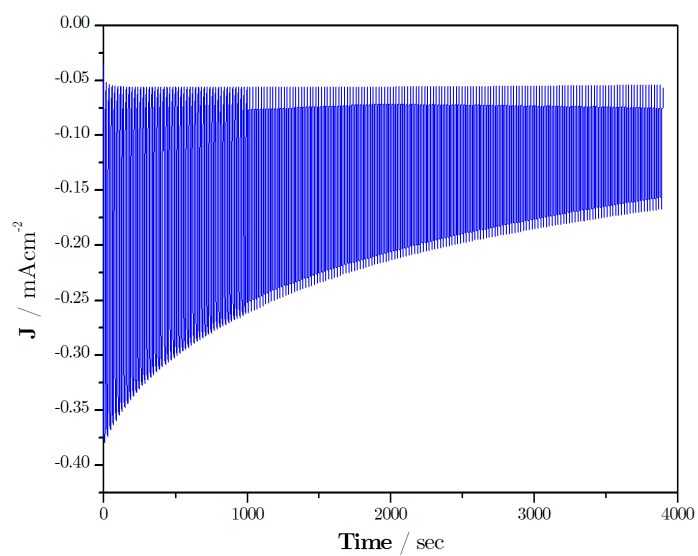


Figure S4. Extended i-T curve of CuO@CuFe₂O₄ in NaOH 0.1 M (pH 13) under chop light irradiation

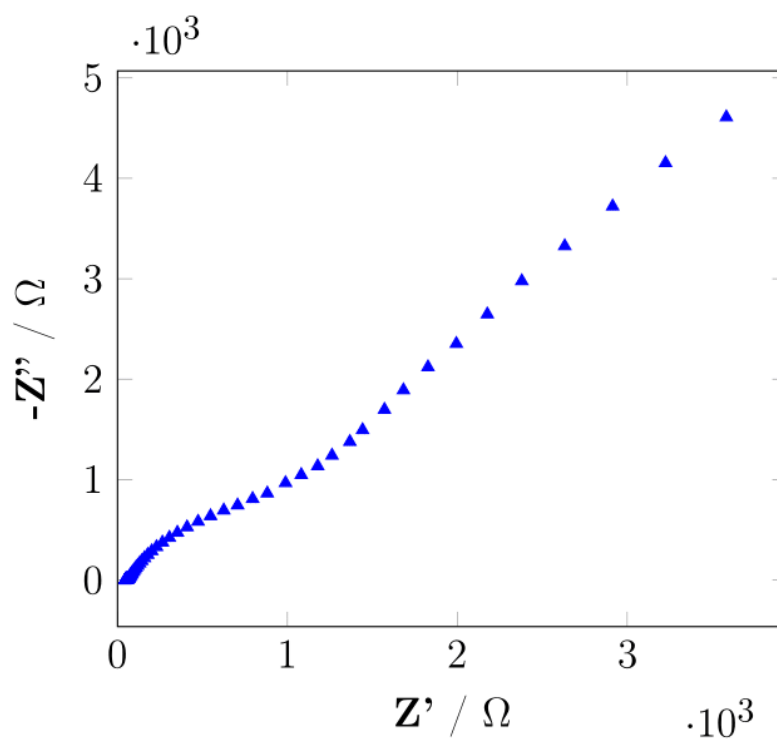


Figure S5. Nyquist measurement of CuO@CuFe₂O₄ in NaOH 0.1 M (pH 13) under 1 sun light irradiation

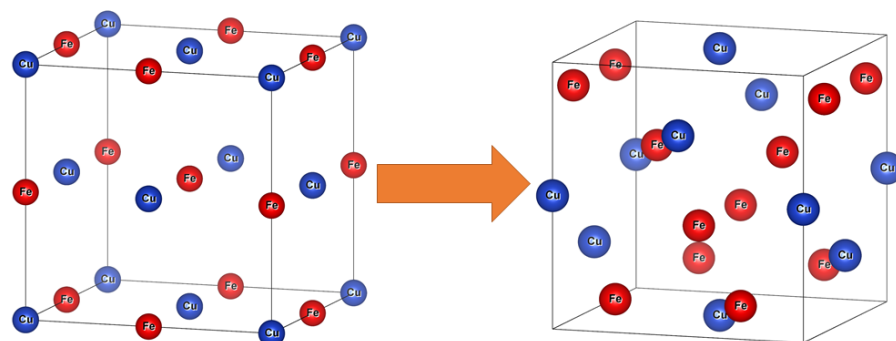


Figure S6. Crystal structure of CuFe PBAs before and after thermal conversion

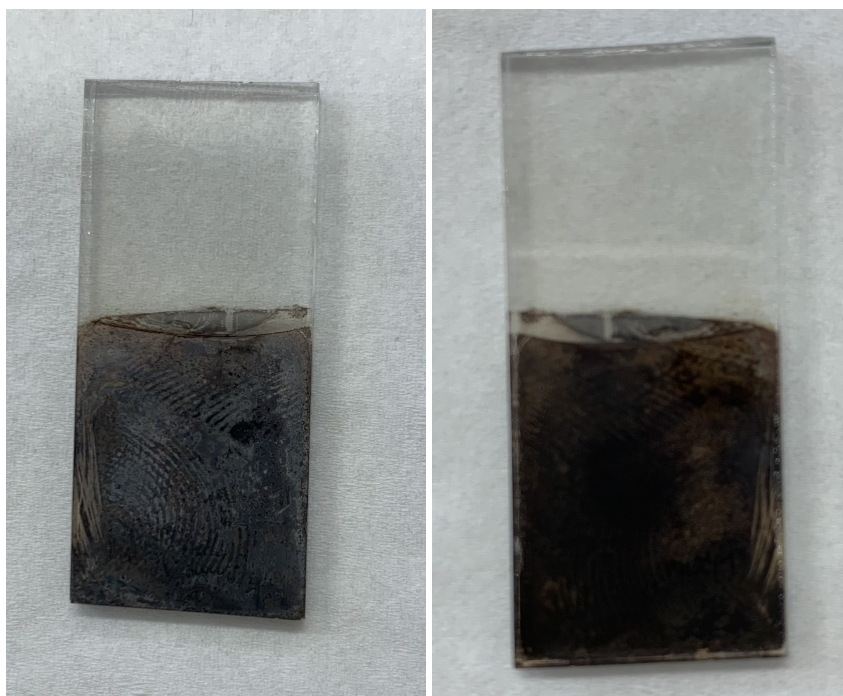


Figure S7. Images of the front and back side of prepared CuOCuFe₂O₄ sample