

Supplementary Material

The Effect of AlI_3 Nano-additive on the Thermal Behavior of PMMA Subjected to Thermoanalytical Py-GC-MS Technique

Muhammad Adnan ¹, Taj Ur Rahman ^{1,*}, Ali Bahadur ^{2,*}, Muhammad Aurang Zeb ^{1,*}, Wajiha Liaqat ¹, Takashiro Akitsu ³, Shams H. Abdel-Hafez ⁴ and Wael A. El-Sayed ⁵

¹ Department of Chemistry, Mohi-Ud-Din Islamic University, Nerian Sharif, Azad Jammu & Kashmir.

² Department of Transdisciplinary Studies, Graduate School of Convergence Science and Technology, Seoul National University, Seoul, 08826, South Korea.

³ Department of Chemistry, Faculty of Science Division II, Tokyo University of Science, Tokyo, Japan

⁴ Department of Chemistry, College of Science, Taif University. P.O.Box 11099, Taif 21944. Saudi Arabia

⁵ Department of Chemistry, College of Science, Qassim University, Buraida, Saudi Arabia

* Correspondence: alibahadur138@snu.ac.kr (A. B), taj_urrehman81@yahoo.co.uk (T. U. R), muham-mad_aurangzeb@hotmail.com (M.A.Z).

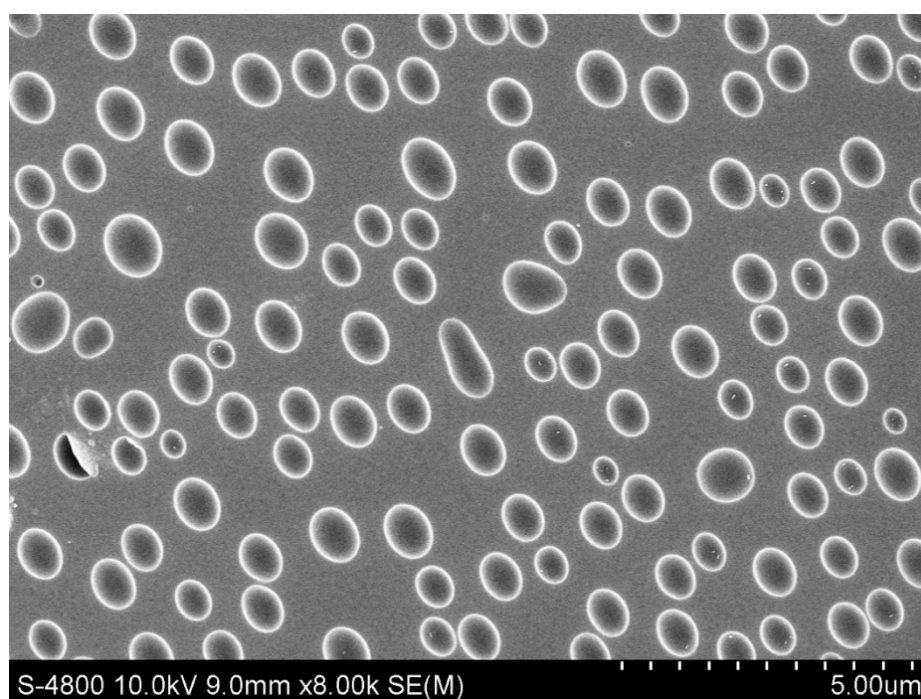


Figure S1. SEM images of M5 composite.

Table S1. Kinetic data of composite M1-M5.

Sample	Activation E (kJ/mol)	Order
M	19.71	1
M1	9.52	2
M2	8.26	2
M3	5.82	2
M4	6.34	2
M5	5.41	2
AlI_3	4.36	1

Table S2. The horizontal burning rate for PMMA composite.

Composite	Burning time (s)	Length of strip (mm)	Burning rate (mm/s)
M	15	100	6.66
M1	51	100	1.96
M2	53	100	1.88
M3	56	100	1.78
M4	61	100	1.63
M5	67	100	1.49