

Supporting information

Effect of boron and water-to-cement ratio on the performances of laboratory prepared Belite-Ye'elimite-Ferrite (BYF) cements.

Raquel Pérez-Bravo¹, Alejandro Morales-Cantero¹, Margherita Bruscolini², Miguel A.G. Aranda¹, Isabel Santacruz¹, Angeles G. De la Torre^{1,a}

This supporting information contains eleven figures: PSD of st-BYF and B-BYF (Figure S1), LXRPD raw patterns of hydrated pastes (Figures S2 to S8) and Rietveld plots of selected pastes hydrated at 7, 28 and 120 d (Figures S9 to S11).

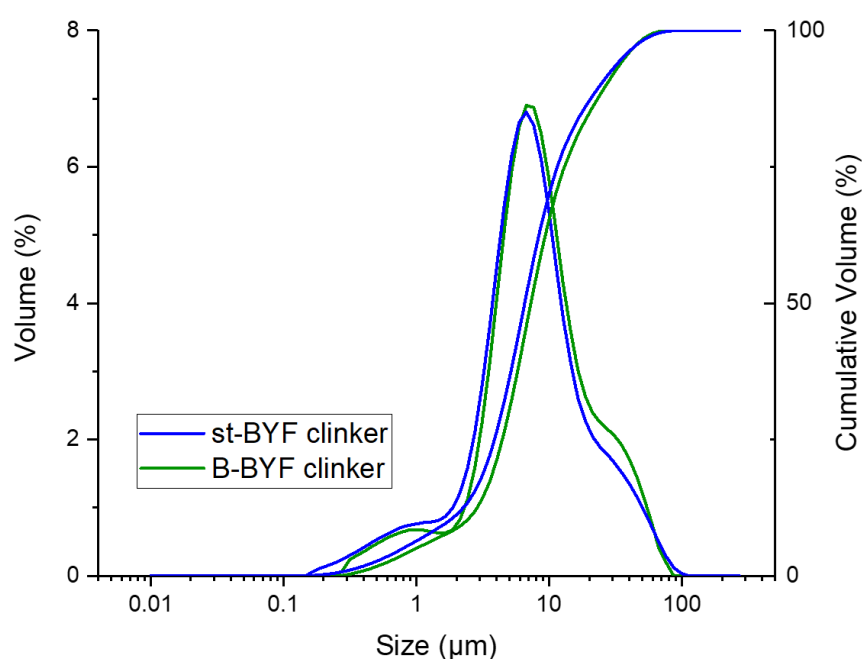


Figure S1. Particle size distribution of BYF clinkers.

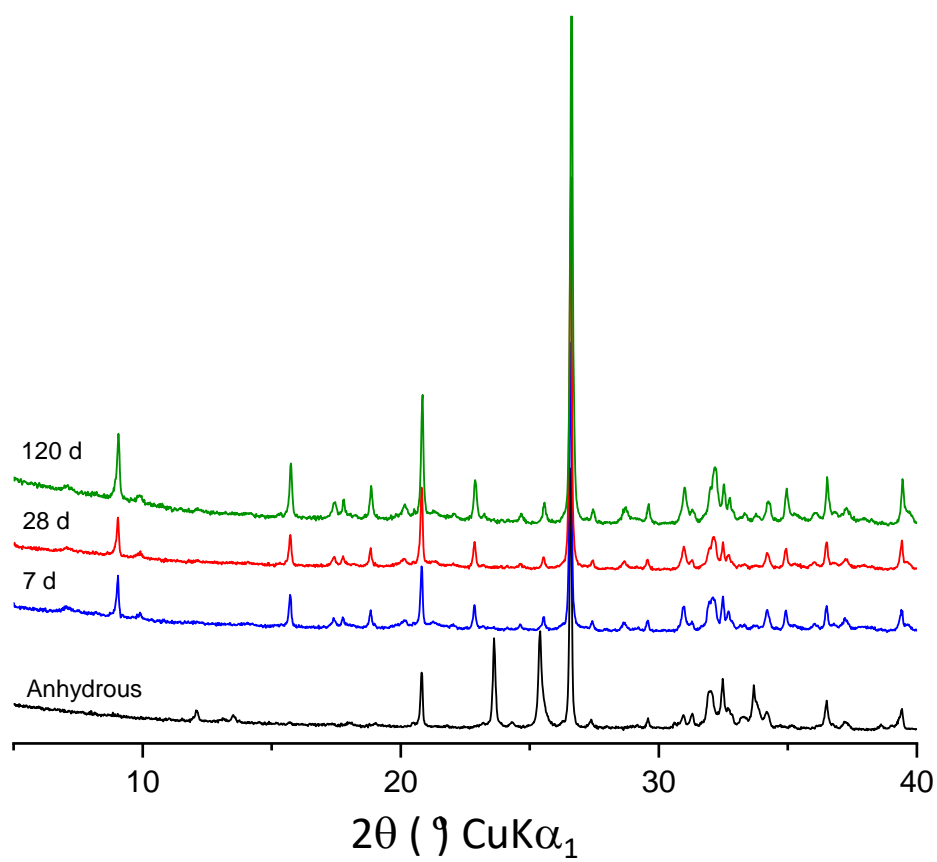


Figure S2. Raw LXRPD data of st-BYF_wc040_03SP.

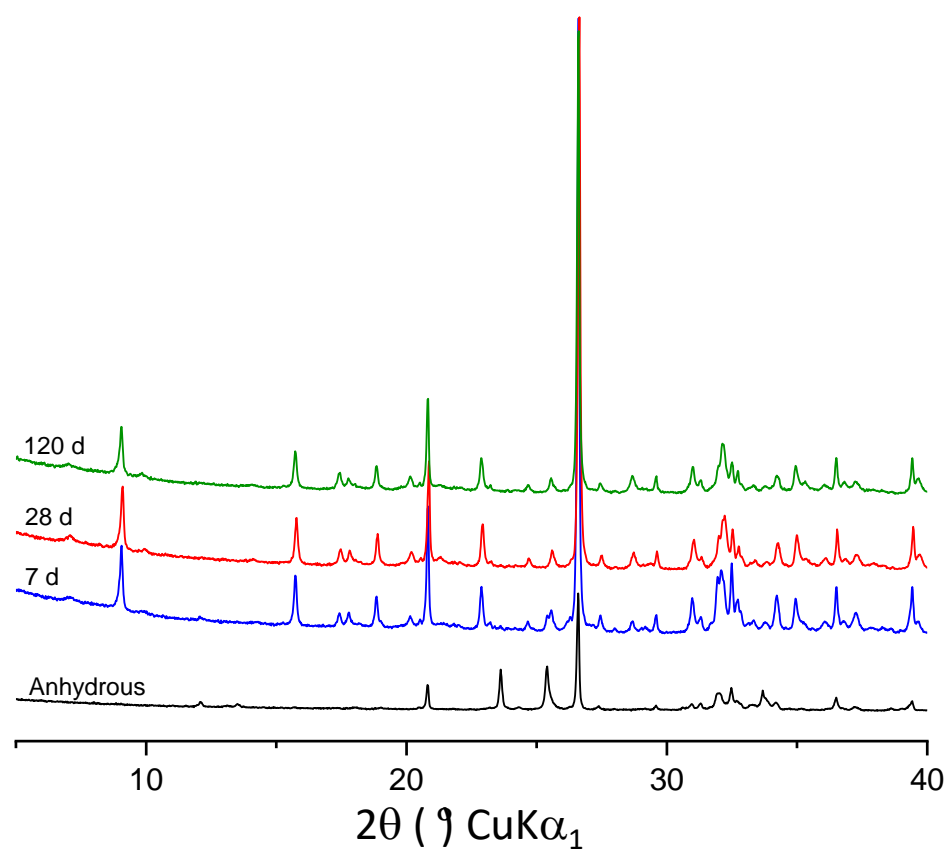


Figure S3. Raw LXRPD data of st-BYF_wc040_01SP_0.25B₂O₃.

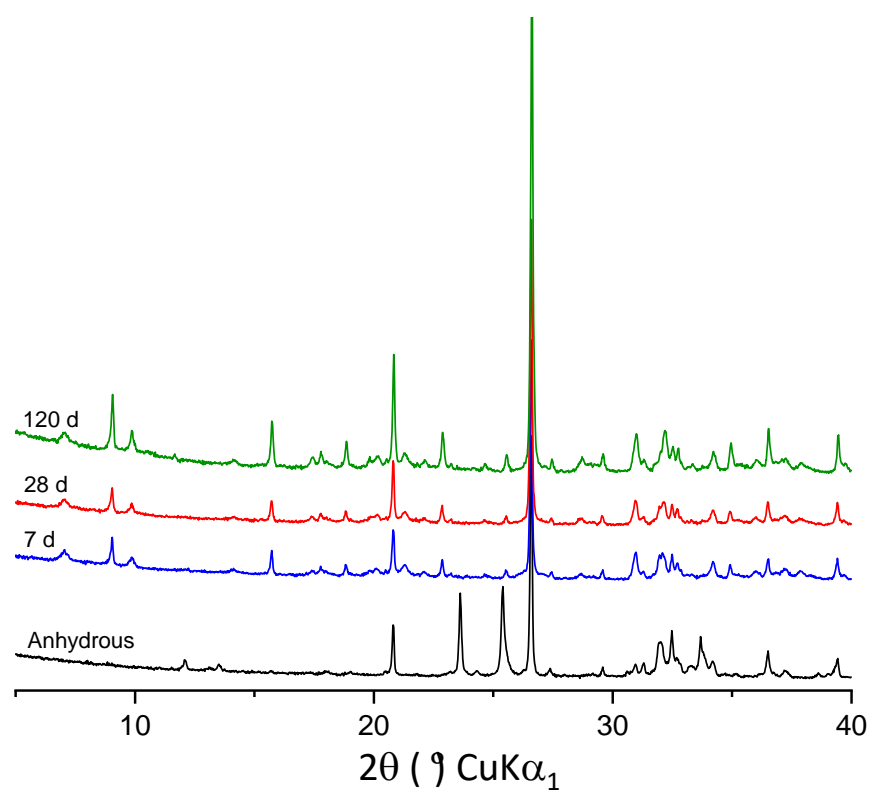


Figure S4. Raw LXRPD data of st-BYF_wc050.

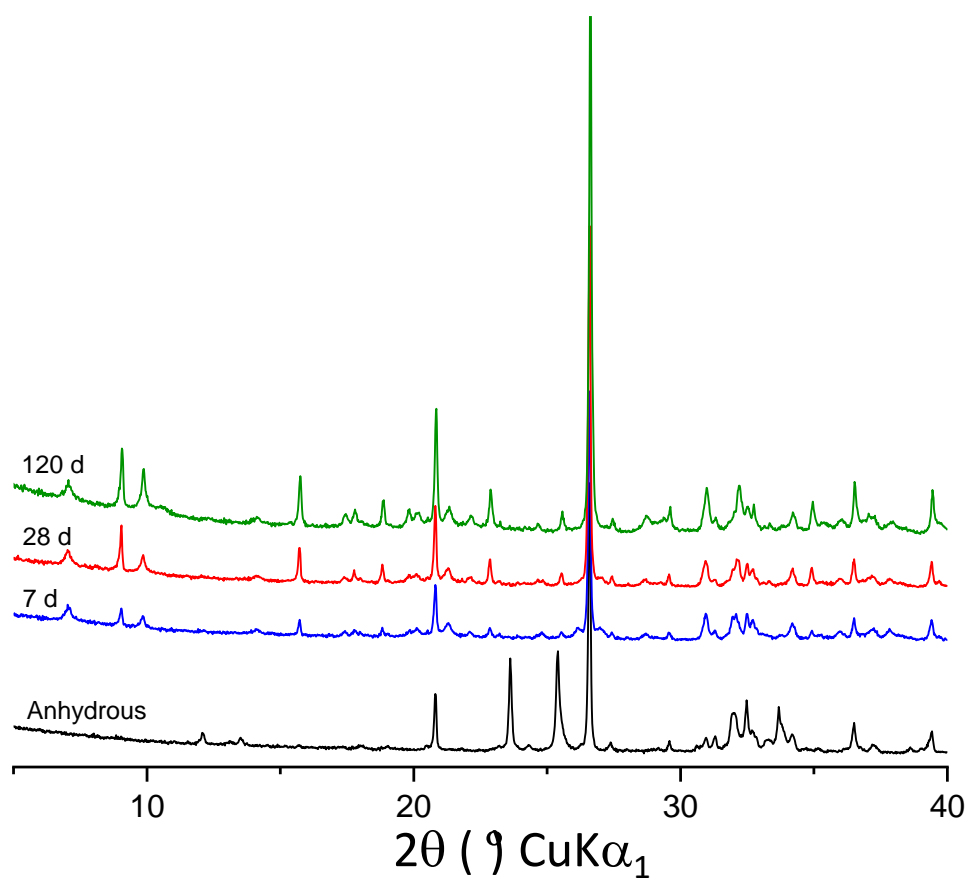


Figure S5. Raw LXRPD data of st-BYF_wc060.

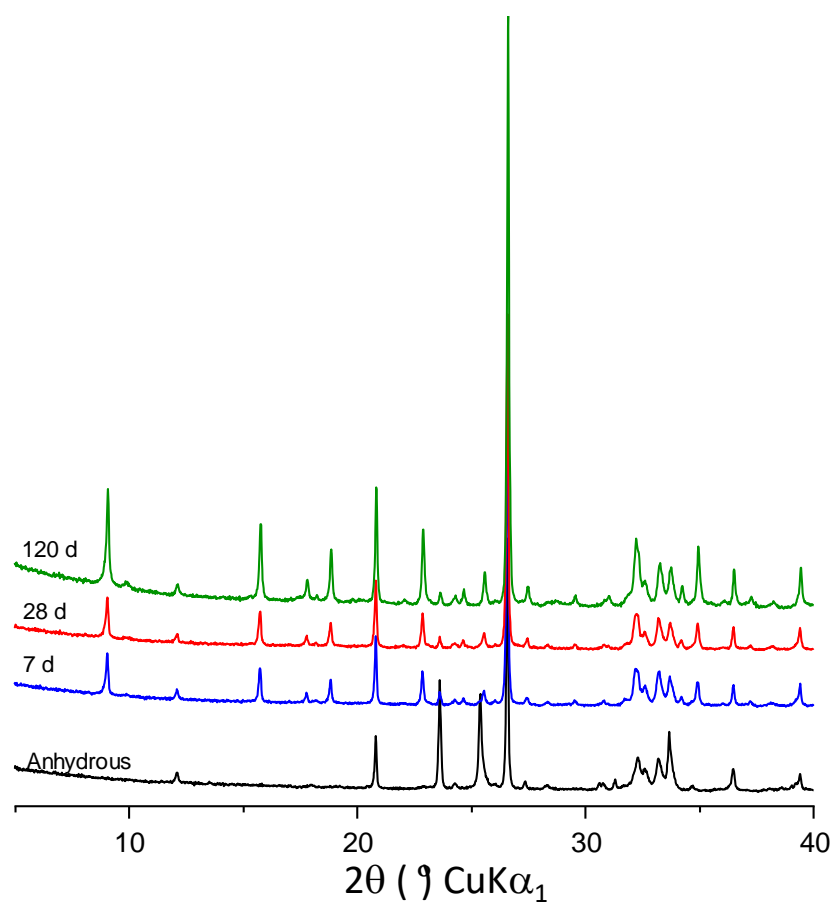


Figure S6. Raw LXRPD data of B-BYF_wc040_04SP.

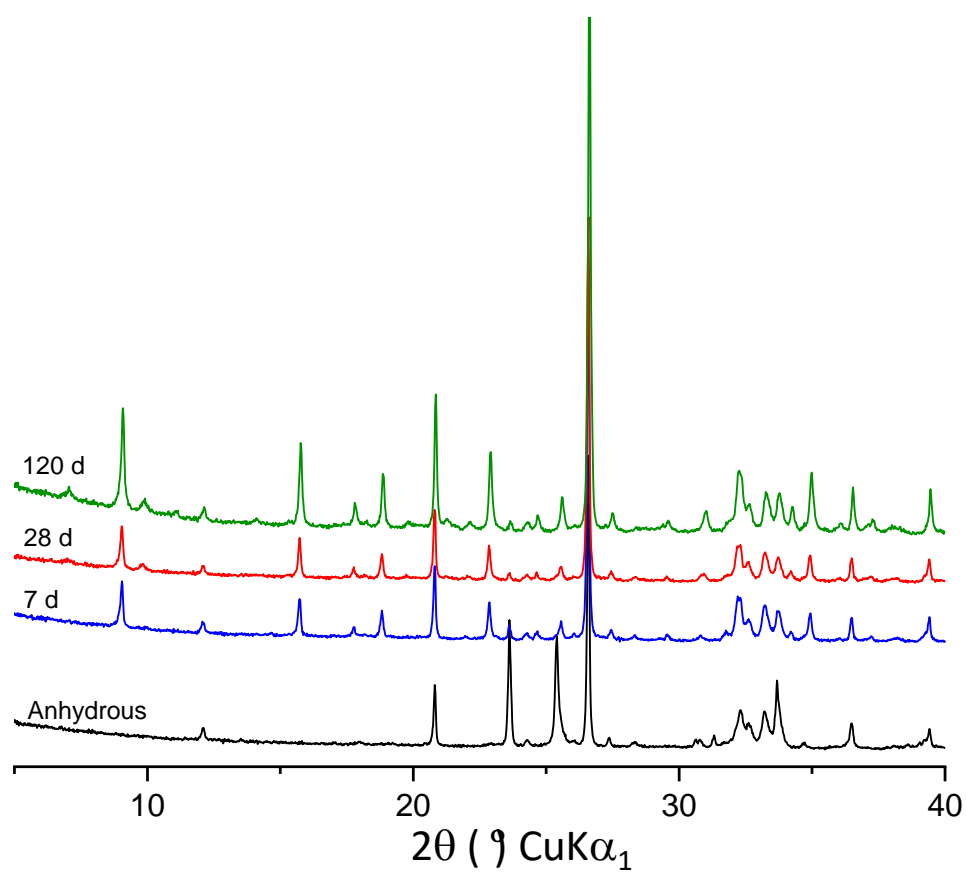


Figure S7. Raw LXRPD data of B-BYF_wc050_03SP.

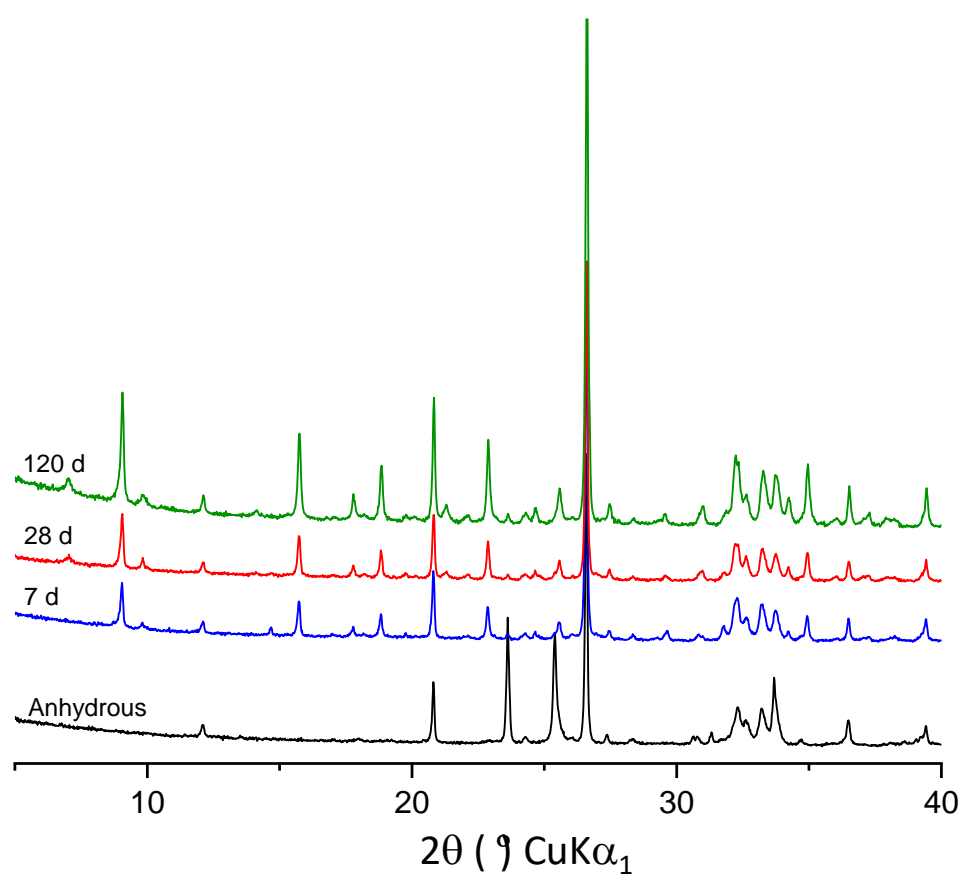


Figure S8. Raw LXRPD data of B-BYF_wc060.

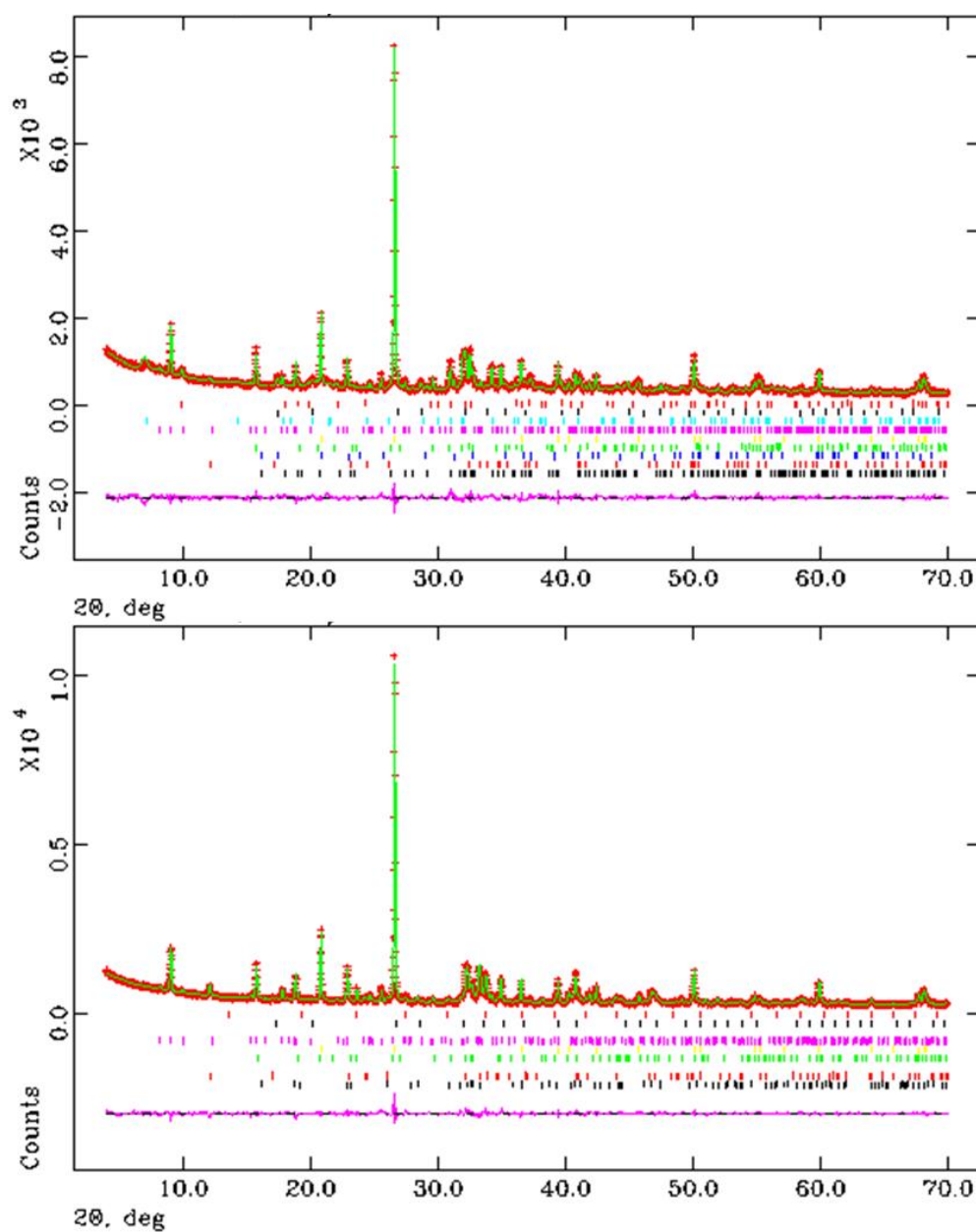


Figure S9. Rietveld plots of st-BYF_wc040_03SP (top) and B-BYF_wc040_04SP (bottom) at 7 days.

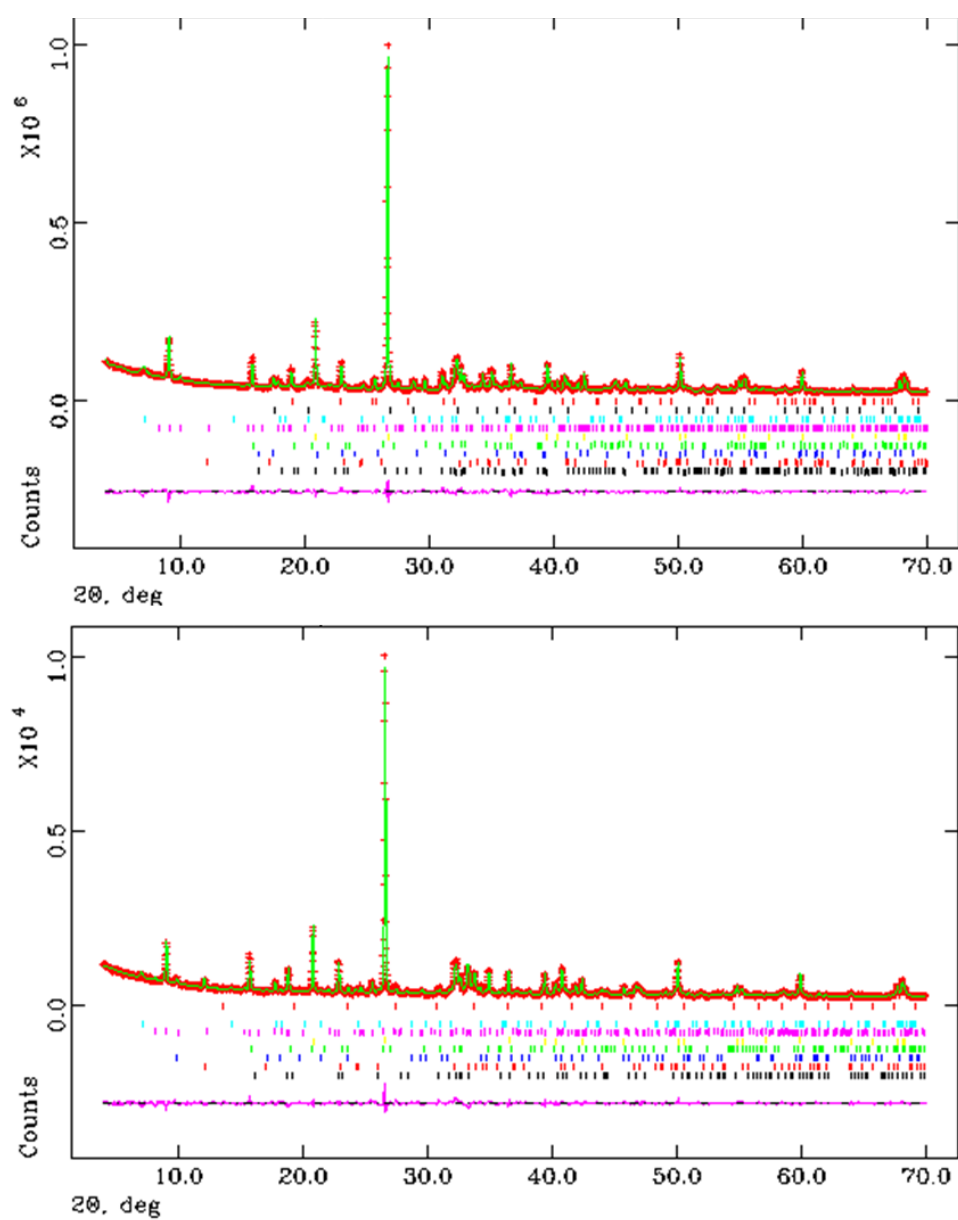


Figure S10. Rietveld plots of st-BYF_wc040_01SP_0.25B₂O₃ (top) and B-BYF_wc050_03SP (bottom) at 28 days.

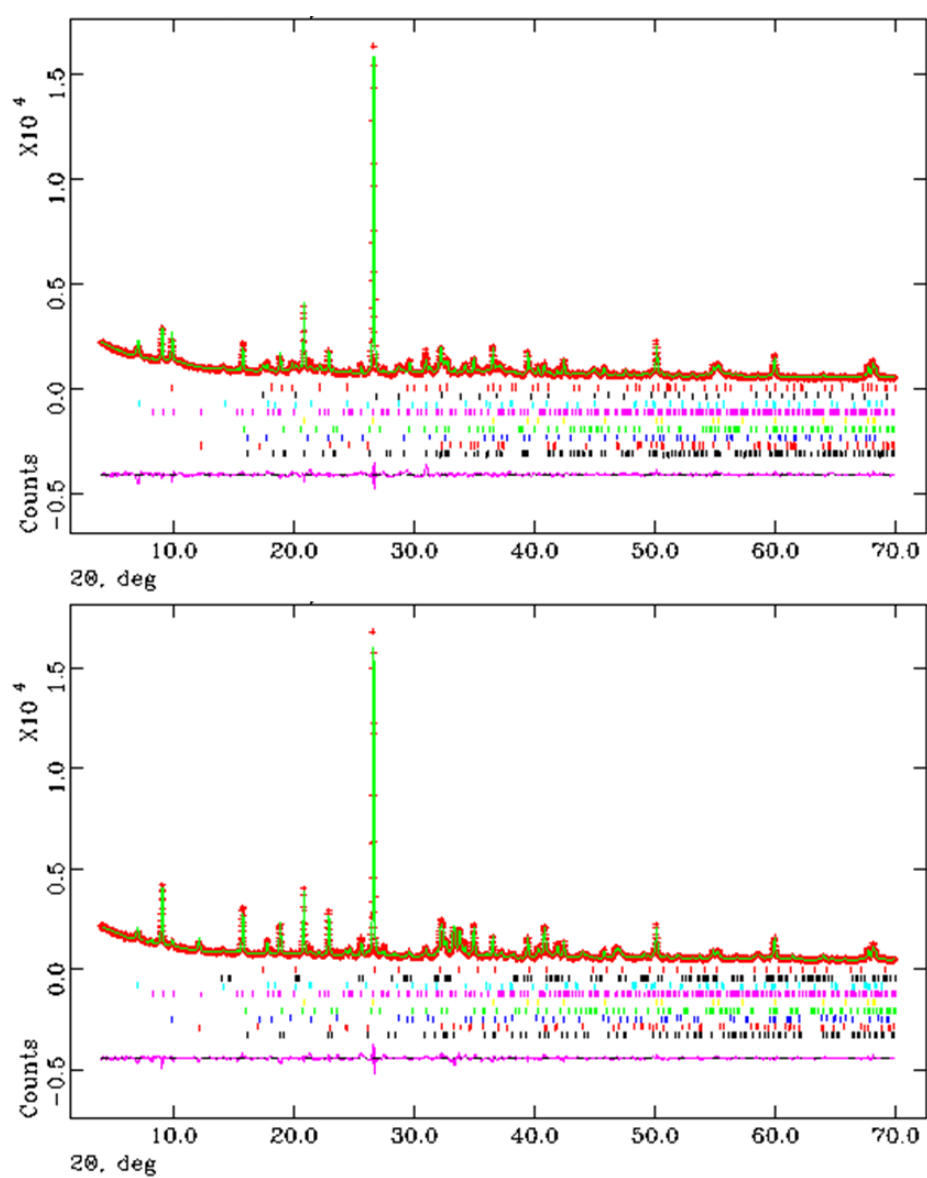


Figure S11. Rietveld plots of st-BYF_wc060 (top) and B-BYF_wc060 (bottom) at 120 days.